



**ITALIAN NATIONAL STRATEGY FOR INNER AREAS (SNAI):  
A TOOL FOR RURAL DEVELOPMENT**  
With the Case history of Inner Area “Basso Ferrarese”

**Francesco Silvestri**

National Committee supporting Inner Areas Strategy

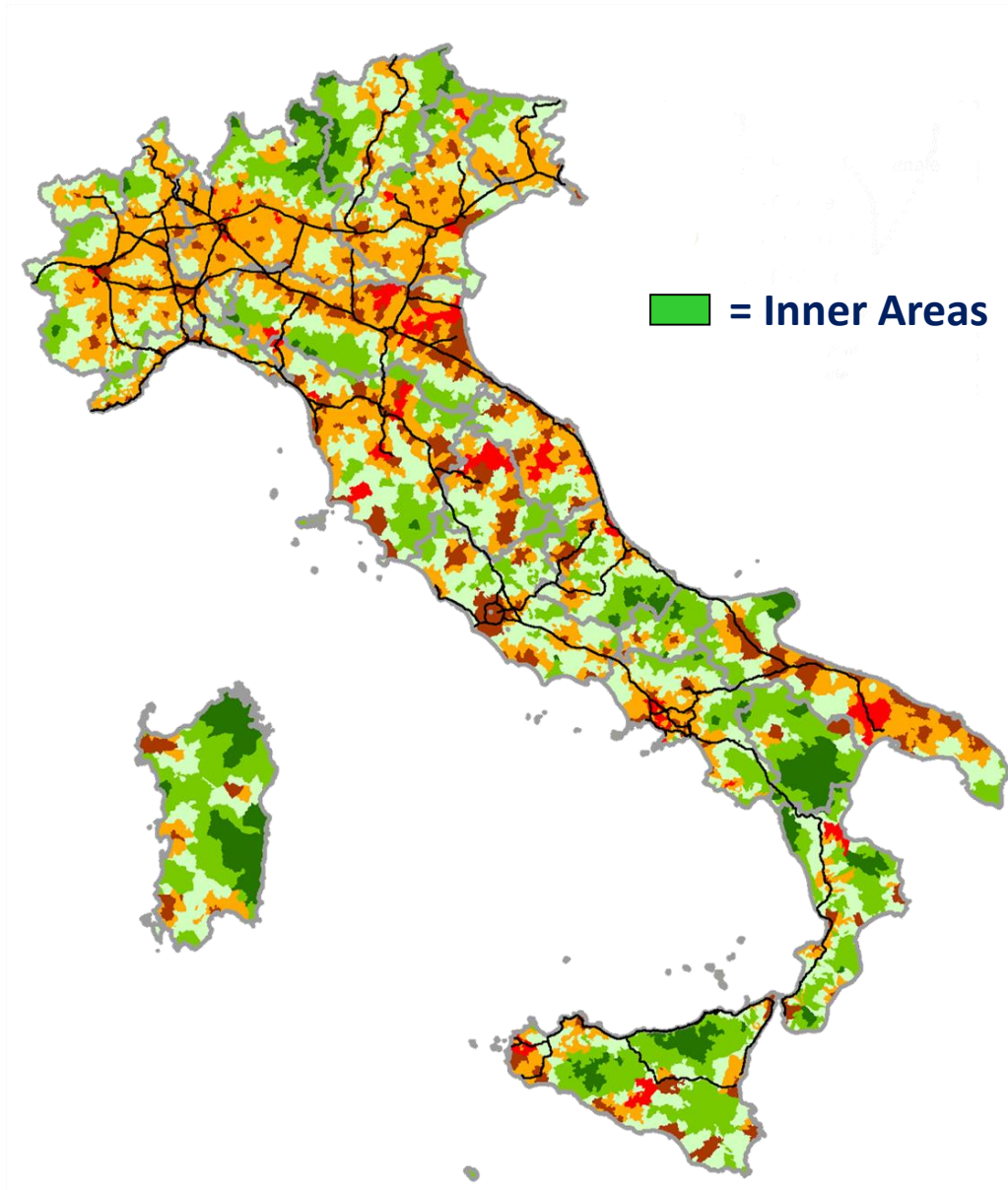
# Key problems for rural space in Italy (the Inner Areas Strategy premises)

**Physical:** travel distance from  
'Service Centers' municipalities

**Digital divide:** % of population  
connected to broadband > 20  
mbps

**Demographic:** loss/lower increase  
and aging of population

**Economic:** loss of cultivated soil  
(Census 1982-2010)



# Inner Areas National Strategy (SNAI): method

The Technical Committee along with Regions analyze Inner Areas through a desk and a field analysis process



Quantitative data and qualitative information are used to identify and select weakest inner areas



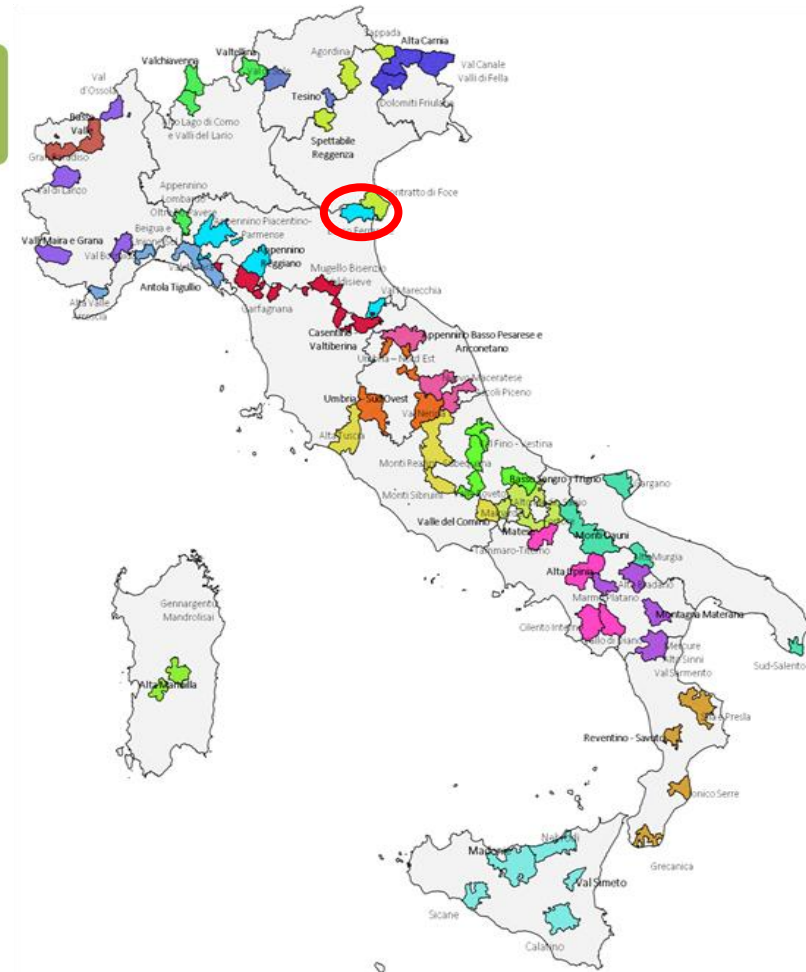
Each selected area define its local development strategy



A local development strategy is an integrated path aimed to development and growth



It is based on local essential services improvements and local development projects support



# Rural Innovation in the realm of SNAI

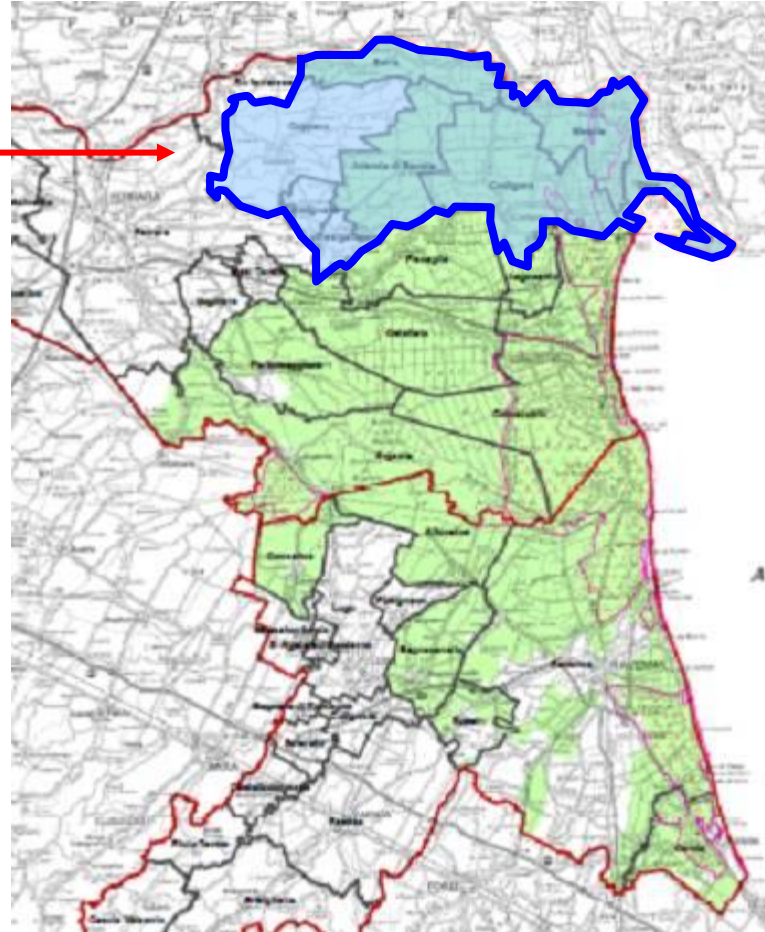
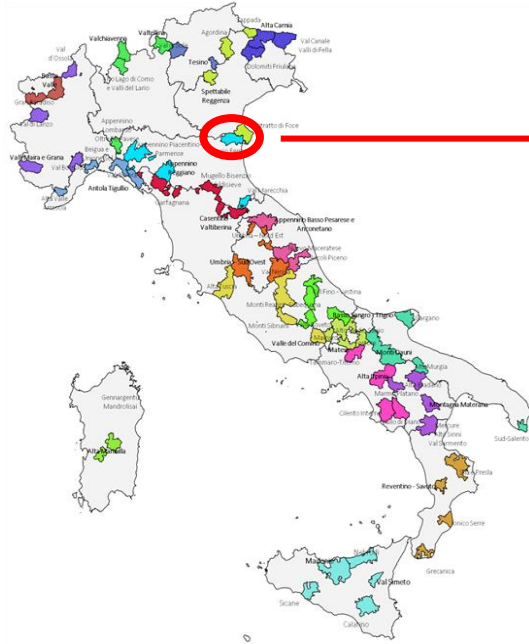
## In the pilot areas that have started the process (55 out of 72)

- ❖ Laser technology (LIDAR) to get information on forests and renew local forestry industry in Alta Carnia (Friuli)
- ❖ Community car-pooling initiative to move inhabitants in Val Maira (Piedmont), with a web platform to manage the service and implemented by a community cooperative
- ❖ Remote class-rooms in secondary schools in Beigua Sol (Liguria) and Piacenza-Parma Apennine (Emilia-Romagna)
- ❖ Equipping local Pharmacy-shops with smart technologies to allow remote diagnostics by hospital personnel in Matese (Molise)
- ❖ Smart devices to allow inhabitants to monitoring landslide and strengthen civil protection in Madonie (Sicily)

## Basso Ferrarese Inner Area and innovation

- ❖ **ICT for telemedicine:** high access to ER and avoidable hospitalization → ICT home heartache diagnostic + the figure of Community Healthcare Assistant
- ❖ **Community cooperatives:** a new kind of cooperatives active in market (tourism, agriculture) and public services (transports, home delivery of food and medicines, ...)

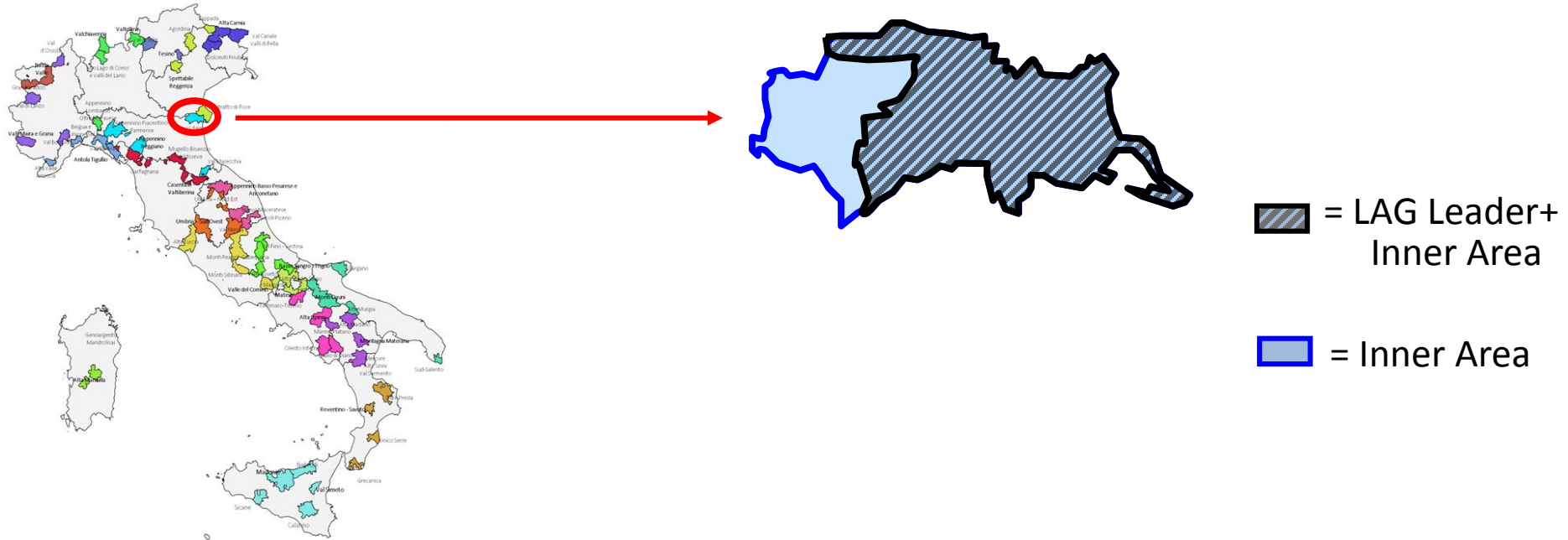
# Inner Area BASSO FERRARESE



 = LAG Leader

 = Inner Area

# Inner Area BASSO FERRARESE



## Relation between IA Strategy and Rural Development Program/LEADER

RDP = one of Regional funds that co-finance the IA Strategy

Being EARF-financed, Leader is allowed to finance projects in the local IA Strategies.

Modalities:

- ❖ financing the whole rural development stream of the strategy (Alta Carnia, Friuli VG) → **substitution of RDP funds**
- ❖ covering projects due to inapplicability/out-of-time of RDP (PC-PR Apennine, Emilia-Romagna) → **complementing RDP**
- ❖ covering projects useful for IA strategy, with the rationale of multiplying financing opportunities (Basso Ferrarese, Emilia-Romagna) → **integrating Inner Areas Strategy**