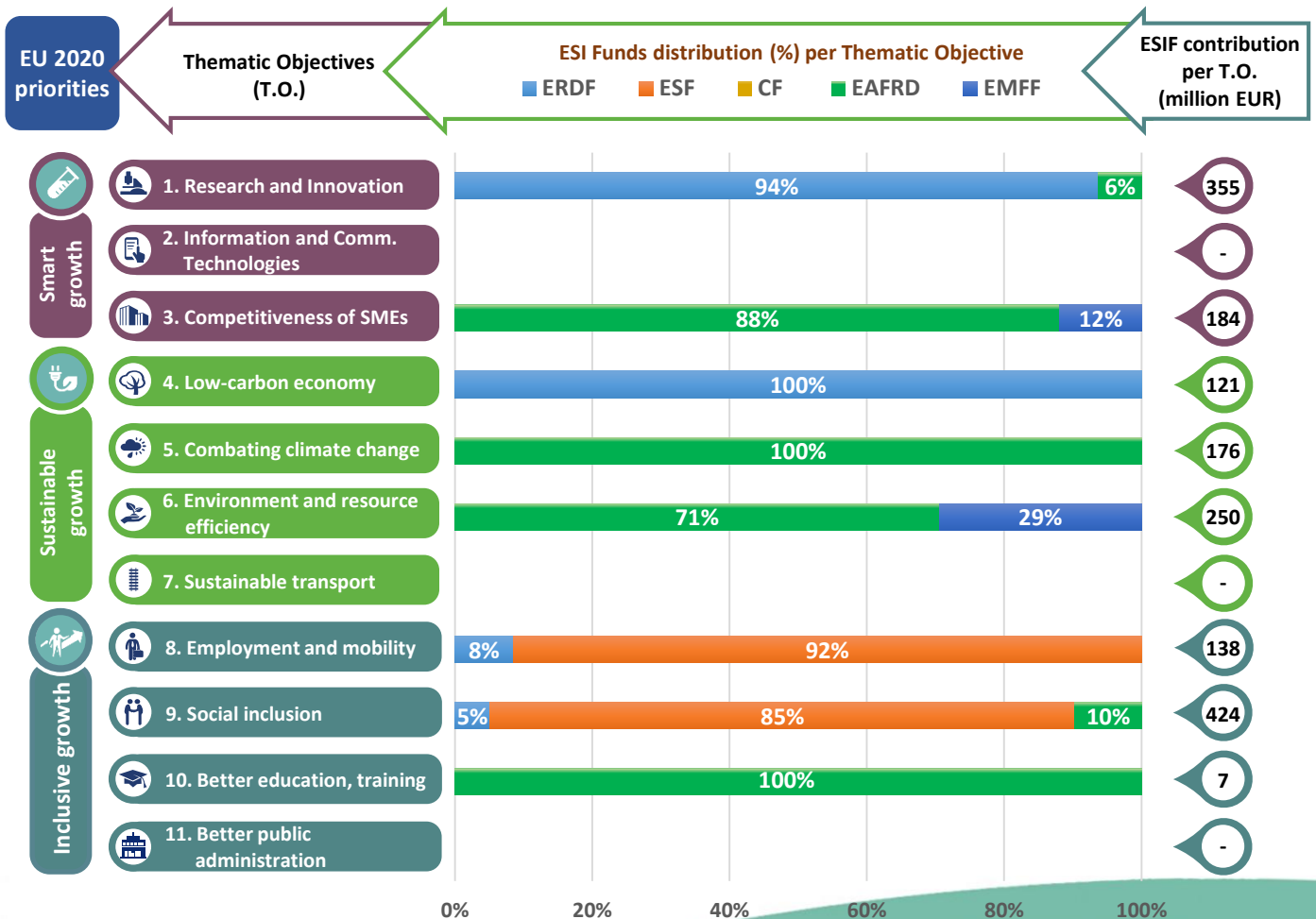
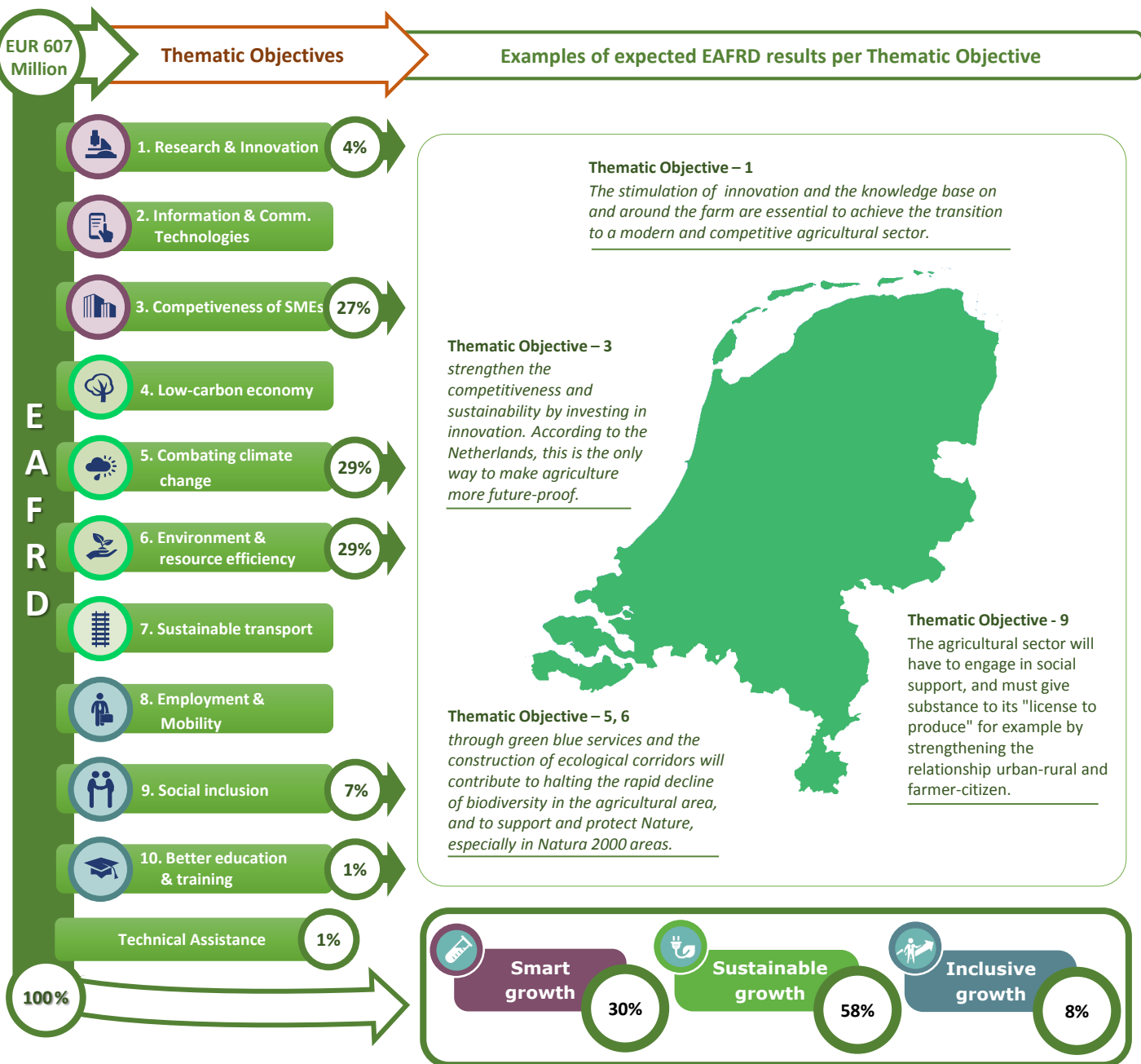


Thematic objectives supported in the Netherlands and ESIF contributions





Integrated approaches to territorial development in rural areas

Community Led Local Development (CLLD) / LEADER

CLLD/LEADER funding in the Netherlands: About 5% of total EAFRD budget

Multi-funded Local Development Strategies: No. The local development strategy is being implemented under the EAFRD LEADER / CLLD groups, while projects can be funded from various funds provided to the responsible management authority of the relevant Fund.

Rural areas population limits derogations: The upper population limit is proposed to be adjusted upwards to 300 000 inhabitants and for Randstad to 350 000 inhabitants.

Responsible body:	Ministry of Economic Affairs
Date of PA approval:	22/08/2014

Please note: The data and figures presented in this summary come from the European Commission approved version of the PA for the Netherlands. The information provided in this summary should not be considered a comprehensive account of the original PA content. For the full information please see the original document.

For more information please visit: http://ec.europa.eu/contracts_grants/agreements/index_en.htm