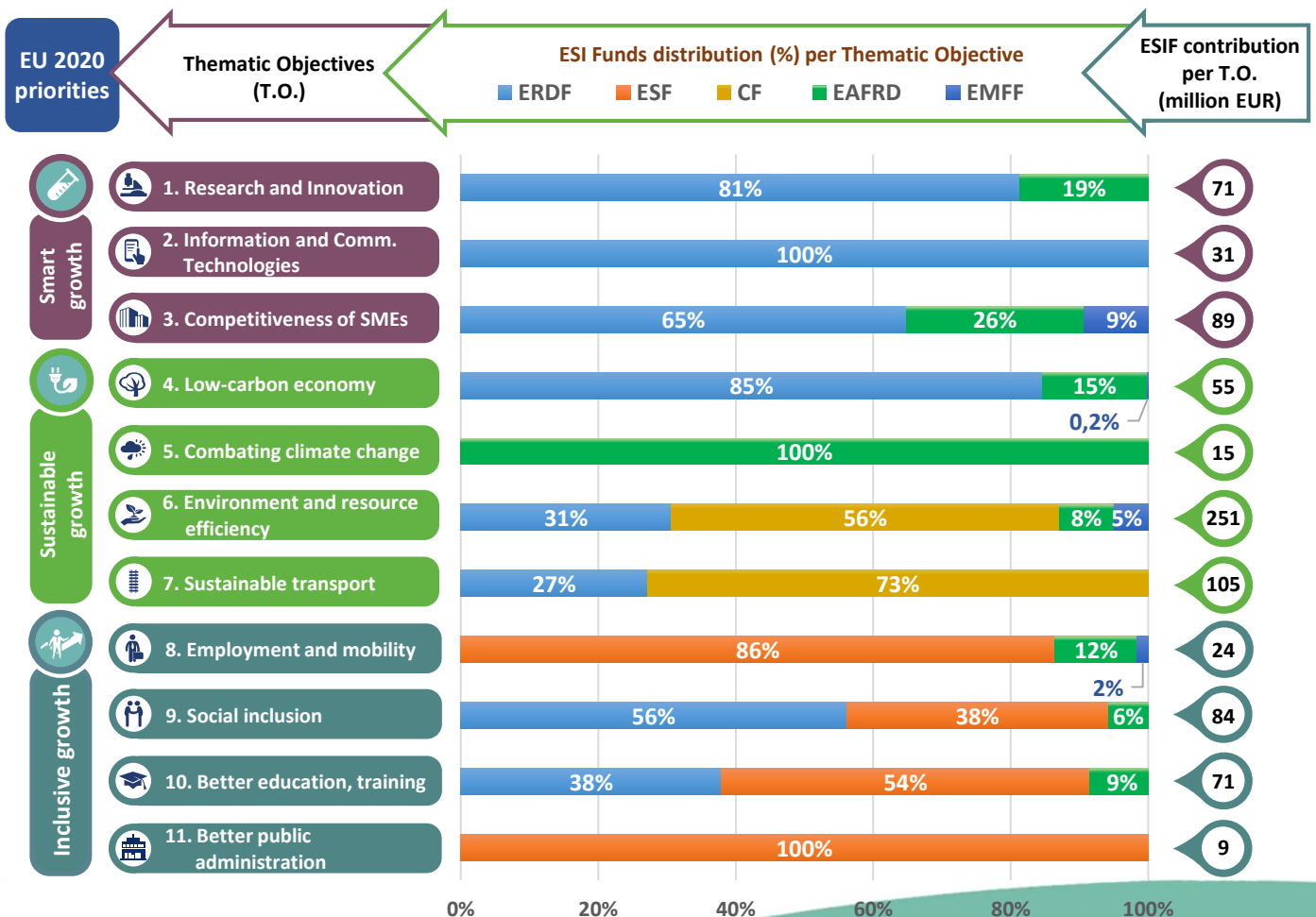
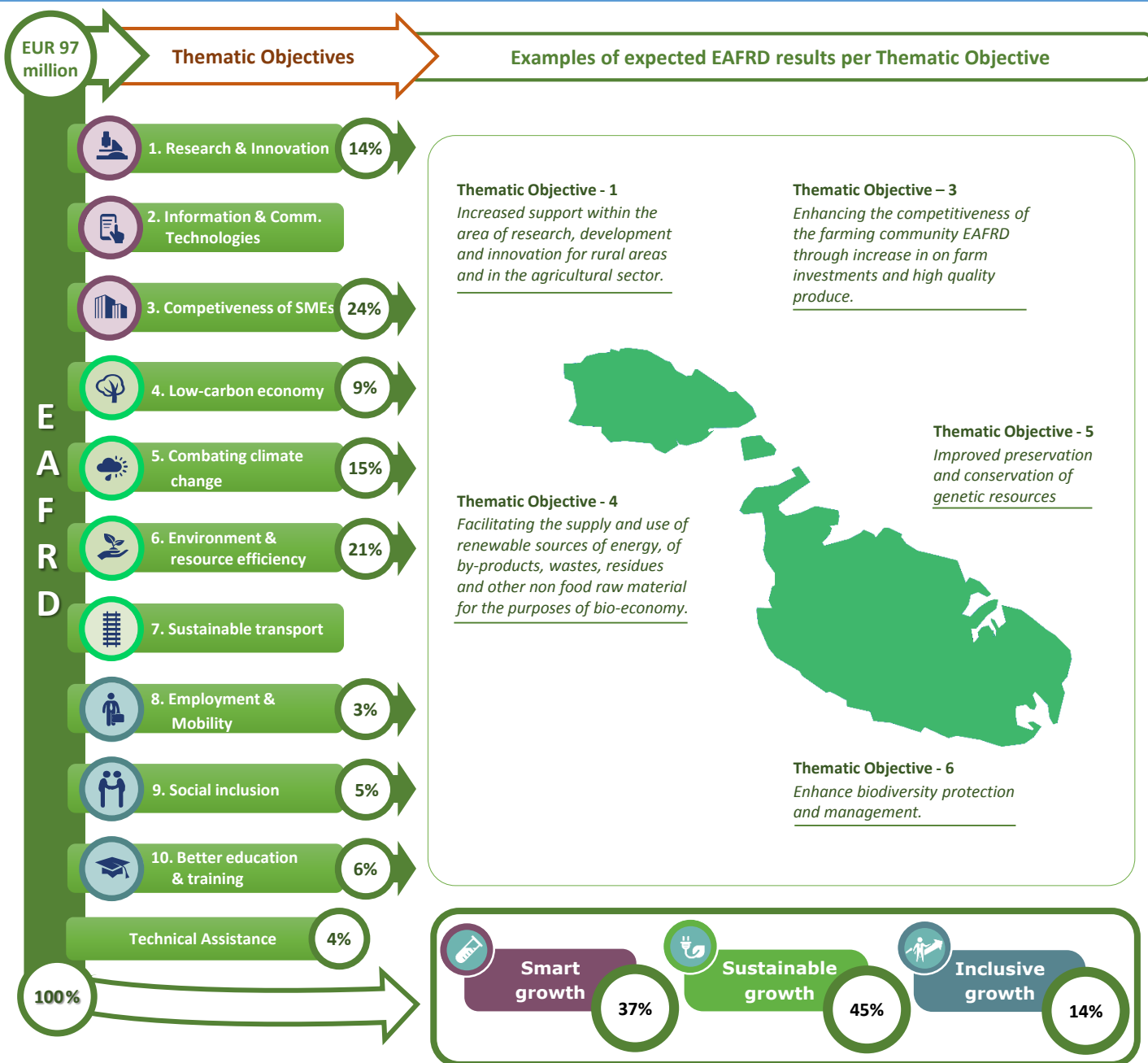


Thematic objectives supported in Malta and ESIF contributions



EAFRD allocation per Thematic Objective & expected results



Integrated approaches to territorial development in rural areas

Community Led Local Development (CLLD) / LEADER

CLLD/LEADER funding in Malta: 5% of the total EAFRD budget.

Multi-funded Local Development Strategies: Not envisaged.

Rural areas population limits: The population limit of 150 000 inhabitants per LAG will not be exceeded.

Responsible body:	Ministry for European Affairs and the Implementation of the Electoral Manifesto (MEAIM) - http://eufunds.gov.mt/en/Pages/Home.aspx
Date of PA approval:	29/10/2014

Please note: The data and figures presented in this summary come from the European Commission approved version of the PA for Malta. The information provided in this summary should not be considered a comprehensive account of the original PA content. For the full information please see the original document.

For more information please visit: http://ec.europa.eu/contracts_grants/agreements/index_en.htm