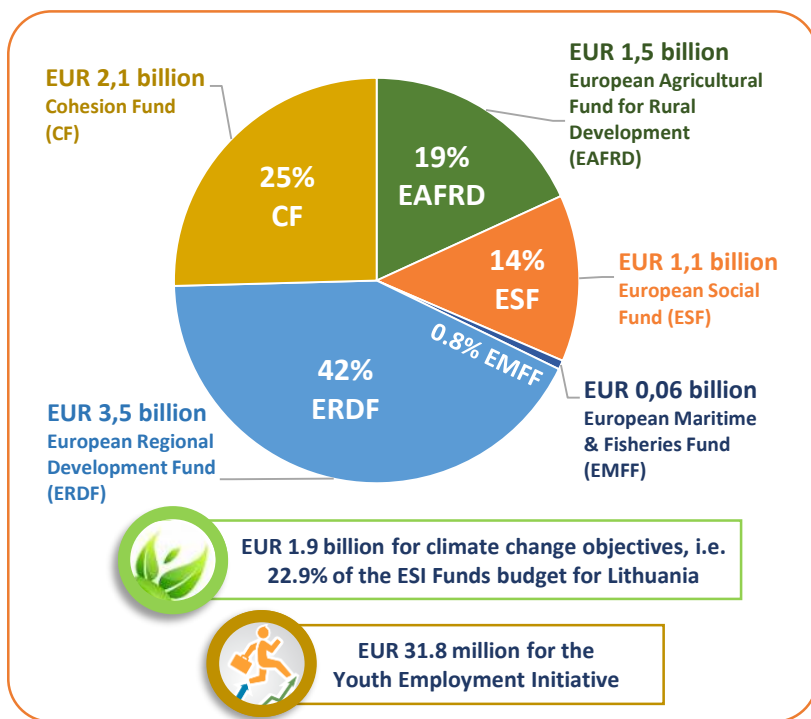
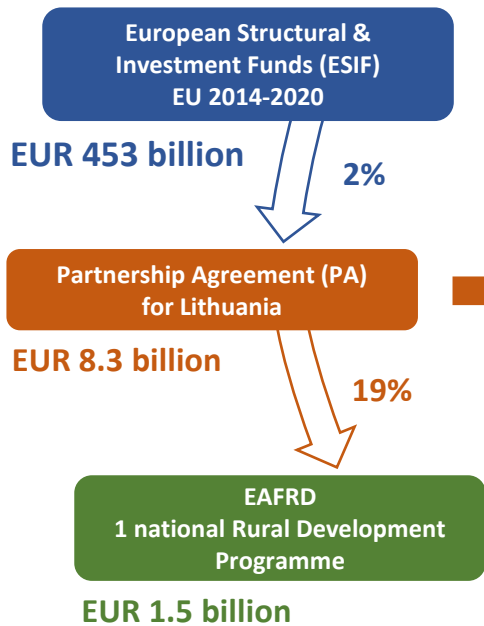
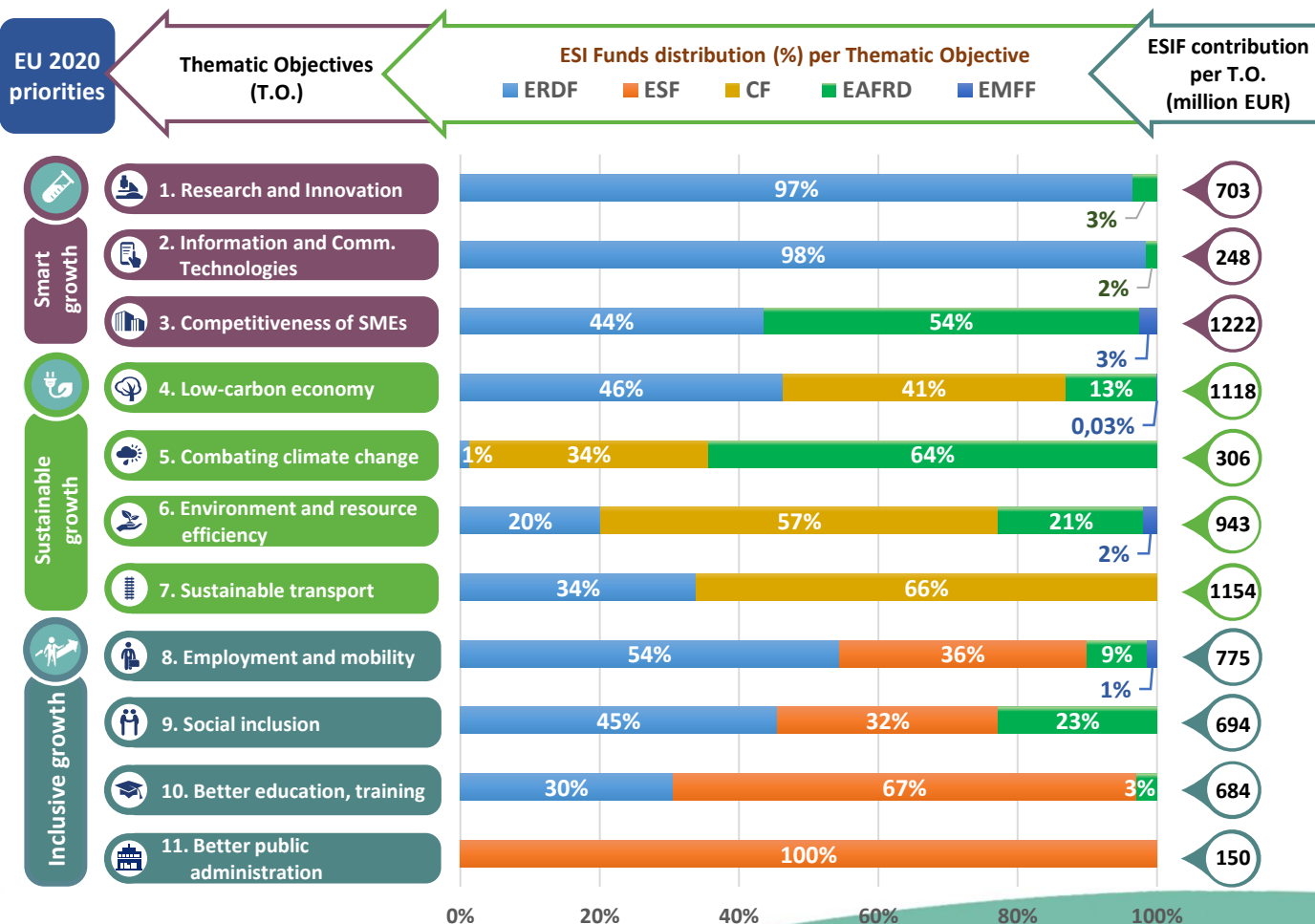
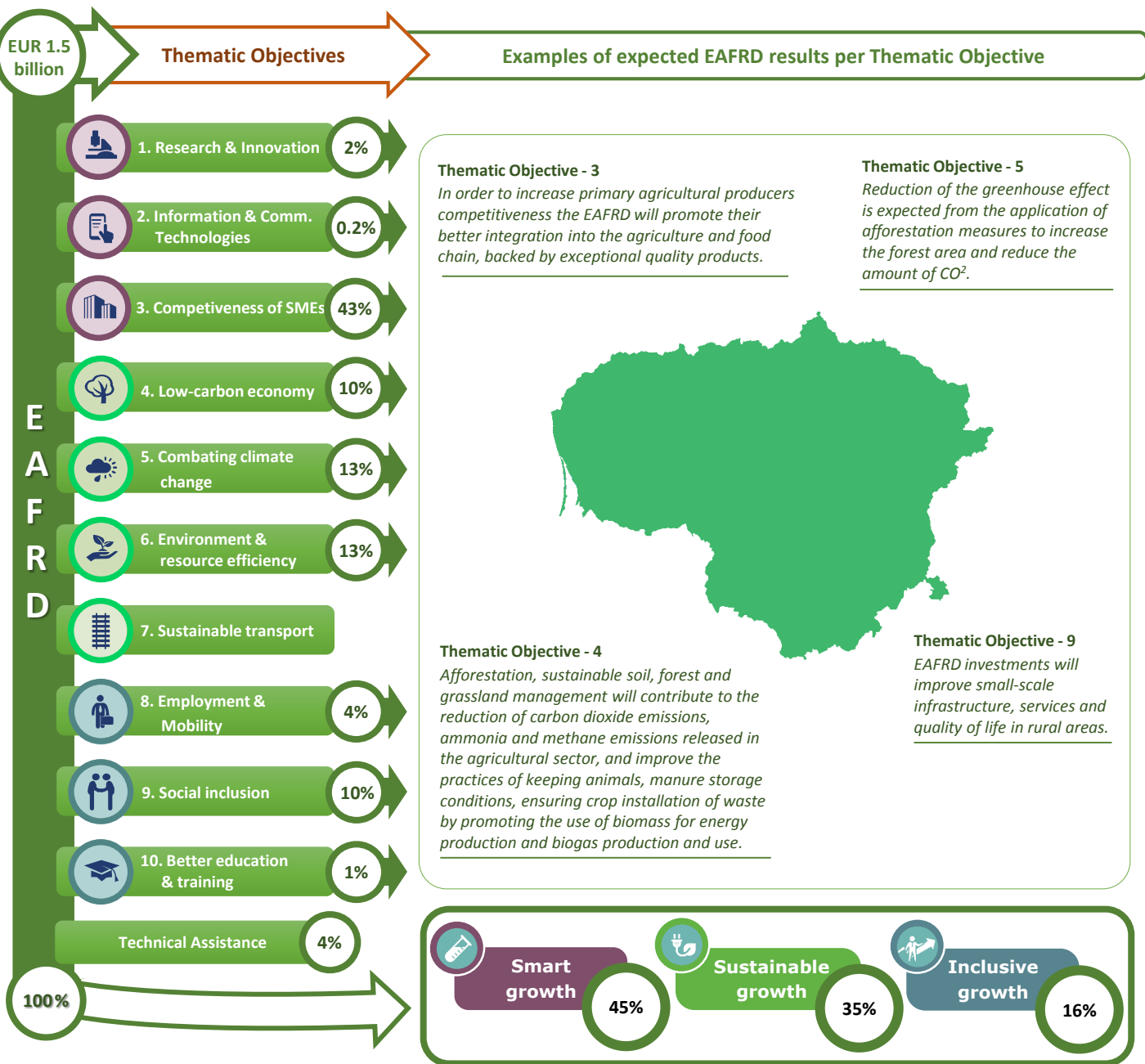


LITHUANIA



Thematic objectives supported in Lithuania and ESIF contributions





Integrated approaches to territorial development in rural areas

Community Led Local Development (CLLD) / LEADER

CLLD/LEADER funding in Lithuania: Minimum 5% of total EAFRD budget.

Multi-funded Local Development Strategies (LDS) in rural areas: Yes, including EAFRD and EMFF support in overlapping rural and fisheries Local Action Groups' areas.

Rural areas population limits derogations: Between 6 000 to 150 000 inhabitants covering residential rural areas, as well as towns with population under 6 000 inhabitants (except for municipal centres).

Responsible body:	Ministry of Finance and Ministry of Agriculture
Date of PA approval:	20/06/2014

Please note: The data and figures presented in this summary come from the European Commission approved version of the PA for Lithuania. The information provided in this summary should not be considered a comprehensive account of the original PA content. For the full information please see the original document.

For more information please visit: http://ec.europa.eu/contracts_grants/agreements/index_en.htm