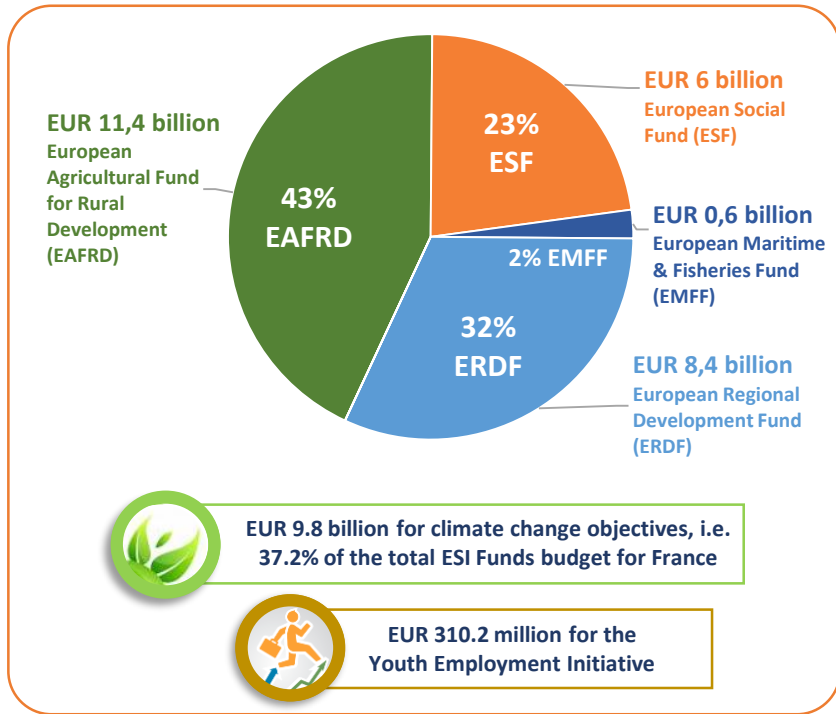
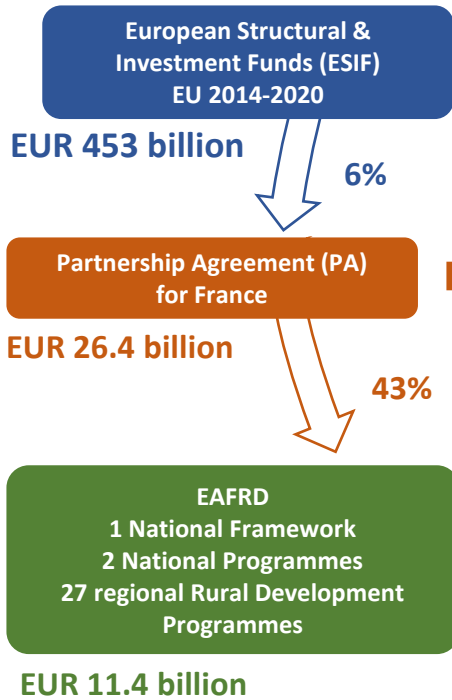
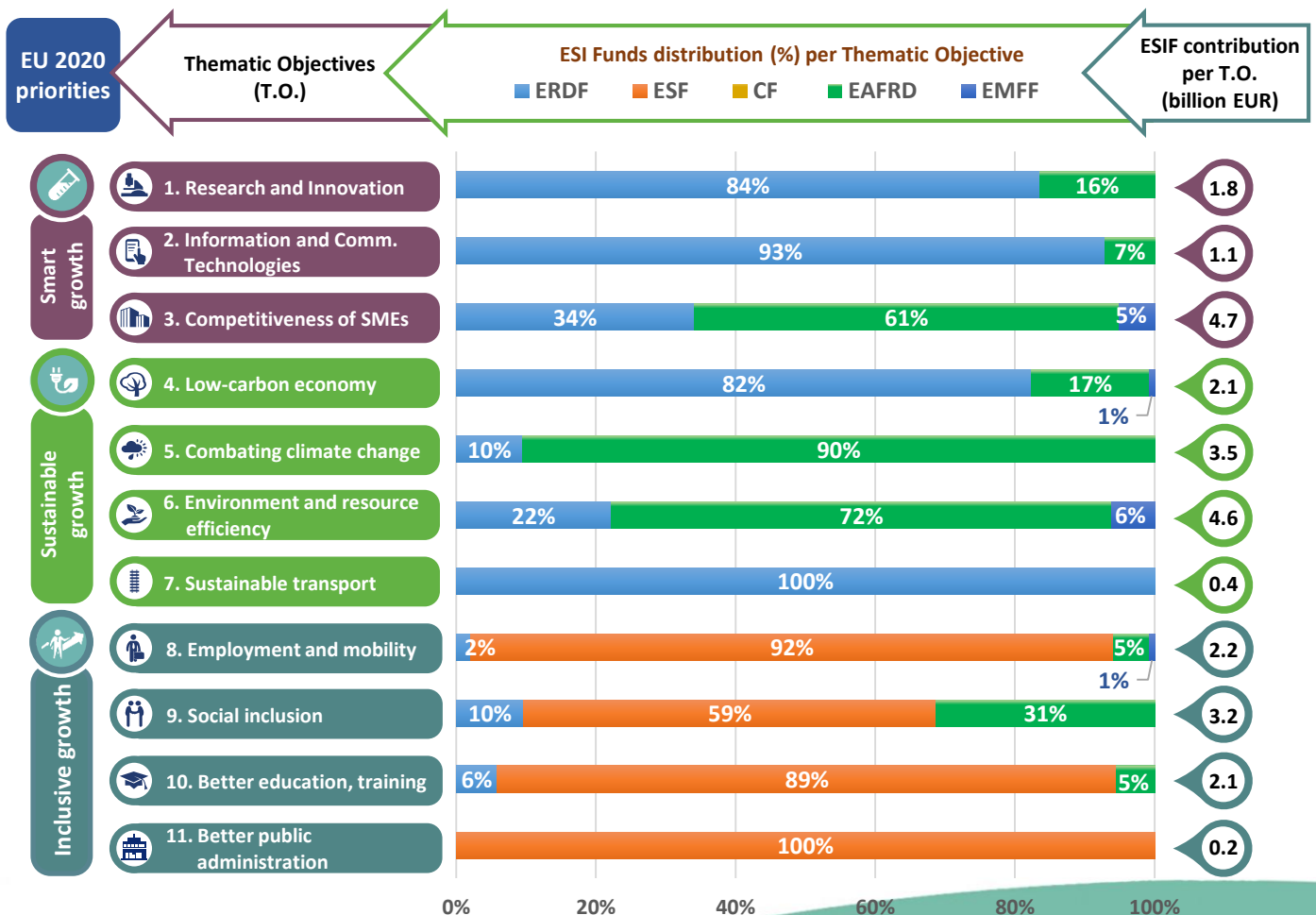
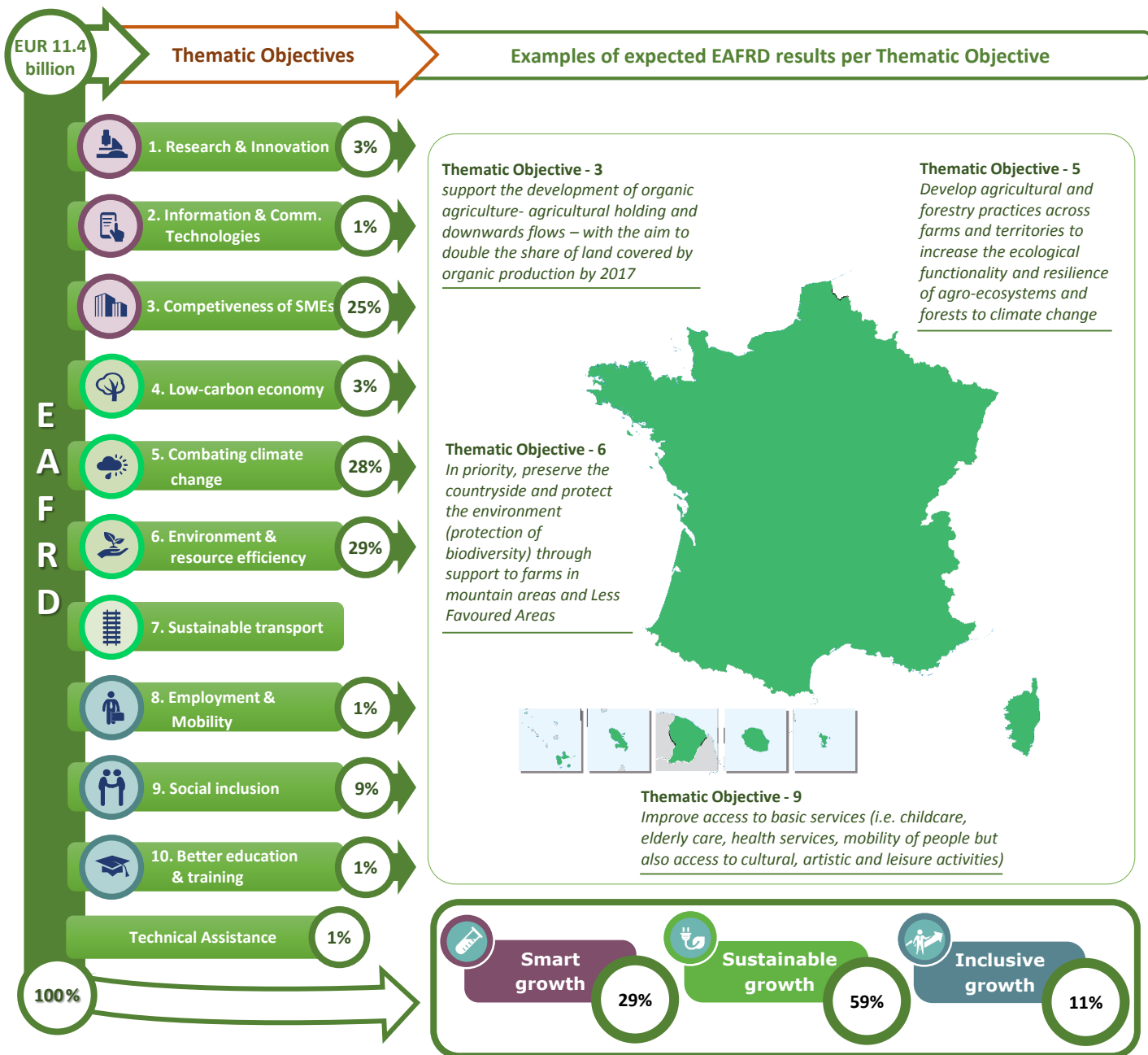


## FRANCE



## Thematic objectives supported in France and ESIF contributions





## Integrated approaches to territorial development in rural areas

### Community Led Local Development (CLLD) / LEADER

**CLLD/LEADER funding in France:** On average at national level around 10% of the EAFRD support.

**Multi-funded Local Development Strategies:** Yes, synergies between local groups and fisheries groups Leader will be sought for territories where a multi-fund approach is relevant.

**Rural areas population limits derogations:**

- Island territories that are below the threshold of 10 000 inhabitants;
- Territories including strongly connected urban areas and exceeding the ceiling of the 150 000 but forming a coherent territory in response to a local development strategy;
- In organised territories that have experienced demographic changes during the 2007-2013 programming period, so that they can implement CLLD for 2014-2020.

<b>Responsible body:</b>	CGET – Commissariat Général à l’Egalité des Territoires
<b>Date of PA approval:</b>	8/8/2014

**Please note:** The data and figures presented in this summary come from the European Commission approved version of the PA for France. The information provided in this summary should not be considered a comprehensive account of the original PA content. For the full information please see the original document.

For more information please visit: [http://ec.europa.eu/contracts\\_grants/agreements/index\\_en.htm](http://ec.europa.eu/contracts_grants/agreements/index_en.htm)