

# PUGLIA - ITALY

## Basic Information:

The Rural Development Programme (RDP) of the Puglia region has budgeted for 2007-2013 a total public expenditure of €1.6 billion (European Agricultural Fund for Rural Development and Member State contribution). At the end of 2013, €1 billion has been spent out of the allocated budget (see figure 1).

**Axis 1** – (Improving the competitiveness of the agricultural and forestry sector) has spent 73% of its allocated budget.

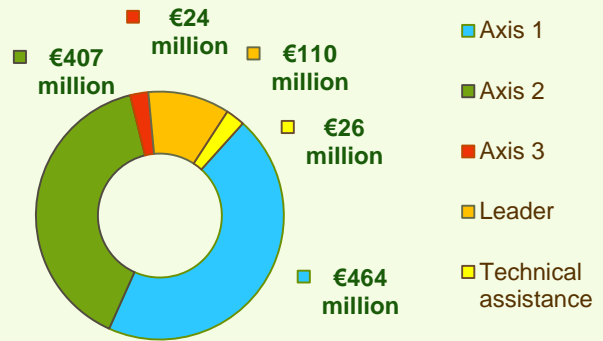
**Axis 2** – (Improving the environment and the countryside) has utilised 70% of its programmed expenditure.

**Axis 3** – (Improving the quality of life in rural areas) has utilised nearly 45% of its budget.

**Axis 4** – (Leader) has used around 39% of its programmed expenditure.

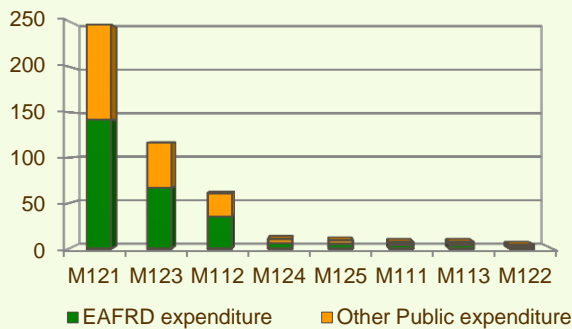


**Figure 1: Total Public Expenditure from 2007 to 2013 in Puglia & expenditure per Axis**

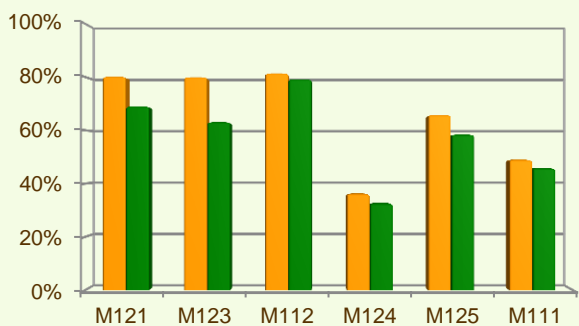


## Axis 1 - Improving the competitiveness of the agricultural and forestry sector

**Figure 2: Axis 1 - Total Public expenditure per measure in million EURO (2007-2013)**



**Figure 3: Axis 1 – Total public expenditure (2007-2013) against 2007-13 budgets, main measures**



■ Total Public expenditure (%) against 2007-2013 budgets / Regional level  
 ■ Total Public expenditure (%) against 2007-2013 budgets / National level

Axis 1 places an emphasis on the Modernisation of agricultural holdings (M121) and Adding value to agricultural and forestry products (M123), allocating to these two measures over 71% of the overall budgeted funds for Axis 1. Analysis of the expenditure rates per measure up to 2013 shows that:

- ❖ Setting up of young farmers (M112), Modernisation of agricultural holdings (M121) and Adding value to agricultural and forestry products (M123) have used 81% of their programmed expenditure.
- ❖ Two measures have utilised 60-70% of their allocated budgets, namely:
  - Infrastructure related to the development and adaptation of agriculture (M125), 66% and
  - Early retirement (M113), 61%.
- ❖ Three measures have utilised approximately 35-50% of their allocated budgets, namely:
  - Vocational training and information actions (M111), 49%
  - Improvement of the economic value of forests (M122), 40% and
  - Cooperation for development of new products, etc. (M124), 36%.
- ❖ Finally, for, Use of advisory services (M114), Participation of farmers in food quality schemes (M132) and Information and promotion activities (M133) minimal or no expenditure has been recorded up to 2013.

Figure 3 indicates the progress of the total public expenditure of the most important measures of Axis 1 against the 2007-2013 budgets, in comparison to the National level.

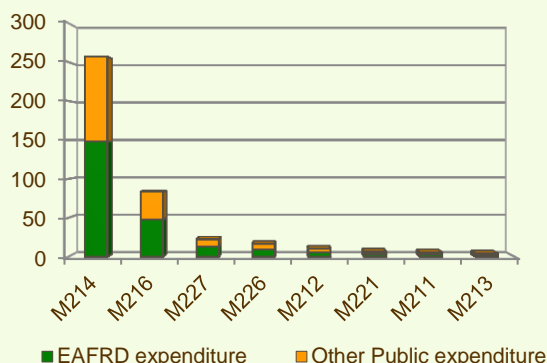
# PUGLIA - ITALY

## Axis 2 - Improving the environment and the countryside

Axis 2 focuses on Agri-environment payments (M214) and Non-productive investments – agriculture (M216). The two measures represent the majority of Axis 2 expenditure (see figure 4). Together they have been allocated nearly 26% of the total public budget programmed in the Puglia RDP for 2007-2013.

- ❖ Non-productive investments – agriculture (M216) has utilised all of its allocated expenditure.
- ❖ Payments to farmers in areas with handicaps, other than mountain (M212) has used 83% of its allocated funds.
- ❖ Natural handicap payments to farmers in mountain areas (M211) and Agri-environment payments (M214) have spent accordingly 77% and 73% of their planned budgets.
- ❖ Two measures have utilised from 40-60% of their programmed expenditure:
  - Non-productive investments – forestry (M227), 57% and
  - Restoring forestry potential and introducing prevention actions (M226), 42%.
- ❖ First afforestation of agricultural land (M221) and Natura 2000 payments linked to Directive 2000/60/EC have spent accordingly 28% and 21% of their planned budgets.
- ❖ Finally, for First afforestation of non-agricultural land (M223) minimal expenditure has been recorded up to the end of 2013.

**Figure 4: Axis 2 - Total Public expenditure per measure in million EURO (2007-2013)**



**Figure 5: Axis 2 – Total public expenditure (2007-2013) against 2007-13 budgets, main measures**

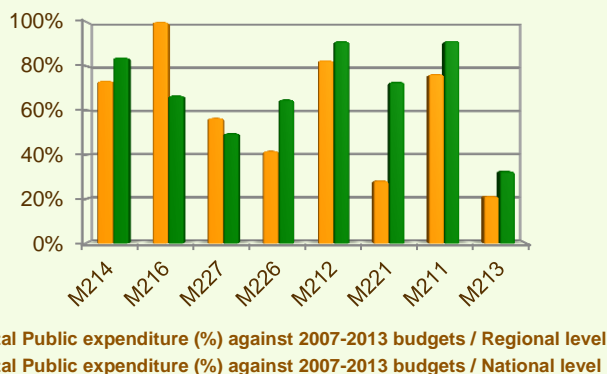
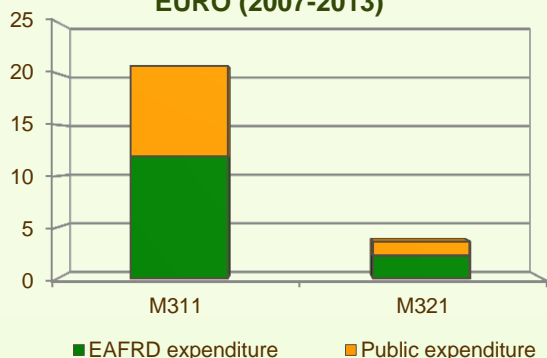


Figure 5 indicates the progress of the total public expenditure of the most important measures of Axis 2 against the 2007-2013 budgets, in comparison to the National level.

## Axis 3 - Quality of life in rural areas and diversification of the rural economy

**Figure 6: Axis 3 - Total Public expenditure per measure in million EURO (2007-2013)**



Axis 3 of the Puglia RDP focuses on Diversification into non-agricultural activities (M311) and Basic services for the economy and rural population (M321) which together represent nearly 76% of the Axis budget.

As shown in figure 6, the Diversification into non-agricultural activities measure (M311) has utilised 94% of its programmed budget while the Basic services for the economy and rural population (M321) has spent 19% of its allocated expenditure.

Up to 2013, no expenditure has been recorded for the other three measures (M313, M323, M331).

# PUGLIA - ITALY

## Axis 3 - Quality of life in rural areas and diversification of the rural economy

**Figure 7: Axis 3 – Total public expenditure (2007-2013) against 2007-13 budgets, main measures**

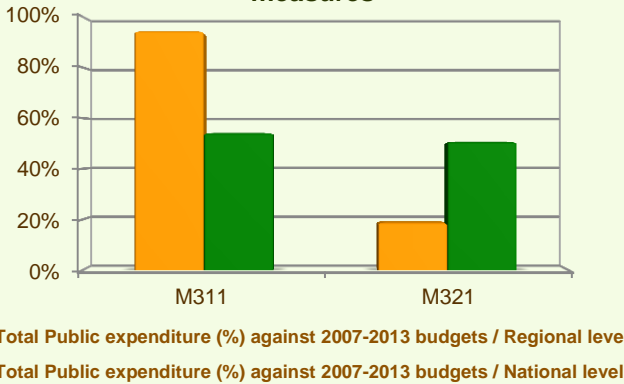


Figure 7 indicates the progress of the total public expenditure of the most important measures of Axis 3 against the 2007-2013 budgets, in comparison to the National level.

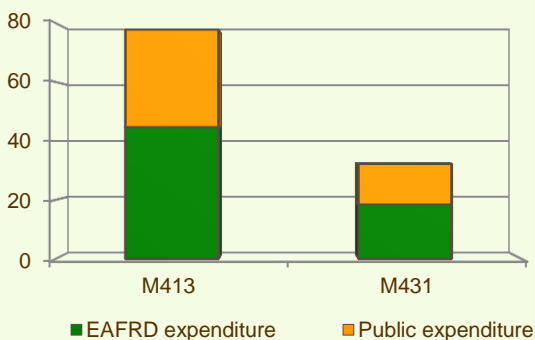
## Axis 4 - Leader

The Leader Axis in the Puglia RDP has allocated budget of €283 million out of which €110 million have been spent by 2013. Within the Axis, emphasis has been given to Quality of life/diversification (M413) which has been allocated the largest share of funds.

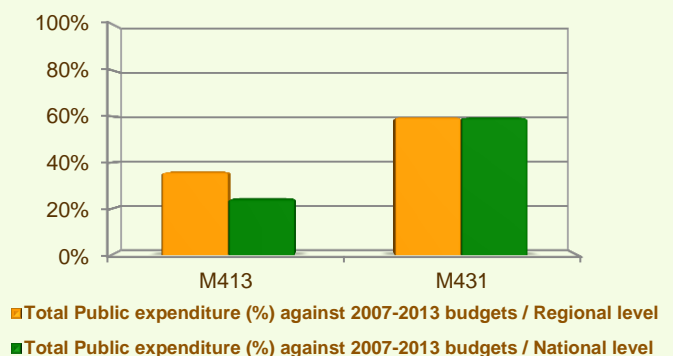
As shown in figure 8, the measure on Running the LAG, skills acquisition, animation (M431) has utilised 60% of its programmed expenditure. The measure on Quality of life/diversification (M413) has spent 36% of its planned expenditure. The measure Implementing cooperation projects (M421) present no expenditure up to the end of 2013.

Figure 9 provides an indication of the progress of the total public expenditure on the most important measures of Axis 4 against the 2007-2013 budgets, in comparison to the National level.

**Figure 8: Axis 4 - Total Public expenditure per measure in million EURO (2007-2013)**



**Figure 9: Axis 4 – Total public expenditure (2007-2013) against 2007-13 budgets at national and regional level**

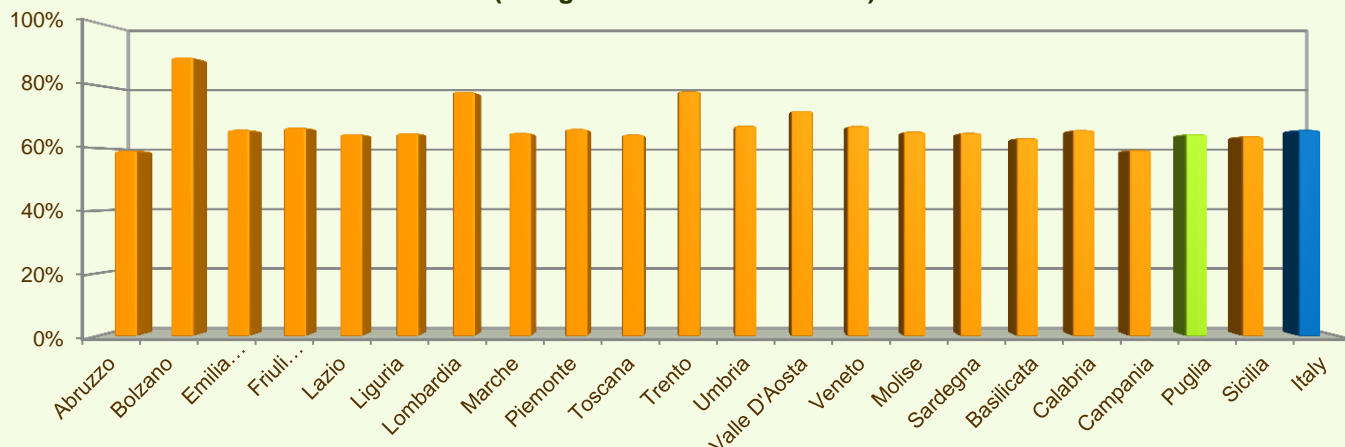


# PUGLIA - ITALY

## Summary

- ✓ Within seven years of implementation, the Puglia RDP has utilised 65% (see figure 10) of the total public expenditure planned for the current Programming Period (including post Health Check and the European Economic Recovery Package modifications).
- ✓ Agri-environment payments (M214) is the measure with the highest allocated budget in the Puglia RDP. Up to 2013, it has utilised 73% of its available budget and represents 25% of the total public expenditure of the programme.
- ✓ Modernisation of agricultural holdings (M121) has the second largest budget in the Puglia RDP and the utilised expenditure is 80% of its allocated funds. M121 represents 24% of the total public expenditure of the programme.
- ✓ The third largest measure budget is for Quality of life/diversification (M413) which has used almost 36% of its programmed total public expenditure and represents 8% of the total public expenditure of the programme.

**Figure 10: Progress of total public expenditure up to 2013 (at regional and national level)**



**Source of the data:**

1) Programmed expenditures 2007-2013: RDP budget allocation following Health Check revision (December 2013)

2) Expenditures 2007-2013 DG AGRI

3) Output indicators data are available only at National level; therefore at regional level a comparison of financial implementation progress is provided between the regional RDPs.

For further detailed information on financial / physical and output indicators data please refer to the dedicated ENRD website section on Monitoring Indicators.



<http://enrd.ec.europa.eu>