

PIEMONTE - ITALY

Basic Information:

The Rural Development Programme (RDP) of the Piemonte region has budgeted for 2007-2013 a total public expenditure of €974 million (European Agricultural Fund for Rural Development and Member State contribution). At the end of 2013, €646 million were spent out of the allocated budget (see figure 1).

Axis 1 – (Improving the competitiveness of the agricultural and forestry sector) has utilised 65% of its allocated budget.

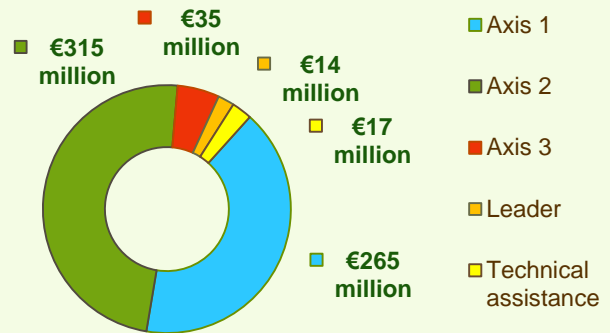
Axis 2 – (Improving the environment and the countryside) has used 77% of its programmed expenditure.

Axis 3 – (Improving the quality of life in rural areas) has spent nearly 43% of its budget.

Axis 4 – (Leader) has utilised around 26% of its programmed expenditure.



Figure 1: Total Public Expenditure from 2007 to 2013 in Piemonte & expenditure per Axis



Axis 1 - Improving the competitiveness of the agricultural and forestry sector

Figure 2: Axis 1 - Total Public expenditure per measure in million EURO (2007-2013)

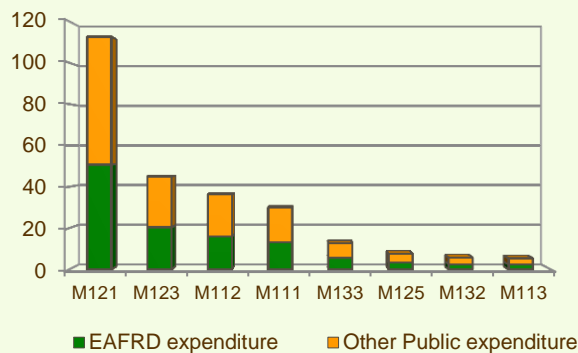
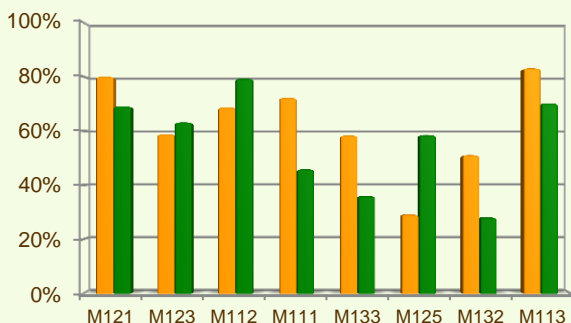


Figure 3: Axis 1 – Total public expenditure (2007-2013) against 2007-13 budgets, main measures



■ Total Public expenditure (%) against 2007-2013 budgets / Regional level
 ■ Total Public expenditure (%) against 2007-2013 budgets / National level

Axis 1 places an emphasis on the Modernisation of agricultural holdings (M121) and Adding value to agricultural and forestry products (M123), allocating to these two measures over 53% of the overall budgeted funds for Axis 1. Analysis of the expenditure rates per measure up to 2013 shows that:

- ❖ The following measures have utilised 80-85% of their allocated budgets:
 - Improvement of the economic value of forests (M122), 85%
 - Early retirement (M113), 83% and
 - Modernisation of agricultural holdings (M121), 80%.
- ❖ Vocational training and information actions (M111) and Setting up of young farmers (M112) have utilised respectively 72% and 69% of their programmed expenditure.
- ❖ Adding value to agricultural and forestry products (M123) and Information and promotion activities (M133) has utilised around 58% of their budgets.
- ❖ Participation of farmers in food quality schemes (M132), Use of advisory services (M114) and Infrastructure related to the development and adaptation of agriculture (M125) have spent respectively 51%, 31% and 29% of their budgets.
- ❖ Finally, Cooperation for development of new products, etc. (M124) has utilised 12% of its planned funds.

Figure 3 indicates the progress of the total public expenditure of the most important measures of Axis 1 against the 2007-2013 budgets, in comparison to the National level.

PIEMONTE - ITALY

Measure 121 & 214 project example: Co-operation, Diversity, Quality and Sustainability (Valli Unite) / Italy - Piemonte

The project used EAFRD funds to enhance the principles of product quality, farm multi-functionality, and organic management of the farmland. The beneficiary cooperative of about 15 members and 15 employees, aimed at adopting more sustainable approaches that contribute to the preservation of the landscape and at increasing its products' added value. Diversification was also a priority through agri-tourism, setting up a restaurant and camping facilities and a shop for direct sales.

It integrated two RDP measures: 121 (farm modernisation) and 214 (agri-environment). New wine storehouse was built, together with wine production plant allowing the traceability of the product. Pig breeding activity improved by building new paddocks and a manure yard. The project increased the competitiveness of the cooperative and its visibility in other Italian regions, securing the economic viability of the area.

Project budget was less than €20,000.

Link: http://enrd.ec.europa.eu/policy-in-action/rdp_view/en/view_projects_en.cfm?action=detail&backfuse=jsview&postcard_id=981

Axis 2 - Improving the environment and the countryside

Axis 2 focuses on Agri-environment payments (M214). The measure represents the majority of Axis 2 expenditure (see figure 4) and has been allocated nearly 29% of the total public budget programmed in the Piemonte RDP for 2007-2013.

- ❖ Two out of the seven measures offered by the Axis have utilised more than 75% of their programmed expenditure, namely:
 - Agri-environment payments (M214), 86% and
 - Natural handicap payments to farmers in mountain areas (M211), 75%.
- ❖ First afforestation of agricultural land (M221) has spent 64% of its budget.
- ❖ Animal welfare payments (M215) has utilised 48% of its allocated budget.
- ❖ Restoring forestry potential and introducing prevention actions (M226) has utilised 31% of its programmed expenditure.
- ❖ Finally, for Non-productive investments – agriculture (M216), Forest environment payments (M225) and Non-productive investments – forestry (M227), minimal or no expenditure has been recorded up to the end 2013.

Figure 5 indicates the progress of the total public expenditure of the most important measures of Axis 2 against the 2007-2013 budgets, in comparison to the National level.

Figure 4: Axis 2 - Total Public expenditure per measure in million EURO (2007-2013)

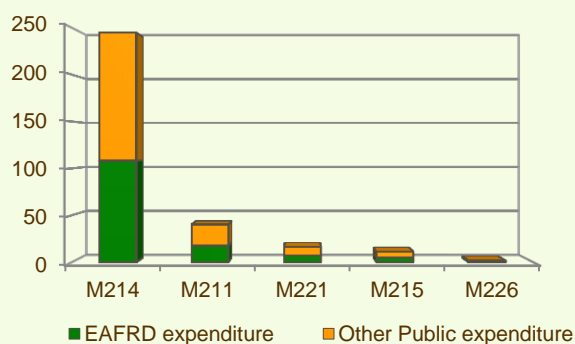
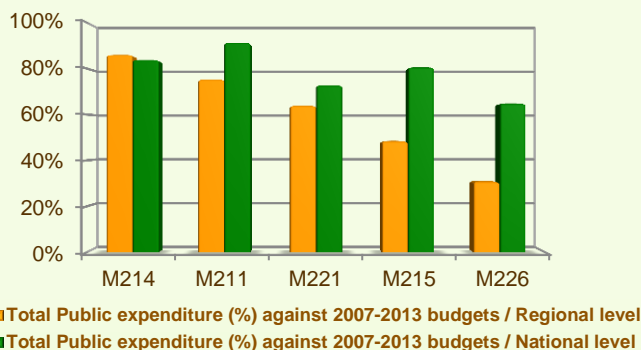


Figure 5: Axis 2 – Total public expenditure (2007-2013) against 2007-13 budgets, main measures



PIEMONTE - ITALY

Axis 3 - Quality of life in rural areas and diversification of the rural economy

Figure 6: Axis 3 - Total Public expenditure per measure in thousand EURO (2007-2013)

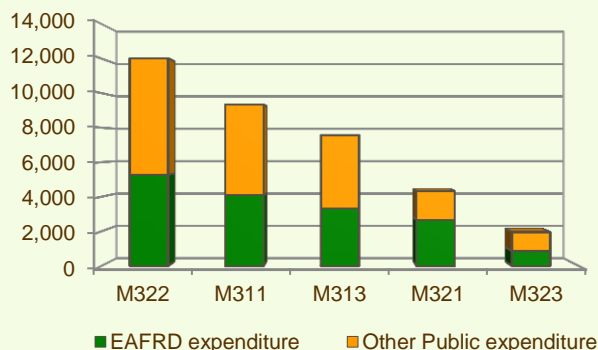
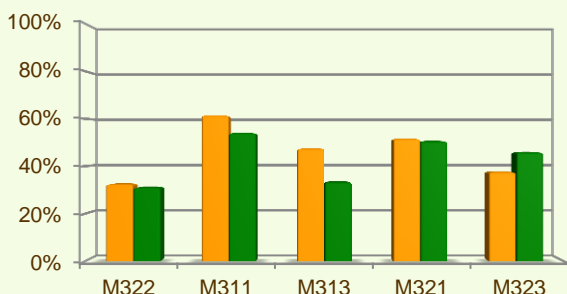


Figure 7: Axis 3 – Total public expenditure (2007-2013) against 2007-13 budgets, main measures



■ Total Public expenditure (%) against 2007-2013 budgets / Regional level
 ■ Total Public expenditure (%) against 2007-2013 budgets / National level

Axis 3 of the Piemonte RDP focuses on Village renewal and development (M322), Encouragement of tourism activities (M313) and Diversification into non-agricultural activities (M311), which together represent 83% of the Axis budget.

When comparing the expenditure rates per measure up to 2013 it is observed that:

- ❖ Support for business creation and development (M312) and Skills acquisition and animation (M341) have utilised 100% of their budget.
- ❖ Diversification into non-agricultural activities (M311), and Basic services for the economy and rural population (M321) have spent accordingly 62% and 52% of their planned funds.
- ❖ Conservation and upgrading of the rural heritage (M323) and Encouragement of tourism activities (M313) have spent 38% and 48% of their budgets.
- ❖ Finally, for the measure Village renewal and development (M322), 32% of its allocated budget has been used up to the end of 2013.

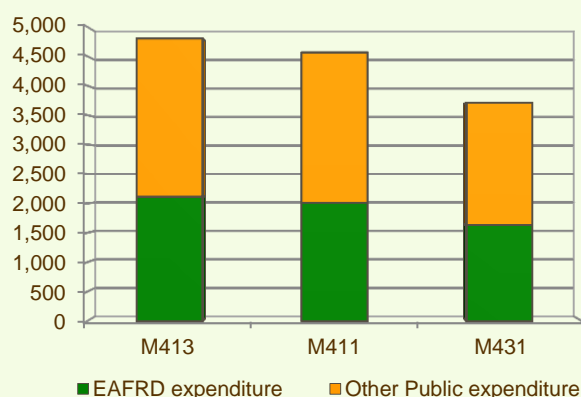
Figure 7 indicates the progress of the total public expenditure of the most important measures of Axis 3 against the 2007-2013 budgets, in comparison to the National level.

Axis 4 - Leader

The Leader Axis in the Piemonte RDP has allocated budget of €53 million out of which €14 million was spent by 2013. Within the Axis emphasis has been given to Quality of life/diversification (M413), which has been allocated the largest share of funds.

- ❖ Running the LAG, skills acquisition, animation (M431) has used 50% of its programmed expenditure.
- ❖ Competitiveness (M411) has spent 39% of its allocated budget.
- ❖ Quality of life/diversification (M413) and Environment/land management (M412) have utilised 16% and 18% respectively of their budget.

Figure 8: Axis 4 - Total Public expenditure per measure in thousand EURO (2007-2013)



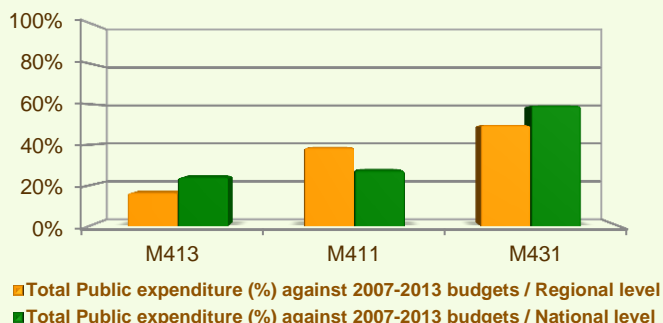
PIEMONTE - ITALY

Axis 4 - Leader

- ❖ No expenditures have been recorded for Implementing cooperation projects (M421) up to the end of 2013.

Figure 9 indicates the progress of the total public expenditure of the most important measures of Axis 4 against the 2007-2013 budgets, in comparison to the National level.

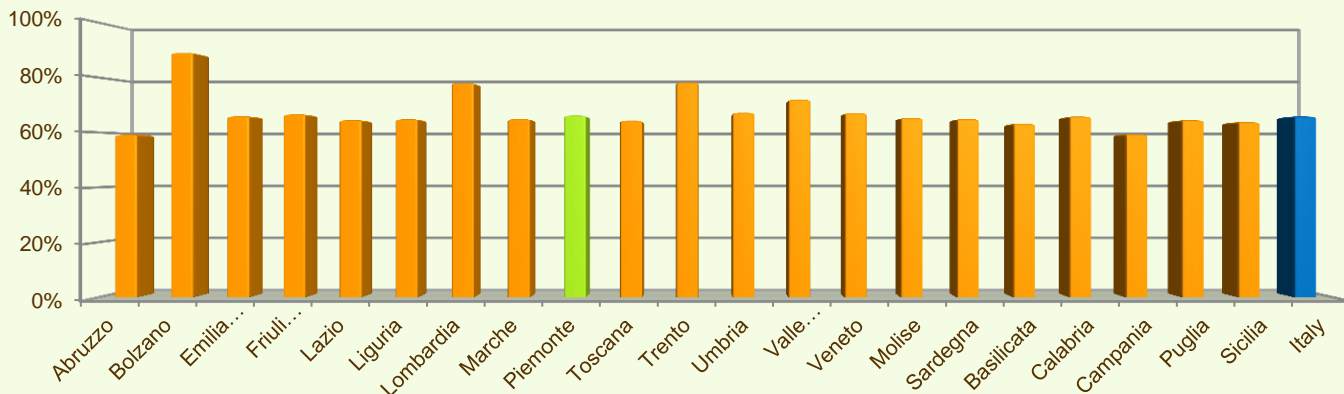
Figure 9: Axis 4 – Total public expenditure (2007-2013) against 2007-13 budgets on measure 431 at regional and national level



Summary

- ✓ Within seven years of implementation, the Piemonte RDP has utilised nearly 66% (see figure 10) of the total public expenditure planned for the current Programming Period (including post Health Check and the European Economic Recovery Package modifications).
- ✓ Agri-environment payments (M214) is the measure with the highest allocated budget in the Piemonte RDP. Up to 2013, it has utilised 86% of its available budget and represents 38% of the total public expenditure of the programme.
- ✓ Modernisation of agricultural holdings (M121) has the second largest budget in the Piemonte RDP and the utilised expenditure is 80% of its allocated funds. M121 represents 17% of the total public expenditure of the programme.
- ✓ The third largest measure budget is for Adding value to agricultural and forestry products (M123) which has used almost 59% of its programmed total public expenditure and represents 7% of the total public expenditure of the programme.

Figure 10: Progress of total public expenditure up to 2013 (at regional and national level)



Source of the data: 1) Programmed expenditures 2007-2013: RDP budget allocation following Health Check revision (December 2013); 2) Expenditures 2007-2013: DG AGRI 3) Output indicators data are available only at National level; therefore at regional level a comparison of financial implementation progress is provided between the regional RDPs.

For further detailed information on financial / physical and output indicators data please refer to the dedicated ENRD website section on Monitoring Indicators.