

# EMILIA ROMAGNA - ITALY

## Basic Information:

The Rural Development Programme (RDP) of the Emilia Romagna region has budgeted for 2007-2013 a total public expenditure of €1.1 billion (European Agricultural Fund for Rural Development and Member State contribution). At the end of 2013, €765 million were spent out of the allocated budget (see figure 1).

**Axis 1** – (Improving the competitiveness of the agricultural and forestry sector) has spent 59% of its allocated budget.

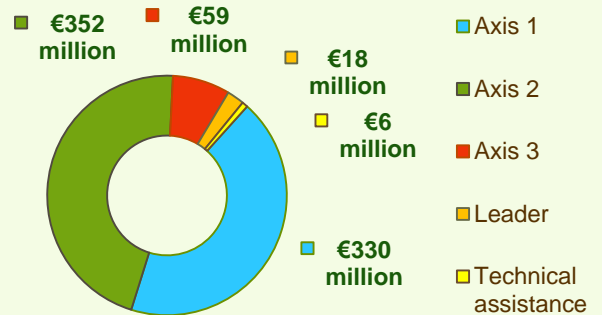
**Axis 2** – (Improving the environment and the countryside) has utilised 83% of its programmed expenditure.

**Axis 3** – (Improving the quality of life in rural areas) has utilised more than 53% of its budget.

**Axis 4** – (Leader) has used approximately 35% of its programmed expenditure.

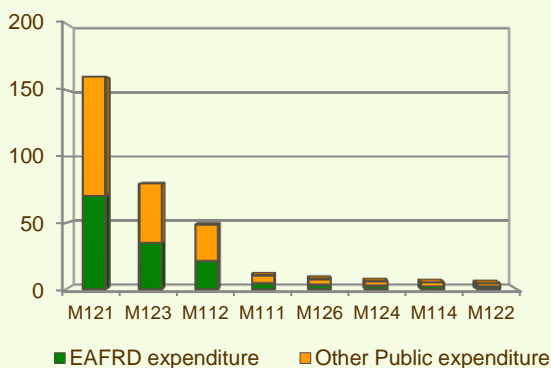


**Figure 1: Total Public Expenditure from 2007 to 2013 in Emilia Romagna & expenditure per Axis**



## Axis 1 - Improving the competitiveness of the agricultural and forestry sector

**Figure 2: Axis 1 - Total Public expenditure per measure in million EURO (2007-2013)**



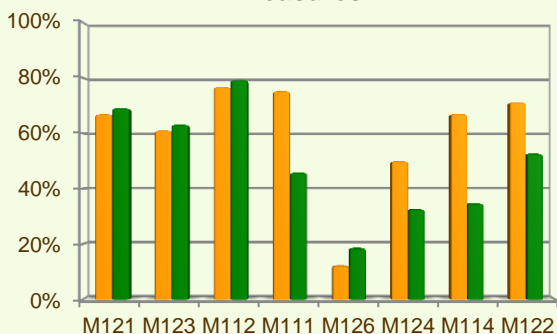
Axis 1 places an emphasis on the Modernisation of agricultural holdings (M121) and Adding value to agricultural and forestry products (M123), allocating to these two measures nearly 66% of the overall budgeted funds for Axis 1.

Analysis of the expenditure rates per measure up to 2013 shows that:

- ❖ The measures on Early retirement (M113) and of Participation of farmers in food quality schemes (M132), have utilised almost 79% of their allocated budgets.
- ❖ The following measures have utilised between 60% and 80% of their allocated budgets:
  - Setting up of young farmers (M112), 77%
  - Vocational training and information actions (M111), 75%
  - Improvement of the economic value of forests (M122), 71%
  - Use of advisory services (M114), 67%.
  - Modernisation of agricultural holdings (M121), 67%
  - Adding value to agricultural and forestry products (M123), 61%
- ❖ Two measures have used 40-50% of their programmed expenditure:
  - Cooperation for development, etc. (M124), 50%
  - Information and promotion activities (M133), 49%
- ❖ Two measures (M125, M126) spent 12% of their budgets up to end of 2013.

Figure 3 indicates the progress of the total public expenditure of the most important measures of Axis 1 against the 2007-2013 budgets, in comparison to the National level.

**Figure 3: Axis 1 – Total public expenditure (2007-2013) against 2007-13 budgets, main measures**



■ Total Public expenditure (%) against 2007-2013 budgets / Regional level  
 ■ Total Public expenditure (%) against 2007-2013 budgets / National level

# EMILIA ROMAGNA - ITALY

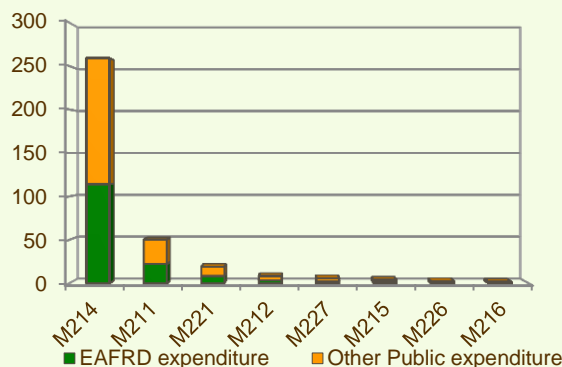
## Axis 2 - Improving the environment and the countryside

Axis 2 focuses on Agri-environment payments (M214) and Natural handicap payments to farmers in mountain areas (M211). The two measures represent the majority of the Axis 2 expenditure (see figure 4). Together they have been allocated 31% of the total public budget programmed in the Emilia Romagna RDP for 2007-2013.

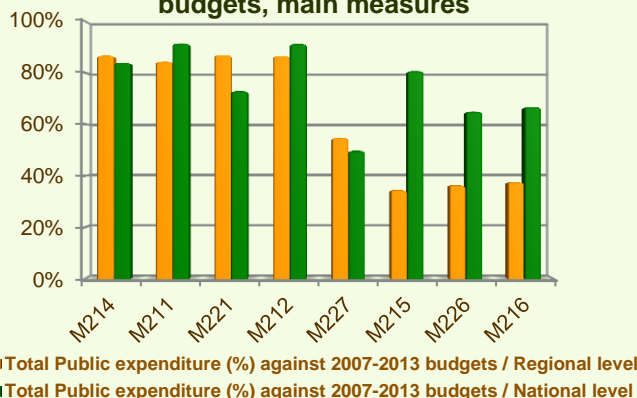
- ❖ Four measures have utilised 80-90% of their allocated budgets, namely:
  - First afforestation of agricultural land (M221), 87%
  - Agri-environment payments (M214), 87%
  - Payments to farmers in areas with handicaps, other than mountain (M212), 87% and
  - Natural handicap payments to farmers in mountain areas (M211), 84%.
- ❖ The measure on Non-productive investments – forestry (M227) has utilised 55% of its allocated budget.
- ❖ Non-productive investments – agriculture (M216) and Restoring forestry potential and introducing prevention actions (M226) have utilised respectively 37% and 36% of their allocated budgets.
- ❖ Animal welfare payments (M215), has spent 34% of its planned budgets up to the end of 2013.

Figure 5 indicates the progress of the total public expenditure of the most important measures of Axis 2 against the 2007-2013 budgets, in comparison to the National level.

**Figure 4: Axis 2 - Total Public expenditure per measure in million EURO (2007-2013)**

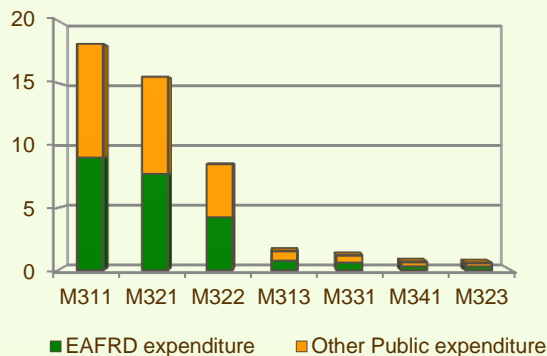


**Figure 5: Axis 2 – Total public expenditure (2007-2013) against 2007-13 budgets, main measures**



## Axis 3 - Quality of life in rural areas and diversification of the rural economy

**Figure 6: Axis 3 - Total Public expenditure per measure in million EURO (2007-2013)**



Axis 3 of the Emilia Romagna RDP focuses on Diversification into non-agricultural activities (M311) and Basic services for the economy and rural population (M321) which together represent 76% of the Axis budget and in absolute terms the largest total public expenditure within the Axis up to 2013 (see figure 6).

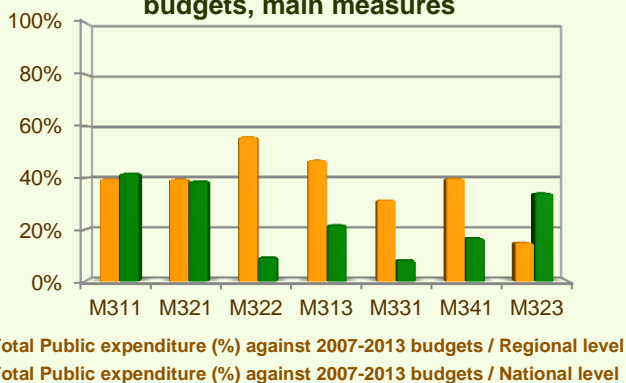
When comparing the expenditure rates per measure up to 2013 it is observed that:

- ❖ Three measures have spent more than 60% of their programmed budget:
  - Skills-acquisition and animation measure with a view to preparing and implementing a local development strategy (M341), 85%
  - Encouragement of tourism activities (M313), 65% and

# EMILIA ROMAGNA - ITALY

## Axis 3 - Quality of life in rural areas and diversification of the rural economy

**Figure 7: Axis 3 – Total public expenditure (2007-2013) against 2007-13 budgets, main measures**



- Village renewal and development (M322), 64%.
- ❖ Three measures have spent between 50% and 60% of their allocated budgets:
  - Training and information (M331), 56%
  - Basic services for the economy and rural population (M321), 51%
  - Diversification into non-agricultural activities (M311), 50%
- ❖ Finally, the measure on Conservation and upgrading of the rural heritage (M323) has spent 41% of its allocated budget.

Figure 7 indicates the progress of the total public expenditure of the most important measures of Axis 3 against the 2007-2013 budgets, in comparison to the National level.

## Axis 4 - Leader

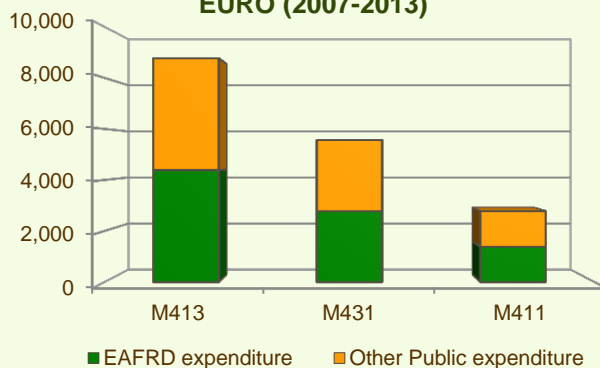
The Leader Axis in the Emilia Romagna RDP has allocated budget of €52 million out of which nearly €18 million have been spent by 2013. Within the Axis, emphasis has been given to the Quality of life/diversification measure (M413) which has been allocated the largest share of funds.

When comparing expenditure per measure up to 2013 it is observed that:

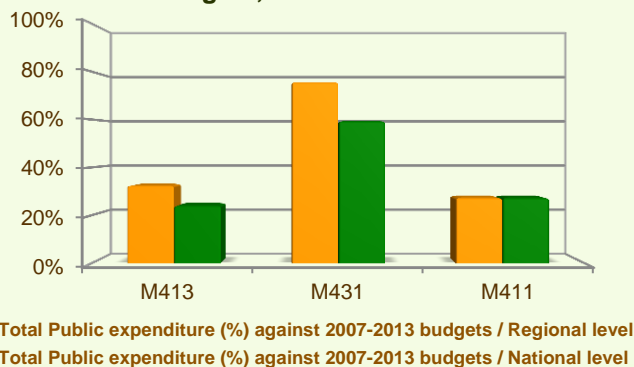
- ❖ Running the LAG, skills acquisition, animation measure (M431) utilised almost 76% of its allocated budget.
- ❖ Quality of life/diversification measure (M413) had the largest total public expenditure in absolute value (see figure 8), which accounts for approximately 32% of its budget.
- ❖ Competitiveness (M411) has utilised 27% of its programmed budget.
- ❖ Environment/land management (M412) has spent 20% of its allocated budget.
- ❖ No expenditure has been recorded up to the end of 2013 for measure on Implementing cooperation projects (M421).

Figure 9 indicates the progress of the total public expenditure of the most important measures of Axis 4 against the 2007-2013 budgets, in comparison to the National level.

**Figure 8: Axis 4 - Total Public expenditure per measure in thousand EURO (2007-2013)**



**Figure 9: Axis 4 – Total public expenditure (2007-2013) against 2007-13 budgets, main measures**



# EMILIA ROMAGNA - ITALY

## Measure 411 project example: Increasing the value of chestnut trees through tourism / Italy - Emilia Romagna

With the EAFRD support a Local Action Group in the Modenese and Reggiano Apennines set up a project allowing the recovery of several hectares of chestnut trees and transforming the space into an attraction for tourists, while recuperating this cultural heritage. Until this project, the chestnut tree culture was going to be lost as the majority of the existing plantations were abandoned or infested by diseases.

Main activities consisted in spreading awareness among the citizens in the nearest urban area regarding chestnut harvest, conservation and consumption, picnic areas for tourists were built and set up with drinking fountains, barbecue facilities and paths. To recuperate the value of ancient tradition environmental education activities were held in schools. The project enhanced direct sale of chestnuts as well.

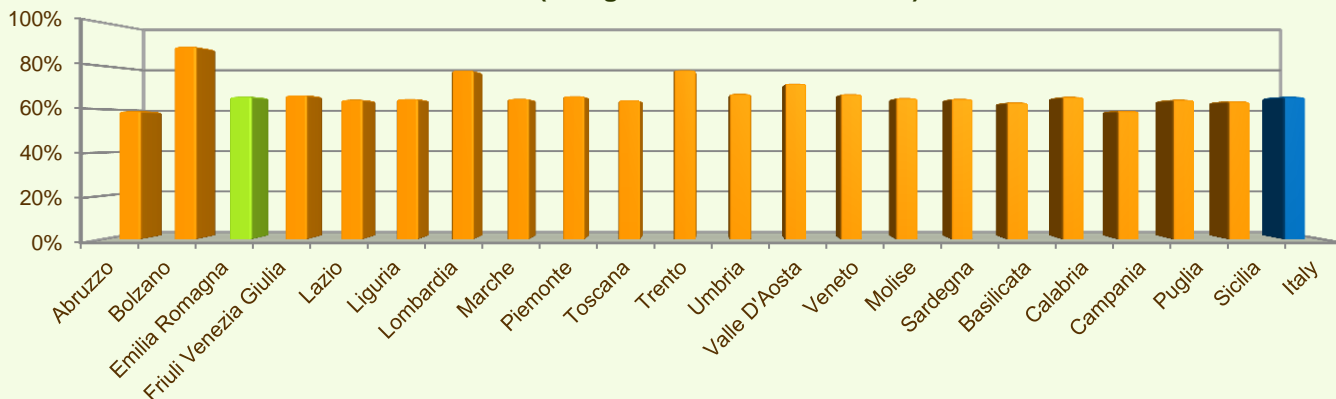
**The total cost** of the project was €100,000, out of which €83,000 was EAFRD contribution and €16,500 private contribution.

**Link:** [http://enrd.ec.europa.eu/policy-in-action/rdp\\_view/en/view\\_projects\\_en.cfm?action=detail&backfuse=jsview&postcard\\_id=6720](http://enrd.ec.europa.eu/policy-in-action/rdp_view/en/view_projects_en.cfm?action=detail&backfuse=jsview&postcard_id=6720)

### Summary

- ✓ Within seven years of implementation, the Emilia Romagna RDP has utilised about 66% (see figure 10) of the total public expenditure planned for the current Programming Period (including post Health Check and the European Economic Recovery Package modifications).
- ✓ Agri-environment payments (M214) is the measure with the highest allocated budget in the Emilia Romagna RDP. Up to 2013, it has utilised 87% of its available budget and represents 34% of the total public expenditure of the programme.
- ✓ Modernisation of agricultural holdings (M121) has the second largest budget in the Emilia Romagna RDP and the utilised expenditure is 67% of its allocated funds. M121 represents 21% of the total public expenditure of the programme.
- ✓ The third largest measure budget is for Adding value to agricultural and forestry products (M123) which has used almost 61% of its programmed total public expenditure and represents 10% of the total public expenditure of the programme.

**Figure 10: Progress of total public expenditure up to 2013 (at regional and national level)**



Source of the data: 1) Programmed expenditures 2007-2013: RDP budget allocation following Health Check revision (December 2013); 2) Expenditures 2007-2013: DG AGRI 3) Output indicators data are available only at National level; therefore at regional level a comparison of financial implementation progress is provided between the regional RDPs.

For further detailed information on financial / physical and output indicators data please refer to the dedicated ENRD website section on Monitoring Indicators.