

GUYANA - FRANCE

Basic Information:

The Guyana Rural Development Programme (RDP) has budgeted for 2007-2013 a total public expenditure of €96 million (European Agricultural Fund for Rural Development and Member State contribution). At the end of 2013, €57 million were spent out of the allocated budget (see figure 1).

Axis 1 – (Improving the competitiveness of the agricultural and forestry sector), has utilised 61% of its allocated budget.

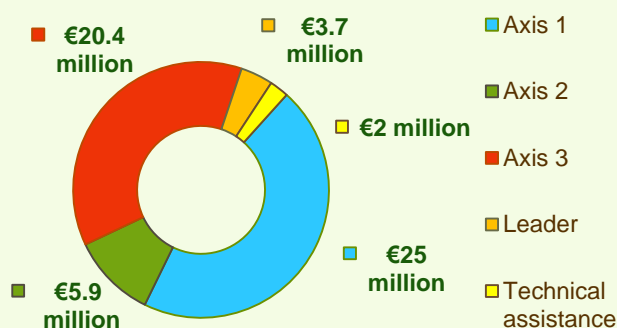
Axis 2 – (Improving the environment and the countryside), has utilised nearly 62% of its programmed expenditure.

Axis 3 – (Improving the quality of life in rural areas), has utilised around 63% of its budget.

Axis 4 – (Leader) has utilised approximately 39% of the programmed expenditure.



Figure 1: Guyana - Total Public Expenditure from 2007 to 2013 & expenditure per Axis



Axis 1 - Improving the competitiveness of the agricultural and forestry sector

Figure 2: Axis 1 - Total Public expenditure per measure in million EURO (2007-2013)

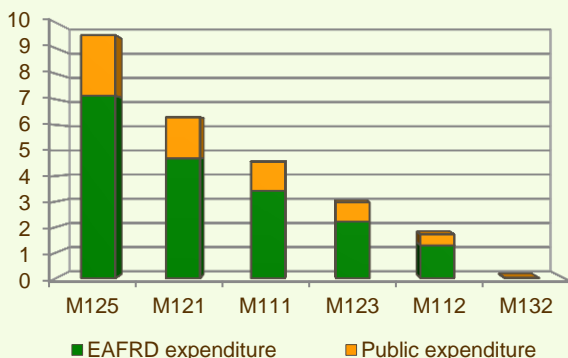
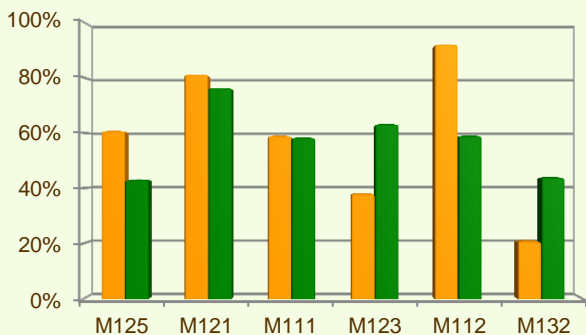


Figure 3: Axis 1 – Total public expenditure (2007-2013) against 2007-13 budgets, main measures



■ Total Public expenditure (%) against 2007-2013 budgets / Regional level
 ■ Total Public expenditure (%) against 2007-2013 budgets / National level

Total programmed public expenditure on Axis 1 places an emphasis on Infrastructure related to the development and adaptation of agriculture and forestry (M125) allocating to this measure 38% of the overall budgeted funds for Axis 1.

Analysis of the expenditure rates per measure up to 2013 shows that:

- ❖ The measure Setting up of young farmers (M112) has utilised 92% of its allocated budget.
- ❖ Modernisation of agricultural holdings (M121) has used 81% of its planned expenditure.
- ❖ Two measures have utilised approximately 60% of their allocated budgets, namely:
 - Infrastructure related to the development and adaptation of agriculture and forestry (M125), and
 - Vocational training and information actions (M111).
- ❖ Two measures have utilised approximately 21-38% of their programmed expenditure:
 - Adding value to agricultural and forestry products (M123), 38% and
 - Participation of farmers in food quality schemes (M132), 21%.

Figure 3 indicates the progress of the total public expenditure of the most important measures of Axis 1 against the 2007-2013 budgets, in comparison to the National level.

GUYANE - FRANCE

Axis 2 - Improving the environment and the countryside

Axis 2 in the Guyana RDP focuses on Non-productive investments - forestry (M227) and Payments to farmers in areas with handicaps, other than mountain areas (M212). These two measures represent the majority of the Axis 2 expenditure from 2007 to 2013 (see figure 4). Together they have been allocated almost 7% of the total public budget programmed in the Guyana RDP for 2007-2013.

- ❖ Payments to farmers in areas with handicaps, other than mountain areas (M212) has spent about 87% of its allocated funds.
- ❖ Non-productive investments – agriculture (M216) has utilised nearly 67% of its programmed budget.
- ❖ Agri-environment payments (M214) has used 52% of its allocated funds.
- ❖ Non-productive investments - forestry (M227) has spent 47% of its allocated budget.
- ❖ Up to 2013, no expenditure has been recorded for First establishment of agroforestry systems on agricultural land (M222).

Figure 5 indicates the progress of the total public expenditure of the most important measures of Axis 2 against the 2007-2013 budgets, in comparison to the National level.

Figure 4: Axis 2 - Total Public expenditure per measure in million EURO (2007-2013)

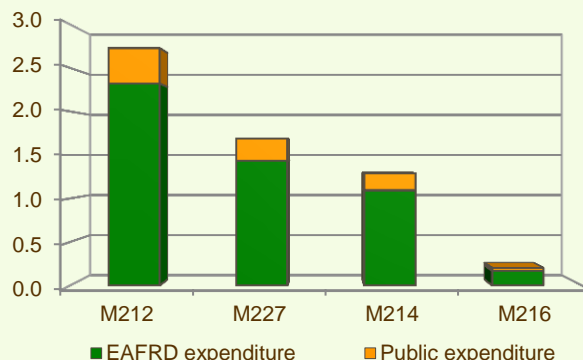
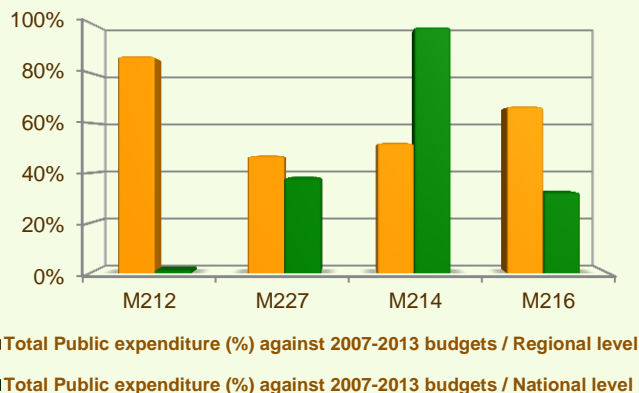
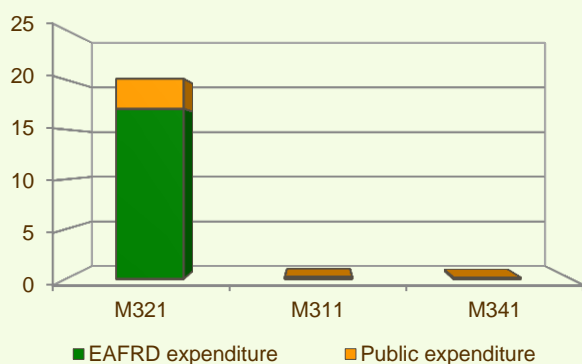


Figure 5: Axis 2 – Total public expenditure (2007-2013) against 2007-13 budgets, main measures



Axis 3 - Quality of life in rural areas and diversification of the rural economy

Figure 6: Axis 3 - Total Public expenditure per measure in million EURO (2007-2013)



The total programmed expenditure on Axis 3 of the Guyana RDP focuses on Basic services for the economy and rural population (M321). This measure represents 98% of the Axis budget and of spent total public expenditure under this Axis from 2007 to 2013 (see figure 6).

When comparing the expenditure rates per measure up to 2013 it is observed that:

- ❖ The measure Basic services for the economy and rural population (M321) has utilised 63% of its programmed allocation.
- ❖ Diversification into non-agricultural activities (M311) has spent 60% of its allocated funds.
- ❖ The measure Skills acquisition and animation measure with a view to preparing and implementing a local development strategy (M341) has utilised almost 59% of its allocated budget.

GUYANE - FRANCE

Axis 3 - Quality of life in rural areas and diversification of the rural economy

Figure 7: Axis 3 – Total public expenditure (2007-2013) against 2007-13 budgets, main measures

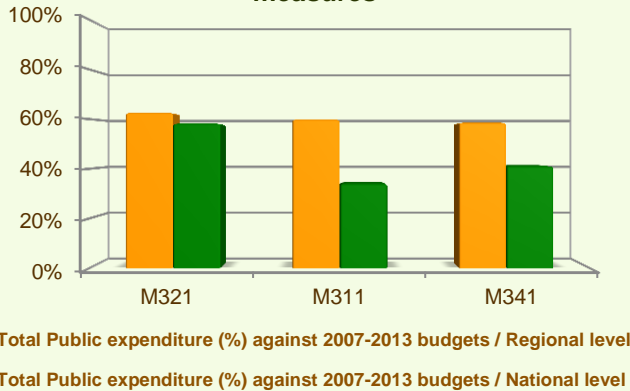


Figure 7 indicates the progress of the total public expenditure of the most important measures of Axis 3 against the 2007-2013 budgets, in comparison to the National level.

Axis 4 - Leader

The Leader Axis in the Guyana RDP has allocated budget of almost €10 million. Within the Axis, emphasis has been given to the Quality of life/diversification (M413) which has been allocated 46% of the total public programmed funds allocated to this axis.

- ❖ The measure Running the LAG, skills acquisition, animation (M431) has utilised nearly 60% of its planned budget (see figure 8).
- ❖ The measure Quality of life/diversification (M413) has spent 41% of its programmed allocation.
- ❖ Competitiveness (M411) has used 21% of its planned expenditure.
- ❖ Implementing cooperation projects (M421), has been allocated 5% of the Axis funds, and spent nearly 24% of its budget.
- ❖ Finally, Environment/land management (M412) has been allocated 0.2% of the Axis funds, and spent all of its budget.

Figure 9 indicates the progress of the total public expenditure of the most important measures of Axis 4 against the 2007-2013 budgets, in comparison to the National level.

Figure 8: Axis 4 - Total Public expenditure per measure in million EURO (2007-2013)

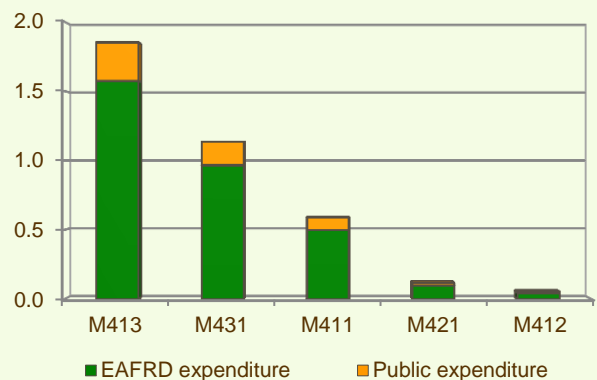
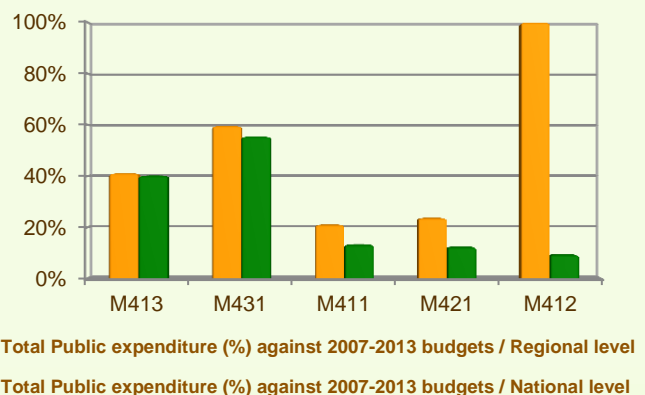


Figure 9: Axis 4 – Total public expenditure (2007-2013) against 2007-13 budgets, main measures

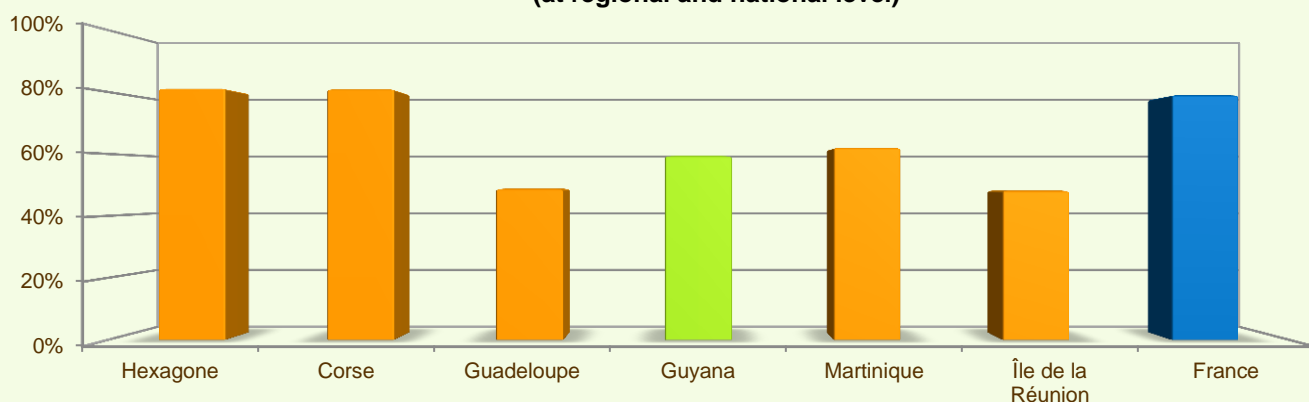


GUYANE - FRANCE

Summary

- ✓ Within seven years of implementation, the Guyana RDP has utilised 59% (see figure 10) of the total public expenditure planned for the current Programming Period (including post Health Check and the European Economic Recovery Package modifications).
- ✓ Basic services for the economy and rural population (M321) is the measure with the highest allocated budget in the Guyana RDP. Up to 2013, it has utilised 63% of its available budget and represents 35% of the total public expenditure of the programme.
- ✓ Infrastructure related to the development and adaptation of agriculture and forestry (M125) has the second largest budget in the Guyana RDP and the utilised expenditure is 61% of its allocated funds. M125 represents 17% of the total public expenditure of the programme.
- ✓ The third largest measure budget is for Adding value to agricultural and forestry products (M123) which has used 38% of its programmed total public expenditure and represents 5% of the total public expenditure of the programme.

Figure 10: Progress of total public expenditure up to 2013 (at regional and national level)



Source of the data:

1) Programmed expenditures 2007-2013: RDP budget allocation following Health Check revision (December 2013)

2) Expenditures 2007-2013: DG AGRI

3) Output indicators data are available only at National level; therefore at regional level a comparison of financial implementation progress is provided between the regional RDPs.



<http://enrd.ec.europa.eu>

For further detailed information on financial / physical and output indicators data please refer to the dedicated ENRD website section on Monitoring Indicators.