

LA RIOJA - SPAIN

Basic Information:

The La Rioja Rural Development Programme (RDP) has budgeted for 2007-2013 a total public expenditure of €200 million (European Agricultural Fund for Rural Development and Member State contribution). At the end of 2013, €161,5 million were spent out of the allocated budget (see Figure 1).

Axis 1 (Improving the competitiveness of the agricultural and forestry sector) has utilised 82% of its allocated budget.

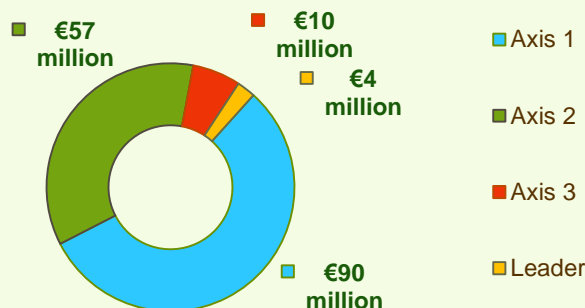
Axis 2 (Improving the environment and the countryside) has utilised 89% of its programmed expenditure.

Axis 3 (Improving the quality of life in rural areas) has utilised 92% of its budget.

Axis 4 (Leader) has utilised 27% of its programmed expenditure.



Figure 1: Total public expenditure per axis in La Rioja (2007-2013)



Axis 1 - Improving the competitiveness of the agricultural and forestry sector

Figure 2: Axis 1 total public expenditure per measure in million EURO (2007-2013)

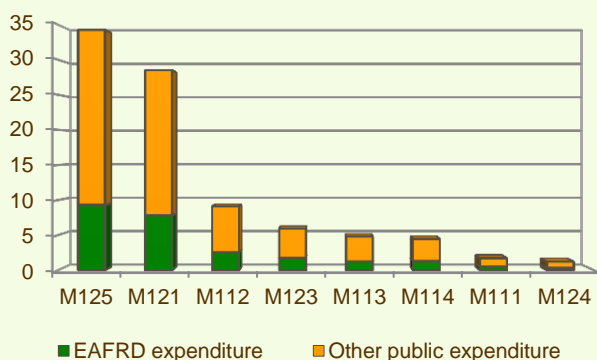
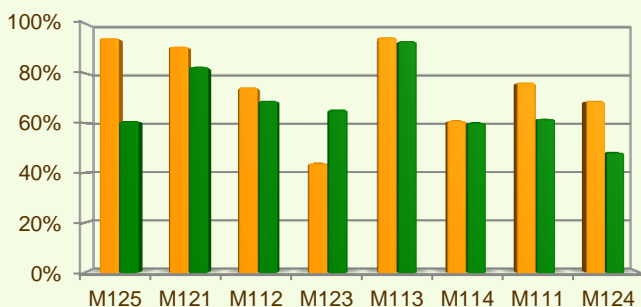


Figure 3: Axis 1 total public expenditure (2007-2013) against 2007-2013 budgets, main measures



■ Total public expenditure (%) against 2007-2013 budgets / Regional level
 ■ Total public expenditure (%) against 2007-2013 budgets / National level

Axis 1 places an emphasis on Infrastructure related to the development and adaptation of agriculture and forestry (M125), allocating to this measure 33%, of the overall budgeted funds for Axis 1.

Analysis of the expenditure rates per measure up to 2013 shows that:

- ❖ Four measures have utilised 90% or more of their programmed expenditure:
 - Improvement of the economic value of forests (M122), 100%
 - Early retirement (M113), 95%
 - Infrastructure related to the development and adaptation of agriculture and forestry (M125), 94% and
 - Modernisation of agricultural holdings (M121), 91%
- ❖ Four measures have utilised 69-75% of their programmed expenditure, namely:
 - Vocational training and information actions (M111), 76%
 - Setting up young farmers (M112), 75%
 - Setting up management, relief and advisory services (M115), 72% and
 - Cooperation for development of new products, etc. (M124), 69%.
- ❖ The measures Use of advisory services (M114) and Adding value to agricultural and forestry products (M123), have utilised each 61% and 44% of their programmed expenditure.

Figure 3 indicates the progress of the total public expenditure of the most important measures of Axis 1 against the 2007-2013 budgets, in comparison to the National level.

LA RIOJA - SPAIN

Axis 2 - Improving the environment and the countryside

Axis 2 focuses on Agri-environment payments (M214). The measure represents a significant part of the Axis 2 utilised expenditure (see Figure 4) and has been allocated 11% of the total programmed budget in the La Rioja RDP for 2007-2013.

- ❖ Four out of the seven measures offered by the Axis, have utilised all of their allocated budgets, namely:
 - First afforestation of non-agricultural land (M223),
 - First afforestation of agricultural land (M221),
 - Restoring forestry potential and introducing prevention actions (M226), and
 - Natural handicap payments to farmers in mountain areas (M211).
- ❖ The remaining three measures have utilised 79-85% of their allocated budgets, namely:
 - Agri-environment payments (M214), 84%
 - Non-productive investments – agriculture (M216), 80% and
 - Non-productive investments – forestry (M227), 79%.

Figure 5 indicates the progress of the total public expenditure of the most important measures of Axis 2 against the 2007-2013 budgets, in comparison to the National level.

Figure 4: Axis 2 total public expenditure per measure in million EURO (2007-2013)

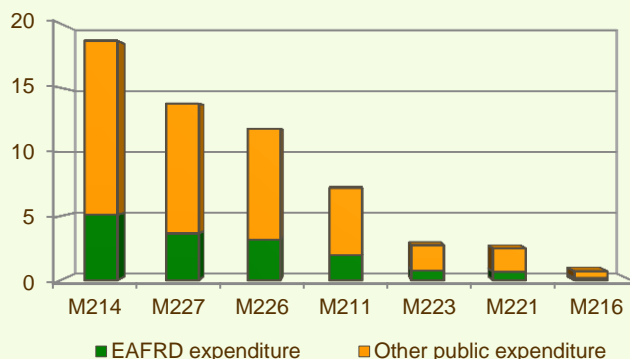
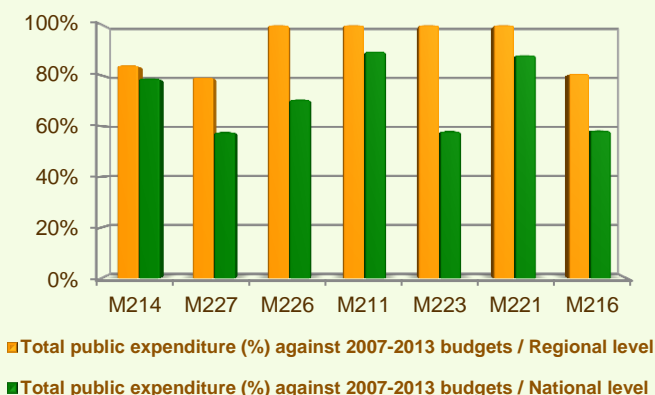
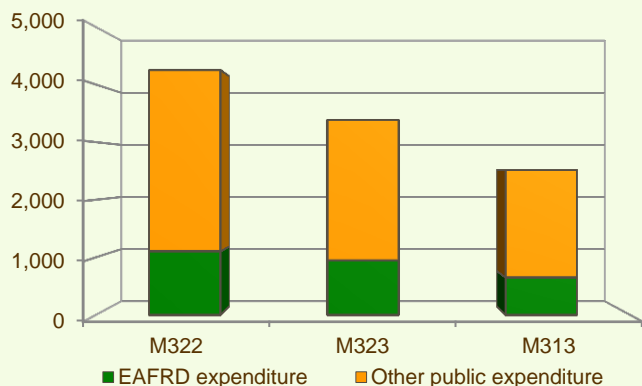


Figure 5: Axis 2 total public expenditure (2007-2013) against 2007-2013 budgets, main measures



Axis 3 - Quality of life in rural areas and diversification of the rural economy

Figure 6: Axis 3 total public expenditure per measure in thousand EURO (2007-2013)



Axis 3 of the La Rioja RDP focuses on Conservation and upgrading of the rural heritage (M323) which represents 41% of the Axis programmed budget and 33% of the total public expenditure under the Axis (see Figure 6).

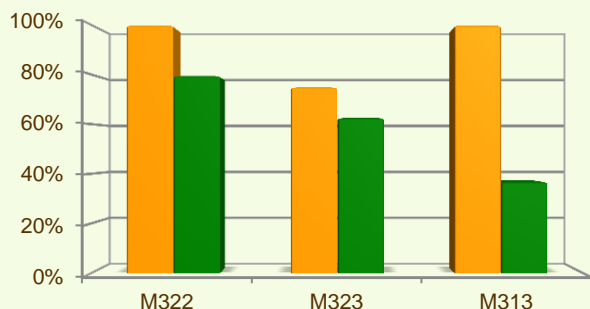
When comparing the expenditure rates per measure up to 2013 it is observed that:

- ❖ Two measures of the Axis have spent all of their programmed budget, namely:
 - Village renewal and development (M322), and
 - Encouragement of tourism activities (M313).

LA RIOJA - SPAIN

Axis 3 - Quality of life in rural areas and diversification of the rural economy

Figure 7: Axis 3 total public expenditure (2007-2013) against 2007-2013 budgets, main measures



■ Total public expenditure (%) against 2007-2013 budgets / Regional level
■ Total public expenditure (%) against 2007-2013 budgets / National level

❖ The measure on Conservation and upgrading of the rural heritage (M323) has utilised 75% of its programmed budget.

Figure 7 indicates the progress of the total public expenditure of the most important measures of Axis 3 against the 2007-2013 targets, in comparison to the National level.

Axis 4 - Leader

The Leader Axis in the La Rioja RDP has allocated budget of €14.5 million, out of which €4 million have been spent by 2013. Within the Axis, emphasis has been given to the Quality of life/diversification (M413) which has been allocated the largest share of funds.

When comparing the expenditure rates per measure up to 2013 it is observed that Quality of life/diversification (M413) had the largest total public expenditure (see Figure 8).

It is also observed that:

- ❖ Running the LAG, skills acquisition, animation (M431) has spent 68% of its available budget.
- ❖ Three measures have utilised 10-25% of their allocated funds, namely:
 - Environment/land management (M412), 23%
 - Quality of life/diversification (413), 22% and
 - Competitiveness (M411), 11%.
- ❖ The measure on Implementing cooperation projects (M421) has not utilised any of its allocated budget.

Figure 9 indicates the progress of the total public expenditure of the most important measures of Axis 4 against the 2007-2013 budgets, in comparison to the National level.

Figure 8: Axis 4 total public expenditure per measure in thousands EURO (2007-2013)

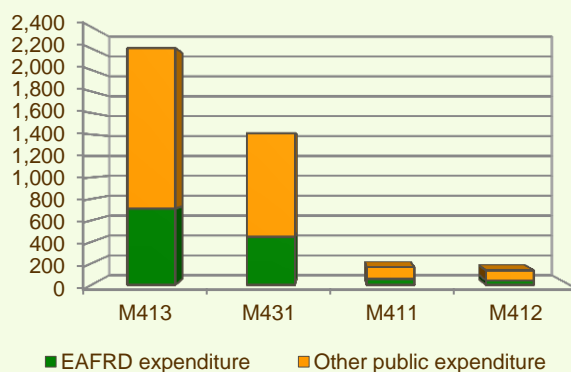
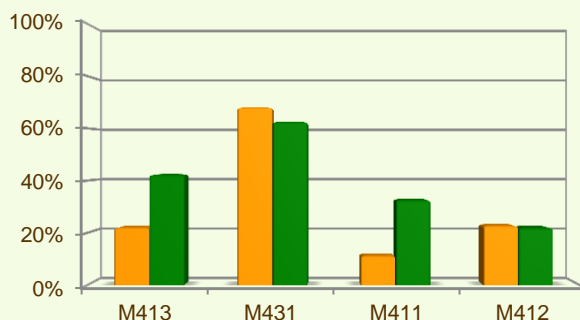


Figure 9: Axis 4 total public expenditure (2007-2013) against 2007-2013 budgets, main measures



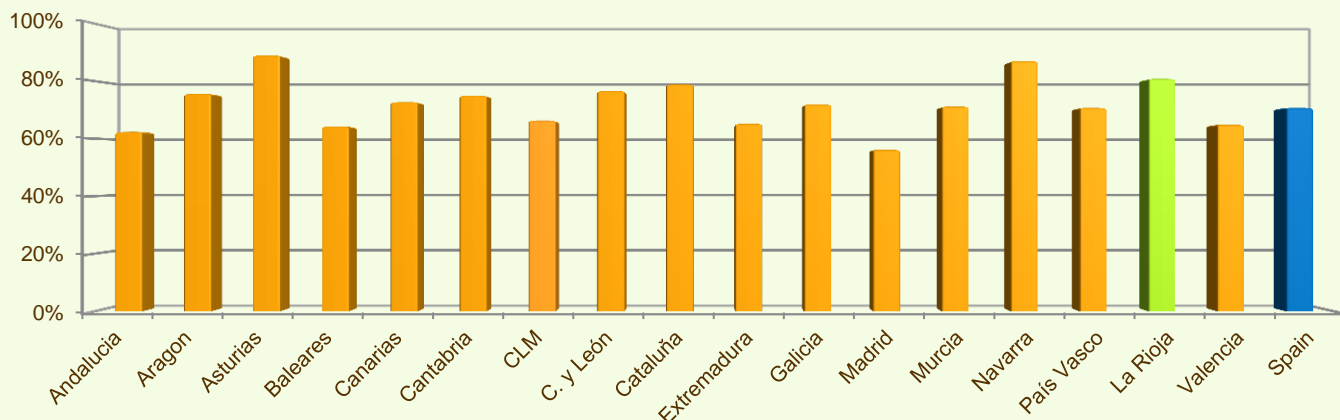
■ Total public expenditure (%) against 2007-2013 budgets / Regional level
■ Total public expenditure (%) against 2007-2013 budgets / National level

LA RIOJA - SPAIN

Summary

- ✓ Within seven years of implementation, the La Rioja RDP has utilised about 81% (see figure 10) of the total public expenditure planned for the current Programming Period (including post Health Check and the European Economic Recovery Package modifications).
- ✓ Infrastructure related to the development and adaptation of agriculture and forestry (M125) is the measure with the highest allocated budget in the La Rioja RDP. Up to 2013, it has utilised 94% of its available budget and represents 21% of the total public expenditure of the programme.
- ✓ Modernisation of agricultural holdings (M121) has the second largest budget in the La Rioja RDP and the utilised expenditure is 91% of its allocated funds. M121 represents 18% of the total public expenditure of the programme.
- ✓ The third largest measure budget is for Agri-environment payments (M214), which has used 84% of its programmed total public expenditure and represents 12% of the total public expenditure of the programme.

Figure 10: Progress of total public expenditure up to 2013 (at regional and national level)



Source of the data:

1) Programmed expenditures 2007-2013: RDP budget allocation following Health Check revision (December 2013)

2) Expenditures 2007-2013: DG AGRI

3) Output indicators data are available only at National level; therefore at regional level a comparison of financial implementation progress is provided between the regional RDPs.



For further detailed information on financial / physical and output indicators data please refer to the dedicated ENRD website section on Monitoring Indicators.