

ANDALUCIA - SPAIN

Basic Information:

The Andalusia Rural Development Programme (RDP) has budgeted for 2007-2013 total public expenditure of €2,8 billion (European Agricultural Fund for Rural Development and Member State contribution). During the period 2007 to 2013 total public expenditure of €1.7 billion has been utilised (see Figure 1).

Axis 1 (Improving the competitiveness of the agricultural and forestry sector) has utilised 51% of its allocated budget.

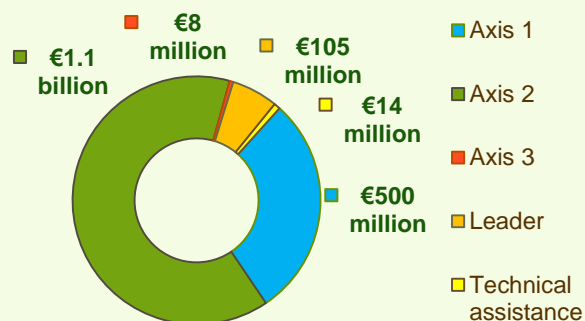
Axis 2 (Improving the environment and the countryside) has utilised 78% of its programmed expenditure.

Axis 3 (Improving the quality of life in rural areas) has utilised 27% of its budget.

Axis 4 (Leader) has utilised approximately 34% of the programmed expenditure.



Figure 1: Total public expenditure per axis in Andalusia (2007-2013)



Axis 1 - Improving the competitiveness of the agricultural and forestry sector

Figure 2: Axis 1 total public expenditure per measure in million EURO (2007-2013)

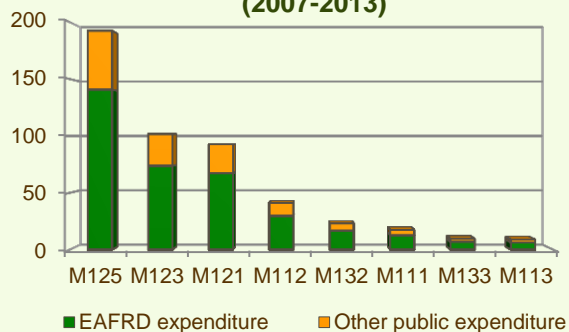
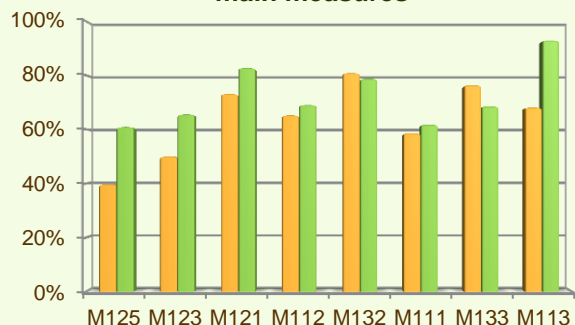


Figure 3: Axis 1 total public expenditure (2007-2013) against 2007-2013 budgets, main measures



■ Total public expenditure (%) against 2007-2013 budgets / Regional level
 ■ Total public expenditure (%) against 2007-2013 budgets / National level

Axis 1 places an emphasis on Infrastructure related to the development and adaptation of agriculture and forestry (M125), allocating to this measure almost 50% of the overall budgeted funds for Axis 1.

Analysis of the expenditure rates per measure up to 2013 shows that:

- ❖ Participation of farmers in food quality schemes (M132) has utilised 81% of its allocated budget.
- ❖ Three measures have utilised 70-80% of their programmed expenditure:
 - Information and promotion activities (M133), 77%
 - Holdings undergoing restructuring (M144), 74%
 - Modernisation of agricultural holdings (M121), 73%
- ❖ Four measures have utilised 60-70% of their programmed expenditure:
 - Early retirement (M113), 68%
 - Use of advisory services (M114), 66%
 - Setting up of young farmers (M112), 65%
 - Improvement of the economic value of forests (M122), 60%
- ❖ Two measures have utilised 50-60% of their programmed expenditure:
 - Vocational training and information actions (M111), 59% and
 - Adding value to agricultural and forestry products (M123), 50%.

Figure 3 indicates the progress of the total public expenditure of the most important measures of Axis 1 against the 2007-2013 budgets, in comparison to the National level.

ANDALUCIA - SPAIN

Measure 123 project example: Better Market Adaptation for Organically Grown Citrus Fruit / Spain – Andalusia

The El-Arbuli company in south Spain was born out of the need of small and medium-sized farmers to cooperate for improving the marketing of the fruit and vegetables they produce to keep their farms profitable. The project supported improvements in the handling, packaging and marketing processes for organic citrus fruit. It upgraded ripening, refrigeration, transport and labelling processes and it encouraged better market adaptation. The farmers involved were committed also to preserving the fragile ecosystem in the region, threatened by agricultural practices hampering biodiversity, pollute the soil and aggravate erosion processes.

The project’s achievement was an increase in the quantity and quality of products by adapting production processes to market demands. It also contributed to improvement of farmers and workers skills and generated new jobs.

The total cost of the project was €256,309, with an EAFRD contribution of €91,142 and €134,786 private contribution.

Link: http://enrd.ec.europa.eu/policy-in-action/rdp_view/en/view_projects_en.cfm?action=detail&backfuse=jsview&postcard_id=8261

Axis 2 - Improving the environment and the countryside

Axis 2 focuses on Agri-environment payments (M214), and on Restoring forestry potential and introducing prevention actions (M226). The two measures represent a significant part of the Axis 2 utilised expenditure (see Figure 4). Together they have been allocated 38% of the total public budget programmed in the Andalusia RDP for 2007-2013.

- ❖ Three measures have utilised 95% or more of their allocated budgets, namely:
 - Payments to farmers in areas with handicaps, other than mountain areas (M212), 100%
 - Natural handicap payments to farmers in mountain areas (M211), 100% and
 - Animal welfare payments, 97%.
- ❖ The measure on Agri-environment payments (M214) has utilised 89% of its programmed budget.
- ❖ Three measures have utilised 65-75% of their programmed budgets, namely:
 - First afforestation of agricultural land (M221), 73%,
 - Non-productive investments – agriculture (M216), 69% and
 - Restoring forestry potential and introducing prevention actions (M226), 66%.

Figure 4: Axis 2 total public expenditure per measure in million EURO (2007-2013)

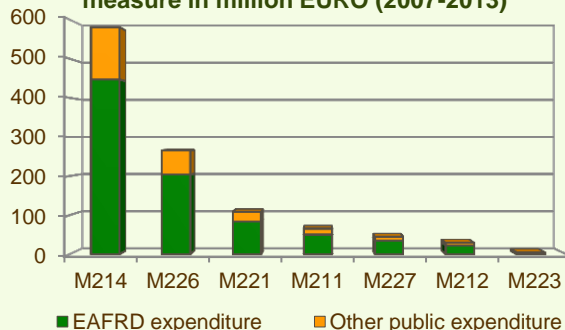
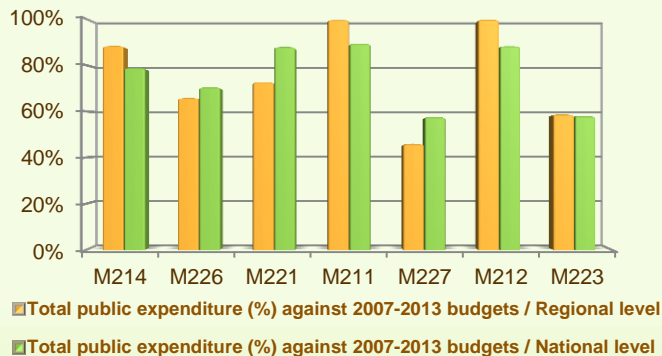


Figure 5: Axis 2 total public expenditure (2007-2013) against 2007-2013 budgets, main measures



ANDALUCIA - SPAIN

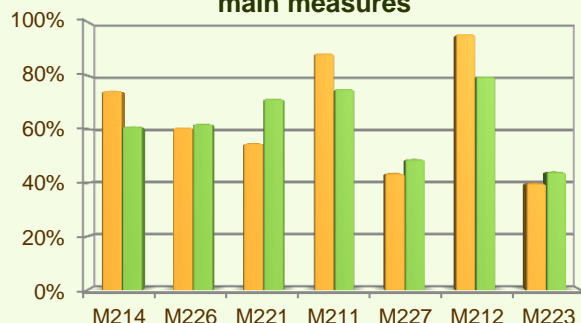
Axis 2 - Improving the environment and the countryside

❖ Two measures have utilised 45-60% of their programmed budgets, namely:

- First afforestation of non-agricultural land (M223), 59%, and
- Non-productive investments – forestry (M227), 46%.

Figure 5 indicates the progress of the total public expenditure of the most important measures of Axis 2 against the 2007-2013 budgets, in comparison to the National level.

Figure 5: Axis 2 total public expenditure (2007-2012) against 2007-2013 budgets, main measures



■ Total public expenditure (%) against 2007-2013 budgets / Regional level
■ Total public expenditure (%) against 2007-2013 budgets / National level

Axis 3 - Quality of life in rural areas and diversification of the rural economy

Figure 6: Axis 3 total public expenditure per measure in million EURO (2007-2013)

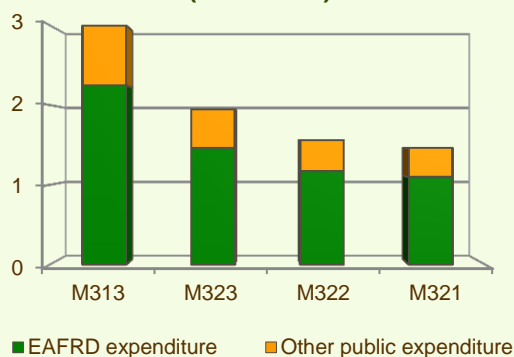
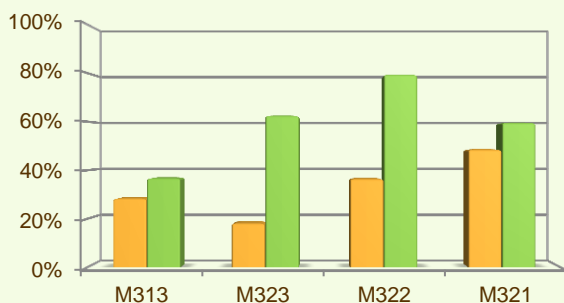


Figure 7: Axis 3 total public expenditure (2007-2013) against 2007-2013 budgets, main measures



■ Total public expenditure (%) against 2007-2013 budgets / Regional level
■ Total public expenditure (%) against 2007-2013 budgets / National level

Axis 3 of the Andalusia RDP focuses on Conservation and upgrading of the rural heritage (M323) which represents 35% of the Axis budget and 23% of the axis total public expenditure (see Figure 6).

When comparing the expenditure rates per measure up to 2013 it is observed that:

- ❖ The measure Basic services for the economy and rural population (M321) has utilised 49% of its programmed budget.
- ❖ Two measures of the Axis have utilised 25-40% of their programmed budgets, namely:
 - Village renewal and development (M322), 37%, and
 - Encouragement of tourism activities (M313), 29%
- ❖ Three measures have spent 10-20% of their allocated budget up to the end of 2013, namely:
 - Support for business creation and development (M312), 19%
 - Conservation and upgrading of the rural heritage (M323), 18%, and
 - Training and Information (M331), 11%.

Figure 7 indicates the progress of the total public expenditure of the most important measures of Axis 3 against the 2007-2013 budgets, in comparison to the National level.

ANDALUCIA - SPAIN

Axis 4 - Leader

Figure 8: Axis 4 total public expenditure per measure in million EURO (2007-2013)

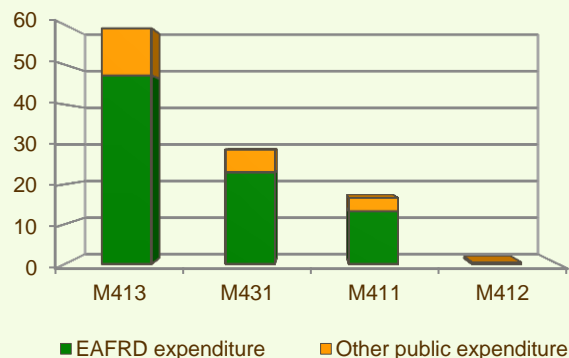
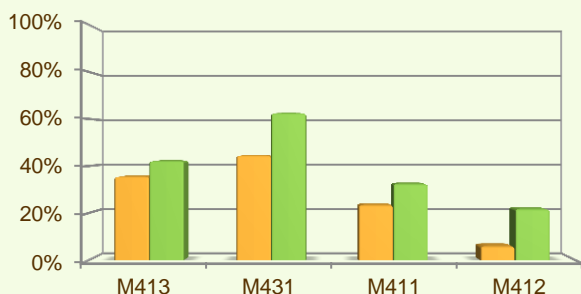


Figure 9: Axis 4 total public expenditure (2007-2013) against 2007-2013 budgets, main measures



■ Total public expenditure (%) against 2007-2013 budgets / Regional level

■ Total public expenditure (%) against 2007-2013 budgets / National level

The Leader Axis in the Andalucía RDP has allocated budget of €310 million, out of which €105 million have been spent by 2013. Within the Axis, emphasis has been given to the Quality of life/diversification (M413) which has been allocated the largest share of funds.

When comparing the public expenditure per measure up to 2013 it is observed that Quality of life/diversification (M413) had the largest total public expenditure and has utilised 36% of its allocated budget (see Figure 8).

It is also observed that:

- ❖ The measure on Running the LAG, skills acquisition, animation (M431) has utilised 45% of its programmed budget.
- ❖ Competitiveness (M411) has utilised around 24% of its allocated funds.
- ❖ Environment/land management (M412) has spent 6% of its allocated funds up to the end of 2013.
- ❖ Up to 2013, no expenditure has been recorded for Implementing cooperation projects (M421).

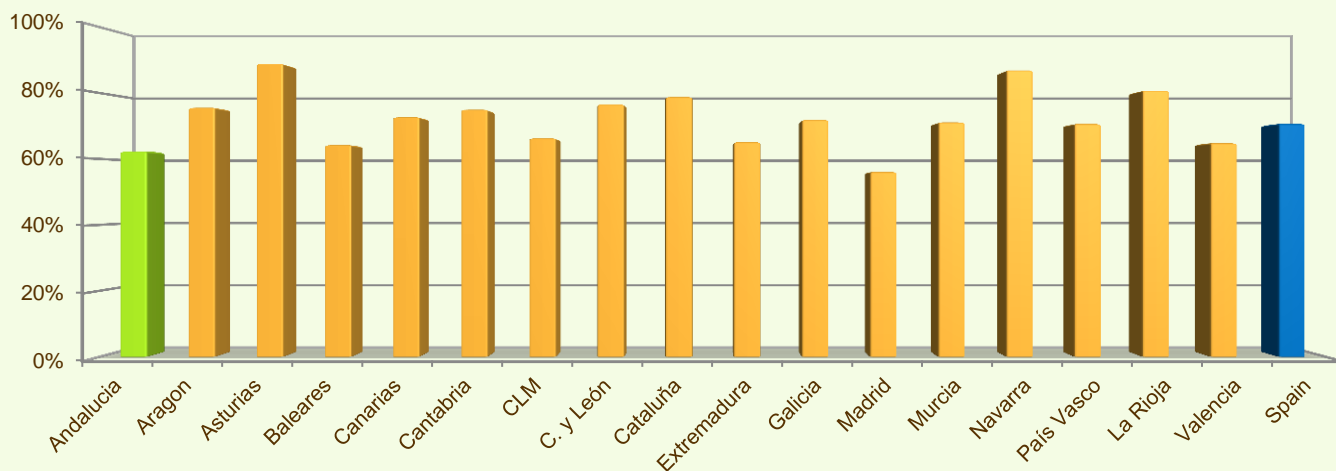
Figure 9 indicates the progress of the total public expenditure of the most important measures of Axis 4 against the 2007-2013 budgets, in comparison to the National level.

Summary

- ✓ Within seven years of implementation, the Andalucía RDP has utilised 62% (see Figure 10) of the total public expenditure planned for the current Programming Period (including post Health Check and the European Economic Recovery Package modifications).
- ✓ Agri-environment payments (M214) is the measure with the highest allocated budget in the Andalucía RDP. Up to 2013, it has utilised 89% of its available budget and represents 34% of the total public expenditure of the programme.
- ✓ Infrastructure related to the development and adaptation of agriculture and forestry (M125) has the second largest budget in the Andalucía RDP and the utilised expenditure is 40% of its allocated funds. M125 represents 11% of the total public expenditure of the programme.
- ✓ The third largest measure budget is for Restoring forestry potential and introducing prevention actions (M226) which has used almost 66% of its programmed total public expenditure and represents 15% of the total public expenditure of the programme.

ANDALUCIA - SPAIN

**Figure 10: Progress of total public expenditure up to 2013
(at regional and national level)**



Source of the data:

1) Programmed expenditures 2007-2013: RDP budget allocation following Health Check revision (December 2013)

2) Expenditures 2007-2013: DG AGRI

3) Output indicators data are available only at National level; therefore at regional level a comparison of financial implementation progress is provided between the regional RDPs.

For further detailed information on financial / physical and output indicators data please refer to the dedicated ENRD website section on Monitoring Indicators.



<http://enrd.ec.europa.eu>