

# NIEDERSACHSEN & BREMEN - GERMANY

## Basic Information:

In total the Niedersachsen and Bremen Rural Development Programme (RDP) has budgeted for 2007-2013 a total public expenditure of €1.6 billion (European Agricultural Fund for Rural Development and Member State contribution). At the end of 2013, €1.28 billion were spent out of the allocated budget (see figure 1).

**Axis 1** – (Improving the competitiveness of the agricultural and forestry sector), has utilised 82% of its allocated budget.

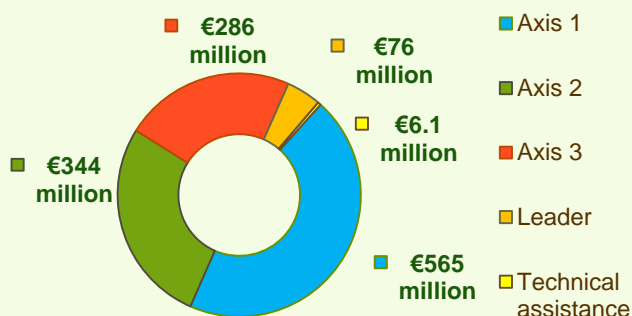
**Axis 2** – (Improving the environment and the countryside), has utilised 76% of its programmed expenditure.

**Axis 3** – (Improving the quality of life in rural areas), has utilised nearly 76% of its budget.

**Axis 4** – (Leader) has utilised around 74% of its programmed expenditure.

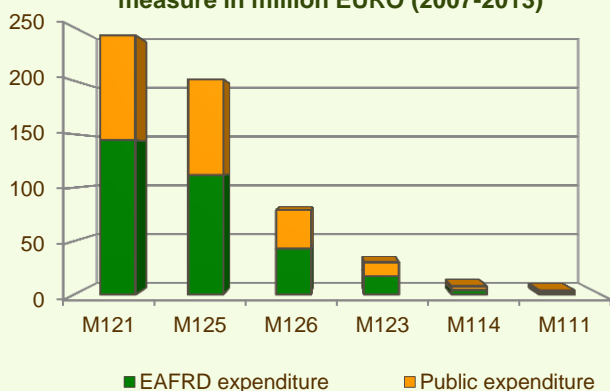


**Figure 1: Total Public Expenditure from 2007 to 2013 in Niedersachsen and Bremen & expenditure per Axis**

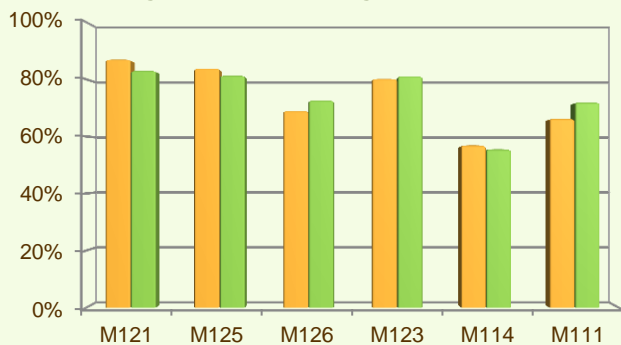


## Axis 1 - Improving the competitiveness of the agricultural and forestry sector

**Figure 2: Axis 1 - Total Public expenditure per measure in million EURO (2007-2013)**



**Figure 3: Axis 1 – Total public expenditure (2007-2013) against 2007-13 budgets, main measures**



■ Total Public expenditure (%) against 2007-2013 budgets / Regional level

■ Total Public expenditure (%) against 2007-2013 budgets / National level

The sum of programmed total public expenditure on Axis 1 places an emphasis on Modernisation of agricultural holdings (M121) and Infrastructure related to the development and adaptation of agriculture (M125), allocating to these two measures over 75% of the overall budgeted funds for Axis 1.

Analysis of the expenditure rates per measure up to 2013 shows that:

- ❖ Three measures have utilised 80-87% of their allocated expenditure, namely:
  - Modernisation of agricultural holdings (M121), 87%
  - Infrastructure related to the development and adaptation of agriculture (M125), 84% and
  - Adding value to agricultural and forestry products (M123), 80%.
- ❖ Two measures have utilised respectively 66% and 69% of their planned budgets:
  - Vocational training and information actions (M111), 66%
  - Restoring agricultural production potential (M126), 69%.
- ❖ Use of advisory services (M114) has spent 57% of its allocated funds.

Figure 3 indicates the progress of the total public expenditure of the most important measures of Axis 1 against the 2007-2013 budgets, in comparison to the National level.

# NIEDERSACHSEN & BREMEN - GERMANY

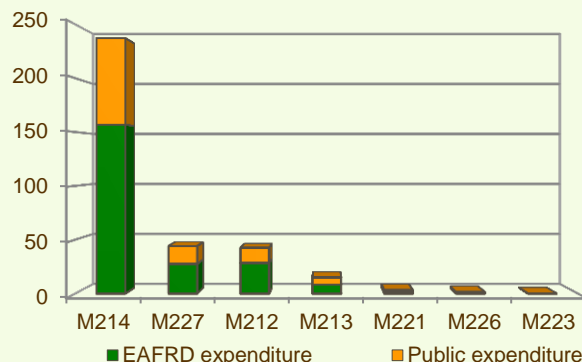
## Axis 2 - Improving the environment and the countryside

The sum of programmed total public expenditure on Axis 2 focuses on Agri-environment payments (M214). The measure represents the majority of the Axis 2 utilised expenditure (see figure 4) and has been allocated 20% of the total public budget programmed in the Niedersachsen and Bremen RDP for 2007-2013.

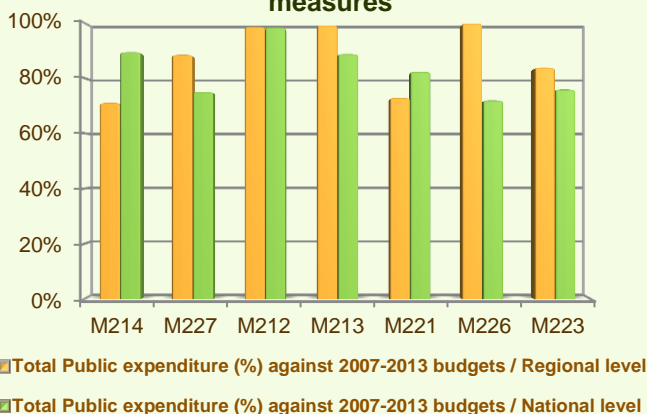
- ❖ The Restoring forestry potential and introducing prevention actions (M226) used its entire programmed budget, followed by Natura 2000 payments and payments linked to Directive 2000/60/EC (M213) and Payments to farmers in areas with handicaps, other than mountain areas (M212) that spent respectively 99% and 98% of their programmed expenditure.
- ❖ First afforestation of non-agricultural land (M223) and Non-productive investments – forestry (M227) have used each 84% and 89% of their budgets.
- ❖ First afforestation of agricultural land (M221) and Agri-environment payments (M214) have spent 73% and 71% of their planned allocation.
- ❖ Minimal expenditure has been utilised up to the end 2013 for measures 216, and 225.

Figure 5 provides an indication of the progress of the total public expenditure of the most important measures of Axis 2 against the 2007-2013 budgets, in comparison to the National level.

**Figure 4: Axis 2 - Total Public expenditure per measure in million EURO (2007-2013)**

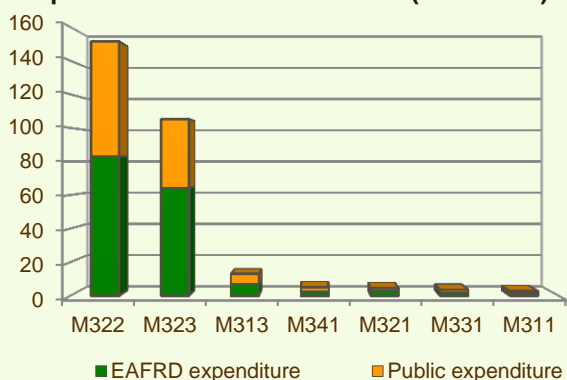


**Figure 5: Axis 2 – Total public expenditure (2007-2013) against 2007-13 budgets, main measures**



## Axis 3 - Quality of life in rural areas and diversification of the rural economy

**Figure 6: Axis 3 - Total Public expenditure per measure in million EURO (2007-2013)**



The sum of programmed total public expenditure on Axis 3 of the Niedersachsen and Bremen RDP focuses on Village renewal and development (M322) and Conservation and upgrading of the rural heritage (M323), which together represent 87% of the Axis budget.

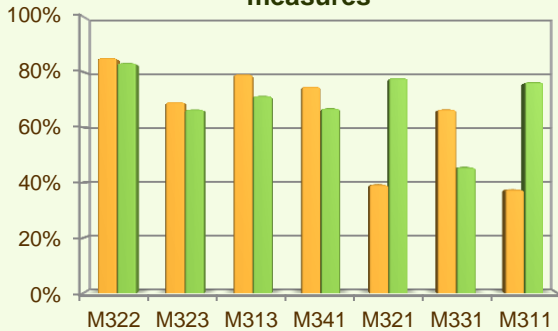
When comparing the expenditure rates per measure up to 2013 it is observed that:

- ❖ Village renewal and development (M322) has utilised 85% of its allocated funds.
- ❖ Four measures have spent 67-79% of their budgets:
  - Encouragement of tourism activities (M313), 79%
  - Skills acquisition and animation (M341), 75%
  - Conservation and upgrading of the rural heritage (M323), 69%
  - Training and information (M331), 67%.

# NIEDERSACHSEN & BREMEN - GERMANY

## Axis 3 - Quality of life in rural areas and diversification of the rural economy

**Figure 7: Axis 3 – Total public expenditure (2007-2013) against 2007-13 budgets, main measures**



■ Total Public expenditure (%) against 2007-2013 budgets / Regional level

■ Total Public expenditure (%) against 2007-2013 budgets / National level

- ❖ Basic services for the economy and rural population (M321) has used 39% of its planned allocation.
- ❖ Diversification into non-agricultural activities (M311) has spent nearly 38% of its allocated budget.

Figure 7 provides an indication of the progress of the total public expenditure of the most important measures of Axis 3 against the 2007-2013 budgets, in comparison to the National level.

## Axis 4 - Leader

The Leader Axis in the Niedersachsen and Bremen RDP has allocated budget of approximately €103 million, out of which €76 million has been spent by 2013. Within the Axis, emphasis has been given to Quality of life/diversification (M413) which has been allocated the largest share of funds.

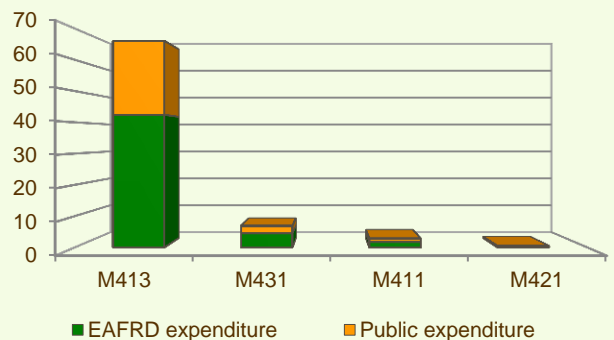
When comparing public expenditure per measure up to 2013 (figure 8), it is observed that Quality of life/diversification (M413) had the largest utilised public expenditure and has spent all of its planned budget.

It is also observed that:

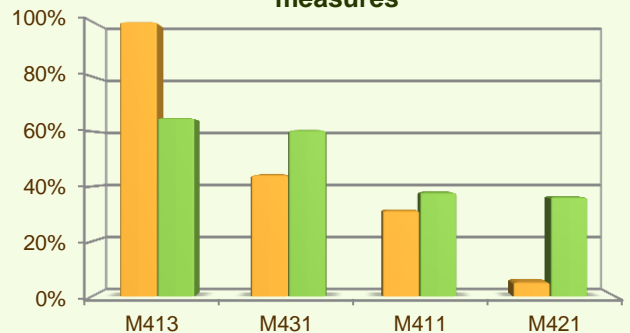
- ❖ Running the LAG, skills acquisition, animation (M431) has utilised 44% of their planned expenditure.
- ❖ Competitiveness (M411) has used 31% of its budget.
- ❖ Up to the end of 2013, minimal or no expenditure has been utilised for Implementing cooperation projects (M421) and Environment/land management (M412).

Figure 9 provides an indication of the progress of the total public expenditure of the most important measures of Axis 4 against the 2007-2013 budgets, in comparison to the National level.

**Figure 8: Axis 4 - Total Public expenditure per measure in million EURO (2007-2013)**



**Figure 9: Axis 4 – Total public expenditure (2007-2013) against 2007-13 budgets, main measures**



■ Total Public expenditure (%) against 2007-2013 budgets / Regional level

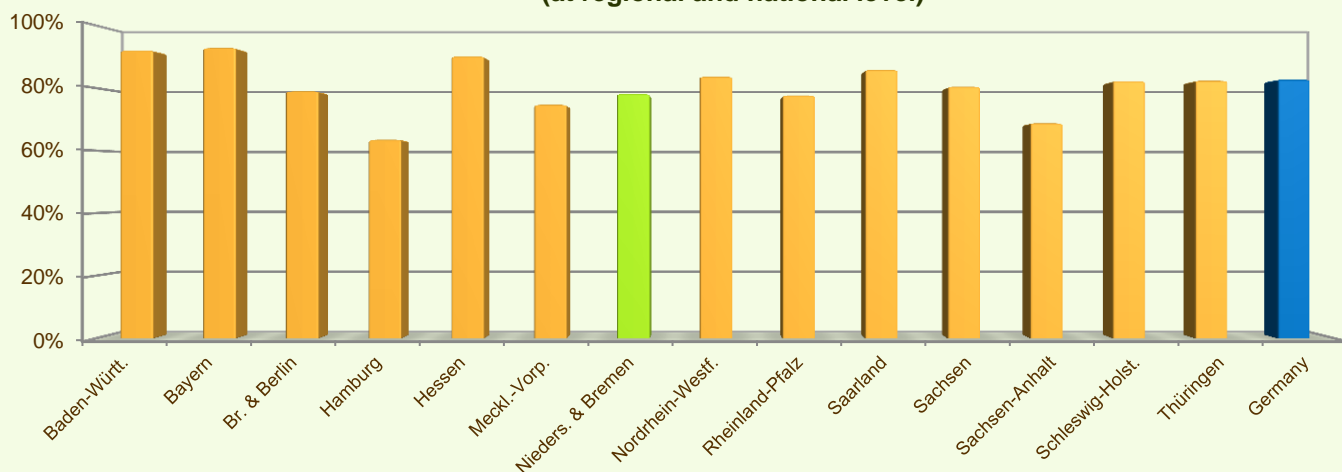
■ Total Public expenditure (%) against 2007-2013 budgets / National level

# NIEDERSACHSEN & BREMEN - GERMANY

## Summary

- ✓ Within seven years of implementation, the Niedersachsen and Bremen RDP has utilised 78% (see figure 10) of the total public expenditure planned for the current Programming Period (including post Health Check and the European Economic Recovery Package modifications).
- ✓ Agri-environment payments (M214) is the measure with the highest allocated budget in the Niedersachsen and Bremen RDP. Up to 2013, it has utilised 71% of its available budget and represents 19% of the total public expenditure of the programme.
- ✓ Modernisation of agricultural holdings (M121) has the second largest budget in the Niedersachsen and Bremen RDP and the utilised expenditure is 87% of its allocated funds. M121 represents 19% of the total public expenditure of the programme.
- ✓ The third largest measure budget is for Infrastructure related to the development and adaptation of agriculture and forestry (M125) which has used 84% of its programmed total public expenditure and represents 16% of the total public expenditure of the programme.

**Figure 10: Progress of total public expenditure up to 2013 (at regional and national level)**



**Source of the data:**

1) Programmed expenditures 2007-2013: RDP budget allocation following Health Check revision (December 2013)

2) Expenditures 2007-2013: DG AGRI

3) Output indicators data are available only at National level; therefore at regional level a comparison of financial implementation progress is provided between the regional RDPs.

For further detailed information on financial / physical and output indicators data please refer to the dedicated ENRD website section on Monitoring Indicators.



<http://enrd.ec.europa.eu>