



European Network for
Rural Development

NRN 'State of Play': Starting-up the Network Support Units

Inés Jordana

2nd NRN meeting

Jurmala, 12 May 2015



#NRNmeeting




2015 mapping exercise: NRN 'State of play'

Response rate:

- Survey sent to 32 Network Support Units (NSUs)
- ✓ Answers for 30 NSUs (94%)

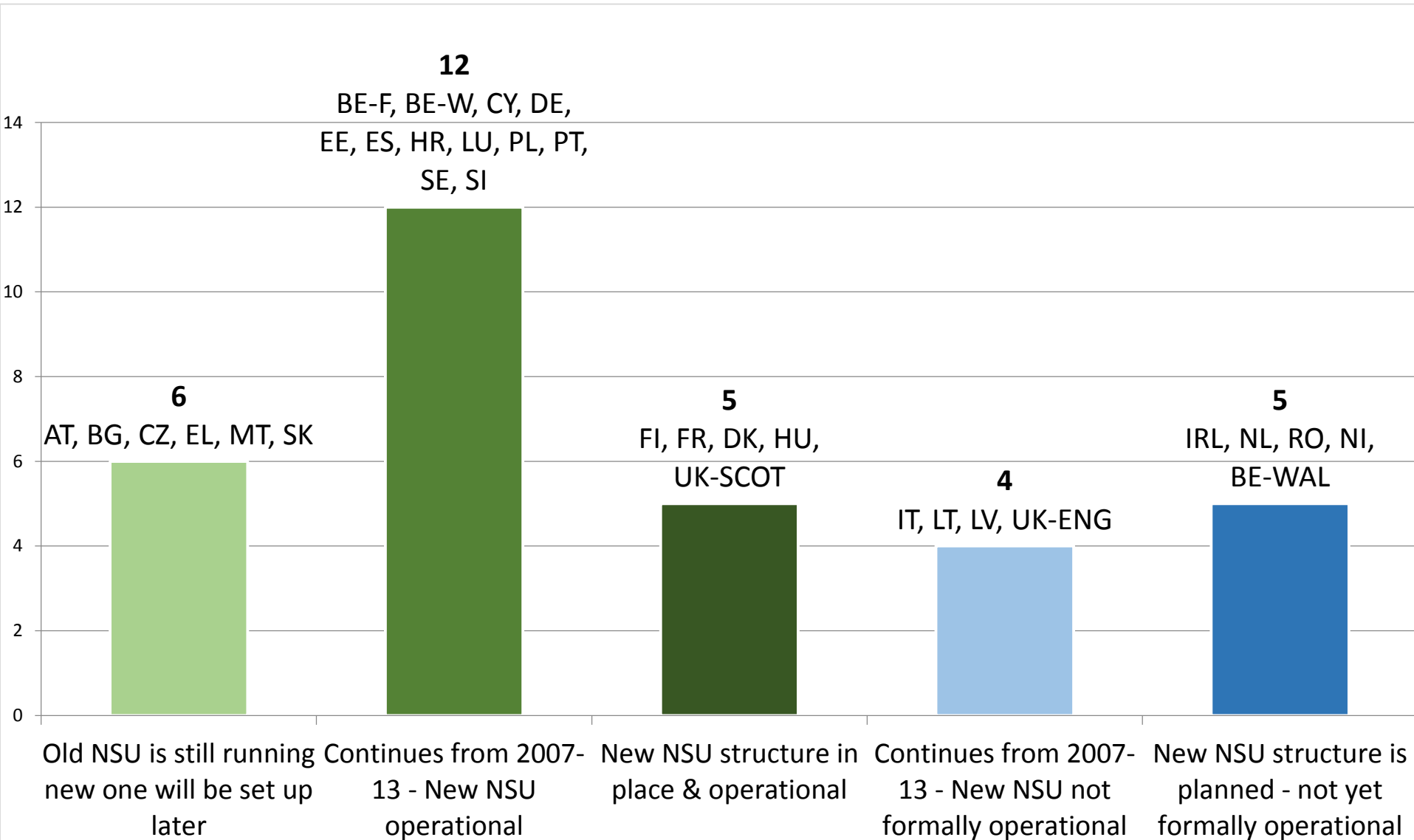
Focus of the Survey:

- Setting-up of the NSUs
 - Membership of the NRNs
 - Engagement of the NRN with various stakeholder groups
- 

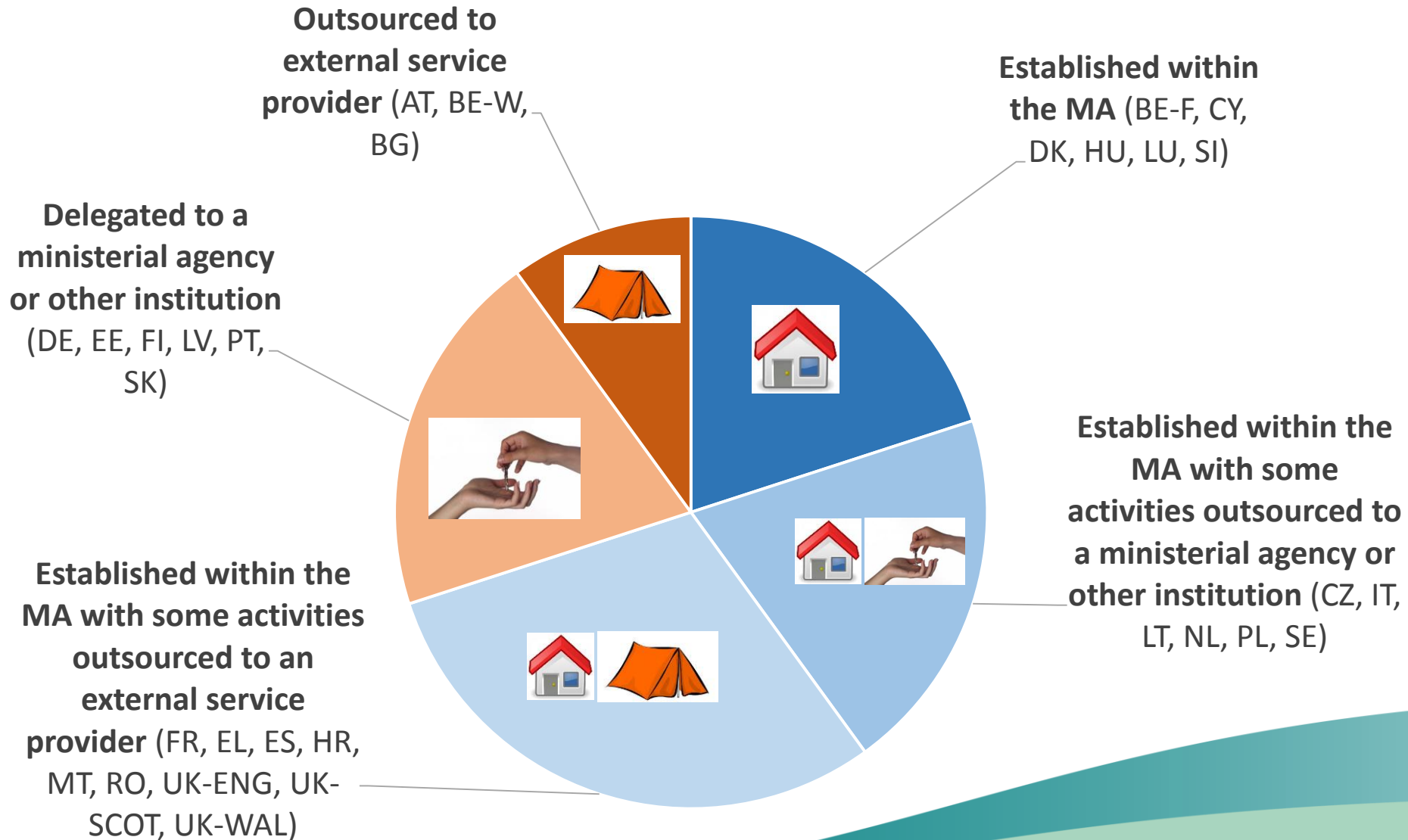
Setting-up the NSU



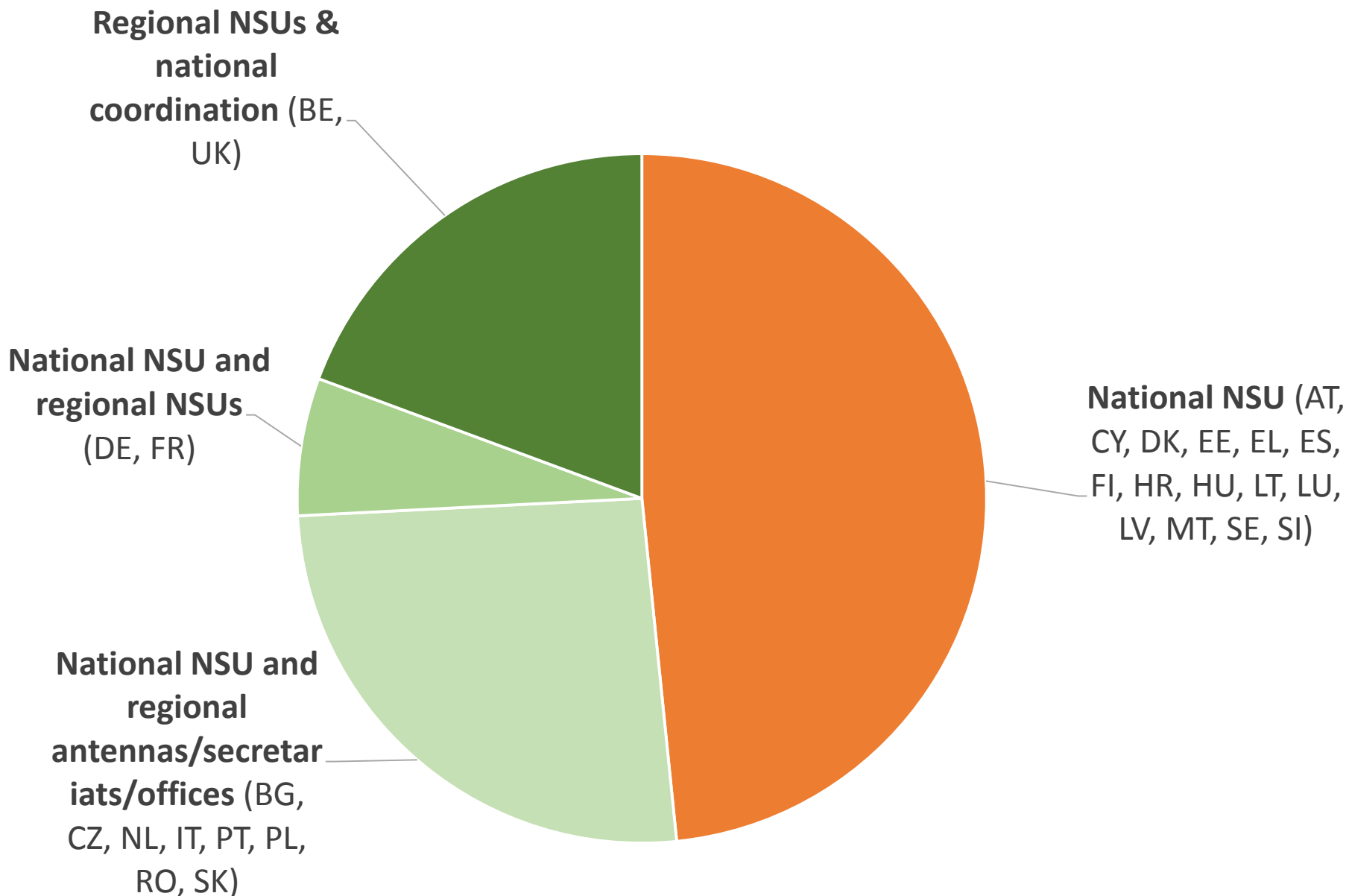
Setting-up the NSU: how and when



In which form the NSU will be set-up?



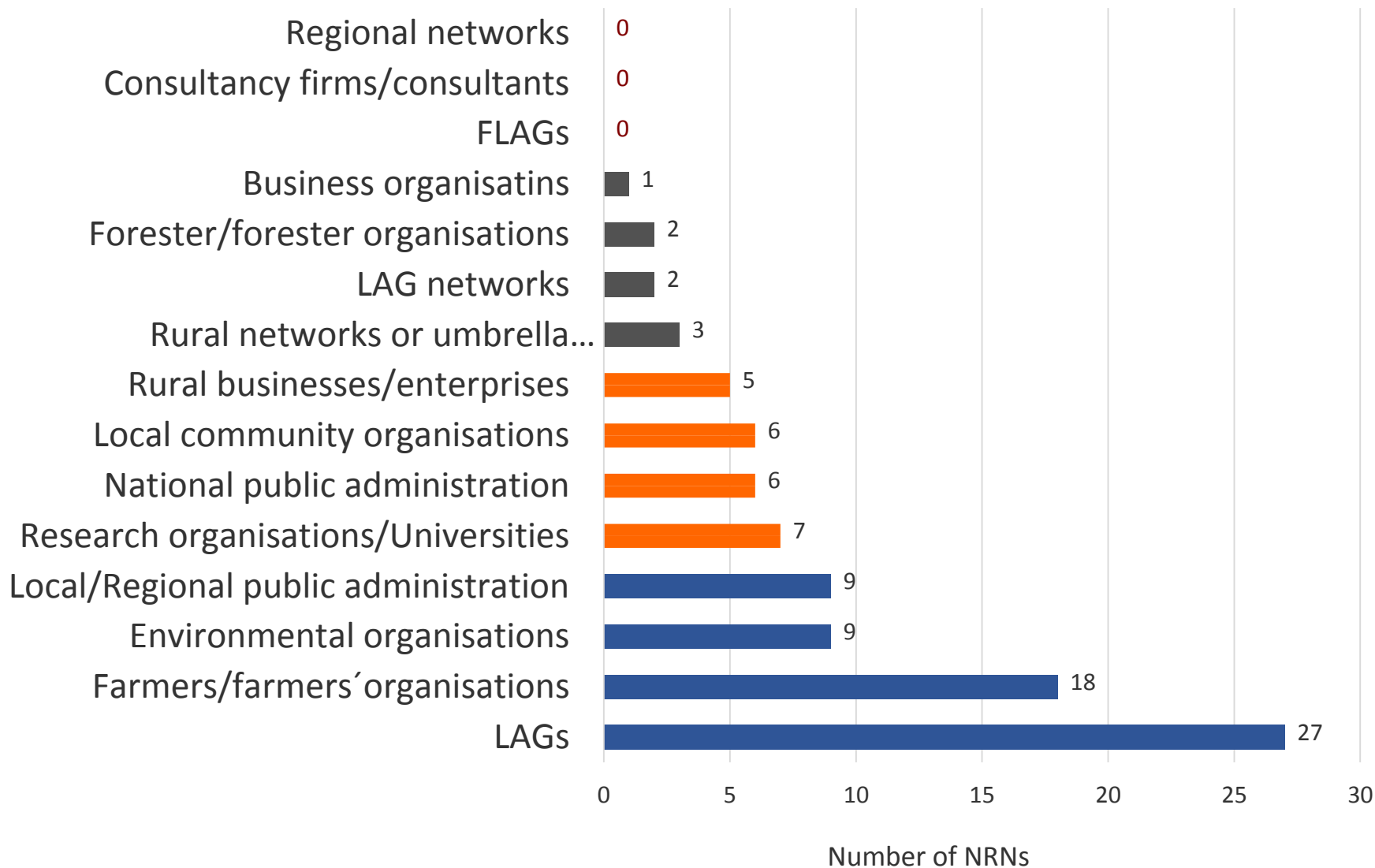
National & regional network structures



Engagement of the NRN with stakeholder groups



Stakeholder groups with which NRNs (will) engage the most with



Who are the drivers?



Where to?



Thanks for your attention