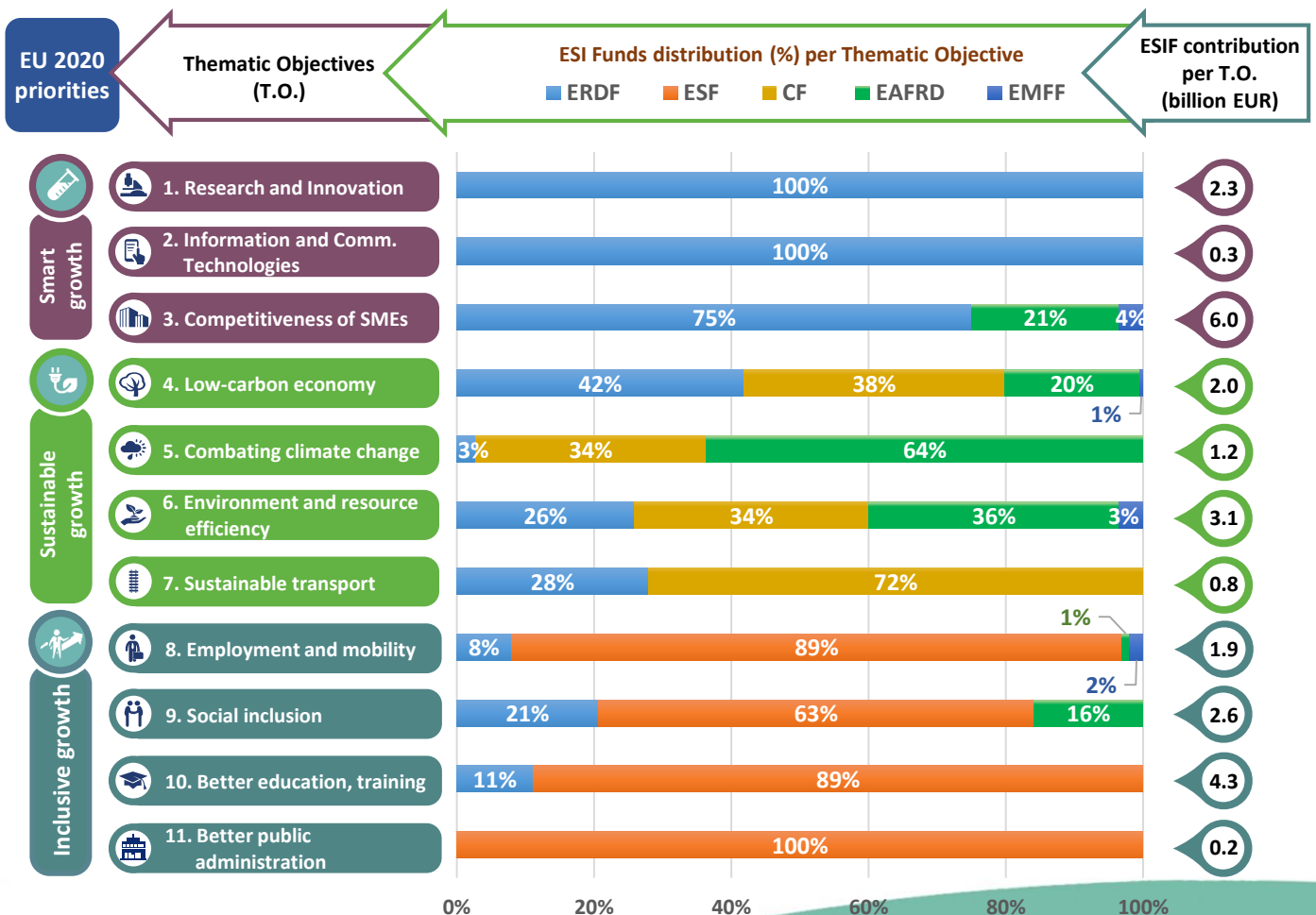
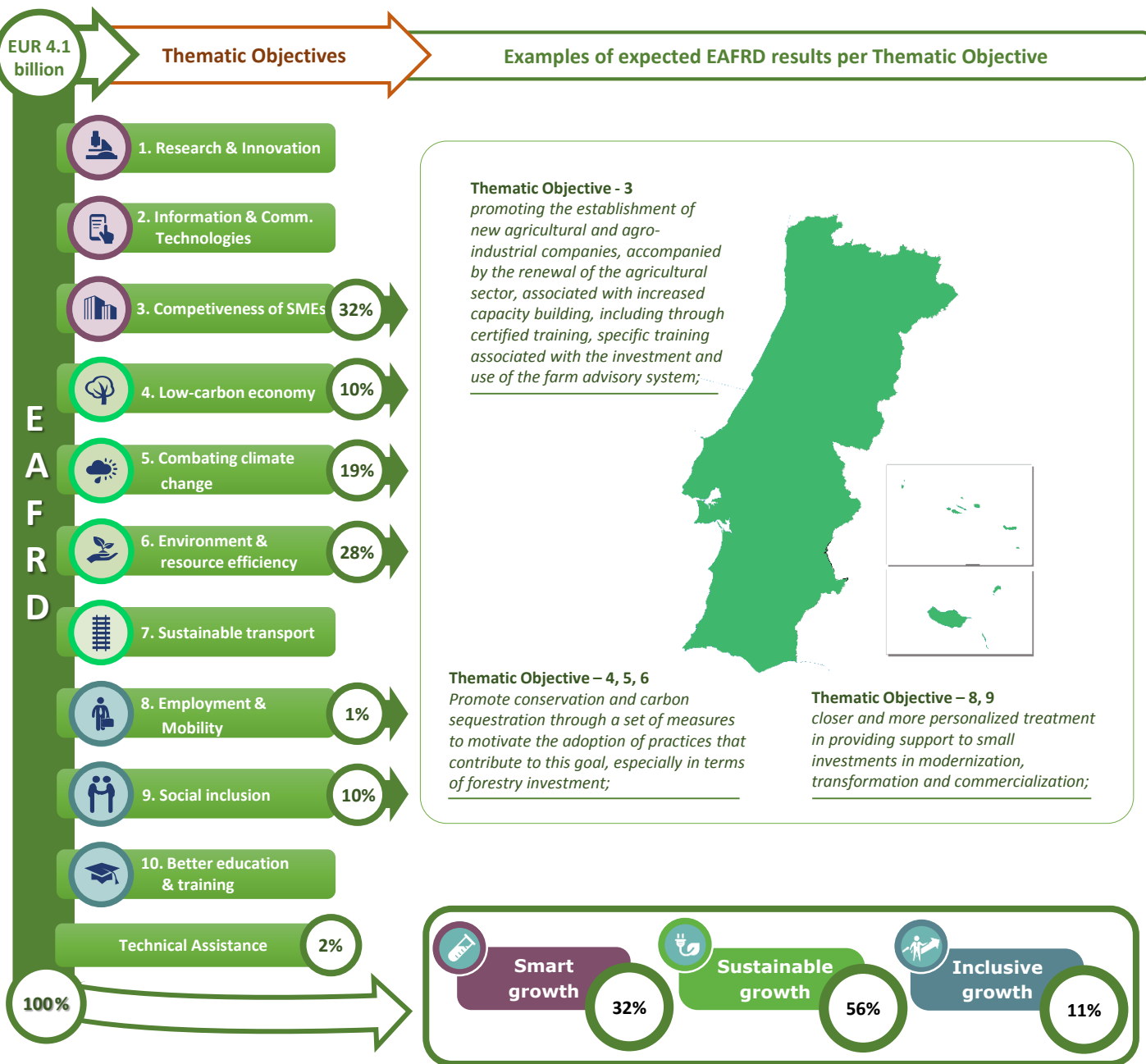


### Thematic objectives supported in Portugal and ESIF contributions





## Integrated approaches to territorial development in rural areas

### Community Led Local Development (CLLD) / LEADER

**CLLD/LEADER funding in Portugal:** 5.6% of the total EAFRD budget.

**Multi-funded Local Development Strategies:** Yes, envisaged only in the RDP for Portugal Mainland complemented with ERDF and ESF funding.

**Rural areas population limits:** Between 10 000 and 150 000 inhabitants with possible derogations in areas with specific territorial characteristics.

**Responsible body:** Portuguese Government  
**Date of PA approval:** 30/07/2014

**Please note:** The data and figures presented in this summary come from the European Commission approved version of the PA for Portugal. The information provided in this summary should not be considered a comprehensive account of the original PA content. For the full information please see the original document.

For more information please visit: [http://ec.europa.eu/contracts\\_grants/agreements/index\\_en.htm](http://ec.europa.eu/contracts_grants/agreements/index_en.htm)