

## SWEDEN

### Implementing local development strategies

#### Location

Dyrön

#### Programming period

2014 - 2020

#### Axis / Priority

P6 - Social inclusion & local  
Development

#### Measure

M19 - LEADER/CLLD

#### Fing (EUR)

Total budget 53 106  
EAFRD 35 404  
National/Regional 17 702

#### Project duration

2016 – 2017

#### Project promoter

Dyröns fiskares  
andelsförening

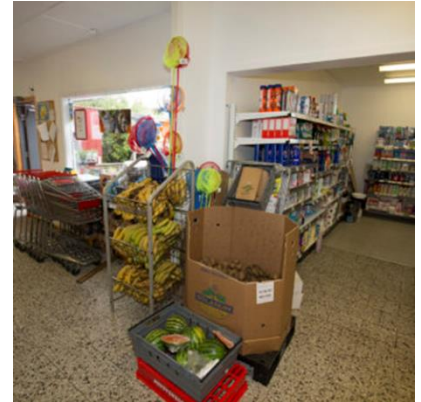
#### Contact

Bertil Gyllander  
[bertil\\_gyllander@hotmail.com](mailto:bertil_gyllander@hotmail.com)  
[m](http://m)  
tel. +46702173779

A very small island in Sweden used EAFRD support to broaden the range of services offered by their village shop.

### Summary

Dyrön is a very small island off the west coast of Sweden, with 250 all-year inhabitants. In the summer this number is close to 1 000. Efforts to resolve problems associated with its insularity (such as low economic activity, elderly population, etc.) are currently concentrated on the small local shop, which has an important role in the local community. The shop is open all year round and it is a meeting place for locals. It also serves the small number of tourists visiting the island.



In order to develop the village shop, a project was launched to create a kitchen and a small café. Using EAFRD support, local skills as well as voluntary work, the premises have been expanded to make room for the café, whilst a kitchen is being fitted into part of the current shop space.

### Results

The shopkeeper has already opened the café to locals - serving coffee and Christmas buns.

The building process has provided work for many of the island's inhabitants and many also helped with suggestions, ideas or voluntary work.

The islanders are looking forward to the spring season, when the café and the catering business will provide increased connectivity and comfort for locals as well as encouraging more tourists to visit: something that will benefit all of the enterprises on the island.

### Lessons & Recommendations

- Be persistent, especially in the planning of a project of this scale, engaging the whole community.
- Good planning is key, and to be well-prepared even before getting the LAG-decision. This gives the project a good start and makes it easier both to maintain the feeling of enthusiasm in the community and to get people engaged in the practical side of things.

## Context

Dyrön is a very small island off the west coast of Sweden, with 250 all-year inhabitants. In the summer, this number is close to 1 000. A constant worry for the islanders is that no one will be able to live on the island all-year round in the future and that the houses will all become summer houses for people from the mainland. An important part of sustaining life on the island all year round is the village shop. This is an important meeting place for the inhabitants, but it is also a valued employer and important enterprise of the island. To run a small shop on a car-free island with only a ferry to connect to the mainland is a challenge and the islanders – many of whom are elderly and quite dependant on the shop - worry for its future. Another issue is that the island does not have a café that is open in the winter.

Lately, the island has been actively trying to attract visitors all year round by repairing a walking trail around the island as part of an earlier Leader project. There is also a relatively large number of craftsmen working on the island during winter (on repairs to summer houses for example) that have expressed a need for a place to buy warm food. To have a small café connected to the shop would both provide a natural meeting place for the islanders as well as making it easier to get visitors to the island even during winter. It would also give the village shop an additional income and longer-term security.

## Objectives

The purpose of this project was to develop the village shop on Dyrön and provide it both with a kitchen and a small café space connected to the shop. The kitchen gives the shop the possibility of offering warm food, both in the café and as external catering. Having a place to drink coffee or eat lunch together creates hopes for an extended tourism season as well as a sustainable future for the island's inhabitants. In addition to the new nature trail there is also a newly built sauna by the sea; something that already attracts many visitors. These visitors are key target groups for the warm food that will be offered at the new café. In addition, all this will enable the shop to expand and employ more staff.

## Activities

The local fishermen's association, who are the ones renting out the premises to the shop, are the main project owners. They have recently conducted a successful Leader project (building the walking trail around the island) so are quite experienced. Some of this previous building work was done on voluntary basis and this in itself had a positive impact on the island community.

The plan is to expand the shop premises by 18,6 m<sup>2</sup> to make room for the café, whilst the kitchen will be situated in part of the existing shop space. Permission was granted by the municipality and the café was built in October - December 2016, with the kitchen due to be completed in March 2017. The tenant in the shop has started serving coffee and snacks to the islanders, and will launch the catering business once the kitchen is completed.



## Main results

The official opening is planned in February 2017, but the shopkeeper has already opened the café to locals - serving coffee and Christmas buns.

The building process provided work for many of the island's inhabitants and many also helped with suggestions, ideas or voluntary work.

The islanders are looking forward to the spring season, when the café and the catering business will provide increased connectivity and comfort for locals as well as encouraging more tourists to visit: something that will benefit all of the enterprises on the island.

*“These islanders are really working hard to make their community better. It is really impressive how they are working to make their island alive all year round”*

Representative from Tjörns municipality

---

### Additional sources of information

[www.leadersodrabohuslan.se/godkant\\_projekt/cafe-och-kok-affaren-pa-dyron/](http://www.leadersodrabohuslan.se/godkant_projekt/cafe-och-kok-affaren-pa-dyron/)