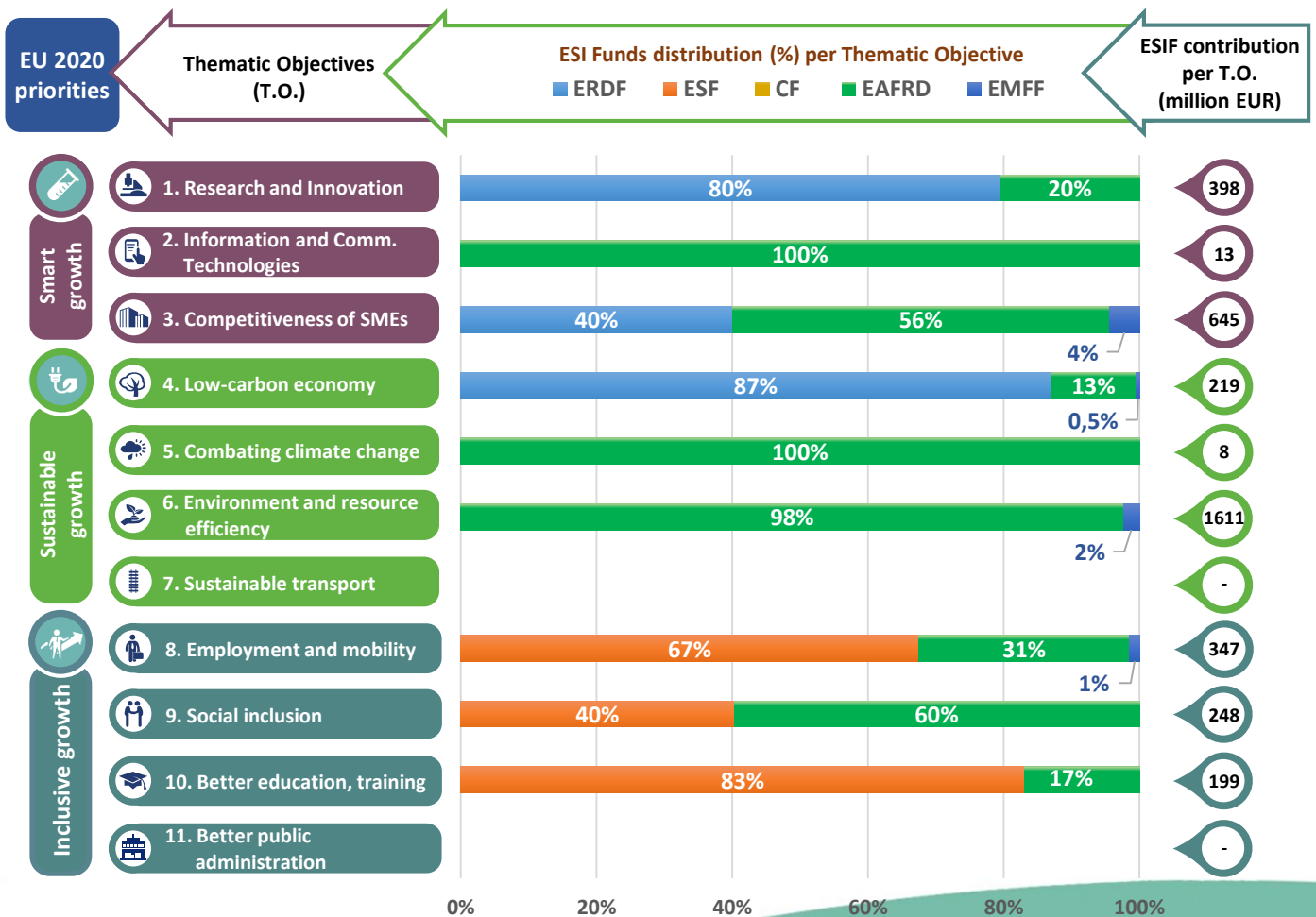
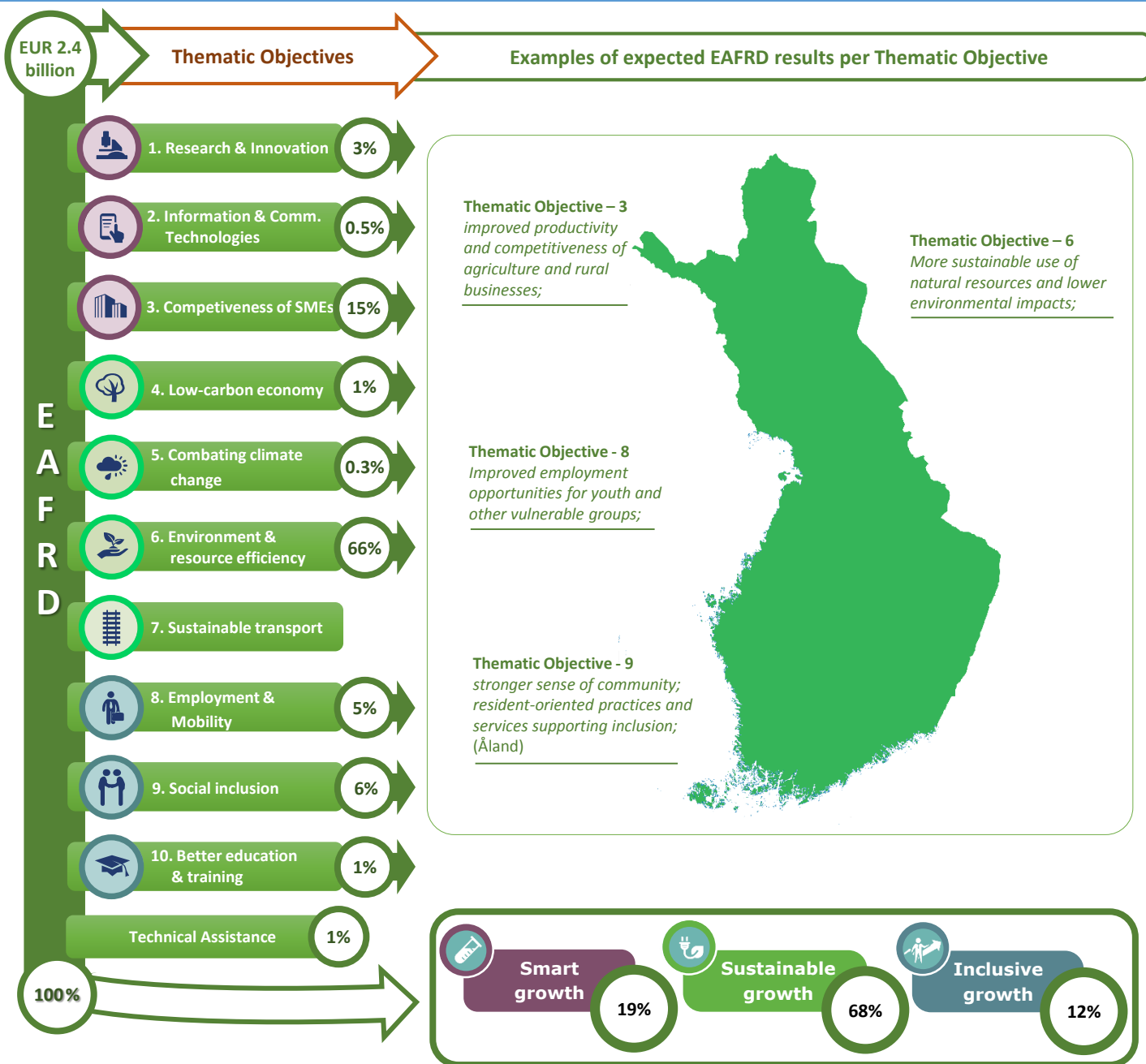


Thematic objectives supported in Finland and ESIF contributions





Integrated approaches to territorial development in rural areas

Community Led Local Development (CLLD) / LEADER

CLLD/LEADER funding in Finland: Minimum 5% of the total EAFRD budget

Multi-funded Local Development Strategies: Yes. Local Action Groups and Fisheries Local Action Groups can apply for funding from other EU funds to ensure that the implementation of development strategies covers all sectors.

Rural areas population limits: All rural areas in Finland excluding cities and urban areas, with more than 15 000 inhabitants.

Responsible body:	Ministry of Employment and the Economy
Date of PA approval:	07/10/2014

Please note: The data and figures presented in this summary come from the European Commission approved version of the PA for Finland. The information provided in this summary should not be considered a comprehensive account of the original PA content. For the full information please see the original document.

For more information please visit: http://ec.europa.eu/contracts_grants/agreements/index_en.htm