

Connecting rural Europe

Learning from the past, preparing for the future

SPEAKERS' PROFILES



European Network for
Rural Development

Opening plenary

Heli Walls

Heli Walls is the managing director and project coordinator for four Local action groups (LAGs) since 1996. In 2013 Mr. Walls started to work as LEADER advocate for the Village Action Association in Finland - which represents the 55 LAGs in the country - and works currently as member of an NGO promoting Community-led Local Development (CCLD) in Finland.

Contact : heli.walls@kylatoiminta.fi



Juha-Matti Markkola

Juha-Matti Markkola lives in the middle of Finnish countryside. He is a farmer, forest owner and forester (with a master of science in forestry), a rural entrepreneur and local politician. He has also been the network coordinator for the Finnish rural network unit for almost seven years now, responsible for LEADER, transnational cooperation and rural entrepreneurship.

Contact: juha-matti.markkola@mavi.fi



Nathalie Prouheze

Nathalie Prouheze is co-managing the French National Rural Network since 2011 and is a member of the Coordination Committee of the European Network for Rural Development. She has a vast experience in the rural development sector, with more than 10 years in monitoring and evaluating projects. She has also been involved in regional planning and transnational cooperation. Nathalie is also very active in her leisure time: she is a wine enthusiast and a co-founder of a French-Mexican association.

Contact: Nathalie.PROUHEZE@datar.gouv.fr



Connecting rural Europe

Learning from the past, preparing for the future

SPEAKERS' PROFILES



European Network for
Rural Development

Workshop 1: Improving RDP implementation

David Wilford

David Wilford has worked in rural development for most of his career – a wide range of organisations including ADAS, the Farming and Rural Conservation Agency, the Rural Development Service and as Head of the Defra team in the Government Office for Yorkshire and The Humber. Now he represents the UK on the EU LEADER Sub-committee and the National Rural Network, as well as being a member of the DG-REGIO technical group on Community-led Local Development.

Contact: David.Wilford@defra.gsi.gov.uk



Isabelle Jaumotte

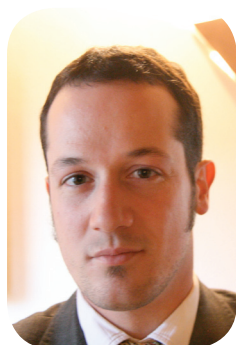
Isabelle Jaumotte is an agronomist with a specialization in horticulture. Since 2004, Advisor at FWA Advisory Service Unit on topics as rural development support to installation and investments, organic farming, environment and management (trading license, information, diagnostic operations and support to administrative procedures).

Contact: Isabelle.jaumotte@fwa.be

Judit Racz

LAG manager of Felső-Homokhátság Local Action Group in Hungary since 2009. The size of the LAG territory is 700 km² covering 13 communities inhabited by 52 000 citizens. Current member of three other NGOs and provides advice for many other organisations. Volunteer in several campaigns dealing with the establishment of local environmental protection, advocacy, equality and social security.

Contact: racz.judit@leaderkontakt.hu



Riccardo Passero

Riccardo Passero is a rural development expert, based at the Italian Ministry of Agricultural, Food and Forestry Policies (Mi.p.a.a.f). He is involved in the coordination of the rural development policy at national level. Mr. Passero participated in the drafting of the National Rural Network strategy and actions. He took part to several activities concerning the governance of the regional RDPs, exchange of experience, transfer of good practises, monitoring and evaluation.

Contact: r.passero@mpaaf.gov.it

Workshop 2 : Increasing stakeholder involvement in rural development implementation

Cécile Schalenbourg

Cécile Schalenbourg is in charge of communication and cooperation within the Walloon Rural Network. Having been active in rural development for 14 years (Leader II, Leader+ and EAFRD), she collects case studies, interesting experiences and shares them as stories (articles, videos, pictures).

Contact: c.schalenbourg@skynet.be



James Elliott

James Elliott currently works for the English National Rural Network. His roles include managing the RDPE Network website, social media tools and dealing with day-to-day enquiries about the RDPE. James has a degree in Land Management from the University of Reading.

Contact: James.elliott@defra.gsi.gov.uk

Jessica Morgan

A senior community officer with responsibility for community participation and engagement. Having worked in the community and voluntary sector for over a decade, Jessica has been working for PLANED (Pembrokeshire Local Action Network for Enterprise and Development) since 2006, specialising in rural regeneration and participatory community engagement, LEADER methodologies.

Contact: jessicam@planed.org.uk



Külli Kaare

Head of the Department of Research and Development at the Ministry of Agriculture of Estonia. Ms Kaare has 13 years of experience in co-ordination of national funded programmes for applied research in the field of agriculture, plant breeding and also collection and conservation programme of plant genetic resources. She is also an Estonian delegate in the Standing Committee on Agricultural Research (SCAR) and FACCE-JPI.

Contact: kylli.kaare@agri.ee

Connecting rural Europe

Learning from the past, preparing for the future

SPEAKERS' PROFILES



European Network for
Rural Development

Martina Bolli

Martina Bolli is a researcher in the fields of labour economics, cohesion and development policies, public investments appraisal since 2003. Researcher at the Italian National Institute for Agriculture Economics (INEA) since 2006. Her main activities are related to the Italian National Rural Network and concern the governance and the evaluation processes of the rural development policy funded by EAFRD.

Contact: bolli@inea.it



Michael Fischer

Michael Fischer is a sociologist and he has been working as a consultant at OEAR Regional Consultants Ltd. since 2008. His main tasks are impact orientated strategy development, monitoring and evaluation mainly in the field of rural development. He is part of the National Support Unit for the Austrian National Rural Network (Netzwerk Land).

Contact: m.fischer@netzwerk-land.at

Workshop 3: An enlarged role for networking in cooperation and LEADER

Charlotta Heimersson

Charlotta Heimersson has been a LAG manager since 2008. She has extensive experience in the agricultural sector with a focus on regional development.

Contact: charlotta.heimersson@enkoping.se



Gérard Peltre

Expert in local and regional development, Mr Peltre is also the president of the international association "Rurality – Environment – Development (RED)" and a founding member of the organisation created in 1980. Moreover, he is a representative of the ENRD Coordination Committee and LEADER Subcommittee.

Contact: gerard.peltre@wanadoo.fr

Funded by the





Kirsten Birke Lund

Kirsten Birke Lund has participated in and supervised several rural development projects. She is a member of the Coordinating Committee for Danish LAGs and representing the LAG's in the Monitoring Committee for the Danish Program.

Kirsten Birke Lund is the Vice-President of ELARD, the European LEADER Association for Rural Development.

Contact: Birke.lund@mail.dk

Maurizio Reveruzzi

Coordination of the Permanent Service of Information and Piloting in the field of financial engineering financed with funds from the implementation of the Programme of European Initiative Leader II.

Coordination of the project, responsible for strategic planning and monitoring, implementing the local development strategy - Campania Region - RDP 2007-2013 Axis 4, LEADER approach.

Contact: coordinamento@galpartenio.it



Severine Bressaud

With more than 10 years of experience in local development, Ms Bressaud has been working for the LEADER programme since Leader+ programming period. She is responsible for cooperation in the French national Network Support Unit and helps French LAGs and regional rural networks to develop cooperation projects at each step of the process. She is also in charge of other missions in the field of cooperation and European programmes (INTERREG, Youth in action, URBACT...).

Contact: severine.bressaud@eureka21.eu

Steven Delahaye

Steven Delahaye was responsible for the final evaluation of the Leader + program in three different French territories. He has also been a LAG manager during LEADER 2007-2013 for the "Othe et Armanche" LAG. This rural area is located in the Region Champagne-Ardenne in the Eastern area of France. Recently, the LAG implemented two transnational projects on the topics of touristic territorial organization and the development of a labeling strategy for European villages.

Contact: gal.othe-armance@orange.fr



Connecting rural Europe

Learning from the past, preparing for the future

SPEAKERS' PROFILES



European Network for
Rural Development



Thomas Mueller

Involvement in LEADER since 1999 as a local actor, LAG Manager and independent expert for rural development. Until now Mr Mueller has managed around 150 LEADER-projects, some of them awarded. Since 2006 he has been advising LAGs, NGOs and GOs in many EU member-states.

Contact: mueller@projects4.info

Closing plenary

Ieva Kalnina

Ieva Kalnina has been working with European cooperation since 1989. She is currently responsible for implementing the ERDF supported Interact programme. Her previous experience includes different Interreg programmes and cooperation in the Baltic Sea Region.

Contact: leva.kalnina@interact-eu.net



Paul Soto

Since 2009, he has been the team leader of the Support Unit for FARNET, the European fisheries area network, after having assisted DG MARE with the launch of Axis 4 of the European Fisheries Fund (EFF). He also manages the thematic pole of nine networks and around a hundred cities supported by the URBACT programme to explore new solutions and share good practice in the field of innovation, economic and employment development.

Contact: info@farnet.eu

Stig Hansson

Entrepreneur. Member of PREPARE network – Partnership for Rural Europe – since 2004, representing “All Sweden Shall Live”.

Contact: petes@live.se

