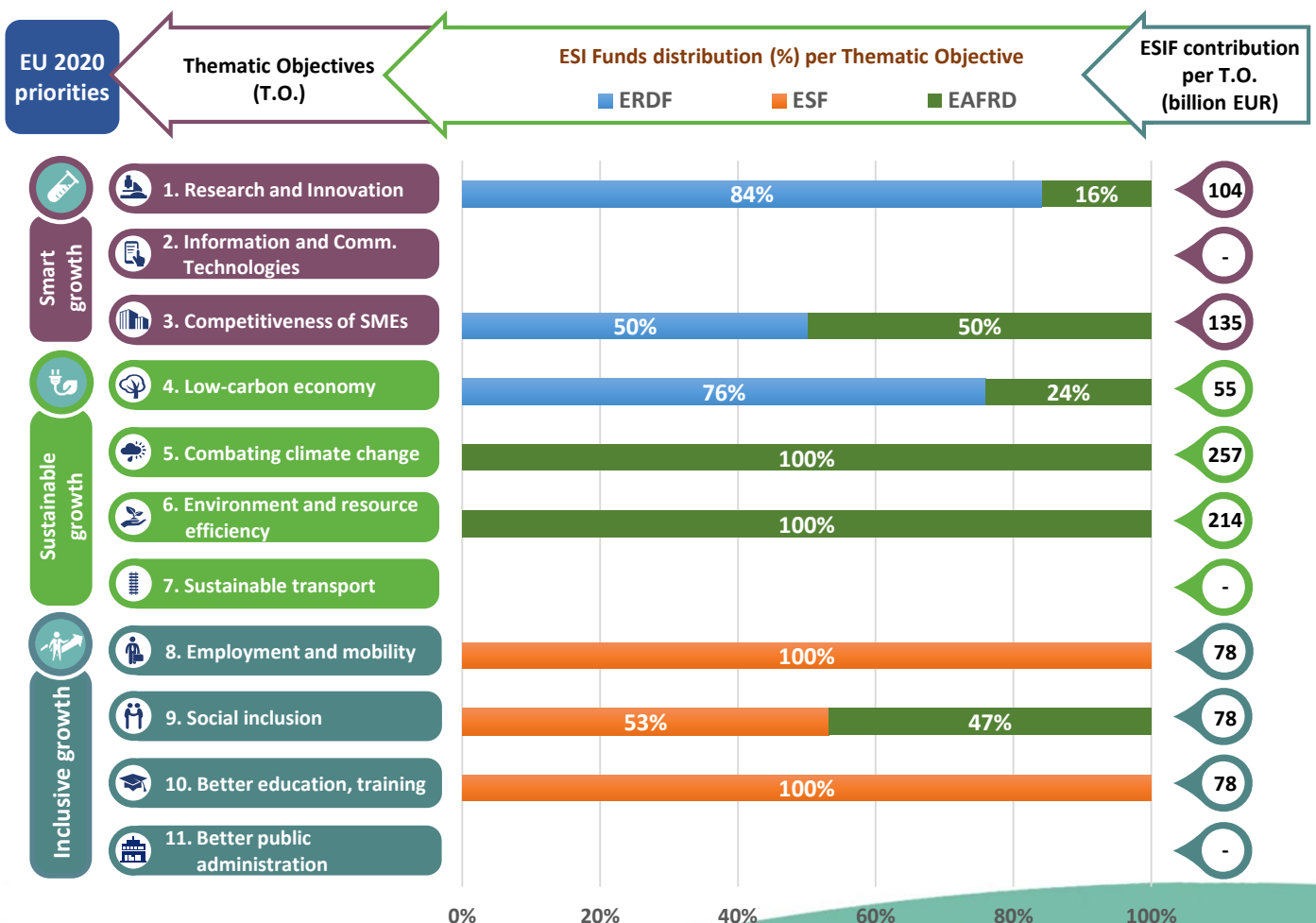
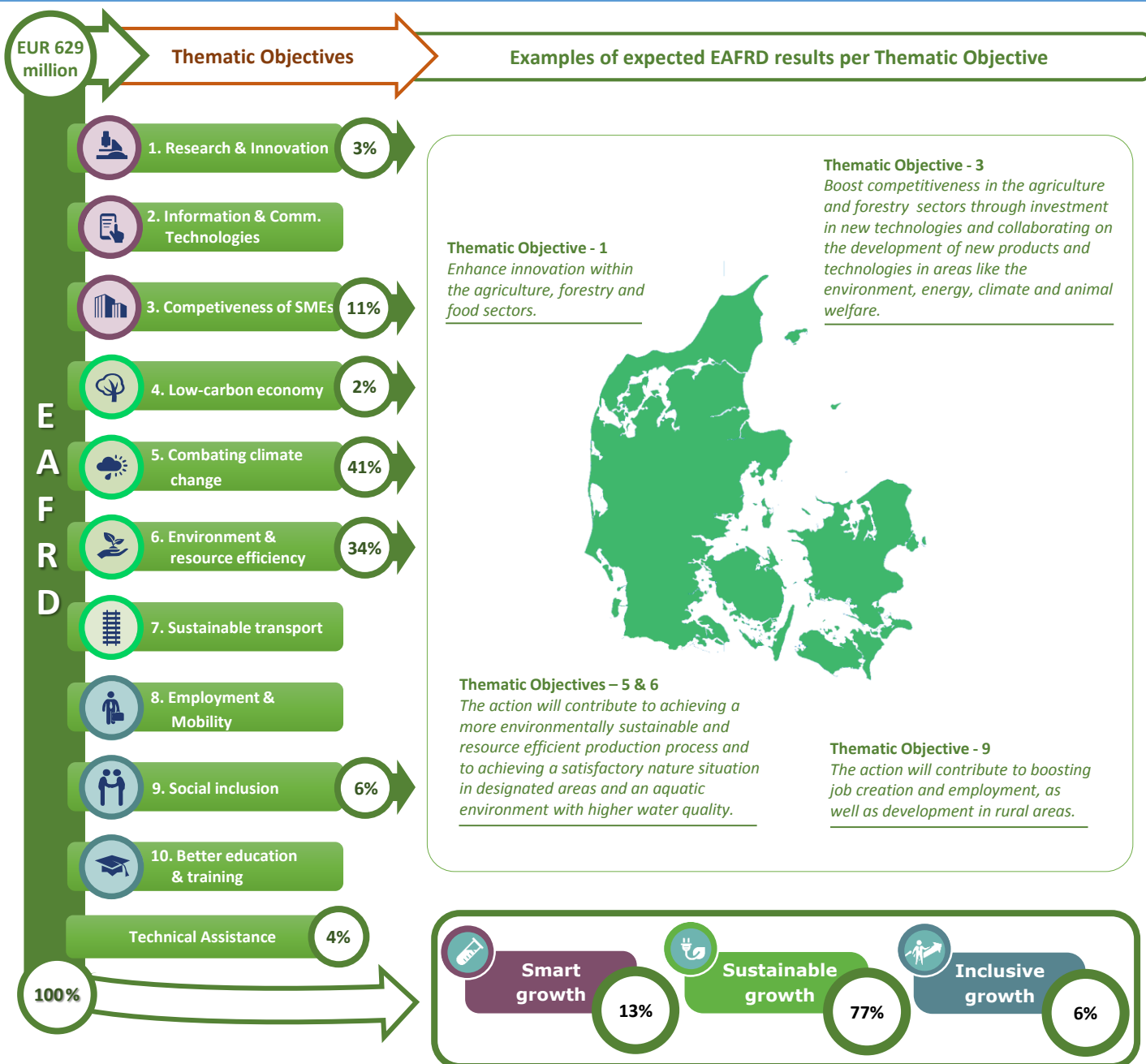


* EMFF data were not available at the time of publication of the Partnership Agreement.

Thematic objectives supported in Denmark and ESIF contributions





Integrated approaches to territorial development in rural areas

Community Led Local Development (CLLD) / LEADER

CLLD/LEADER funding in Denmark: 5.2% of the total EAFRD budget

Multi-funded Local Development Strategies: Not specified in the Partnership Agreement.

Rural areas population limits: Rural areas are delimited for the purposes of the EAFRD programme as all areas outside the thirteen largest urban areas in Denmark (defined as urban areas with a population of more than 45 000).

Responsible body:	Ministry of Business and Growth (www.evm.dk)
Date of PA approval:	05/05/2014

Please note: The data and figures presented in this summary come from the European Commission approved version of the PA for Denmark. The information provided in this summary should not be considered a comprehensive account of the original PA content. For the full information please see the original document.

For more information please visit: http://ec.europa.eu/contracts_grants/agreements/index_en.htm