



European Rural Networks' Assembly

RNs' activities update and actions for 2020: ENRD Evaluation Helpdesk

Hannes WIMMER, Team Leader

6th Meeting of the European Rural Networks' Assembly
Brussels, 16 December 2019



POWERED BY

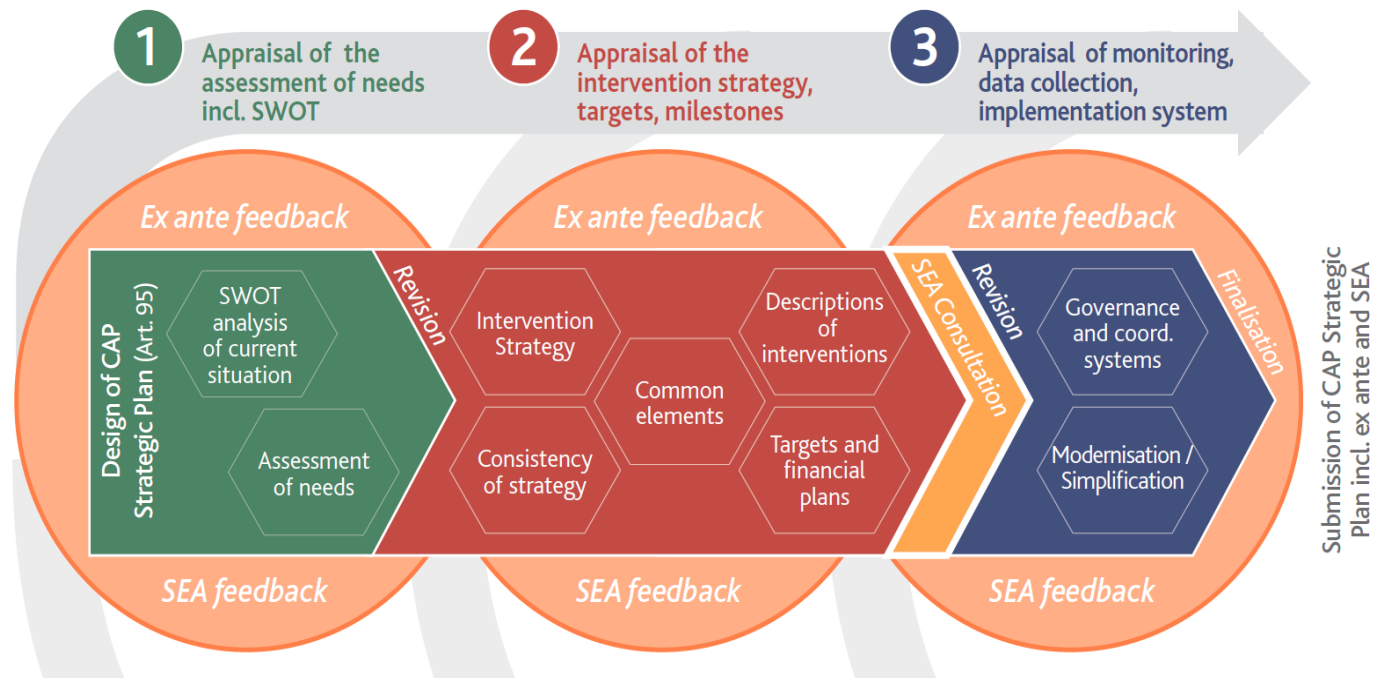




Recent and ongoing activities



Tools to support the ex-ante evaluation of the CAP Strategic Plan

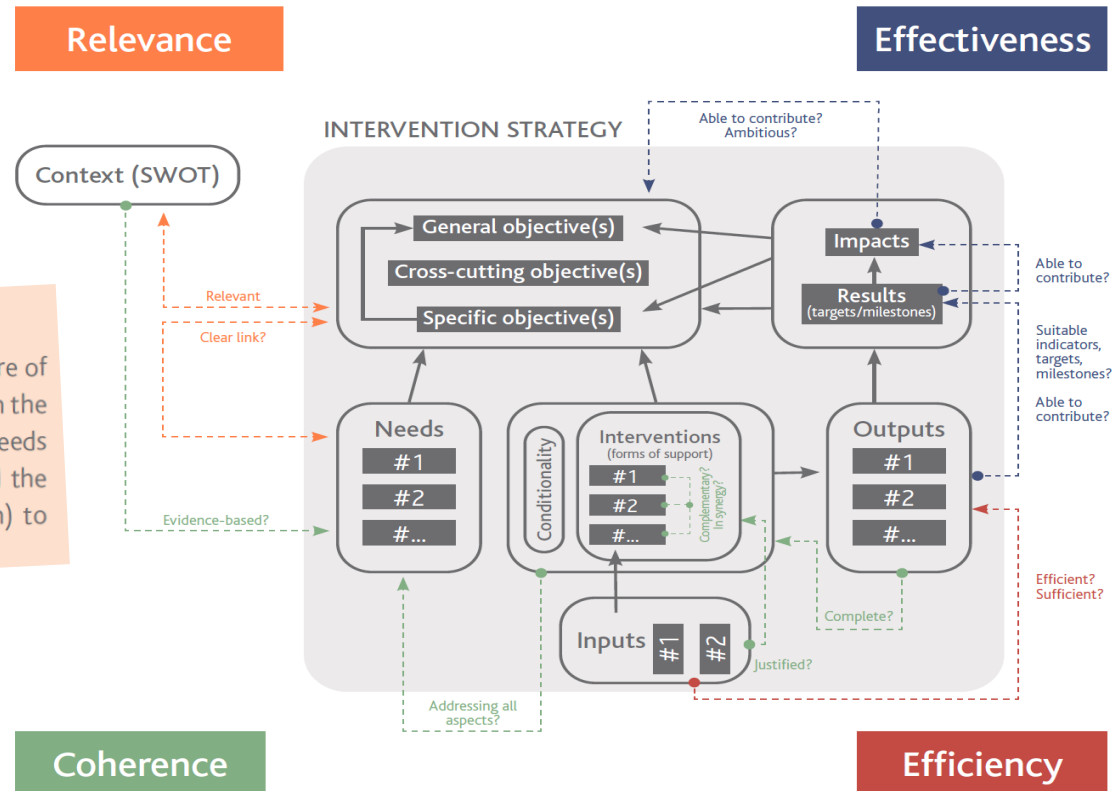


Read more:

Thematic Working Group 7 – Preparing for the Ex-ante Evaluation of the CAP Strategic Plan.

Key ideas for appraising your intervention strategy...

The intervention strategy (intervention logic) is at the core of EU support programmes as it shows the logical link between the problem that needs to be tackled (or the objective that needs to be pursued), the underlying drivers of the problem and the available policy options (or the EU actions actually taken) to address the problem or achieve the objective.

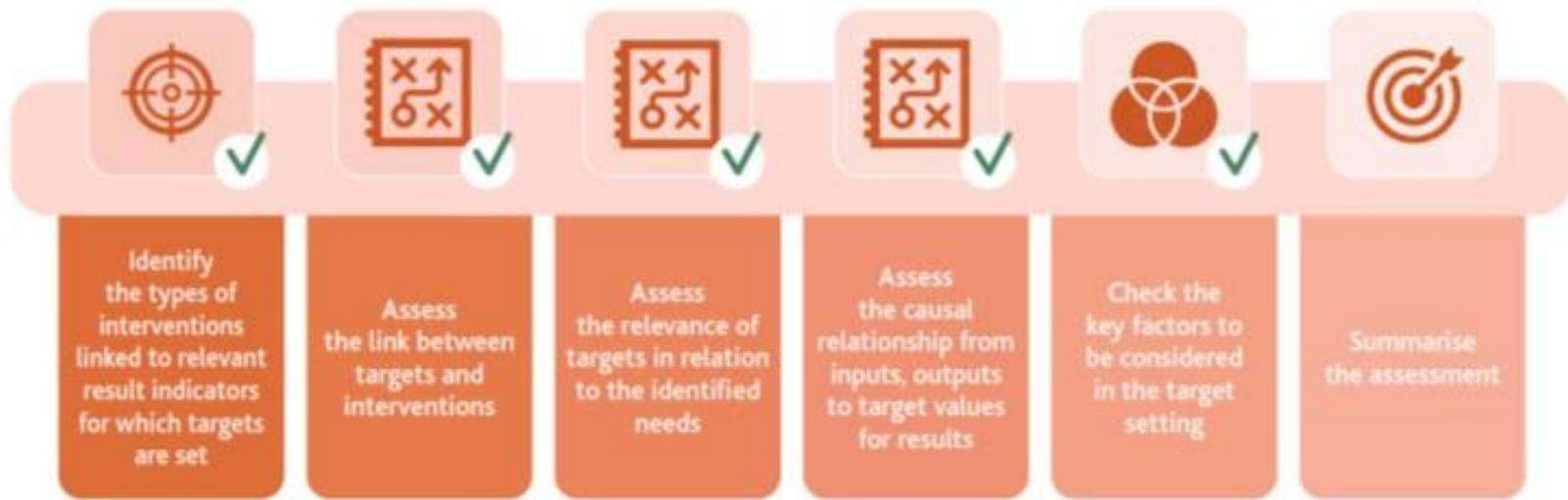


Read more:

Thematic Working Group 7 - Tool 3.1 Examples of guiding questions for the appraisal of the intervention strategy, targets and milestones.



Steps for structuring the appraisal of quantified target values and milestones...



Read more:

Thematic Working Group 7- Tool 3.3 Appraisal of quantified target values and milestones.



Stakeholders' lessons on appraising the intervention strategies, targets, milestones...



'My vision is that every policy designer should have an impact model on the wall, printed in large format, which has to be improved more and more over the years.'

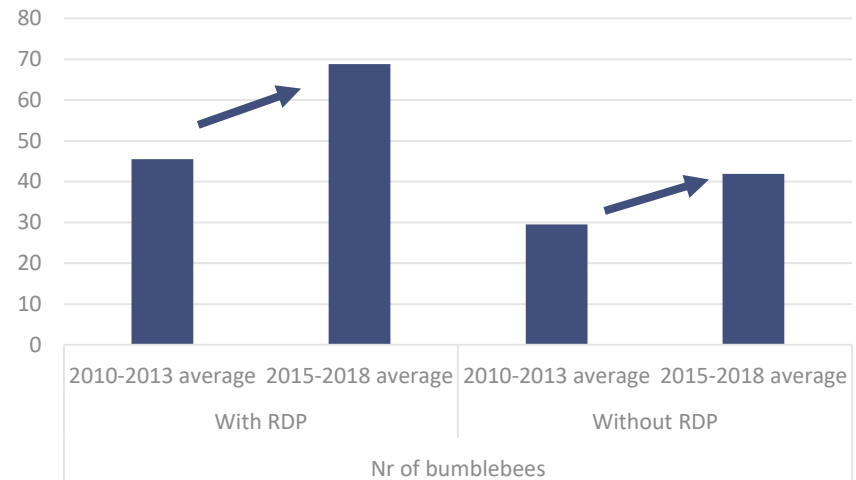
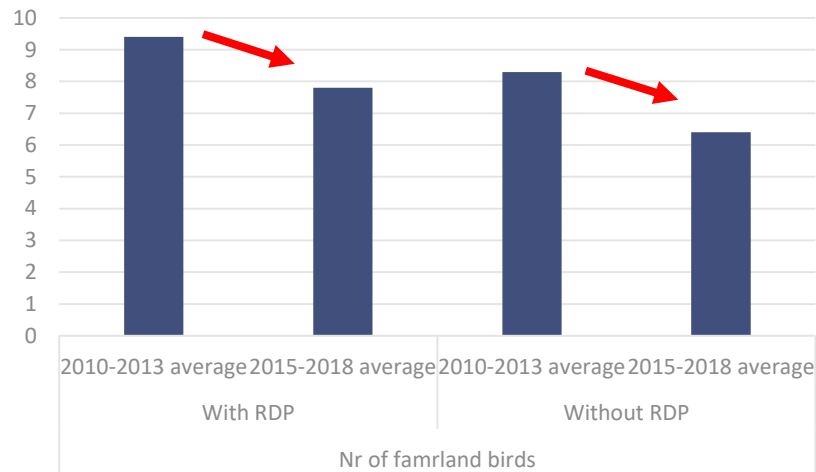
Evaluator, Austria



Read more:

Appraising Intervention Strategies Under the CAP: Experiences and Outlook. Good Practice Workshop Rome, 15-16 October 2019

Stakeholders' lessons on assessing RDP achievements and impacts in 2019



'Caution with making conclusions based on one indicator – different indicators may give different results (e.g. bumblebees vs farmland birds'. Evaluator, Estonia.



Read more:

How to demonstrate RDP achievements?

Reporting of evaluation findings, indicators, lessons for ex post. Good Practice Workshop Sevilla, 11-12 December 2019



Building evaluation capacities in the Member States...

EvaluationWORKS! 2019

- 'AIR 2019 reflections and follow-up'
- 'Introduction to the PMEF for the CAP post 2020'
- 'Ex ante evaluation of the CAP Strategic Plan'



Read more:

Capacity Building section on the Evaluation Helpdesk website.



Synthetising the evaluations findings of the AIRs in 2019...



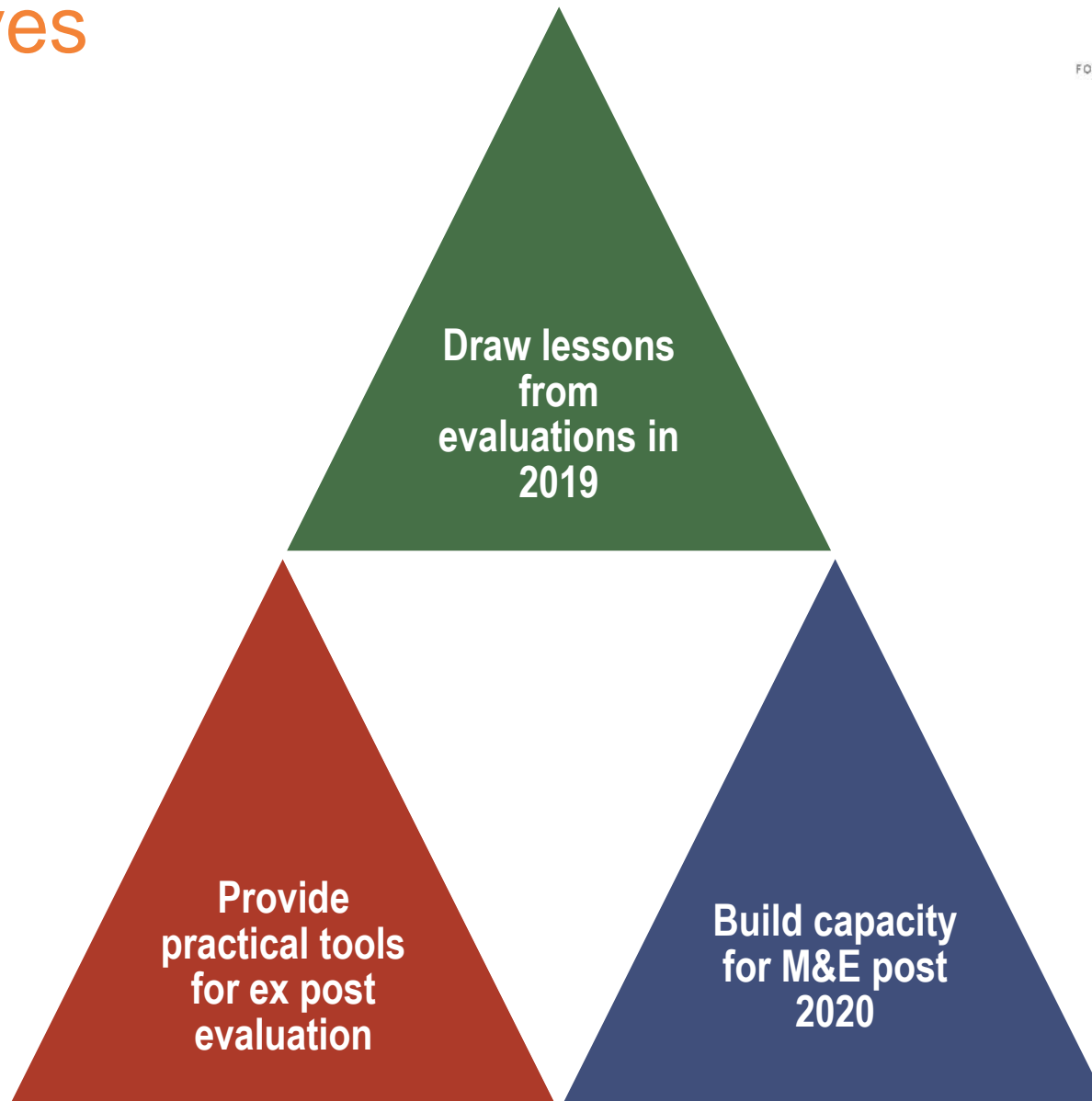
Read more:

[Summary Reports of the evaluation components of the AIRs 2019](#) and [European Commission's Staff Working Document \(December 2019\)](#)



Annual Work Programme 2020

Objectives





Ex post evaluation of RDPs 2014-2020: learning from practice

Objectives

- Address **weaknesses** in assessment of RDP achievements
- Improve calculation of **complementary result and impact indicators**
- Tackle **emerging issues** in the assessment of priority areas (e.g. environment, climate)



Improving evidence-based RDP evaluations in view of the ex-post

Topics

- Following up on the lessons from the evaluations in 2019
- Overcoming the challenges in data/indicators
- Addressing specific priority areas for the ex post evaluation

Good Practice Workshops



13



Assessing RDP effects (topic tbc)

Q2

Improve reporting on RDP achievements and impacts in priority area (topic linked to TWG-8)

14



Preparation of the evaluation activities for the CAP post-2020

Q3

Planning evaluation needs, data needs, data management

15

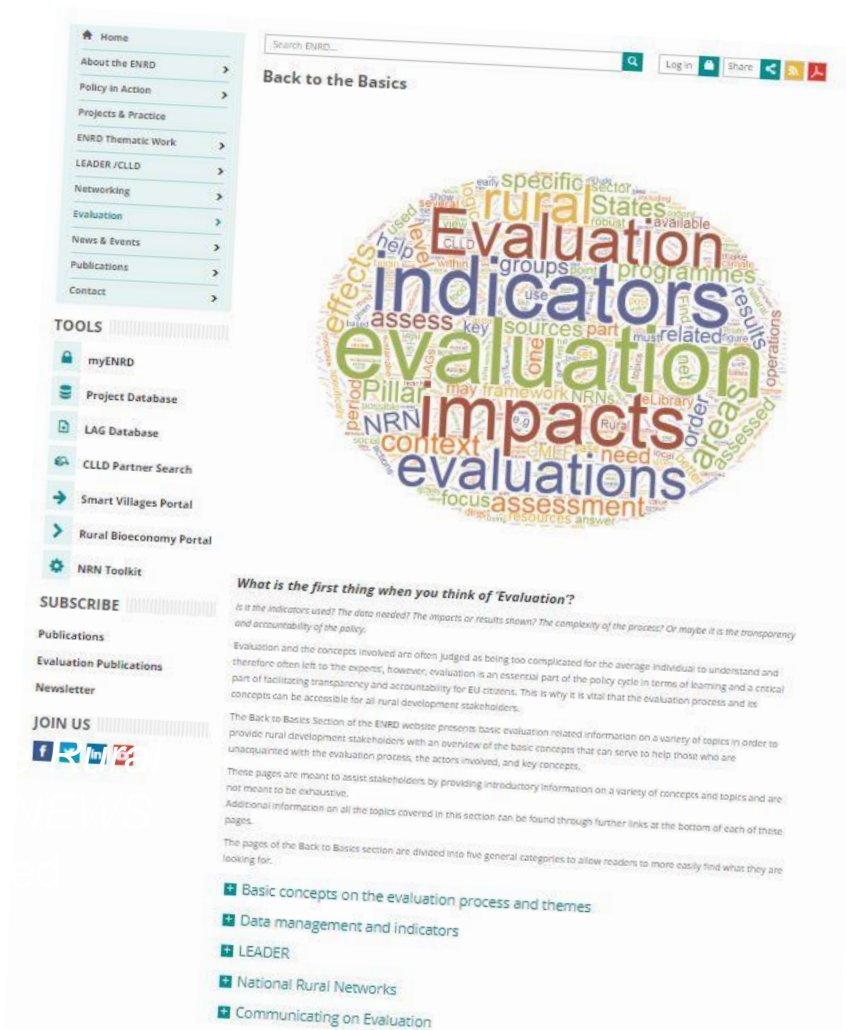


Evaluation under the CAP

Q4

Concepts, process and use of evaluation under Pillar 1 and 2

Website
Newsletters
Factsheets



Home
About the ENRD
Policy in Action
Projects & Practice
ENRD Thematic Work
LEADER / CLLD
Networking
Evaluation
News & Events
Publications
Contact

TOOLS

- myENRD
- Project Database
- LAG Database
- CLLD Partner Search
- Smart Villages Portal
- Rural Bioeconomy Portal
- NRN Toolkit


SUBSCRIBE

Publications
Evaluation Publications
Newsletter

JOIN US

Search ENRD... Log in Share

Back to the Basics



What is the first thing when you think of 'Evaluation'?

Is it the indicators used? The data needed? The impacts or results shown? The complexity of the process? Or maybe it is the transparency and accountability of the policy.

Evaluation and the concepts involved are often judged as being too complicated for the average individual to understand and therefore often left to the experts, however, evaluation is an essential part of the policy cycle in terms of learning and a critical part of facilitating transparency and accountability for EU citizens. This is why it is vital that the evaluation process and its concepts can be accessible for all rural development stakeholders.

The Back to Basics Section of the ENRD website presents basic evaluation related information on a variety of topics in order to provide rural development stakeholders with an overview of the basic concepts that can serve to help those who are unfamiliar with the evaluation process, the actors involved, and key concepts.

These pages are meant to assist stakeholders by providing introductory information on a variety of concepts and topics and are not meant to be exhaustive.

Additional information on all the topics covered in this section can be found through further links at the bottom of each of these pages.

The pages of the Back to Basics section are divided into five general categories to allow readers to more easily find what they are looking for:

- Basic concepts on the evaluation process and themes
- Data management and indicators
- LEADER
- National Rural Networks
- Communicating on Evaluation

Rural Evaluation NEWS



Read more:
Back to the Basics
https://enrd.ec.europa.eu/evaluation/back-basics_en



Thank you for your attention!

European Evaluation Helpdesk for Rural Development
Boulevard Saint Michel 77-79
B-1040 Brussels
Tel. +32 2 7375130
E-mail info@ruralevaluation.eu
<http://enrd.ec.europa.eu/evaluation>