

Search

Total results: 20.



[Anton Vrbnjak Farm - Diversifying into therapeutic horse riding](#) ^[1]

Keywords:

Animal husbandry, Entrepreneurship, Family farming, Healthcare, Job creation, LEADER/CLLD, Social services, Tourism

Countries:

Slovenia

Expanding the range of tourist offer in a LAG area by supporting a small farm to diversify into horseback riding and therapeutic riding.



Innovative use of wood for producing fashion items [2]

Keywords:

Added value, Direct marketing, Diversification, Entrepreneurship, Innovation, Job creation, Product quality, Rural business, Tourism, Women

Countries:

Poland

A female entrepreneur set up a company to produce high quality fashion products made of natural material.



TERROIR MOSELLE

Terroir Moselle - Wine and architecture route [3]

Keywords:

Added value, Agriculture, Bioeconomy, Competitiveness, Cooperation, Culture, Entrepreneurship, Food & Drink, Inter-territorial/Transnational cooperation, LEADER/CLLD, Local Development Strategy, Market development, Nature conservation, Tourism

Countries:

France, Germany, Luxembourg

The 'Terroir Moselle wine and architecture route' is a 'preparatory' cooperation project gathering six LEADER areas, five wine growing areas from four regions and three countries.



Melitzazz - Promoting the Tsakonian heritage [4]

Keywords:

Culture, Diversification, LEADER/CLLD, Tourism

Countries:

Greece

An example of a LEADER financed local festival that became a tool to promote cultural heritage and create the conditions necessary for sustainable local development.

Setting up a grocery and a social café to support people with intellectual disabilities enter the job market and gain their independence.



Inclusive grocery store and social café 'Beim Lis' [5]

Keywords:

Direct marketing, Job creation, LEADER/CLLD, Local Development Strategy, Social inclusion

Countries:

Luxembourg

Setting up a grocery and a social café to support people with intellectual disabilities enter the job market and gain their independence.



Cooperative 'Vun der Atert' - A community based model for quality meat production [6]

Keywords:

Access to market, Agriculture, Animal husbandry, Cooperation, Direct marketing, Diversification, LEADER/CLLD, Local Development Strategy, Product quality

Countries:

Luxembourg

An integrated, community focussed model for quality meat production based on short supply chains, working together, and exchanging experiences between consumers and producers.



[Purchase of Exoskeleton Bionic Rehabilitation Suit](#) [7]

Keywords:

Healthcare, Job creation, LEADER/CLLD, Rural services, Social inclusion, Social services

Countries:

Ireland

The project made an Ekso Bionics Exoskeleton available to patients in rural areas. This enables community rehabilitation of patients recovering from spinal injuries, strokes and brain injuries.



[The Gap Arts Festival](#) [8]

Keywords:

Culture, LEADER/CLLD, Local Development Strategy, Rural proofing

Countries:

Ireland

A LEADER measure grant helped purchase film and photography equipment and training for a rural arts festival community project.



[Caherconnell Archaeology Field School](#) [9]

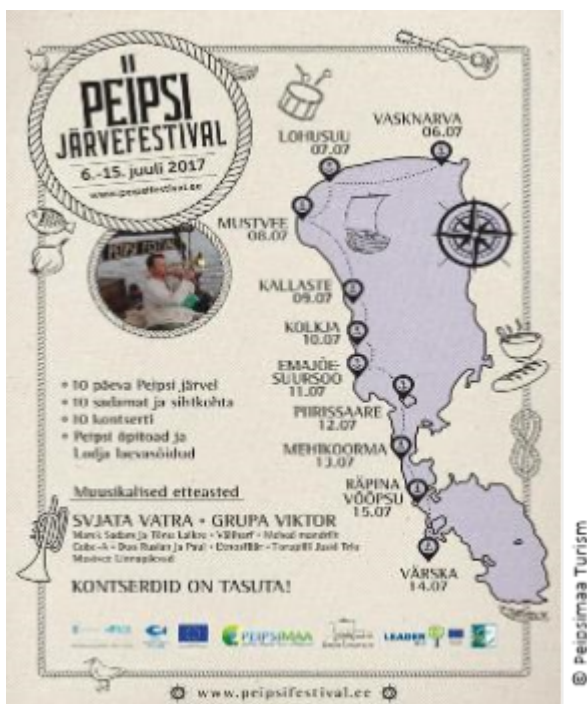
Keywords:

Culture, LEADER/CLLD, Tourism, Vocational training & skills acquisition

Countries:

Ireland

LEADER funding enabled the purchase of specialist equipment for training students in the use of modern and sophisticated archaeological surveying techniques.



[Lake Peipus Festival 2017](#) [10]

Keywords:

Culture, Inter-territorial/Transnational cooperation, LEADER/CLLD, Tourism

Countries:

Estonia

A cooperation project was set up between 4 LAGs and 1 FLAG to promote local heritage and stimulate the local economy around a lake area.

Pages

[1](#)

[2](#) [11]

[next >](#) [11]

[last »](#) [11]

Source URL:

https://enrd.ec.europa.eu/projects-practice/_en?project_keywords_filter=19753&%3Bamp%3Bproject_country=All&%3Bamp%3Bfield_enrd_prj_measure_tid=All&%3Bamp%3Bfield_enrd_prj_focus_area_tid=All&%3Bamp%3Bf%5B0%5D=im_field_enrd_prj_measure%3A17098&%3Bf%5B0%5D=im_field_enrd_prj_focus_area%3A17127&f%5B0%5D=im_field_enrd_prj_keywords%3A19757&f%5B1%5D=im_field_enrd_prj_keywords%3A19727&f%5B2%5D=im_field_enrd_prj_keywords%3A19728&f%5B3%5D=im_field_enrd_prj_keywords%3A19758&f%5B4%5D=im_field_enrd_prj_keywords%3A19747&f%5B5%5D=im_field_enrd_prj_keywords%3A20467&f%5B6%5D=im_field_enrd_prj_measure%3A17110

Links

[1] https://enrd.ec.europa.eu/projects-practice/anton-vrbnjak-farm-diversifying-therapeutic-horse-riding_en

[2] https://enrd.ec.europa.eu/projects-practice/innovative-use-wood-producing-fashion-items_en

[3] https://enrd.ec.europa.eu/projects-practice/terroir-moselle-wine-and-architecture-route_en

[4] https://enrd.ec.europa.eu/projects-practice/melitzazz-promoting-tsakonian-heritage_en

[5] https://enrd.ec.europa.eu/projects-practice/inclusive-grocery-store-and-social-cafe-beim-lis_en

[6] https://enrd.ec.europa.eu/projects-practice/cooperative-vun-der-ater-community-based-model-quality-meat-production_en

[7] https://enrd.ec.europa.eu/projects-practice/purchase-exoskeleton-bionic-rehabilitation-suit_en

[8] https://enrd.ec.europa.eu/projects-practice/gap-arts-festival_en

[9] https://enrd.ec.europa.eu/projects-practice/caherconnell-archaeology-field-school_en

[10] https://enrd.ec.europa.eu/projects-practice/lake-peipus-festival-2017_en

[11]

https://enrd.ec.europa.eu/projects-practice/_en?page=1&project_keywords_filter=19753&amp%3Bamp%3Bproject_country=All&amp%3Bamp%3Bfield_enrd_prj_measure_tid=All&amp%3Bamp%3Bfield_enrd_prj_focus_area_tid=All&amp%3Bamp%3Bf%5B0%5D=im_field_enrd_prj_measure%3A17098&amp%3Bf%5B0%5D=im_field_enrd_prj_focus_area%3A17127&f%5B0%5D=im_field_enrd_prj_keywords%3A19757&f%5B1%5D=im_field_enrd_prj_keywords%3A19727&f%5B2%5D=im_field_enrd_prj_keywords%3A19728&f%5B3%5D=im_field_enrd_prj_keywords%3A19758&f%5B4%5D=im_field_enrd_prj_keywords%3A19747&f%5B5%5D=im_field_enrd_prj_keywords%3A20467&f%5B6%5D=im_field_enrd_prj_measure%3A17110

