

Search

Total results: 7.



[Mid Ireland Adventure](#) ^[1]

Keywords:

Entrepreneurship, Job creation, LEADER/CLLD, Rural Inspiration Awards: nominees, Rural SMEs, Tourism

Countries:

Ireland

A start-up company specialising in outdoor sports activities used RDP support to purchase equipment and respond to increasing demand for adventure tourism.



[The Gap Arts Festival](#) [2]

Keywords:

Culture, LEADER/CLLD, Local Development Strategy, Rural proofing

Countries:

Ireland

A LEADER measure grant helped purchase film and photography equipment and training for a rural arts festival community project.



[Caherconnell Archaeology Field School](#) [3]

Keywords:

Culture, LEADER/CLLD, Tourism, Vocational training & skills acquisition

Countries:

Ireland

LEADER funding enabled the purchase of specialist equipment for training students in the use of modern and sophisticated archaeological surveying techniques.



**MIKRO
FONDEN**
Västernorrland

[Setting up a micro-fund in Västernorrland](#) ^[4]

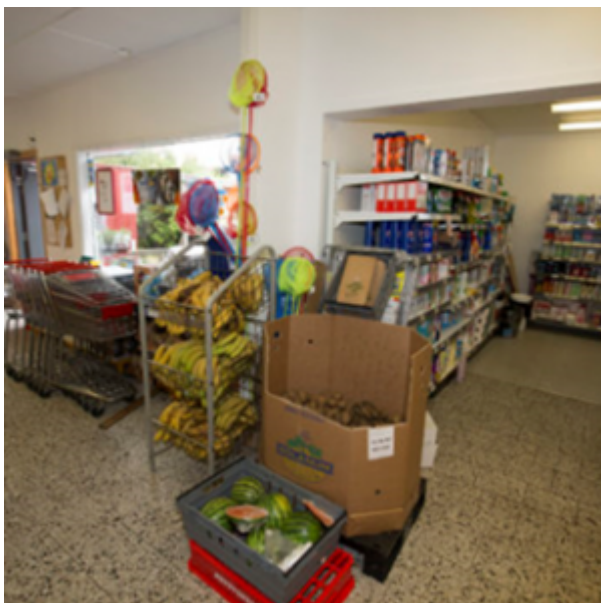
Keywords:

Financial Instruments, LEADER/CLLD, Rural business, Rural SMEs

Countries:

Sweden

Setting up a micro-fund as an alternative way to provide guarantees or loans for small, local organisations.



Café and kitchen at the village shop on Dyrön [5]

Keywords:

Job creation, LEADER/CLLD, Rural SMEs, Tourism

Countries:

Sweden

A very small island in Sweden used EAFRD support to broaden the range of services offered by a village shop by building a café area and a kitchen.



Small projects - great leverage [6]

Keywords:

LEADER/CLLD, Rural business, Rural SMEs

Countries:

Sweden

LAG-owned projects in Sweden are used to allow small seed-funding for specific purposes.



Local capital [7]

Keywords:

Financial Instruments, LEADER/CLLD, Rural business, Rural SMEs

Countries:

Sweden

Establishing a totally new and innovative crowd-sourcing concept combined with a local financial intermediary.

Source URL:

https://enrd.ec.europa.eu/projects-practice/_en?project_keywords_filter=19753&project_country=All&field_enrd_prj_measure_tid=All&field_enrd_prj_focus_area_tid=All&field_enrd_prj_keywords%3A20479&sm_enrd_eu_countries%3AFrance&field_enrd_prj_keywords%3A19754&field_enrd_prj_keywords%3A19737&field_enrd_prj_keywords%3A19744&field_enrd_prj_keywords%3A19760&sm_enrd_eu_countries%3APortugal&sm_enrd_eu_countries%3AIreland&field_enrd_prj_keywords%3A20533&field_enrd_prj_keywords%3A19746&field_enrd_prj_focus_area%3A17128&sm_enrd_eu_countries%3ASweden

Links

- [1] https://enrd.ec.europa.eu/projects-practice/mid-ireland-adventure_en
- [2] https://enrd.ec.europa.eu/projects-practice/gap-arts-festival_en
- [3] https://enrd.ec.europa.eu/projects-practice/caherconnell-archaeology-field-school_en
- [4] https://enrd.ec.europa.eu/projects-practice/setting-micro-fund-vasternorrland_en
- [5] https://enrd.ec.europa.eu/projects-practice/caf e-and-kitchen-village-shop-dyron_en
- [6] https://enrd.ec.europa.eu/projects-practice/small-projects-great-leverage_en
- [7] https://enrd.ec.europa.eu/projects-practice/local-capital_en