

Search

Total results: 3.



Green Care - Where people flourish - Austria ^[1]

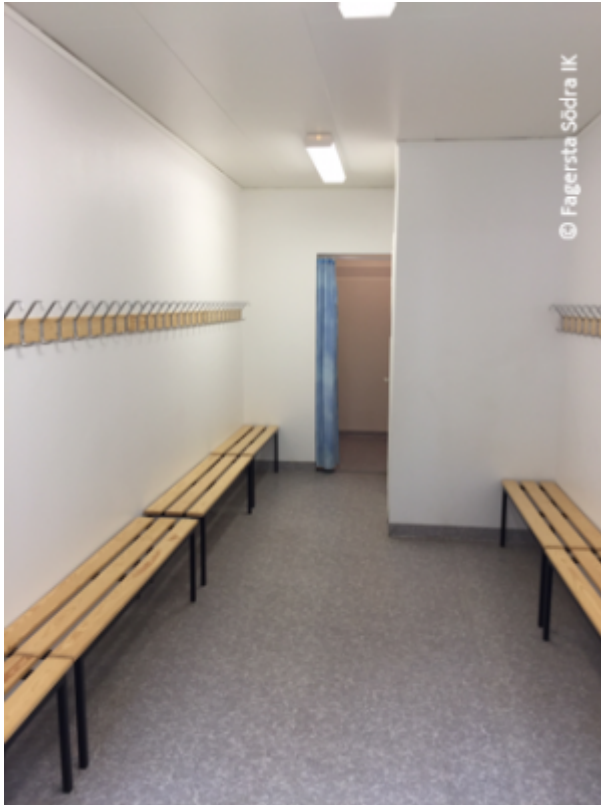
Keywords:

Agriculture, Cooperation, Diversification, Healthcare, Rural Inspiration Awards: nominees, Social inclusion

Countries:

Austria

Green Care projects on family farms offer social services close to home in rural areas. They increase the quality of life for people, secure and create jobs while also helping to preserve small-scale agriculture and forestry.



Fagersta Södra - supporting immigrants integration [2]

Keywords:

Demography, Migrants, Social inclusion, Youth

Countries:

Sweden

A sports club used RDP support to renovate its facilities and offer a space that contributes to the integration of immigrants in the local society.



Promoting soft mobility with an extended cycling lane on

[the Selestat vineyard](#) [3]

Keywords:

Climate change adaptation, Environmental protection, Environmental sustainability, LEADER/CLLD, Tourism

Countries:

France

Investing in extending a cycle lane to promote soft mobility in the commute to work or the school run, as well as for leisure.

Source URL:

https://enrd.ec.europa.eu/projects-practice/_en?project_keywords_filter=19753&project_country=All&field_enrd_prj_measure_tid=All&field_enrd_prj_focus_area_tid=All&field_enrd_prj_keywords%3A20461&field_enrd_prj_keywords%3A20509&field_enrd_prj_keywords%3A19726&field_enrd_prj_keywords%3A19731&field_enrd_prj_keywords%3A19725&field_enrd_prj_keywords%3A19730&field_enrd_prj_keywords%3A19757&field_enrd_prj_keywords%3A19759&field_enrd_prj_keywords%3A20509&field_enrd_prj_keywords%3A20463&field_enrd_prj_keywords%3A17107

Links

[1] https://enrd.ec.europa.eu/projects-practice/green-care-where-people-flourish-austria_en

[2] https://enrd.ec.europa.eu/projects-practice/fagersta-sodra-supporting-immigrants-integration_en

[3] https://enrd.ec.europa.eu/projects-practice/promoting-soft-mobility-extended-cycling-lane-selestat-vineyard_en