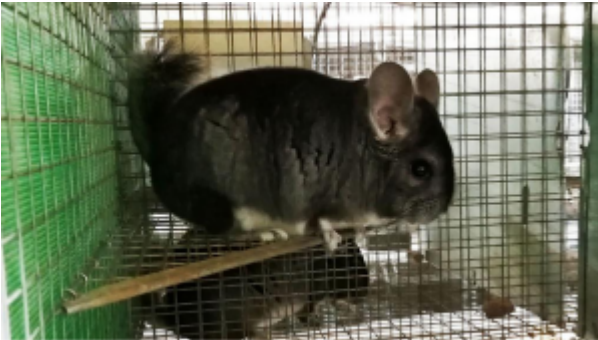


Search

Total results: 23.



© Szilvia Lencse Family farm

## **Establishment of a chinchilla farm** <sup>[1]</sup>

Keywords:

Competitiveness, Entrepreneurship, Family farming, Farm restructuring/modernisation, Renewable energy, Short supply chains & local markets, Women

Countries:

Hungary

A farmer used CAP funding to start a new chinchilla breeding activity using renewable energy.



## **Agárdi Csóbor Ltd - expanding the production capacity of a family-owned winery** [2]

Keywords:

Agriculture, Competitiveness, Entrepreneurship, Family farming, Farm restructuring/modernisation, Job creation, Renewable energy

Countries:

Hungary

A family-owned winery used support from the Hungarian Rural Development Programme (RDP) to increase its production capacity and improve its energy efficiency.



## **Majsai Horticulture Ltd - construction of greenhouses and the introduction of modern technologies** [3]

Keywords:

Agriculture, Competitiveness, Entrepreneurship, Environmental protection, Farm restructuring/modernisation, Irrigation, Job creation

Countries:

Hungary

A family farm used investment support from the Hungarian Rural Development Programme (RDP) to improve its competitiveness in the horticultural sector in Hungary.



## **Establishment of a cheese workshop** [4]

Keywords:

Competitiveness, Entrepreneurship, Family farming, Farm restructuring/modernisation, Job creation, Women, Young farmers

Countries:

Hungary

Support for setting up young farmers and adding value to agricultural products in processing enabled a young entrepreneur to set up her own family business on producing artisanal dairy products.



## **Environmentally friendly development of a family farm** [5]

Keywords:

Agriculture, Animal husbandry, Competitiveness, Entrepreneurship, Environmental protection, Family farming, Organic farming, Product quality

Countries:

Hungary

A family farm used support from multiple Rural Development Programme (RDP) measures to ensure the farm's viability and diversify towards a quality focused and profit-oriented business.



## **Purchase of a new tractor by a wine producing family farm** [6]

Keywords:

Agriculture, Competitiveness, Entrepreneurship, Environmental protection, Family farming, Farm restructuring/modernisation, Job creation

Countries:

Croatia

A family farm specialised on wine production used RDP support to acquire a new tractor and in this way improve its productivity and competitiveness.



## **Expansion & modernisation of a sheep farm** [7]

Keywords:

Animal husbandry, Competitiveness, Entrepreneurship, Job creation, Organic farming

Countries:

Bulgaria

A market-driven investment to increase a sheep farm's competitiveness, through the intensification of high quality organic milk production.



## **Booij & Brandwijk cheese development** [8]

Keywords:

Added value, Animal husbandry, Competitiveness, Diversification, Entrepreneurship, Farm restructuring/modernisation, Product quality

Countries:

The Netherlands

A cheese-producing farm used RDP support to set up a new plant for producing speciality cheeses and ensure its long-term financial sustainability.



## [Land Consolidation in St. Martin Wingertsberg's vineyards](#) [9]

Keywords:

Agriculture, Environmental protection, Farm restructuring/modernisation, Protected areas, Sustainability, Tourism

Countries:

Germany

A land consolidation project helped restore the functionality of vineyard terraces and thus maintained a landscape which is a habitat of rare species.



## [Investing in a unit for processing, pasteurisation and storage of liquid eggs](#) [10]

Keywords:

Added value, Animal husbandry, Competitiveness, Diversification, Entrepreneurship, Farm

restructuring/modernisation, Job creation, Rural business

Countries:

Bulgaria

A modern hen farm producing eggs for human consumption, set up a new unit to process non commercial eggs and therefore increase its competitiveness.

## Pages

[1](#)

[2](#) [11]

[3](#) [12]

[next >](#) [11]

[last »](#) [12]

---

### Source URL:

[https://enrd.ec.europa.eu/projects-practice/\\_en?project\\_keywords\\_filter=19753&project\\_country=All&field\\_enrd\\_prj\\_measure\\_tid=All&field\\_enrd\\_prj\\_focus\\_area\\_tid=All&field\\_enrd\\_prj\\_keywords%3A20461&field\\_enrd\\_prj\\_keywords%3A19755&field\\_enrd\\_prj\\_keywords%3A19720&field\\_enrd\\_prj\\_focus\\_area%3A17115&sm\\_enrd\\_eu\\_countries%3AGermany&field\\_enrd\\_prj\\_keywords%3A19721&sm\\_enrd\\_eu\\_countries%3AEstonia&field\\_enrd\\_prj\\_keywords%3A19755&field\\_enrd\\_prj\\_measure%3A17095&sm\\_enrd\\_eu\\_countries%3ASweden&field\\_enrd\\_prj\\_keywords%3A19744&sm\\_enrd\\_eu\\_countries%3ABulgaria&field\\_enrd\\_eu\\_countries%3AThe%20Netherlands&field\\_enrd\\_prj\\_keywords%3A20466&field\\_enrd\\_eu\\_countries%3ACroatia&field\\_enrd\\_eu\\_countries%3AHungary&field\\_enrd\\_prj\\_keywords%3A19731](https://enrd.ec.europa.eu/projects-practice/_en?project_keywords_filter=19753&project_country=All&field_enrd_prj_measure_tid=All&field_enrd_prj_focus_area_tid=All&field_enrd_prj_keywords%3A20461&field_enrd_prj_keywords%3A19755&field_enrd_prj_keywords%3A19720&field_enrd_prj_focus_area%3A17115&sm_enrd_eu_countries%3AGermany&field_enrd_prj_keywords%3A19721&sm_enrd_eu_countries%3AEstonia&field_enrd_prj_keywords%3A19755&field_enrd_prj_measure%3A17095&sm_enrd_eu_countries%3ASweden&field_enrd_prj_keywords%3A19744&sm_enrd_eu_countries%3ABulgaria&field_enrd_eu_countries%3AThe%20Netherlands&field_enrd_prj_keywords%3A20466&field_enrd_eu_countries%3ACroatia&field_enrd_eu_countries%3AHungary&field_enrd_prj_keywords%3A19731)

### Links

[1] [https://enrd.ec.europa.eu/projects-practice/establishment-chinchilla-farm\\_en](https://enrd.ec.europa.eu/projects-practice/establishment-chinchilla-farm_en)

[2]

[https://enrd.ec.europa.eu/projects-practice/agardi-csobor-ltd-expanding-production-capacity-family-owned-winery\\_en](https://enrd.ec.europa.eu/projects-practice/agardi-csobor-ltd-expanding-production-capacity-family-owned-winery_en)

[3]

[https://enrd.ec.europa.eu/projects-practice/majsai-horticulture-ltd-construction-greenhouses-and-introduction-modern\\_en](https://enrd.ec.europa.eu/projects-practice/majsai-horticulture-ltd-construction-greenhouses-and-introduction-modern_en)

[4] [https://enrd.ec.europa.eu/projects-practice/establishment-cheese-workshop\\_en](https://enrd.ec.europa.eu/projects-practice/establishment-cheese-workshop_en)

[5] [https://enrd.ec.europa.eu/projects-practice/environmentally-friendly-development-family-farm\\_en](https://enrd.ec.europa.eu/projects-practice/environmentally-friendly-development-family-farm_en)

[6] [https://enrd.ec.europa.eu/projects-practice/purchase-new-tractor-wine-producing-family-farm\\_en](https://enrd.ec.europa.eu/projects-practice/purchase-new-tractor-wine-producing-family-farm_en)

[7] [https://enrd.ec.europa.eu/projects-practice/expansion-modernisation-sheep-farm\\_en](https://enrd.ec.europa.eu/projects-practice/expansion-modernisation-sheep-farm_en)

[8] [https://enrd.ec.europa.eu/projects-practice/booij-brandwijk-cheese-development\\_en](https://enrd.ec.europa.eu/projects-practice/booij-brandwijk-cheese-development_en)

[9] [https://enrd.ec.europa.eu/projects-practice/land-consolidation-st-martin-wingertsbergs-vineyards\\_en](https://enrd.ec.europa.eu/projects-practice/land-consolidation-st-martin-wingertsbergs-vineyards_en)

[10] [https://enrd.ec.europa.eu/projects-practice/investing-unit-processing-pasteurisation-and-storage-liquid-eggs\\_en](https://enrd.ec.europa.eu/projects-practice/investing-unit-processing-pasteurisation-and-storage-liquid-eggs_en)

[11]

[https://enrd.ec.europa.eu/projects-practice/\\_en?page=1&project\\_keywords\\_filter=19753&project\\_country=All&field\\_enrd\\_prj\\_measure\\_tid=All&field\\_enrd\\_prj\\_focus\\_area\\_tid=All&field\\_enrd\\_prj\\_keywords%3A20461&field\\_enrd\\_prj\\_keywords%3A19755&field\\_enrd\\_prj\\_keywords%3A19720&field\\_enrd\\_prj\\_focus\\_area%3A17115&sm\\_enrd\\_eu\\_countries%3AGermany&field\\_enrd\\_prj\\_keywords%3A19721&sm\\_enrd\\_eu\\_countries%3AEstonia&field\\_enrd\\_prj\\_keywords%3A19755&field\\_enrd\\_prj\\_measure%3A17095&sm\\_enrd\\_eu\\_countries%3ASweden&field\\_enrd\\_prj\\_keywords%3A19744&sm\\_enrd\\_eu\\_countries%3ABulgaria&field\\_enrd\\_eu\\_countries%3AThe%20Netherlands&field\\_enrd\\_prj\\_keywords%3A20466&field\\_enrd\\_eu\\_countries%3ACroatia&field\\_enrd\\_eu\\_countries%3AHungary&field\\_enrd\\_prj\\_keywords%3A19731](https://enrd.ec.europa.eu/projects-practice/_en?page=1&project_keywords_filter=19753&project_country=All&field_enrd_prj_measure_tid=All&field_enrd_prj_focus_area_tid=All&field_enrd_prj_keywords%3A20461&field_enrd_prj_keywords%3A19755&field_enrd_prj_keywords%3A19720&field_enrd_prj_focus_area%3A17115&sm_enrd_eu_countries%3AGermany&field_enrd_prj_keywords%3A19721&sm_enrd_eu_countries%3AEstonia&field_enrd_prj_keywords%3A19755&field_enrd_prj_measure%3A17095&sm_enrd_eu_countries%3ASweden&field_enrd_prj_keywords%3A19744&sm_enrd_eu_countries%3ABulgaria&field_enrd_eu_countries%3AThe%20Netherlands&field_enrd_prj_keywords%3A20466&field_enrd_eu_countries%3ACroatia&field_enrd_eu_countries%3AHungary&field_enrd_prj_keywords%3A19731)

Bulgaria&f%5B10%5D=sm\_enrd\_eu\_countries%3AThe%20Netherlands&f%5B11%5D=im\_field\_enrd\_prj\_key  
words%3A20466&f%5B12%5D=sm\_enrd\_eu\_countries%3ACroatia&f%5B13%5D=sm\_enrd\_eu\_countries%3A  
Hungary&f%5B14%5D=im\_field\_enrd\_prj\_keywords%3A19731  
[12]

[https://enrd.ec.europa.eu/projects-practice/\\_en?page=2&project\\_keywords\\_filter=19753&project\\_country=All&field\\_enrd\\_prj\\_measure\\_tid=All&field\\_enrd\\_prj\\_focus\\_area\\_tid=All&f%5B0%5D=im\\_field\\_enrd\\_prj\\_keywords%3A20461&f%5B0%5D=im\\_field\\_enrd\\_prj\\_keywords%3A19755&f%5B0%5D=im\\_field\\_enrd\\_prj\\_keywords%3A19720&f%5B1%5D=im\\_field\\_enrd\\_prj\\_focus\\_area%3A17115&f%5B2%5D=sm\\_enrd\\_eu\\_countries%3AGermany&f%5B3%5D=im\\_field\\_enrd\\_prj\\_keywords%3A19721&f%5B4%5D=sm\\_enrd\\_eu\\_countries%3AEstonia&f%5B5%5D=im\\_field\\_enrd\\_prj\\_keywords%3A19755&f%5B6%5D=im\\_field\\_enrd\\_prj\\_measure%3A17095&f%5B7%5D=sm\\_enrd\\_eu\\_countries%3ASweden&f%5B8%5D=im\\_field\\_enrd\\_prj\\_keywords%3A19744&f%5B9%5D=sm\\_enrd\\_eu\\_countries%3ABulgaria&f%5B10%5D=sm\\_enrd\\_eu\\_countries%3AThe%20Netherlands&f%5B11%5D=im\\_field\\_enrd\\_prj\\_key words%3A20466&f%5B12%5D=sm\\_enrd\\_eu\\_countries%3ACroatia&f%5B13%5D=sm\\_enrd\\_eu\\_countries%3A Hungary&f%5B14%5D=im\\_field\\_enrd\\_prj\\_keywords%3A19731](https://enrd.ec.europa.eu/projects-practice/_en?page=2&project_keywords_filter=19753&project_country=All&field_enrd_prj_measure_tid=All&field_enrd_prj_focus_area_tid=All&f%5B0%5D=im_field_enrd_prj_keywords%3A20461&f%5B0%5D=im_field_enrd_prj_keywords%3A19755&f%5B0%5D=im_field_enrd_prj_keywords%3A19720&f%5B1%5D=im_field_enrd_prj_focus_area%3A17115&f%5B2%5D=sm_enrd_eu_countries%3AGermany&f%5B3%5D=im_field_enrd_prj_keywords%3A19721&f%5B4%5D=sm_enrd_eu_countries%3AEstonia&f%5B5%5D=im_field_enrd_prj_keywords%3A19755&f%5B6%5D=im_field_enrd_prj_measure%3A17095&f%5B7%5D=sm_enrd_eu_countries%3ASweden&f%5B8%5D=im_field_enrd_prj_keywords%3A19744&f%5B9%5D=sm_enrd_eu_countries%3ABulgaria&f%5B10%5D=sm_enrd_eu_countries%3AThe%20Netherlands&f%5B11%5D=im_field_enrd_prj_key<br/>words%3A20466&f%5B12%5D=sm_enrd_eu_countries%3ACroatia&f%5B13%5D=sm_enrd_eu_countries%3A<br/>Hungary&f%5B14%5D=im_field_enrd_prj_keywords%3A19731)