

Search

Total results: 6.



## [\*\*Pecivarne Liptovsky Hradok Ltd. - Confectionary manufacturer invests in modern production equipment\*\*](#) <sup>[1]</sup>

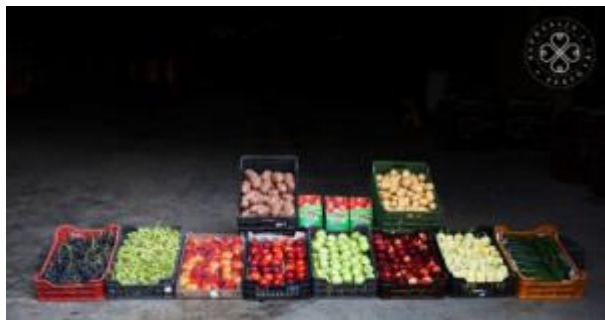
Keywords:

Competitiveness, Entrepreneurship, Job creation, Product quality, Rural business

Countries:

Slovakia

A Slovakian company with a long history of manufacturing confectionery products benefited from Rural Development Programme support to modernise its equipment and production processes.



## [Setting up an environmentally friendly fruit juice production plant](#) [2]

Keywords:

Agriculture, Entrepreneurship, Family farming, Job creation, Product quality, Renewable energy

Countries:

Hungary

Setting up a fruit juice processing plant that operates with renewable energy.



## [Introducing a new technology for innovative processing of soybean](#) [3]

Keywords:

Agriculture, Bioeconomy, Entrepreneurship, Innovation, Job creation, Product quality

Countries:

Slovakia

Support from the rural development programme was used to establish an innovative production of GMO-free soybean oil products of superior quality.



## **Restoring a historic chateau to create a modern winery** [4]

Keywords:

Competitiveness, Entrepreneurship, Food & Drink, Job creation, Product quality, Tourism

Countries:

Slovakia

A historic Chateau was restored to its initial state and turned into one of the most modern wine-producing facilities in Slovakia.



## **Bakery Hrinova - Investments to increase the competitiveness of a bakery business** [5]

Keywords:

Added value, Competitiveness, Entrepreneurship, Job creation, Product quality

Countries:

Slovakia

The Slovakian rural development programme supported a high-quality bakery business in its efforts to increase production capacity and profitability.



## [Lebecco s.r.o. - Expanding the production capacity of a bakery company](#) [6]

Keywords:

Farm restructuring/modernisation, Food & Drink, Job creation, Product quality, Rural business

Countries:

Slovakia

A bakery company producing high quality traditional bakery products used support from the rural development programme to modernise and expand its production capacity.

---

### Source URL:

[https://enrd.ec.europa.eu/projects-practice/\\_en?project\\_keywords\\_filter=19753&amp%3Bamp%3Bproject\\_country=All&amp%3Bamp%3Bfield\\_enrd\\_prj\\_measure\\_tid=All&amp%3Bamp%3Bfield\\_enrd\\_prj\\_focus\\_area\\_tid=All&amp%3Bamp%3Bf%5B0%5D=im\\_field\\_enrd\\_prj\\_focus\\_area%3A17124&amp%3Bf%5B0%5D=sm\\_enrd\\_eu\\_countries%3ABulgaria&f%5B0%5D=im\\_field\\_enrd\\_prj\\_keywords%3A19759&f%5B1%5D=im\\_field\\_enrd\\_prj\\_keywords%3A19726&f%5B2%5D=im\\_field\\_enrd\\_prj\\_keywords%3A20474&f%5B3%5D=im\\_field\\_enrd\\_prj\\_keywords%3A19719&f%5B4%5D=im\\_field\\_enrd\\_prj\\_keywords%3A20473&f%5B5%5D=im\\_field\\_enrd\\_prj\\_focus\\_area%3A17117&f%5B6%5D=im\\_field\\_enrd\\_prj\\_keywords%3A19739&f%5B7%5D=im\\_field\\_enrd\\_prj\\_keywords%3A20477&f%5B8%5D=im\\_field\\_enrd\\_prj\\_keywords%3A19718&f%5B9%5D=sm\\_enrd\\_eu\\_countries%3ASlovakia&f%5B10%5D=im\\_field\\_enrd\\_prj\\_measure%3A17095&f%5B11%5D=im\\_field\\_enrd\\_prj\\_keywords%3A20466&f%5B12%5D=im\\_field\\_enrd\\_prj\\_keywords%3A20476&f%5B13%5D=im\\_field\\_enrd\\_prj\\_keywords%3A19720&f%5B14%5D=im\\_field\\_enrd\\_prj\\_keywords%3A20469&f%5B15%5D=sm\\_enrd\\_eu\\_countries%3AHungary](https://enrd.ec.europa.eu/projects-practice/_en?project_keywords_filter=19753&amp%3Bamp%3Bproject_country=All&amp%3Bamp%3Bfield_enrd_prj_measure_tid=All&amp%3Bamp%3Bfield_enrd_prj_focus_area_tid=All&amp%3Bamp%3Bf%5B0%5D=im_field_enrd_prj_focus_area%3A17124&amp%3Bf%5B0%5D=sm_enrd_eu_countries%3ABulgaria&f%5B0%5D=im_field_enrd_prj_keywords%3A19759&f%5B1%5D=im_field_enrd_prj_keywords%3A19726&f%5B2%5D=im_field_enrd_prj_keywords%3A20474&f%5B3%5D=im_field_enrd_prj_keywords%3A19719&f%5B4%5D=im_field_enrd_prj_keywords%3A20473&f%5B5%5D=im_field_enrd_prj_focus_area%3A17117&f%5B6%5D=im_field_enrd_prj_keywords%3A19739&f%5B7%5D=im_field_enrd_prj_keywords%3A20477&f%5B8%5D=im_field_enrd_prj_keywords%3A19718&f%5B9%5D=sm_enrd_eu_countries%3ASlovakia&f%5B10%5D=im_field_enrd_prj_measure%3A17095&f%5B11%5D=im_field_enrd_prj_keywords%3A20466&f%5B12%5D=im_field_enrd_prj_keywords%3A20476&f%5B13%5D=im_field_enrd_prj_keywords%3A19720&f%5B14%5D=im_field_enrd_prj_keywords%3A20469&f%5B15%5D=sm_enrd_eu_countries%3AHungary)

### Links

- [1] [https://enrd.ec.europa.eu/projects-practice/pecivarne-liptovsky-hradok-ltd-confectionary-manufacturer-invests-modern\\_en](https://enrd.ec.europa.eu/projects-practice/pecivarne-liptovsky-hradok-ltd-confectionary-manufacturer-invests-modern_en)
- [2] [https://enrd.ec.europa.eu/projects-practice/setting-environmentally-friendly-fruit-juice-production-plant\\_en](https://enrd.ec.europa.eu/projects-practice/setting-environmentally-friendly-fruit-juice-production-plant_en)
- [3] [https://enrd.ec.europa.eu/projects-practice/introducing-new-technology-innovative-processing-soybean\\_en](https://enrd.ec.europa.eu/projects-practice/introducing-new-technology-innovative-processing-soybean_en)
- [4] [https://enrd.ec.europa.eu/projects-practice/restoring-historic-chateau-create-modern-winery\\_en](https://enrd.ec.europa.eu/projects-practice/restoring-historic-chateau-create-modern-winery_en)
- [5] [https://enrd.ec.europa.eu/projects-practice/bakery-hrinova-investments-increase-competitiveness-bakery-business\\_en](https://enrd.ec.europa.eu/projects-practice/bakery-hrinova-investments-increase-competitiveness-bakery-business_en)
- [6] [https://enrd.ec.europa.eu/projects-practice/lebecco-sro-expanding-production-capacity-bakery-company\\_en](https://enrd.ec.europa.eu/projects-practice/lebecco-sro-expanding-production-capacity-bakery-company_en)