

Search

Total results: 13.



[Setting up a micro-fund in Västernorrland](#) ^[1]

Keywords:

Financial Instruments, LEADER/CLLD, Rural business, Rural SMEs

Countries:

Sweden

Setting up a micro-fund as an alternative way to provide guarantees or loans for small, local organisations.



VÅTMARK KYLINGE - Creating a wetland to tackle eutrophication [2]

Keywords:

Agriculture, Biodiversity, Climate change adaptation, Water management

Countries:

Sweden

The creation of wetlands in the agricultural landscape can contribute in decreasing the leakage of nutrients into water bodies.



Upscaling a confectionary and patisserie workshop in rural Romania [3]

Keywords:

Competitiveness, Product quality, Rural business, Rural SMEs

Countries:

Romania

Financed by the Romanian rural development programme, a small patisserie and confectionary workshop upscaled its business by constructing a new building to increase its production capacity and offer utility areas to customers.



Business Development for Women - tailored support for female rural entrepreneurs [4]

Keywords:

Rural SMEs, Vocational training & skills acquisition, Women

Countries:

Sweden

Business Development for Women' provided a business training programme to 60 women, giving them the knowledge and skills necessary to create a business plan for developing their rural business.



Green arena [5]

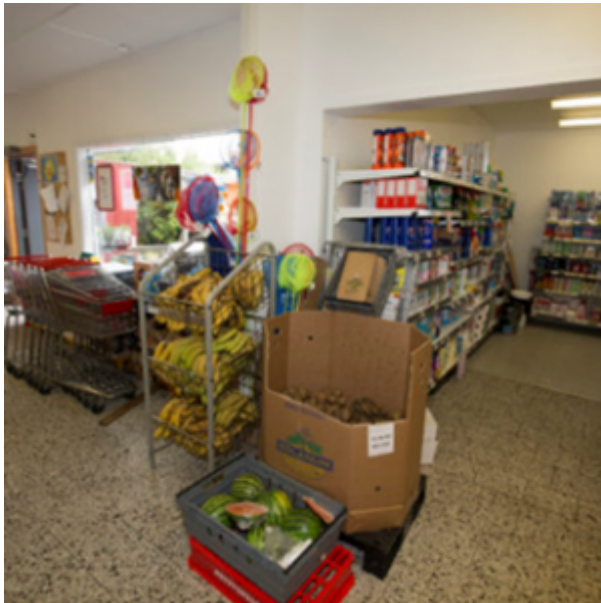
Keywords:

Diversification, Education & lifelong learning, Healthcare, Rural SMEs

Countries:

Sweden

On farm care is a new type of service which can help farms diversify while significantly contributing to a more natural rehabilitation process for people in need.



[Café and kitchen at the village shop on Dyrön](#) [6]

Keywords:

Job creation, LEADER/CLLD, Rural SMEs, Tourism

Countries:

Sweden

A very small island in Sweden used EAFRD support to broaden the range of services offered by a village shop by building a café area and a kitchen.



[Installing water, sewage and other infrastructure in rural Romania](#) [7]

Keywords:

Job creation, Rural services, Social services

Countries:

Romania

A commune in Transylvania used EAFRD support to connect homes to a water and sewage network as well as other key infrastructure.



Acquisition of equipment for veterinary laboratory [8]

Keywords:

Animal husbandry, Animal welfare, Rural services, Rural SMEs

Countries:

Romania

A young and dynamic team of veterinary sector experts received EAFRD support to establish a private laboratory offering high quality veterinary services to farmers.



Expanding the distribution of bakery products [9]

Keywords:

Local food, Rural SMEs, Short supply chains & local markets

Countries:

Romania

A company producing bread and pastry products used EAFRD support to expand its processing and storage capacity as well as its distribution network.



[Water preservation project 'AQUABRAVA'](#) [10]

Keywords:

Biodiversity, Climate change adaptation, Cooperation, Water management

Countries:

Sweden

This LEADER-funded project created several small wetlands and helped raise awareness of and interest in water protection among landowners. It also contributed to increasing the amount of available water in the island of Gotland.

Pages

1

[2](#) [11]

[next >](#) [11]

[last »](#) [11]

Source URL:

https://enrd.ec.europa.eu/projects-practice/_en?project_keywords_filter=19753&project_country=All&field_enrd_prj_measure_tid=All&field_enrd_prj_focus_area_tid=All&im_field_enrd_prj_focus_area%3A17124&sm_enrd_eu_countries%3AAustria&im_field_enrd_prj_keywords%3A19757&sm_enrd_eu_countries%3ARomania&im_field_enrd_prj_keywords%3A19754&sm_enrd_eu_countries%3ASweden

ords%3A19723

Links

[1] https://enrd.ec.europa.eu/projects-practice/setting-micro-fund-vasternorrland_en

[2] https://enrd.ec.europa.eu/projects-practice/vatmark-kylinge-creating-wetland-tackle-eutrophication_en

[3] https://enrd.ec.europa.eu/projects-practice/upscaling-confectionary-and-patisserie-workshop-rural-romania_en

[4] https://enrd.ec.europa.eu/projects-practice/business-development-women-tailored-support-female-rural-entrepreneurs_en

[5] https://enrd.ec.europa.eu/projects-practice/green-arena_en

[6] https://enrd.ec.europa.eu/projects-practice/cafe-and-kitchen-village-shop-dyron_en

[7] https://enrd.ec.europa.eu/projects-practice/installing-water-sewage-and-other-infrastructure-rural-romania_en

[8] https://enrd.ec.europa.eu/projects-practice/acquisition-equipment-veterinary-laboratory_en

[9] https://enrd.ec.europa.eu/projects-practice/expanding-distribution-bakery-products_en

[10] https://enrd.ec.europa.eu/projects-practice/water-preservation-project-aquabrava_en

[11]

https://enrd.ec.europa.eu/projects-practice/_en?page=1&project_keywords_filter=19753&project_country=All&field_enrd_prj_measure_tid=All&field_enrd_prj_focus_area_tid=All&im_field_enrd_prj_focus_area%3A17124&sm_enrd_eu_countries%3AAustria&im_field_enrd_prj_keywords%3A19757&sm_enrd_eu_countries%3ARomania&im_field_enrd_prj_keywords%3A19754&sm_enrd_eu_countries%3ASweden&im_field_enrd_prj_keywords%3A19723