

Search

Total results: 24.



Modernisation - relocation of “Monemvasia Winery, G. Tsibidis & Co” ^[1]

Keywords:

Entrepreneurship, LEADER/CLLD, Product quality, Rural SMEs

Countries:

Greece

EAFRD funding enabled the Monemvasia Winery to relocate to meet growing demand for Monemvasia-Malvasia wine.



Treak Cliff Cavern ^[2]

Keywords:

Competitiveness, Entrepreneurship, Farm restructuring/modernisation, Job creation, Rural

business, Rural SMEs, Tourism

Countries:

United Kingdom

A project to enhance the facilities on a geological site, enable new visitor-based activities and attract more visitors who will spend more time in the area.



[GrowBiz - Enterprising Rural Perthshire](#) [3]

Keywords:

Entrepreneurship, LEADER/CLLD, Rural business, Rural Inspiration Awards: nominees, Rural SMEs

Countries:

United Kingdom

The GrowBiz approach to enterprise support is based on building long-term relationships with businesses and encouraging them to connect, collaborate, share and network with other enterprises in their local community and further afield.



[Mid Ireland Adventure](#) [4]

Keywords:

Entrepreneurship, Job creation, LEADER/CLLD, Rural Inspiration Awards: nominees, Rural SMEs, Tourism

Countries:

Ireland

A start-up company specialising in outdoor sports activities used RDP support to purchase equipment and respond to increasing demand for adventure tourism.



[Tuffery jeans - a rural tailor shop 2.0](#) [5]

Keywords:

LEADER/CLLD, Rural business, Rural SMEs

Countries:

France

A family business, with a long-standing tradition of producing denim clothing, used support from the LEADER measure to establish a modern workshop and increase its share in domestic and international markets.



Hallegaard Slaughterhouse [6]

Keywords:

Added value, Animal husbandry, Cooperation, Entrepreneurship, Job creation, LEADER/CLLD, Market development, Product quality, Rural business

Countries:

Denmark

A slaughterhouse was established on the island of Bornholm to offer slaughtering facilities to small husbandry farms or for larger herds of sheep or cattle.



The small islands of Denmark - tourist destinations of high quality [7]

Keywords:

Cooperation, Entrepreneurship, Inter-territorial/Transnational cooperation, Job creation, LEADER/CLLD, Market development, Rural business, Tourism

Countries:

Denmark

A rural business development and capacity building project with an emphasis on increasing revenue in the small-islands tourism industry of Denmark.



Pop-up shops to revitalise a town's city centre [8]

Keywords:

Entrepreneurship, Innovation, Job creation, LEADER/CLLD, Rural business, Rural SMEs

Countries:

Austria

An innovative concept to revitalise the city centre of an Austrian town by offering flexible rental options to pop up shops.



Nature and outdoor tourism - cooperation and networking for local business [9]

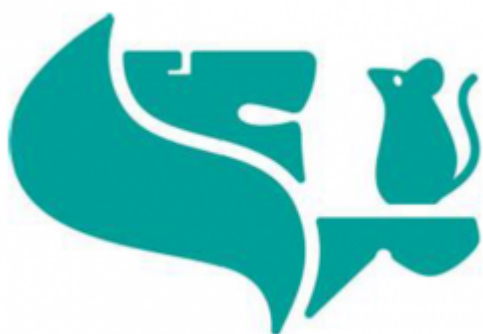
Keywords:

Cooperation, LEADER/CLLD, Networking, Rural business, Tourism

Countries:

Sweden

In order to take advantage of the enormous potential of outdoor tourism, fostering cooperation and networking among the local actors is essential.



MIKRO FONDEN

Västernorrland

[Setting up a micro-fund in Västernorrland](#) ^[10]

Keywords:

Financial Instruments, LEADER/CLLD, Rural business, Rural SMEs

Countries:

Sweden

Setting up a micro-fund as an alternative way to provide guarantees or loans for small, local organisations.

Pages

[1](#)

[2](#) ^[11]

[3](#) ^[12]

[next >](#) ^[11]

[last »](#) ^[12]

Source URL:

https://enrd.ec.europa.eu/projects-practice/_en?project_keywords_filter=19753&project_country=All&field_enrd_prj_measure_tid=All&field_enrd_prj_focus_area_tid=All&field_enrd_prj_focus_area%3A17124&field_enrd_prj_focus_area%3A1711

6&f%5B0%5D=im_field_enrd_prj_focus_area%3A17128&f%5B1%5D=im_field_enrd_prj_keywords%3A19726&f%5B2%5D=im_field_enrd_prj_keywords%3A19754

Links

[1] https://enrd.ec.europa.eu/projects-practice/modernisation-relocation-monemvasia-winery-g-tsibidis-co_en

[2] https://enrd.ec.europa.eu/projects-practice/treak-cliff-cavern_en

[3] https://enrd.ec.europa.eu/projects-practice/growbiz-enterprising-rural-perthshire_en

[4] https://enrd.ec.europa.eu/projects-practice/mid-ireland-adventure_en

[5] https://enrd.ec.europa.eu/projects-practice/tuffery-jeans-rural-tailor-shop-20_en

[6] https://enrd.ec.europa.eu/projects-practice/hallegaard-slaughterhouse_en

[7] https://enrd.ec.europa.eu/projects-practice/small-islands-denmark-tourist-destinations-high-quality_en

[8] https://enrd.ec.europa.eu/projects-practice/pop-shops-revitalise-towns-city-centre_en

[9]

https://enrd.ec.europa.eu/projects-practice/nature-and-outdoor-tourism-cooperation-and-networking-local-business_en

[10] https://enrd.ec.europa.eu/projects-practice/setting-micro-fund-vasternorrland_en

[11]

https://enrd.ec.europa.eu/projects-practice/_en?page=1&project_keywords_filter=19753&project_country=All&field_enrd_prj_measure_tid=All&field_enrd_prj_focus_area_tid=All&f%5B0%5D=im_field_enrd_prj_focus_area%3A17124&f%5B1%5D=im_field_enrd_prj_focus_area%3A17116&f%5B2%5D=im_field_enrd_prj_focus_area%3A17128&f%5B3%5D=im_field_enrd_prj_keywords%3A19726&f%5B4%5D=im_field_enrd_prj_keywords%3A19754

[12]

https://enrd.ec.europa.eu/projects-practice/_en?page=2&project_keywords_filter=19753&project_country=All&field_enrd_prj_measure_tid=All&field_enrd_prj_focus_area_tid=All&f%5B0%5D=im_field_enrd_prj_focus_area%3A17124&f%5B1%5D=im_field_enrd_prj_focus_area%3A17116&f%5B2%5D=im_field_enrd_prj_focus_area%3A17128&f%5B3%5D=im_field_enrd_prj_keywords%3A19726&f%5B4%5D=im_field_enrd_prj_keywords%3A19754