

Search

Total results: 9.



[Developing the Municipality of Alsódobsza](#) ^[1]

Keywords:

Energy efficiency, Renewable energy, Renewables

Countries:

Hungary

Improving the centre of a small community by replacing the roofs of municipal buildings.



[Company succession in the hotel and hospitality sector in the Northern Eifel region](#) ^[2]

Keywords:

Demography, Entrepreneurship, LEADER/CLLD, Rural business, Tourism

Countries:

Germany

An initiative to sensitise companies in the Northern Eifel region to the problem of management succession at an early stage.

Case Study: LINC - Leader Inspired Network Community [3]

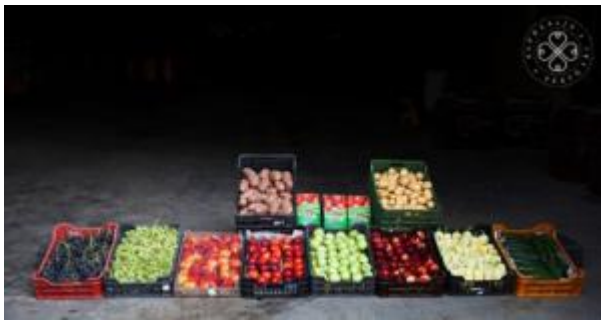
Keywords:

LEADER/CLLD, Methodological examples, Networking, Stakeholder involvement

Countries:

Austria, Estonia, Finland, Germany

LINC stands for Leader Inspired Network Community, an initiative of Local Action Groups and Network Support Units.



Setting up an environmentally friendly fruit juice production plant [4]

Keywords:

Agriculture, Entrepreneurship, Family farming, Job creation, Product quality, Renewable energy

Countries:

Hungary

Setting up a fruit juice processing plant that operates with renewable energy.



Promoting the use of solar energy in local communities [5]

Keywords:

Inter-territorial/Transnational cooperation, Job creation, LEADER/CLLD, Renewable energy

Countries:

Hungary

An innovative interterritorial cooperation project brought together Local Action Groups and other social partners to demonstrate and promote the use of solar energy by local communities.



Producing vegetables in polytunnels using renewable energy [6]

Keywords:

Agriculture, LEADER/CLLD, Organic farming, Renewable energy

Countries:

Hungary

The cost for fossil fuels can be a significant constrain for the operation of a small farm. Reverting into renewable sources of energy such as biomass, can help increase the farm's competitiveness while protecting the environment.



[Improving energy efficiency of communal buildings in a LAG area](#) [7]

Keywords:

Climate change adaptation, Energy efficiency, LEADER/CLLD, Renewable energy

Countries:

Hungary

A local action groups promoted energy efficiency upgrades in the towns of its area and in order to identify good practice examples it cooperated with partner local action groups in Scotland.



[Setting up a renewable energy visitor centre in Feldheim - Germany](#) [8]

Keywords:

Bioeconomy, Climate change adaptation, Energy efficiency, LEADER/CLLD, Renewable energy

Countries:

Germany

RDP funding helped convert a disused building into an inspiring renewable energy visitor centre in Feldheim – Germany’s first village to be supplied with 100 % renewable energy.



[Conservation of natural heritage - Biodiversity and wood fuel](#) [9]

Keywords:

Biodiversity, Bioeconomy, Climate change adaptation, Protected areas, Renewable energy

Countries:

Germany

Testing the transferability of landscape management to other Natura 2000 sites.

Source URL:

https://enrd.ec.europa.eu/projects-practice/_en?project_keywords_filter=19753&project_country=All&field_enrd_prj_measure_tid=All&field_enrd_prj_focus_area_tid=All&im_field_enrd_prj_focus_area%3A17123&sm_enrd_eu_countries%3AMalta&im_field_enrd_prj_keywords%3A19751&sm_enrd_eu_countries%3AGermany&sm_enrd_eu_countries%3AHungary&im_field_enrd_prj_keywords%3A20476&im_field_enrd_prj_keywords%3A20479

Links

[1] https://enrd.ec.europa.eu/projects-practice/developing-municipality-alsodobsza_en

[2]

https://enrd.ec.europa.eu/projects-practice/company-succession-hotel-and-hospitality-sector-northern-eifel-region_en

[3] https://enrd.ec.europa.eu/projects-practice/case-study-linc-leader-inspired-network-community_en

[4] https://enrd.ec.europa.eu/projects-practice/setting-environmentally-friendly-fruit-juice-production-plant_en

[5] https://enrd.ec.europa.eu/projects-practice/promoting-use-solar-energy-local-communities_en

[6] https://enrd.ec.europa.eu/projects-practice/producing-vegetables-polytunnels-using-renewable-energy_en

[7] https://enrd.ec.europa.eu/projects-practice/improving-energy-efficiency-communal-buildings-lag-area_en

[8] https://enrd.ec.europa.eu/projects-practice/setting-renewable-energy-visitor-centre-feldheim-germany_en

[9] https://enrd.ec.europa.eu/projects-practice/conservation-natural-heritage-biodiversity-and-wood-fuel_en