

Search

Total results: 6.



[LEADER Impact Barometer](#) ^[1]

Keywords:

Cooperation, Inter-territorial/Transnational cooperation, LEADER/CLLD, Local Development Strategy, Stakeholder involvement

Countries:

Sweden

Piloting a tool that helps assess the impact potential and necessary points of improvement of LEADER projects, already during the project's application phase.



The advantages of cooler, darker climates [2]

Keywords:

Communication, Entrepreneurship, Information & promotion activities, Innovation, LEADER/CLLD, Tourism

Countries:

Sweden

An association used RDP support to turn the 'disadvantages' of long periods of cold and darkness in northern Sweden, into a unique selling point for tourism.



Nature and outdoor tourism - cooperation and networking for local business [3]

Keywords:

Cooperation, LEADER/CLLD, Networking, Rural business, Tourism

Countries:

Sweden

In order to take advantage of the enormous potential of outdoor tourism, fostering cooperation and networking among the local actors is essential.



[Suderbyn - Community-led development of an ecovillage in Sweden](#) [4]

Keywords:

Bioeconomy, LEADER/CLLD, Nature conservation, Organic farming, Smart Villages, Tourism

Countries:

Sweden

An ecovillage was developed on Sweden's Gotland island using EAFRD funding, providing a model for environmentally-friendly accommodation, waste water treatment, food and energy production. The site is also a template for non-consumerist approaches.



[Exchanging good practices on integrating immigrants in rural areas across the EU](#) [5]

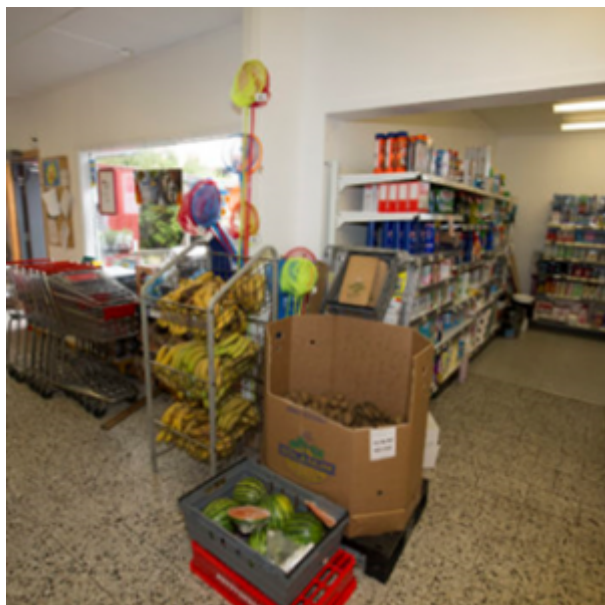
Keywords:

Inter-territorial/Transnational cooperation, LEADER/CLLD, Migrants, Social inclusion

Countries:

Austria, Finland, Sweden

A Finnish NGO used EAFRD funding in a transnational project to exchange and develop best practices for integrating immigrants and refugees in rural areas.



[Café and kitchen at the village shop on Dyrön](#) [6]

Keywords:

Job creation, LEADER/CLLD, Rural SMEs, Tourism

Countries:

Sweden

A very small island in Sweden used EAFRD support to broaden the range of services offered by a village shop by building a café area and a kitchen.

Source URL:

https://enrd.ec.europa.eu/projects-practice/_en?project_keywords_filter=19753&project_country=All&field_enrd_prj_measure_tid=All&field_enrd_prj_focus_area_tid=All&field_enrd_prj_focus_area%3A17123&sm_enrd_eu_countries%3AMalta&field_enrd_prj_keywords%3A19723&field_enrd_prj_keywords%3A20466&field_enrd_prj_keywords%3A19760&sm_enrd_eu_countries%3ASweden&field_enrd_prj_focus_area%3A17128&field_enrd_prj_keywords%3A19759&field_enrd_prj_keywords%3A19740&field_enrd_prj_keywords%3A20473

Links

[1] https://enrd.ec.europa.eu/projects-practice/leader-impact-barometer_en

[2] https://enrd.ec.europa.eu/projects-practice/advantages-cooler-darker-climates_en

[3] https://enrd.ec.europa.eu/projects-practice/nature-and-outdoor-tourism-cooperation-and-networking-local-business_en

[4] https://enrd.ec.europa.eu/projects-practice/suderbyn-community-led-development-ecovillage-sweden_en

[5] https://enrd.ec.europa.eu/projects-practice/exchanging-good-practices-integrating-immigrants-rural-areas-across-eu_en

[6] https://enrd.ec.europa.eu/projects-practice/cafe-and-kitchen-village-shop-dyron_en