

Search

Total results: 160.



## [Mid Ireland Adventure](#) <sup>[1]</sup>

Keywords:

Entrepreneurship, Job creation, LEADER/CLLD, Rural Inspiration Awards: nominees, Rural SMEs, Tourism

Countries:

Ireland

A start-up company specialising in outdoor sports activities used RDP support to purchase equipment and respond to increasing demand for adventure tourism.



## **Kyrö Distillery - Investing in improved production capacity** [2]

Keywords:

Competitiveness, Entrepreneurship, Farm restructuring/modernisation, Food & Drink, Job creation, Rural business, Rural Inspiration Awards: nominees

Countries:

Finland

A company producing rye gin and whiskey used RDP support to increase its production capacity to meet the demand of national and international markets.



## **SOLAR ENERGY - Promoting the use of solar energy by the primary sector in the Balearic islands** [3]

Keywords:

Energy efficiency, Entrepreneurship, Environmental sustainability, LEADER/CLLD, Renewables, Rural Inspiration Awards: nominees

Countries:

Spain

A pilot project to demonstrate the environmental and economic benefits of using solar energy.



## **AGROBERRY - Original from Zamora** [4]

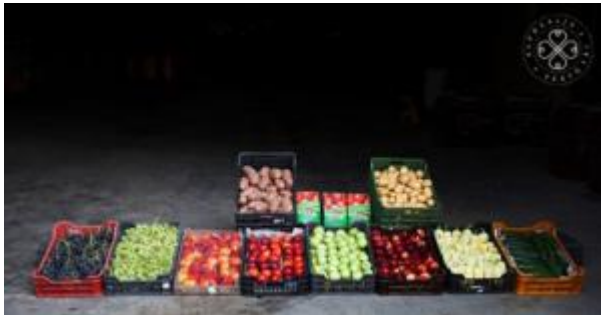
Keywords:

Agriculture, Diversification, Entrepreneurship, Job creation, LEADER/CLLD, Rural Inspiration Awards: nominees

Countries:

Spain

A young female farmer introduced a blackberry plantation into a wheat and barley production area and created added value by developing a new range of products. This was the winning initiative of the 2019 Rural Inspiration Awards in the 'Improving competitiveness' category.



## **Setting up an environmentally friendly fruit juice production plant** [5]

Keywords:

Agriculture, Entrepreneurship, Family farming, Job creation, Product quality, Renewable energy

Countries:

Hungary

Setting up a fruit juice processing plant that operates with renewable energy.



## [Caherconnell Archaeology Field School](#) [6]

Keywords:

Culture, LEADER/CLLD, Tourism, Vocational training & skills acquisition

Countries:

Ireland

LEADER funding enabled the purchase of specialist equipment for training students in the use of modern and sophisticated archaeological surveying techniques.



## [Tuffery jeans - a rural tailor shop 2.0](#) [7]

Keywords:

LEADER/CLLD, Rural business, Rural SMEs

Countries:

France

A family business, with a long-standing tradition of producing denim clothing, used support from the LEADER measure to establish a modern workshop and increase its share in domestic and international markets.



## **Modernisation of a cannery to stimulate the local economy**

[8]

Keywords:

Entrepreneurship, Farm restructuring/modernisation, Product quality, Rural business, Rural SMEs

Countries:

Bulgaria

Modernisation of a cannery with new machinery leading to improved competitiveness and a stronger local short supply chain.



## **Diversifying a national cultural monument into a recreation centre** [9]

Keywords:

Culture, Diversification, Entrepreneurship, Job creation, Rural SMEs

Countries:

Slovakia

unique military fortress complex, listed as the national cultural monument, was turned into an attractive recreational and relaxation centre Kortina.



## [Juhart farm - Investing in a new poultry house](#) [10]

Keywords:

Animal husbandry, Competitiveness, Diversification, Entrepreneurship, Environmental protection, Family farming, Rural business

Countries:

Slovenia

A family farm used RDP support to switch from cattle to turkey breeding in response to market demand.

## Pages

[« first](#) [11]

[< previous](#) [12]

...

[2](#) [13]

[3](#) [14]

[4](#) [15]

[5](#) [12]

**6**

[7](#) [16]

[8](#) [17]

[9](#) [18]

[10](#) [19]

...

[next >](#) [16]

[last »](#) [20]

---

### Source URL:

[https://enrd.ec.europa.eu/projects-practice/\\_en?page=5&project\\_keywords\\_filter=19753&amp%3Bamp%3Bproject\\_country=All&amp%3Bamp%3Bfield\\_enrd\\_prj\\_measure\\_tid=All&amp%3Bamp%3Bfield\\_enrd\\_prj\\_focus\\_area\\_tid=All&amp%3Bamp%3Bf%5B0%5D=sm\\_enrd\\_eu\\_countries%3AUnited%20Kingdom&amp%3Bf%5B0%5D=im\\_field\\_enrd\\_prj\\_keywords%3A20472&f%5B0%5D=im\\_field\\_enrd\\_prj\\_keywords%3A19759&f%5B1%5D=im\\_field\\_enrd\\_prj\\_keywords%3A20510&f%5B2%5D=im\\_field\\_enrd\\_prj\\_keywords%3A20466&f%5B3%5D=im\\_field\\_enrd\\_prj\\_keywords%3A20476](https://enrd.ec.europa.eu/projects-practice/_en?page=5&project_keywords_filter=19753&amp%3Bamp%3Bproject_country=All&amp%3Bamp%3Bfield_enrd_prj_measure_tid=All&amp%3Bamp%3Bfield_enrd_prj_focus_area_tid=All&amp%3Bamp%3Bf%5B0%5D=sm_enrd_eu_countries%3AUnited%20Kingdom&amp%3Bf%5B0%5D=im_field_enrd_prj_keywords%3A20472&f%5B0%5D=im_field_enrd_prj_keywords%3A19759&f%5B1%5D=im_field_enrd_prj_keywords%3A20510&f%5B2%5D=im_field_enrd_prj_keywords%3A20466&f%5B3%5D=im_field_enrd_prj_keywords%3A20476)

### Links

[1] [https://enrd.ec.europa.eu/projects-practice/mid-ireland-adventure\\_en](https://enrd.ec.europa.eu/projects-practice/mid-ireland-adventure_en)

[2] [https://enrd.ec.europa.eu/projects-practice/kyro-distillery-investing-improved-production-capacity\\_en](https://enrd.ec.europa.eu/projects-practice/kyro-distillery-investing-improved-production-capacity_en)

[3] [https://enrd.ec.europa.eu/projects-practice/solar-energy-promoting-use-solar-energy-primary-sector-balearic-islands\\_en](https://enrd.ec.europa.eu/projects-practice/solar-energy-promoting-use-solar-energy-primary-sector-balearic-islands_en)

[4] [https://enrd.ec.europa.eu/projects-practice/agroberry-original-zamora\\_en](https://enrd.ec.europa.eu/projects-practice/agroberry-original-zamora_en)

[5] [https://enrd.ec.europa.eu/projects-practice/setting-environmentally-friendly-fruit-juice-production-plant\\_en](https://enrd.ec.europa.eu/projects-practice/setting-environmentally-friendly-fruit-juice-production-plant_en)

[6] [https://enrd.ec.europa.eu/projects-practice/caherconnell-archaeology-field-school\\_en](https://enrd.ec.europa.eu/projects-practice/caherconnell-archaeology-field-school_en)

[7] [https://enrd.ec.europa.eu/projects-practice/tuffery-jeans-rural-tailor-shop-20\\_en](https://enrd.ec.europa.eu/projects-practice/tuffery-jeans-rural-tailor-shop-20_en)

[8] [https://enrd.ec.europa.eu/projects-practice/modernisation-cannery-stimulate-local-economy\\_en](https://enrd.ec.europa.eu/projects-practice/modernisation-cannery-stimulate-local-economy_en)

[9] [https://enrd.ec.europa.eu/projects-practice/diversifying-national-cultural-monument-recreation-centre\\_en](https://enrd.ec.europa.eu/projects-practice/diversifying-national-cultural-monument-recreation-centre_en)

[10] [https://enrd.ec.europa.eu/projects-practice/juhart-farm-investing-new-poultry-house\\_en](https://enrd.ec.europa.eu/projects-practice/juhart-farm-investing-new-poultry-house_en)

[11]

[https://enrd.ec.europa.eu/projects-practice/\\_en?project\\_keywords\\_filter=19753&amp;amp%3Bamp%3Bproject\\_country=All&amp;amp%3Bamp%3Bfield\\_enrd\\_prj\\_measure\\_tid=All&amp;amp%3Bamp%3Bfield\\_enrd\\_prj\\_focus\\_area\\_tid=All&amp;amp%3Bamp%3Bf%5B0%5D=sm\\_enrd\\_eu\\_countries%3AUnited%20Kingdom&amp;amp%3Bf%5B0%5D=im\\_field\\_enrd\\_prj\\_keywords%3A20472&amp;f%5B0%5D=im\\_field\\_enrd\\_prj\\_keywords%3A19759&amp;f%5B1%5D=im\\_field\\_enrd\\_prj\\_keywords%3A20510&amp;f%5B2%5D=im\\_field\\_enrd\\_prj\\_keywords%3A20466&amp;f%5B3%5D=im\\_field\\_enrd\\_prj\\_keywords%3A20476](https://enrd.ec.europa.eu/projects-practice/_en?project_keywords_filter=19753&amp;amp%3Bamp%3Bproject_country=All&amp;amp%3Bamp%3Bfield_enrd_prj_measure_tid=All&amp;amp%3Bamp%3Bfield_enrd_prj_focus_area_tid=All&amp;amp%3Bamp%3Bf%5B0%5D=sm_enrd_eu_countries%3AUnited%20Kingdom&amp;amp%3Bf%5B0%5D=im_field_enrd_prj_keywords%3A20472&amp;f%5B0%5D=im_field_enrd_prj_keywords%3A19759&amp;f%5B1%5D=im_field_enrd_prj_keywords%3A20510&amp;f%5B2%5D=im_field_enrd_prj_keywords%3A20466&amp;f%5B3%5D=im_field_enrd_prj_keywords%3A20476)

[12]

[https://enrd.ec.europa.eu/projects-practice/\\_en?page=4&amp;project\\_keywords\\_filter=19753&amp;amp%3Bamp%3Bproject\\_country=All&amp;amp%3Bamp%3Bfield\\_enrd\\_prj\\_measure\\_tid=All&amp;amp%3Bamp%3Bfield\\_enrd\\_prj\\_focus\\_area\\_tid=All&amp;amp%3Bamp%3Bf%5B0%5D=sm\\_enrd\\_eu\\_countries%3AUnited%20Kingdom&amp;amp%3Bf%5B0%5D=im\\_field\\_enrd\\_prj\\_keywords%3A20472&amp;f%5B0%5D=im\\_field\\_enrd\\_prj\\_keywords%3A19759&amp;f%5B1%5D=im\\_field\\_enrd\\_prj\\_keywords%3A20510&amp;f%5B2%5D=im\\_field\\_enrd\\_prj\\_keywords%3A20466&amp;f%5B3%5D=im\\_field\\_enrd\\_prj\\_keywords%3A20476](https://enrd.ec.europa.eu/projects-practice/_en?page=4&amp;project_keywords_filter=19753&amp;amp%3Bamp%3Bproject_country=All&amp;amp%3Bamp%3Bfield_enrd_prj_measure_tid=All&amp;amp%3Bamp%3Bfield_enrd_prj_focus_area_tid=All&amp;amp%3Bamp%3Bf%5B0%5D=sm_enrd_eu_countries%3AUnited%20Kingdom&amp;amp%3Bf%5B0%5D=im_field_enrd_prj_keywords%3A20472&amp;f%5B0%5D=im_field_enrd_prj_keywords%3A19759&amp;f%5B1%5D=im_field_enrd_prj_keywords%3A20510&amp;f%5B2%5D=im_field_enrd_prj_keywords%3A20466&amp;f%5B3%5D=im_field_enrd_prj_keywords%3A20476)

[13]

[https://enrd.ec.europa.eu/projects-practice/\\_en?page=1&amp;project\\_keywords\\_filter=19753&amp;amp%3Bamp%3Bproject\\_country=All&amp;amp%3Bamp%3Bfield\\_enrd\\_prj\\_measure\\_tid=All&amp;amp%3Bamp%3Bfield\\_enrd\\_prj\\_focus\\_area\\_tid=All&amp;amp%3Bamp%3Bf%5B0%5D=sm\\_enrd\\_eu\\_countries%3AUnited%20Kingdom&amp;amp%3Bf%5B0%5D=im\\_field\\_enrd\\_prj\\_keywords%3A20472&amp;f%5B0%5D=im\\_field\\_enrd\\_prj\\_keywords%3A19759&amp;f%5B1%5D=im\\_field\\_enrd\\_prj\\_keywords%3A20510&amp;f%5B2%5D=im\\_field\\_enrd\\_prj\\_keywords%3A20466&amp;f%5B3%5D=im\\_field\\_enrd\\_prj\\_keywords%3A20476](https://enrd.ec.europa.eu/projects-practice/_en?page=1&amp;project_keywords_filter=19753&amp;amp%3Bamp%3Bproject_country=All&amp;amp%3Bamp%3Bfield_enrd_prj_measure_tid=All&amp;amp%3Bamp%3Bfield_enrd_prj_focus_area_tid=All&amp;amp%3Bamp%3Bf%5B0%5D=sm_enrd_eu_countries%3AUnited%20Kingdom&amp;amp%3Bf%5B0%5D=im_field_enrd_prj_keywords%3A20472&amp;f%5B0%5D=im_field_enrd_prj_keywords%3A19759&amp;f%5B1%5D=im_field_enrd_prj_keywords%3A20510&amp;f%5B2%5D=im_field_enrd_prj_keywords%3A20466&amp;f%5B3%5D=im_field_enrd_prj_keywords%3A20476)

[14]

[https://enrd.ec.europa.eu/projects-practice/\\_en?page=2&amp;project\\_keywords\\_filter=19753&amp;amp%3Bamp%3Bproject\\_country=All&amp;amp%3Bamp%3Bfield\\_enrd\\_prj\\_measure\\_tid=All&amp;amp%3Bamp%3Bfield\\_enrd\\_prj\\_focus\\_area\\_tid=All&amp;amp%3Bamp%3Bf%5B0%5D=sm\\_enrd\\_eu\\_countries%3AUnited%20Kingdom&amp;amp%3Bf%5B0%5D=im\\_field\\_enrd\\_prj\\_keywords%3A20472&amp;f%5B0%5D=im\\_field\\_enrd\\_prj\\_keywords%3A19759&amp;f%5B1%5D=im\\_field\\_enrd\\_prj\\_keywords%3A20510&amp;f%5B2%5D=im\\_field\\_enrd\\_prj\\_keywords%3A20466&amp;f%5B3%5D=im\\_field\\_enrd\\_prj\\_keywords%3A20476](https://enrd.ec.europa.eu/projects-practice/_en?page=2&amp;project_keywords_filter=19753&amp;amp%3Bamp%3Bproject_country=All&amp;amp%3Bamp%3Bfield_enrd_prj_measure_tid=All&amp;amp%3Bamp%3Bfield_enrd_prj_focus_area_tid=All&amp;amp%3Bamp%3Bf%5B0%5D=sm_enrd_eu_countries%3AUnited%20Kingdom&amp;amp%3Bf%5B0%5D=im_field_enrd_prj_keywords%3A20472&amp;f%5B0%5D=im_field_enrd_prj_keywords%3A19759&amp;f%5B1%5D=im_field_enrd_prj_keywords%3A20510&amp;f%5B2%5D=im_field_enrd_prj_keywords%3A20466&amp;f%5B3%5D=im_field_enrd_prj_keywords%3A20476)



5D=im\_field\_enrd\_prj\_keywords%3A20510&amp;f%5B2%5D=im\_field\_enrd\_prj\_keywords%3A20466&amp;f%5B3%5D=im\_field\_enrd\_prj\_keywords%3A20476

[15]

[https://enrd.ec.europa.eu/projects-practice/\\_en?page=3&amp;project\\_keywords\\_filter=19753&amp;project\\_country=All&amp;field\\_enrd\\_prj\\_measure\\_tid=All&amp;field\\_enrd\\_prj\\_focus\\_area\\_tid=All&amp;sm\\_enrd\\_eu\\_countries%3AUnited%20Kingdom&amp;im\\_field\\_enrd\\_prj\\_keywords%3A20472&amp;im\\_field\\_enrd\\_prj\\_keywords%3A19759&amp;im\\_field\\_enrd\\_prj\\_keywords%3A20510&amp;im\\_field\\_enrd\\_prj\\_keywords%3A20466&amp;im\\_field\\_enrd\\_prj\\_keywords%3A20476](https://enrd.ec.europa.eu/projects-practice/_en?page=3&amp;project_keywords_filter=19753&amp;project_country=All&amp;field_enrd_prj_measure_tid=All&amp;field_enrd_prj_focus_area_tid=All&amp;sm_enrd_eu_countries%3AUnited%20Kingdom&amp;im_field_enrd_prj_keywords%3A20472&amp;im_field_enrd_prj_keywords%3A19759&amp;im_field_enrd_prj_keywords%3A20510&amp;im_field_enrd_prj_keywords%3A20466&amp;im_field_enrd_prj_keywords%3A20476)

[16]

[https://enrd.ec.europa.eu/projects-practice/\\_en?page=6&amp;project\\_keywords\\_filter=19753&amp;project\\_country=All&amp;field\\_enrd\\_prj\\_measure\\_tid=All&amp;field\\_enrd\\_prj\\_focus\\_area\\_tid=All&amp;sm\\_enrd\\_eu\\_countries%3AUnited%20Kingdom&amp;im\\_field\\_enrd\\_prj\\_keywords%3A20472&amp;im\\_field\\_enrd\\_prj\\_keywords%3A19759&amp;im\\_field\\_enrd\\_prj\\_keywords%3A20510&amp;im\\_field\\_enrd\\_prj\\_keywords%3A20466&amp;im\\_field\\_enrd\\_prj\\_keywords%3A20476](https://enrd.ec.europa.eu/projects-practice/_en?page=6&amp;project_keywords_filter=19753&amp;project_country=All&amp;field_enrd_prj_measure_tid=All&amp;field_enrd_prj_focus_area_tid=All&amp;sm_enrd_eu_countries%3AUnited%20Kingdom&amp;im_field_enrd_prj_keywords%3A20472&amp;im_field_enrd_prj_keywords%3A19759&amp;im_field_enrd_prj_keywords%3A20510&amp;im_field_enrd_prj_keywords%3A20466&amp;im_field_enrd_prj_keywords%3A20476)

[17]

[https://enrd.ec.europa.eu/projects-practice/\\_en?page=7&amp;project\\_keywords\\_filter=19753&amp;project\\_country=All&amp;field\\_enrd\\_prj\\_measure\\_tid=All&amp;field\\_enrd\\_prj\\_focus\\_area\\_tid=All&amp;sm\\_enrd\\_eu\\_countries%3AUnited%20Kingdom&amp;im\\_field\\_enrd\\_prj\\_keywords%3A20472&amp;im\\_field\\_enrd\\_prj\\_keywords%3A19759&amp;im\\_field\\_enrd\\_prj\\_keywords%3A20510&amp;im\\_field\\_enrd\\_prj\\_keywords%3A20466&amp;im\\_field\\_enrd\\_prj\\_keywords%3A20476](https://enrd.ec.europa.eu/projects-practice/_en?page=7&amp;project_keywords_filter=19753&amp;project_country=All&amp;field_enrd_prj_measure_tid=All&amp;field_enrd_prj_focus_area_tid=All&amp;sm_enrd_eu_countries%3AUnited%20Kingdom&amp;im_field_enrd_prj_keywords%3A20472&amp;im_field_enrd_prj_keywords%3A19759&amp;im_field_enrd_prj_keywords%3A20510&amp;im_field_enrd_prj_keywords%3A20466&amp;im_field_enrd_prj_keywords%3A20476)

[18]

[https://enrd.ec.europa.eu/projects-practice/\\_en?page=8&amp;project\\_keywords\\_filter=19753&amp;project\\_country=All&amp;field\\_enrd\\_prj\\_measure\\_tid=All&amp;field\\_enrd\\_prj\\_focus\\_area\\_tid=All&amp;sm\\_enrd\\_eu\\_countries%3AUnited%20Kingdom&amp;im\\_field\\_enrd\\_prj\\_keywords%3A20472&amp;im\\_field\\_enrd\\_prj\\_keywords%3A19759&amp;im\\_field\\_enrd\\_prj\\_keywords%3A20510&amp;im\\_field\\_enrd\\_prj\\_keywords%3A20466&amp;im\\_field\\_enrd\\_prj\\_keywords%3A20476](https://enrd.ec.europa.eu/projects-practice/_en?page=8&amp;project_keywords_filter=19753&amp;project_country=All&amp;field_enrd_prj_measure_tid=All&amp;field_enrd_prj_focus_area_tid=All&amp;sm_enrd_eu_countries%3AUnited%20Kingdom&amp;im_field_enrd_prj_keywords%3A20472&amp;im_field_enrd_prj_keywords%3A19759&amp;im_field_enrd_prj_keywords%3A20510&amp;im_field_enrd_prj_keywords%3A20466&amp;im_field_enrd_prj_keywords%3A20476)

[19]

[https://enrd.ec.europa.eu/projects-practice/\\_en?page=9&amp;project\\_keywords\\_filter=19753&amp;project\\_country=All&amp;field\\_enrd\\_prj\\_measure\\_tid=All&amp;field\\_enrd\\_prj\\_focus\\_area\\_tid=All&amp;sm\\_enrd\\_eu\\_countries%3AUnited%20Kingdom&amp;im\\_field\\_enrd\\_prj\\_keywords%3A20472&amp;im\\_field\\_enrd\\_prj\\_keywords%3A19759&amp;im\\_field\\_enrd\\_prj\\_keywords%3A20510&amp;im\\_field\\_enrd\\_prj\\_keywords%3A20466&amp;im\\_field\\_enrd\\_prj\\_keywords%3A20476](https://enrd.ec.europa.eu/projects-practice/_en?page=9&amp;project_keywords_filter=19753&amp;project_country=All&amp;field_enrd_prj_measure_tid=All&amp;field_enrd_prj_focus_area_tid=All&amp;sm_enrd_eu_countries%3AUnited%20Kingdom&amp;im_field_enrd_prj_keywords%3A20472&amp;im_field_enrd_prj_keywords%3A19759&amp;im_field_enrd_prj_keywords%3A20510&amp;im_field_enrd_prj_keywords%3A20466&amp;im_field_enrd_prj_keywords%3A20476)

[20]

[https://enrd.ec.europa.eu/projects-practice/\\_en?page=15&amp;project\\_keywords\\_filter=19753&amp;project\\_country=All&amp;field\\_enrd\\_prj\\_measure\\_tid=All&amp;field\\_enrd\\_prj\\_focus\\_area\\_tid=All&amp;sm\\_enrd\\_eu\\_countries%3AUnited%20Kingdom&amp;im\\_field\\_enrd\\_prj\\_keywords%3A20472&amp;im\\_field\\_enrd\\_prj\\_keywords%3A19759&amp;im\\_field\\_enrd\\_prj\\_keywords%3A20510&amp;im\\_field\\_enrd\\_prj\\_keywords%3A20466&amp;im\\_field\\_enrd\\_prj\\_keywords%3A20476](https://enrd.ec.europa.eu/projects-practice/_en?page=15&amp;project_keywords_filter=19753&amp;project_country=All&amp;field_enrd_prj_measure_tid=All&amp;field_enrd_prj_focus_area_tid=All&amp;sm_enrd_eu_countries%3AUnited%20Kingdom&amp;im_field_enrd_prj_keywords%3A20472&amp;im_field_enrd_prj_keywords%3A19759&amp;im_field_enrd_prj_keywords%3A20510&amp;im_field_enrd_prj_keywords%3A20466&amp;im_field_enrd_prj_keywords%3A20476)