

Search

Total results: 70.



[Developing mushroom production in Finland's forests](#) [1]

Keywords:

Agriculture, Bioeconomy, Cooperation, Innovation, Rural SMEs

Countries:

Finland

The Finnish Natural Resources Institute used EAFRD funding to develop the production of mushrooms for food and medicine to give forest owners an alternative income source.

GreenCareLab - A support network for nature-based businesses [2]

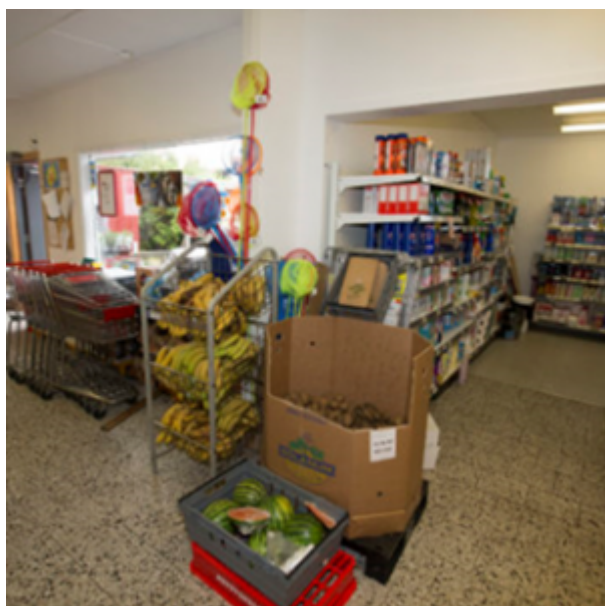
Keywords:

Advisory services, Bioeconomy, Cooperation, Rural SMEs, Social inclusion

Countries:

Finland

A Finnish NGO used EAFRD funds to develop a network of nature-based service providers and activities to support their development such as study trips and work groups.



Café and kitchen at the village shop on Dyrön [3]

Keywords:

Job creation, LEADER/CLLD, Rural SMEs, Tourism

Countries:

Sweden

A very small island in Sweden used EAFRD support to broaden the range of services offered by a village shop by building a café area and a kitchen.



[Expanding the Uuskaubi herb business in Estonia](#) [4]

Keywords:

Added value, Farm restructuring/modernisation, Rural SMEs

Countries:

Estonia

A small Estonian organic farm used EAFRD funding to scale up its production of herbs by investing in new machinery and upgrading buildings to help the business to grow.



[Local production of vinegars and syrups in Estonia](#) [5]

Keywords:

Direct marketing, LEADER/CLLD, Local food, Rural SMEs

Countries:

Estonia

A local producer of syrups and vinegars in Estonia used EAFRD funding to scale up production to create a business that sells to restaurants, shops and big suppliers.



[A holiday cottage on an equestrian farm](#) [6]

Keywords:

Diversification, Rural SMEs, Tourism

Countries:

Estonia

A year-round holiday cottage was built on an equestrian farm to accommodate guests. The construction used natural materials such as moss and wood.



[Acquisition of equipment for veterinary laboratory](#) [7]

Keywords:

Animal husbandry, Animal welfare, Rural services, Rural SMEs

Countries:

Romania

A young and dynamic team of veterinary sector experts received EAFRD support to establish a private laboratory offering high quality veterinary services to farmers.



Expanding the distribution of bakery products [8]

Keywords:

Local food, Rural SMEs, Short supply chains & local markets

Countries:

Romania

A company producing bread and pastry products used EAFRD support to expand its processing and storage capacity as well as its distribution network.



Small projects - great leverage [9]

Keywords:

LEADER/CLLD, Rural business, Rural SMEs

Countries:

Sweden

LAG-owned projects in Sweden are used to allow small seed-funding for specific purposes.



[Local capital](#) [10]

Keywords:

Financial Instruments, LEADER/CLLD, Rural business, Rural SMEs

Countries:

Sweden

Establishing a totally new and innovative crowd-sourcing concept combined with a local financial intermediary.

Pages

[« first](#) [11]

[< previous](#) [12]

[1](#) [11]

[2](#) [13]

[3](#) [14]

[4](#) [12]

5

[6](#) [15]

[7](#) [16]

[next >](#) [15]

[last »](#) [16]

Source URL:

https://enrd.ec.europa.eu/projects-practice/_en?page=4&project_keywords_filter=19753&project_country=All&field_enrd_prj_measure_tid=All&field_enrd_prj_focus_area_tid=All&field_enrd_prj_keywords%3A19741&field_enrd_prj_keywords%3A19723&field_enrd_prj_keywords%3A20479&field_enrd_prj_keywords%3A19754

Links

[1] https://enrd.ec.europa.eu/projects-practice/developing-mushroom-production-finlands-forests_en

[2] https://enrd.ec.europa.eu/projects-practice/greencarelab-support-network-nature-based-businesses_en

[3] https://enrd.ec.europa.eu/projects-practice/cafes-and-kitchen-village-shop-dyron_en

[4] https://enrd.ec.europa.eu/projects-practice/expanding-uuskaubi-herb-business-estonia_en

[5] https://enrd.ec.europa.eu/projects-practice/local-production-vinegars-and-syrups-estonia_en

[6] https://enrd.ec.europa.eu/projects-practice/holiday-cottage-equestrian-farm_en

[7] https://enrd.ec.europa.eu/projects-practice/acquisition-equipment-veterinary-laboratory_en

[8] https://enrd.ec.europa.eu/projects-practice/expanding-distribution-bakery-products_en

[9] https://enrd.ec.europa.eu/projects-practice/small-projects-great-leverage_en

[10] https://enrd.ec.europa.eu/projects-practice/local-capital_en

[11]

https://enrd.ec.europa.eu/projects-practice/_en?project_keywords_filter=19753&project_country=All&field_enrd_prj_measure_tid=All&field_enrd_prj_focus_area_tid=All&field_enrd_prj_keywords%3A19741&field_enrd_prj_keywords%3A19723&field_enrd_prj_keywords%3A20479&field_enrd_prj_keywords%3A19754

[12]

https://enrd.ec.europa.eu/projects-practice/_en?page=3&project_keywords_filter=19753&project_country=All&field_enrd_prj_measure_tid=All&field_enrd_prj_focus_area_tid=All&field_enrd_prj_keywords%3A19741&field_enrd_prj_keywords%3A19723&field_enrd_prj_keywords%3A20479&field_enrd_prj_keywords%3A19754

[13]

https://enrd.ec.europa.eu/projects-practice/_en?page=1&project_keywords_filter=19753&project_country=All&field_enrd_prj_measure_tid=All&field_enrd_prj_focus_area_tid=All&field_enrd_prj_keywords%3A19741&field_enrd_prj_keywords%3A19723&field_enrd_prj_keywords%3A20479&field_enrd_prj_keywords%3A19754

[14]

https://enrd.ec.europa.eu/projects-practice/_en?page=2&project_keywords_filter=19753&project_country=All&field_enrd_prj_measure_tid=All&field_enrd_prj_focus_area_tid=All&field_enrd_prj_keywords%3A19741&field_enrd_prj_keywords%3A19723&field_enrd_prj_keywords%3A20479&field_enrd_prj_keywords%3A19754

[15]

https://enrd.ec.europa.eu/projects-practice/_en?page=5&project_keywords_filter=19753&project_country=All&field_enrd_prj_measure_tid=All&field_enrd_prj_focus_area_tid=All&field_enrd_prj_keywords%3A19741&field_enrd_prj_keywords%3A19723&field_enrd_prj_keywords%3A20479&field_enrd_prj_keywords%3A19754

[16]

https://enrd.ec.europa.eu/projects-practice/_en?page=6&project_keywords_filter=19753&project_country=All&field_enrd_prj_measure_tid=All&field_enrd_prj_focus_area_tid=All&field_enrd_prj_keywords%3A19741&field_enrd_prj_keywords%3A19723&field_enrd_prj_keywords%3A20479&field_enrd_prj_keywords%3A19754