

Search

Total results: 5.



## [Ny på landet - Rural newcomers](#) <sup>[1]</sup>

Keywords:

Demography, Education & lifelong learning, Migrants, Rural Inspiration Awards: nominees, Social inclusion, Youth

Countries:

Sweden

A project that supports the integration of young immigrants into Swedish society and is organised by young immigrants themselves.



## **The Potato backyard, entrepreneurial training for immigrants** [2]

Keywords:

Education & lifelong learning, Job creation, LEADER/CLLD, Migrants

Countries:

Sweden

A small successful food market initiative in Sweden used EAFRD funding to help migrants develop their skills, find employment and set up their own business.



## **Exchanging good practices on integrating immigrants in rural areas across the EU** [3]

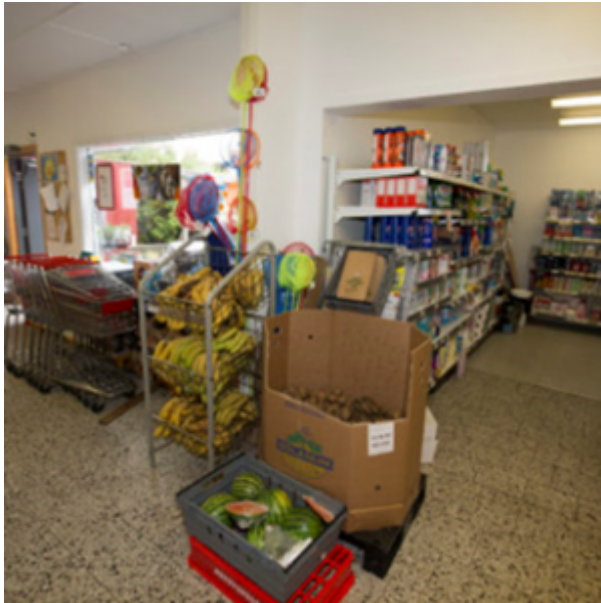
Keywords:

Inter-territorial/Transnational cooperation, LEADER/CLLD, Migrants, Social inclusion

Countries:

Austria, Finland, Sweden

A Finnish NGO used EAFRD funding in a transnational project to exchange and develop best practices for integrating immigrants and refugees in rural areas.



## Café and kitchen at the village shop on Dyrön [4]

Keywords:

Job creation, LEADER/CLLD, Rural SMEs, Tourism

Countries:

Sweden

A very small island in Sweden used EAFRD support to broaden the range of services offered by a village shop by building a café area and a kitchen.



## [‘Summer in the Valley’ music festivals in Sweden](#) [5]

Keywords:

LEADER/CLLD, Migrants, Social inclusion, Youth

Countries:

Sweden

A series of locally organised music festivals to promote social cohesion, youth engagement and community spirit.

---

### Source URL:

[https://enrd.ec.europa.eu/projects-practice/\\_en?f%5B0%5D=im\\_field\\_enrd\\_prj\\_keywords%3A19761&f%5B1%5D=im\\_field\\_enrd\\_prj\\_keywords%3A19742&f%5B2%5D=im\\_field\\_enrd\\_prj\\_keywords%3A19729&f%5B3%5D=im\\_field\\_enrd\\_prj\\_keywords%3A19741&f%5B4%5D=im\\_field\\_enrd\\_prj\\_keywords%3A20467&f%5B5%5D=im\\_field\\_enrd\\_prj\\_keywords%3A19747&f%5B6%5D=im\\_field\\_enrd\\_prj\\_measure%3A17110&f%5B7%5D=im\\_field\\_enrd\\_prj\\_keywords%3A20533&f%5B8%5D=sm\\_enrd\\_eu\\_countries%3ASweden&f%5B9%5D=im\\_field\\_enrd\\_prj\\_keywords%3A19745&f%5BA%5D=im\\_field\\_enrd\\_prj\\_keywords%3A19753](https://enrd.ec.europa.eu/projects-practice/_en?f%5B0%5D=im_field_enrd_prj_keywords%3A19761&f%5B1%5D=im_field_enrd_prj_keywords%3A19742&f%5B2%5D=im_field_enrd_prj_keywords%3A19729&f%5B3%5D=im_field_enrd_prj_keywords%3A19741&f%5B4%5D=im_field_enrd_prj_keywords%3A20467&f%5B5%5D=im_field_enrd_prj_keywords%3A19747&f%5B6%5D=im_field_enrd_prj_measure%3A17110&f%5B7%5D=im_field_enrd_prj_keywords%3A20533&f%5B8%5D=sm_enrd_eu_countries%3ASweden&f%5B9%5D=im_field_enrd_prj_keywords%3A19745&f%5BA%5D=im_field_enrd_prj_keywords%3A19753)

### Links

[1] [https://enrd.ec.europa.eu/projects-practice/ny-pa-landet-rural-newcomers\\_en](https://enrd.ec.europa.eu/projects-practice/ny-pa-landet-rural-newcomers_en)

[2] [https://enrd.ec.europa.eu/projects-practice/potato-backyard-entrepreneurial-training-immigrants\\_en](https://enrd.ec.europa.eu/projects-practice/potato-backyard-entrepreneurial-training-immigrants_en)

[3] [https://enrd.ec.europa.eu/projects-practice/exchanging-good-practices-integrating-immigrants-rural-areas-across-eu\\_en](https://enrd.ec.europa.eu/projects-practice/exchanging-good-practices-integrating-immigrants-rural-areas-across-eu_en)

[4] [https://enrd.ec.europa.eu/projects-practice/cafe-and-kitchen-village-shop-dyron\\_en](https://enrd.ec.europa.eu/projects-practice/cafe-and-kitchen-village-shop-dyron_en)

[5] [https://enrd.ec.europa.eu/projects-practice/summer-valley-music-festivals-sweden\\_en](https://enrd.ec.europa.eu/projects-practice/summer-valley-music-festivals-sweden_en)