

Search

Total results: 5.



## [‘Les 3 Givrées’ - Ice cream from the farm](#) <sup>[1]</sup>

Keywords:

Agriculture, Competitiveness, Diversification, Entrepreneurship, Family farming, Food & Drink, Innovation, Job creation, Product quality, Rural business, Rural SMEs, Women

Countries:

France

In an area where the agricultural sector is under pressure due the expansion of a nearby urban centre, the diversification of farming activities e.g. ice-cream production and marketing, can ensure the farm’s sustainability.



© Silma d.o.o.

## [Investing in meat processing equipment](#) [2]

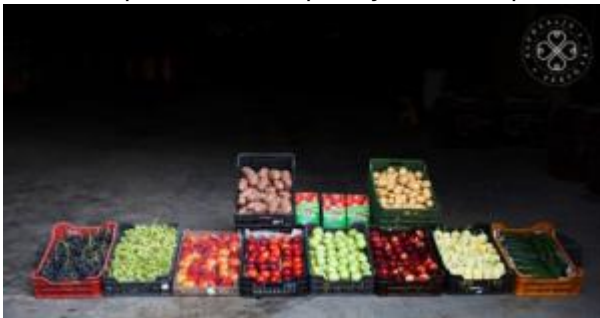
Keywords:

Entrepreneurship, Job creation, Product quality, Rural business

Countries:

Croatia

A company making pork products used RDP support to purchase new equipment that allowed it to increase production capacity and end product quality.



## [Setting up an environmentally friendly fruit juice production plant](#) [3]

Keywords:

Agriculture, Entrepreneurship, Family farming, Job creation, Product quality, Renewable energy

Countries:

Hungary

Setting up a fruit juice processing plant that operates with renewable energy.



## [Acquisition of equipment for selling quality meat products](#) [4]

Keywords:

Food & Drink, Job creation, Local food, Rural business

Countries:

Estonia

A small family factory used RDP support to equip its new store, which sells its high-quality meat products.



## [Setting up a traditional bakery on a farm](#) [5]

Keywords:

Added value, Local food, Rural business

Countries:

France

A young female farmer used RDP support to set up a traditional backing oven and start selling organic bread in the local area.

---

**Source URL:**

[https://enrd.ec.europa.eu/projects-practice/\\_en?f%5B0%5D=im\\_field\\_enrd\\_prj\\_keywords%3A19736&f%5B1%5D=im\\_field\\_enrd\\_prj\\_keywords%3A19751&f%5B2%5D=im\\_field\\_enrd\\_prj\\_keywords%3A20511&f%5B3%5D=im\\_field\\_enrd\\_prj\\_keywords%3A20476&f%5B4%5D=im\\_field\\_enrd\\_prj\\_keywords%3A20471&f%5B5%5D=im\\_field\\_enrd\\_prj\\_keywords%3A19759&f%5B6%5D=im\\_field\\_enrd\\_prj\\_focus\\_area%3A17117&f%5B7%5D=im\\_field\\_enrd\\_prj\\_keywords%3A19738&f%5B8%5D=im\\_field\\_enrd\\_prj\\_focus\\_area%3A17122&f%5B9%5D=im\\_field\\_enrd\\_prj\\_focus\\_area%3A17124&f%5B10%5D=sm\\_enrd\\_eu\\_countries%3AFrance&f%5B11%5D=sm\\_enrd\\_eu\\_countries%3AHungary&f%5B12%5D=im\\_field\\_enrd\\_prj\\_measure%3A17095&f%5B13%5D=sm\\_enrd\\_eu\\_countries%3ACroatia&f%5B14%5D=sm\\_enrd\\_eu\\_countries%3AEstonia&f%5B15%5D=im\\_field\\_enrd\\_prj\\_keywords%3A19723](https://enrd.ec.europa.eu/projects-practice/_en?f%5B0%5D=im_field_enrd_prj_keywords%3A19736&f%5B1%5D=im_field_enrd_prj_keywords%3A19751&f%5B2%5D=im_field_enrd_prj_keywords%3A20511&f%5B3%5D=im_field_enrd_prj_keywords%3A20476&f%5B4%5D=im_field_enrd_prj_keywords%3A20471&f%5B5%5D=im_field_enrd_prj_keywords%3A19759&f%5B6%5D=im_field_enrd_prj_focus_area%3A17117&f%5B7%5D=im_field_enrd_prj_keywords%3A19738&f%5B8%5D=im_field_enrd_prj_focus_area%3A17122&f%5B9%5D=im_field_enrd_prj_focus_area%3A17124&f%5B10%5D=sm_enrd_eu_countries%3AFrance&f%5B11%5D=sm_enrd_eu_countries%3AHungary&f%5B12%5D=im_field_enrd_prj_measure%3A17095&f%5B13%5D=sm_enrd_eu_countries%3ACroatia&f%5B14%5D=sm_enrd_eu_countries%3AEstonia&f%5B15%5D=im_field_enrd_prj_keywords%3A19723)

**Links**

- [1] [https://enrd.ec.europa.eu/projects-practice/les-3-givrees-ice-cream-farm\\_en](https://enrd.ec.europa.eu/projects-practice/les-3-givrees-ice-cream-farm_en)
- [2] [https://enrd.ec.europa.eu/projects-practice/investing-meat-processing-equipment\\_en](https://enrd.ec.europa.eu/projects-practice/investing-meat-processing-equipment_en)
- [3] [https://enrd.ec.europa.eu/projects-practice/setting-environmentally-friendly-fruit-juice-production-plant\\_en](https://enrd.ec.europa.eu/projects-practice/setting-environmentally-friendly-fruit-juice-production-plant_en)
- [4] [https://enrd.ec.europa.eu/projects-practice/acquisition-equipment-selling-quality-meat-products\\_en](https://enrd.ec.europa.eu/projects-practice/acquisition-equipment-selling-quality-meat-products_en)
- [5] [https://enrd.ec.europa.eu/projects-practice/setting-traditional-bakery-farm\\_en](https://enrd.ec.europa.eu/projects-practice/setting-traditional-bakery-farm_en)