

Search

Total results: 3.



T E R R O I R M O S E L L E

Terroir Moselle - Wine and architecture route ^[1]

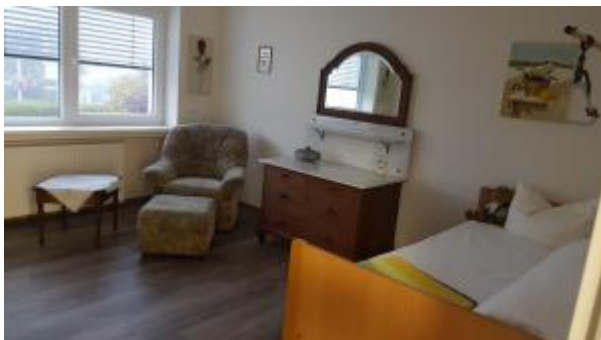
Keywords:

Added value, Agriculture, Bioeconomy, Competitiveness, Cooperation, Culture, Entrepreneurship, Food & Drink, Inter-territorial/Transnational cooperation, LEADER/CLLD, Local Development Strategy, Market development, Nature conservation, Tourism

Countries:

France, Germany, Luxembourg

The 'Terroir Moselle wine and architecture route' is a 'preparatory' cooperation project gathering six LEADER areas, five wine growing areas from four regions and three countries.



[Converting a former vicarage into a community care centre](#)

[2]

Keywords:

Job creation, LEADER/CLLD, Rural services, Social inclusion, Social services

Countries:

Germany

Offering health and support services to elderly people and those in need by converting a former vicarage into a community care facility.



[The new cooperative store at Ballstädt](#) [3]

Keywords:

LEADER/CLLD, Rural services, Rural SMEs

Countries:

Germany

The local community of Ballstadt created a financially self-sustaining combined village shop and café, which acts as an important meeting place for the local community.

Source URL:

https://enrd.ec.europa.eu/projects-practice/_en?f%5B0%5D=im_field_enrd_prj_keywords%3A19736&f%5B1%5D=im_field_enrd_prj_keywords%3A19731&f%5B2%5D=im_field_enrd_prj_keywords%3A19753&f%5B3%5D=im_field_enrd_prj_keywords%3A20563&f%5B4%5D=im_field_enrd_prj_keywords%3A19735&f%5B5%5D=im_field_enrd_prj_keywords%3A19721&f%5B6%5D=sm_enrd_eu_countries%3AGermany&f%5B7%5D=im_field_enrd_prj_focus_area%3A17128&f%5B8%5D=im_field_enrd_prj_keywords%3A19723

Links

[1] https://enrd.ec.europa.eu/projects-practice/terroir-moselle-wine-and-architecture-route_en

[2] https://enrd.ec.europa.eu/projects-practice/converting-former-vicarage-community-care-centre_en

[3] https://enrd.ec.europa.eu/projects-practice/new-cooperative-store-ballstadt_en