

Search

Total results: 8.



[Alvesta Biogas - expanding its production capacity](#) [1]

Keywords:

Agriculture, Climate change adaptation, Environmental sustainability, Renewable energy

Countries:

Sweden

Support from the rural development programme was used to buy new machinery and expand the production capacity of a biogas plant.



Brännland Cider [2]

Keywords:

Agriculture, Entrepreneurship, Job creation, Product quality, Rural Inspiration Awards: nominees

Countries:

Sweden

A company that produces ice-cider in northern Sweden, combined RDP support and crowdfunding to plant an apple orchard that would support its production needs.



Nature and outdoor tourism - cooperation and networking for local business [3]

Keywords:

Cooperation, LEADER/CLLD, Networking, Rural business, Tourism

Countries:

Sweden

In order to take advantage of the enormous potential of outdoor tourism, fostering cooperation and networking among the local actors is essential.



The Potato backyard, entrepreneurial training for immigrants [4]

Keywords:

Education & lifelong learning, Job creation, LEADER/CLLD, Migrants

Countries:

Sweden

A small successful food market initiative in Sweden used EAFRD funding to help migrants develop their skills, find employment and set up their own business.



Suderbyn - Community-led development of an ecovillage in Sweden [5]

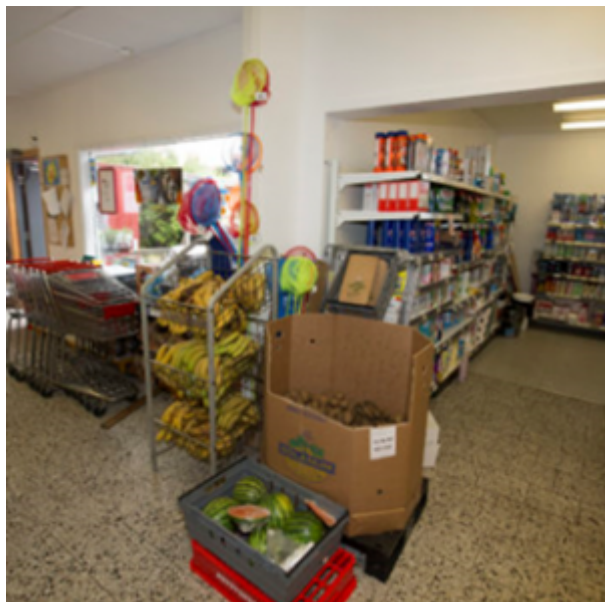
Keywords:

Bioeconomy, LEADER/CLLD, Nature conservation, Organic farming, Smart Villages, Tourism

Countries:

Sweden

An ecovillage was developed on Sweden's Gotland island using EAFRD funding, providing a model for environmentally-friendly accommodation, waste water treatment, food and energy production. The site is also a template for non-consumerist approaches.



Café and kitchen at the village shop on Dyrön [6]

Keywords:

Job creation, LEADER/CLLD, Rural SMEs, Tourism

Countries:

Sweden

A very small island in Sweden used EAFRD support to broaden the range of services offered by a village shop by building a café area and a kitchen.



Green enterprise introduction course in Sweden [7]

Keywords:

Education & lifelong learning, Job creation, Migrants, Social inclusion

Countries:

Sweden

A cooperative association in Sweden received EAFRD support to offer a tailored course aimed at immigrants, building on their experience of rural life and improving their language skills to increase

their prospects of finding work.



[Cross-cultural integration through traditional baking in Sweden](#) [8]

Keywords:

Job creation, Social inclusion

Countries:

Sweden

This project brought together locals and those born abroad through baking.

Source URL:

https://enrd.ec.europa.eu/projects-practice/_en?amp%3Bproject_keywords_filter=19753&%3Bproject_country=All&%3Bfield_enrd_prj_measure_tid=All&%3Bfield_enrd_prj_focus_area_tid=All&%3Bf%5B0%5D=im_field_enrd_prj_keywords%3A20466&f%5B0%5D=im_field_enrd_prj_keywords%3A19751&f%5B1%5D=im_field_enrd_prj_keywords%3A20464&f%5B2%5D=im_field_enrd_prj_keywords%3A19759&f%5B3%5D=sm_enrd_eu_countries%3ASweden&f%5B4%5D=im_field_enrd_prj_keywords%3A19742

Links

[1] https://enrd.ec.europa.eu/projects-practice/alvesta-biogas-expanding-its-production-capacity_en

[2] https://enrd.ec.europa.eu/projects-practice/brannland-cider_en

[3]

https://enrd.ec.europa.eu/projects-practice/nature-and-outdoor-tourism-cooperation-and-networking-local-business_en

[4] https://enrd.ec.europa.eu/projects-practice/potato-backyard-entrepreneurial-training-immigrants_en

[5] https://enrd.ec.europa.eu/projects-practice/suderbyn-community-led-development-ecovillage-sweden_en

[6] https://enrd.ec.europa.eu/projects-practice/cafe-and-kitchen-village-shop-dyron_en

[7] https://enrd.ec.europa.eu/projects-practice/green-enterprise-introduction-course-sweden_en

[8] https://enrd.ec.europa.eu/projects-practice/cross-cultural-integration-through-traditional-baking-sweden_en