

Name of Rural Network

Romanian NRN



Contact Details

Address: Clucerului Street nr 35 – 1st floor, Sector 1 - 011363
Bucharest (Romania)

Telephone number: +40 21 3171580

FAX number: +40 21 3171581

Website: www.rndr.ro

Network office email: info@rndr.ro

Contact: Rosa Mayado

Email: rmayado@rndr.ro

Mission Statement and Strategic Objectives of the Rural Network

- The National Rural Development Network has as general objective the task to engage with all actors involved in rural development, to promote an effective flow of information, the exchange of ideas, good practices and cooperation amongst actors.
- The specific aims of the rural network include to:
 - Create an agricultural and forestry economy based on those holdings which should be modernised;
 - Develop the agriculture which has to favour diversity and environment preservation;
 - Improve the quality of life and the economic development in rural areas;
 - Improve the local governance in order to draw up and implement the local development strategies.

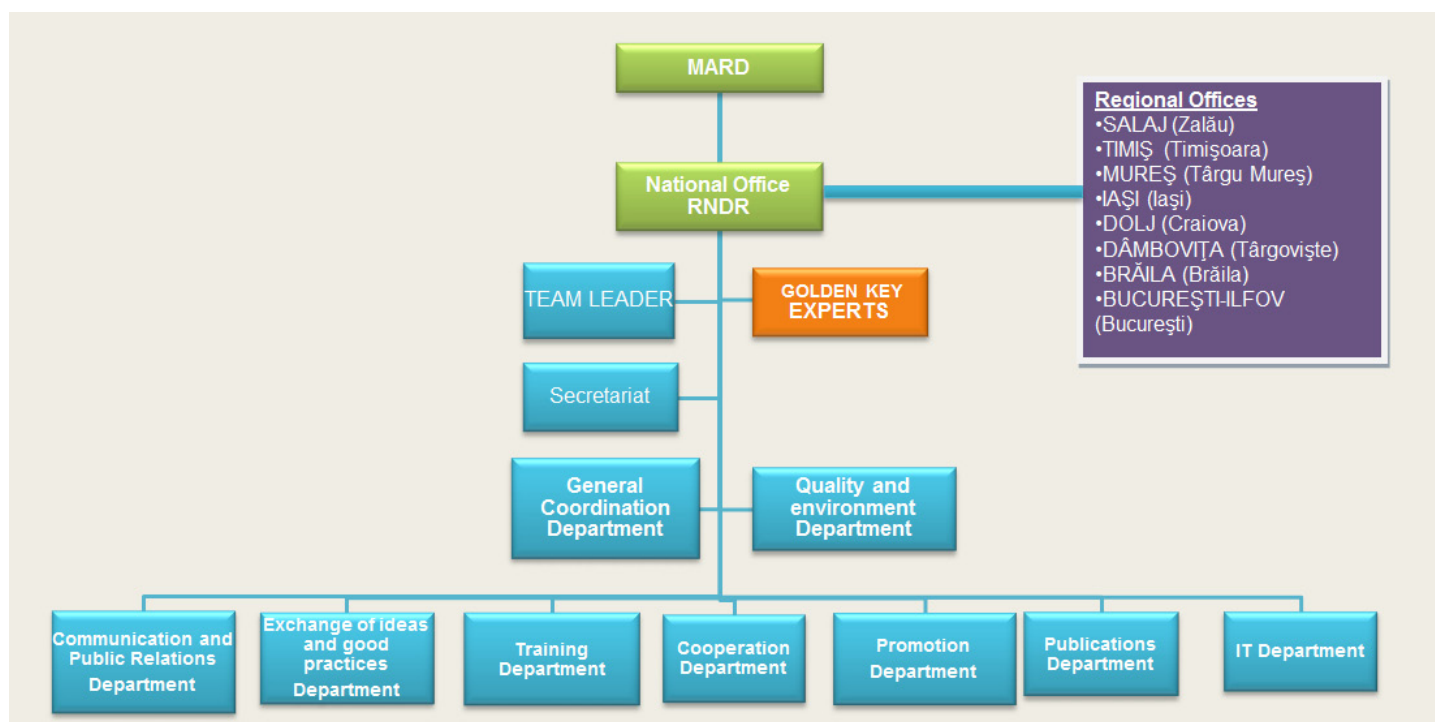
Participants in the Rural Network

- The network is characterized by an on-going formal membership open to the public sector, stakeholder organisations and individuals.
- Inscription is done through the following link: <http://www.rndr.ro/ChestionarInscriereMembri.aspx>.

Network Structure

- The Network Support Unit (NSU) is outsourced to the company Innovación y Desarrollo Local, S.L.
- The NSU operates at national level (centralized system), with its headquarter in Bucharest. The network has representations at regional level through 8 Regional Offices (in brackets the name of the town/city) in: Bucharest-Ilfov (Bucharest), Centre (Târgu Mureș), North-East (Iași), North-West (Zalau), South-East (Brăila), South- Muntenia (Târgoviste), South-West (Craiova), West (Timișoara).
- NSU's Human Resources include:
 - 31 members in the headquarters (full-time),
 - 24 in the Regional Offices
- The activities developed are: General Coordination, Support to the National Steering Committee and NRN Members, Thematic Expertise, Information about NRDP, Management of Virtual Community, Support for Exchange of Knowledge and Good Practices, LAGs Training & Counselling, Support for Inter-territorial and Transnational Cooperation, Management of participation in events, Management of Information Exchange with ENRD, EENRD and other NRN, Promotion of Groups of Producers, Traditional Products and Rural Tourism, Monitoring & Evaluation of NSU, Website Management, Organization of Events, Elaboration of Publications and Public Relations.

- Network organigram:



Network Management

- The management decisions in the network involve formal decision-making processes.
- The NSU assists this decision-making process by collecting information, organizing meetings, making preparatory documents and elaborating and submitting for approval the following documents: annual work program, initial, intermediate and final activity reports.
- The Ministry of Agriculture and Rural Development, through its Directorate General for Rural Development, acts as Managing Authority (MA) for NRDP. In this capacity, its main tasks are:
 - To work closely with all the stakeholders in establishing the NRDN;
 - To establish and chair the National Steering Committee (NSC) of the NRDN;
 - To establish, to fund the Support Unit of the Network (SUN) and to deal with the contractual relationship with the contractor.
- In order to carry out its tasks, the MA is supported in the territory by its representatives and the Agricultural Directorates for Rural Development (ADRD).
- The activities of the Network and of the NSU are coordinated by a National Steering Committee (NSC), chaired by MARD. The NSC members are the representatives of the main actor groups involved in the rural development process.
- The role of the National Steering Committee is:
 - to advise on priorities and themes within the activities of the Network and the work programme of the NSU;
 - to approve the Action Plan prepared by the MA taking into consideration the mandatory actions provided by the EC Regulation 1698/2005, Article 68, paragraph 2 (b), other additional mandatory actions which have to ensure the achievement of the objectives foreseen in the National Strategic Plan and the National Rural Development Programme, respectively, as well as actions which will be performed in response to the needs identified throughout the implementation process; this action plan will be learned and implemented by the NSU and will guide the elaboration of annual work programmes;
 - to advise the MA on the annual work programmes of the NSU, previous to their implementation by the NSU;
 - to receive and analyse the progress reports from the NSU;
 - to monitor the overall activity of the NSU and to consult the MARD within the framework of its role of MA for NRDP.

- The Support Unit of the Network (NSU) is one of the main elements of the National Rural Development Network. Its task is to animate the efficient flow of information regarding the National Rural Development Programme, to animate the exchange of ideas, good practices and cooperation between all the members of the Network and to grant specialised support for all the other elements of the NRDN, namely the Managing Authority, the members of the NRDN, the NSC, the LEADER Working Group, the Thematic Working Groups and the working groups of the experts. The NSU also maintains the specialized connection with the European Network for Rural Development (ENRD) and the National Networks in the EU Member States.

Network Budget for the period 2007–13

Network budget	€	Budget breakdown	€
Total network funds (Public Cost)	30.089.584	Total Network funds (Public Costs)	30.089.584
National co-finance	6.017.916,80	Work plan resources	22.576.188
EAFRD	24.071.667,20	Network running costs	7.522.396
EAFR Co-financing %	80 %	Others (if appropriate)	/