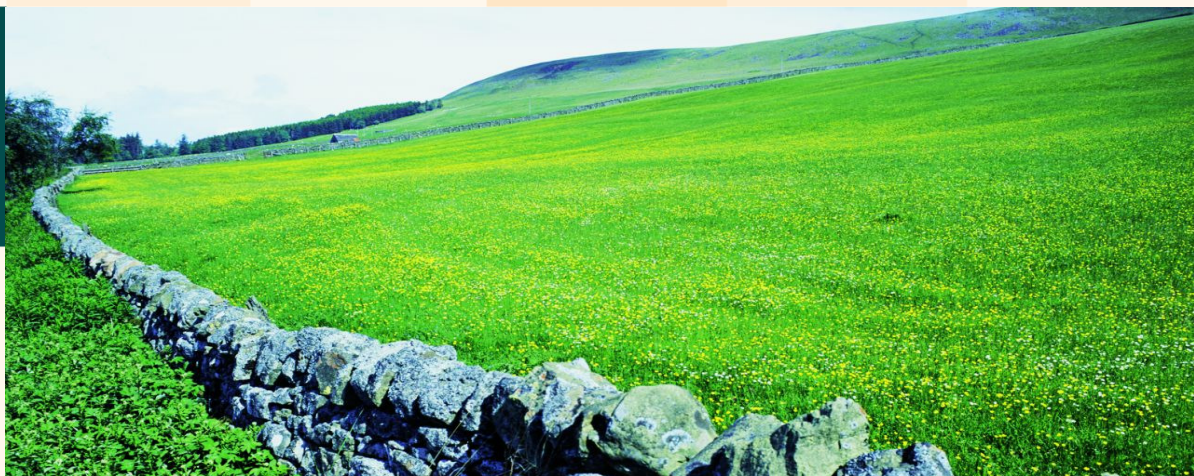




European Commission  
Agriculture and Rural Development



# **European Network for Rural Development 2007-2013: Legal framework and structures**

Presented by: John Lougheed

Coordination committee meeting – 01/10/2008



# Regulation 1698/2005

## Article 67



European Commission  
Agriculture and Rural Development

**A European Rural Development Network for the networking of national networks, organisations and administrations active in the field of rural development (in the framework of RD policy 2007-2013).**

### **Tasks:**

- **Analysis** : Collecting, analysing and disseminating information on RD measures;
- **Good rural development practice**
- **Information** : Providing information on developments in rural areas in the EU and 3<sup>rd</sup> countries;
- **Meeting points** : Organise meetings and seminars on RD at Community level;
- **Expert networks** : Setting up and running expert networks (evaluation of RD policy);
- **Technical support** : Supporting the national networks and transnational co-operation initiatives.



## Implementing rules for organisational structure:

- Commission Decision no 168 of 20 February 2008
  - 1) Coordination Committee
  - 2) Leader Sub-Committee
  - 3) Thematic working groups
  - 4) Evaluation expert committee

# 1) Coordination Committee



European Commission  
Agriculture and Rural Development

## Composition of Coordination Committee

- 27 from MS authorities
- 27 from national networks
- 12 from EU-wide organisations (among members of RD Advisory Group), max 4 from each RD objective:
  - improving the competitiveness of agriculture and forestry;
  - improving the environment and the countryside;
  - improving quality of life in rural areas and diversification of the rural economy.
- 2 from Leader sub-committee
- 1 from EU-wide LAG-s organisation

# 1) Coordination Committee



European Commission  
Agriculture and Rural Development

## Tasks of Coordination Committee

- **Assist** the Commission in the preparation and implementation of network activities;
- **Coordination** between the EN RD, national rural networks and organisations active in rural development at Community level;
- **Advise** the Commission on the **annual work programme** of EN RD, contribution to choice and coordination of thematic work;
- **Propose** the creation of thematic working groups.

## 2) Leader sub-Committee



European Commission  
Agriculture and Rural Development

### Leader sub-committee

- Composition (*same organisations as in the CC, but possibly different nominees*):
  - 27 MS authorities, 27 national networks
  - 12 organisations active in RD
  - 1 EU-wide organisation representing LAGs
- Contributes to the work of CC, concerning the Leader Axis
- Monitoring the implementation of transnational cooperation projects

### 3) Thematic groups



European Commission  
Agriculture and Rural Development

## Thematic working groups

- Defined mandate, chaired by a representative of the Commission.
- Max 15 members, designated by the Commission, taking into account proposals made by the Coordination committee.
- Regular reporting to the Coordination committee on the subjects covered by their mandate.
- Final report – to the Coordination Committee at max two years after creation

## 4) Evaluation expert committee



European Commission  
Agriculture and Rural Development

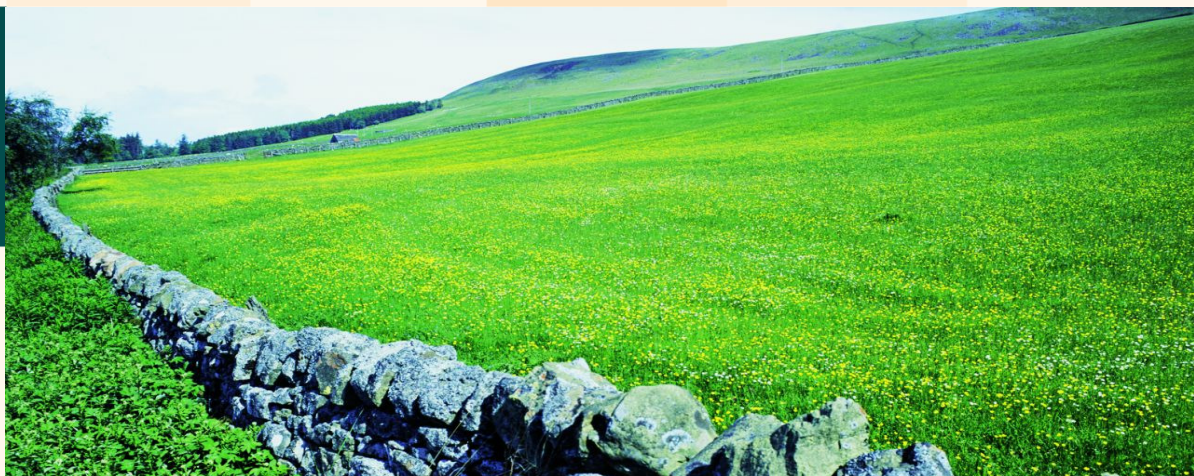
### The evaluation expert committee

- Shall follow the work of the Evaluation Expert Network
- NB:
  - ⇒ Different composition than CC (2 representatives from each national competent authority)
  - ⇒ Different contact point (Evaluation Help desk)
  - ⇒ Different management in AGRI (lead: AGRI/L.4)





European Commission  
Agriculture and Rural Development



# **The Contact Point of the European Network for Rural Development 2007-2013**

Coordination committee meeting – 01/10/2008

# The services of the Contact Point



European Commission  
Agriculture and Rural Development

## **Contact Point (CP) services:**

- ↳ Secretariat of ENRD structures + thematic groups
- ↳ Support to transnational cooperation
- ↳ Coordination with national networks
- ↳ Analysis of monitoring indicators
- ↳ Promotion and representation
- ↳ Good practices database

## **Communication tools :**

- ↳ Information line
- ↳ EN RD Website
- ↳ Extranet facility
- ↳ Seminars / conferences
- ↳ Publications (e-newsletter, periodicals, best practices, thematic publications)



## The consortium selected



European Commission  
Agriculture and Rural Development

**An association led by the Group of KANTOR Management Consultants S.A.**

**(Greece), including its subsidiaries**

- **LRDP KANTOR Ltd – UK,**
- **QWENTES KANTOR S.A. – Belgium,**
- **Kantor Doradcy w Zarzadzaniu Sp. Z o.o – Poland,**
- **KANTOR Management Consultants SRL – Romania and**
- **KANTOR Management Consultants EAD – Bulgaria,**

with subcontractors:

- Hushållningssällskapens Service AB (Sweden),
- IEEP – Institute for European Environmental Policy (UK),
- CIHEAM – Institut agronomique méditerranéen de Montpellier (France),
- Agriculture Science and Engineering Centre of Debrecen University (Hungary),
- Agriconsulting Europe S.A. (Belgium)



## The team of the Contact Point (CP)



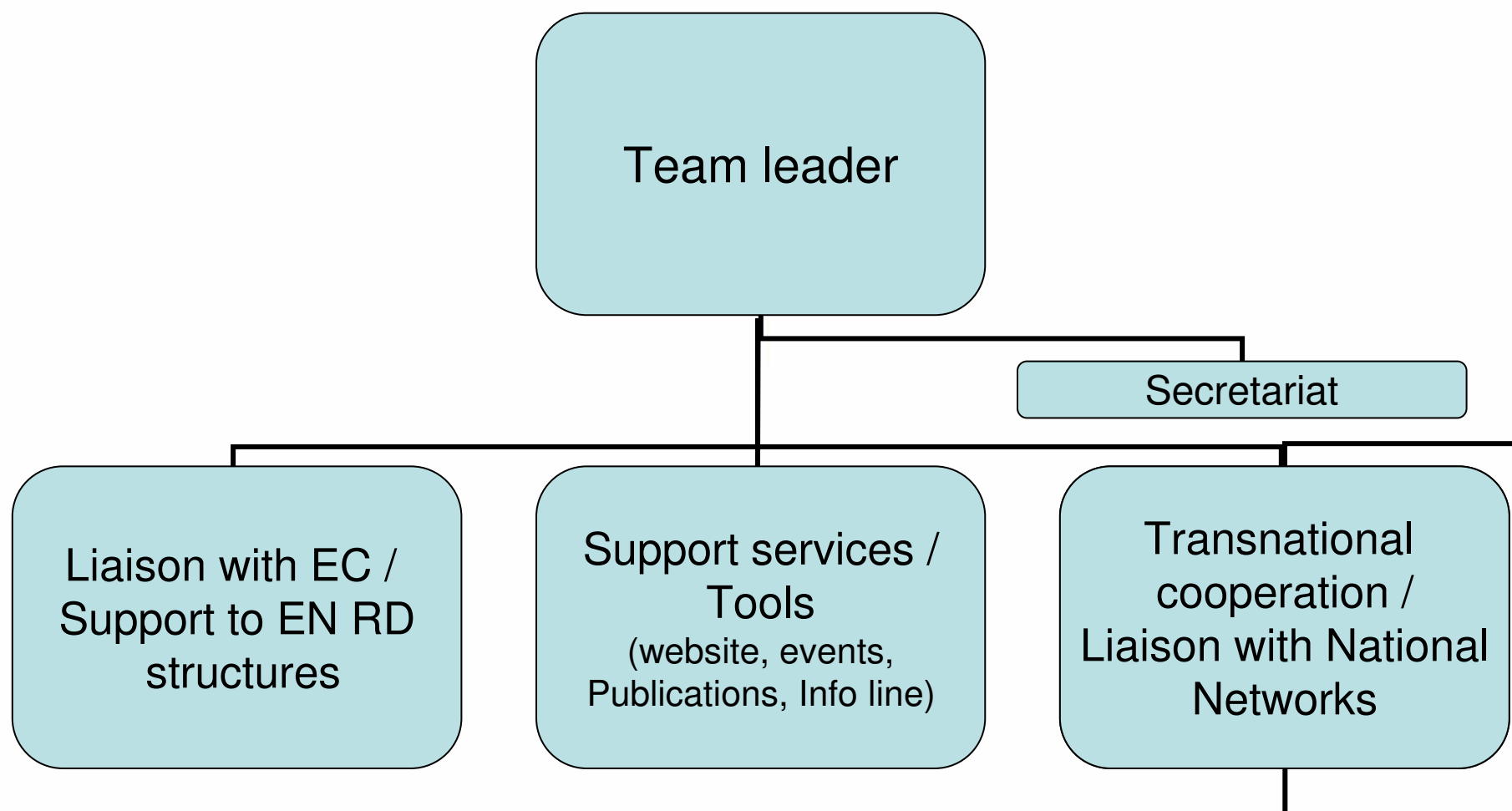
European Commission  
Agriculture and Rural Development

- Brussels based:
  - Offices and info point: Rue du Marteau 81, in close proximity to DG AGRI
  - Meeting room facilities
- Human resources:
  - 21 permanent staff
  - A pool of non-permanent experts
  - A team organised around three groups, each with allocated responsibility for the different services and tools

# The team structure of the Contact Point

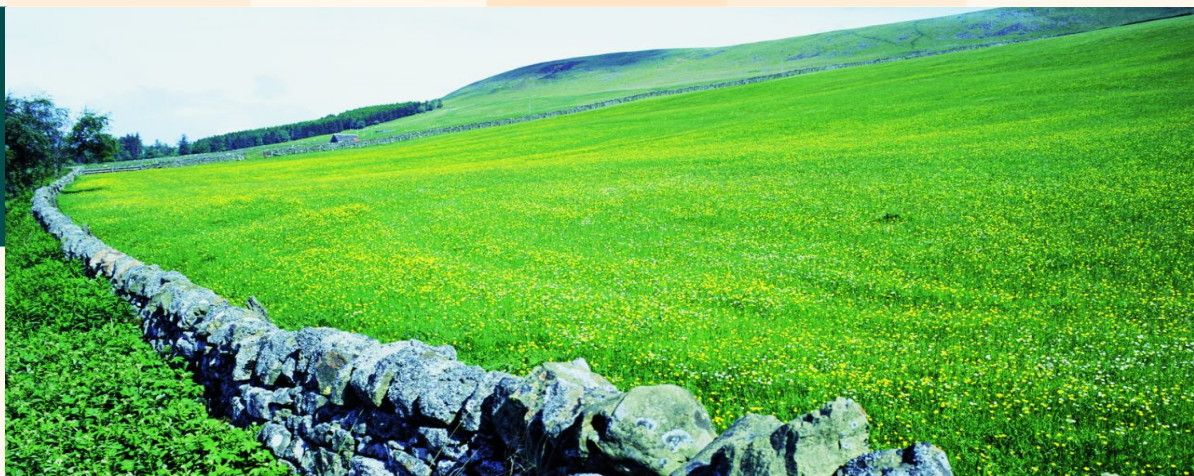


European Commission  
Agriculture and Rural Development





European Commission  
Agriculture and Rural Development



# Overall structure of the European Network for Rural Development

Coordination committee meeting – 01/10/2008



