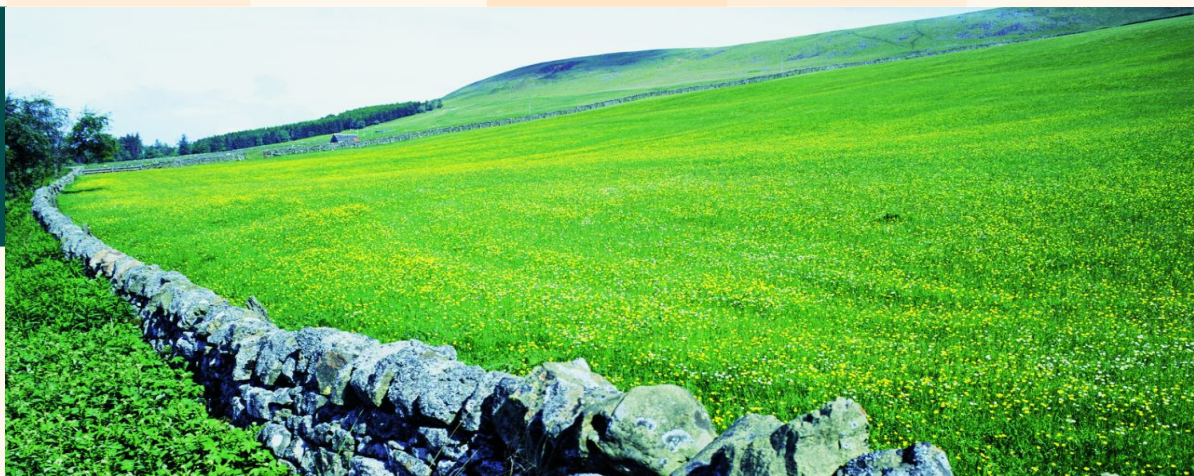




European Commission
Agriculture and Rural Development



European Network for Rural Development 2007-2013: organisation and specific activities 2008-2009

by Gaëlle Lhermitte, DG AGRI

(1) Legal framework

Leader subcommittee – 26/11/2008



Regulation 1698/2005

Article 67



European Commission
Agriculture and Rural Development

A European Network for Rural Development for the networking of national networks, organisations and administrations active in the field of rural development (in the framework of RD policy 2007-2013).

Aims:

- To collect, analyse and disseminate information on RD measures;
- To consolidate Good rural development practice
- To provide information on developments in rural areas;
- To organise meetings and seminars;
- To set-up and rural expert networks (notably for evaluation);
- To support the national networks and transnational co-operation initiatives.



Implementing rules for organisational structure:

- Commission Decision no 168 of 20 February 2008
 - 1) Coordination Committee
 - 2) Leader Sub-Committee
 - 3) Thematic working groups
 - 4) Evaluation expert committee



Coordination Committee

- 69 members:
 - 27 from MS authorities
 - 27 from national networks
 - 12 from EU-wide organisations
 - **2 from Leader sub-committee**
 - 1 from EU-wide LAG-s organisation

- Tasks:
 - **To assist** the Commission in the preparation and implementation of network activities;
 - **To ensure coordination** between the EN RD, national rural networks and organisations active in rural development at Community level;
 - **To advise** the Commission on the **annual work programme** of EN RD, contribution to choice and coordination of thematic work;
 - **To propose** the creation of thematic working groups.



Leader sub-committee

- Composition, 67 members (*same organisations as in the CC, but possibly different nominees*):
 - 27 MS authorities, 27 national networks
 - 12 organisations active in RD
 - 1 EU-wide organisation representing LAGs



Tasks of the Leader subcommittee

- to contribute to the work of the Coordination committee;
- to advise the Commission on the annual work programme of the EN RD concerning the Leader axis and contribute to the choice and coordination of thematic work in this field;
- to support the Commission in monitoring the implementation of transnational cooperation projects;
- to regularly report to the Coordination committee on its activities.



Thematic working groups

- Defined mandate, chaired by a representative of the Commission.
- Max 15 members, designated by the Commission, taking into account proposals made by the Coordination committee.
- Regular reporting to the Coordination committee on the subjects covered by their mandate.
- Final report – to the Coordination Committee at max two years after creation

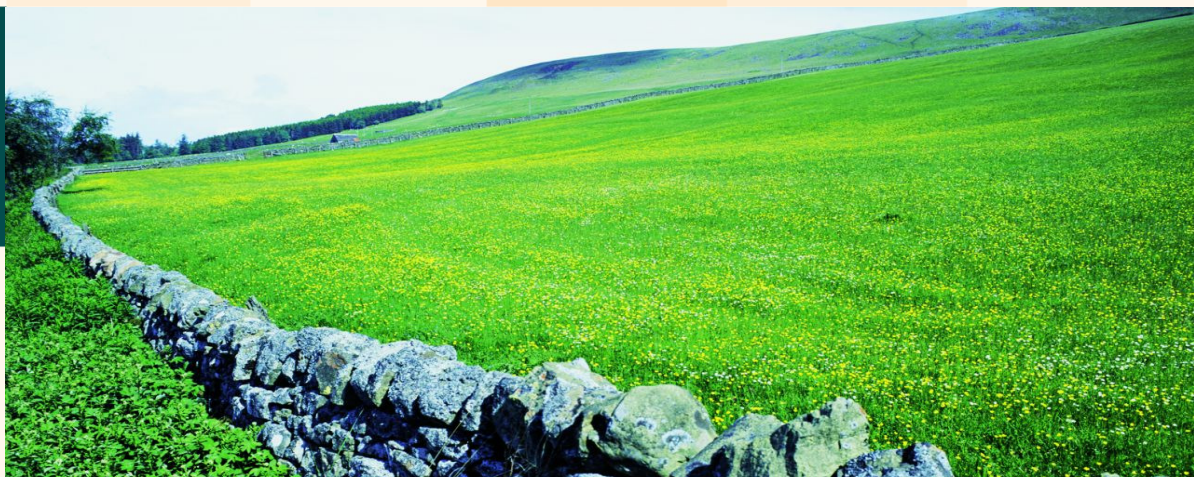


The evaluation expert committee

- Shall follow the work of the Evaluation Expert Network
- NB:
 - ⇒ Different composition than CC (2 representatives from each national competent authority)
 - ⇒ Different contact point (Evaluation Help desk)
 - ⇒ Different supervision in AGRI (lead: AGRI/L.4)



European Commission
Agriculture and Rural Development

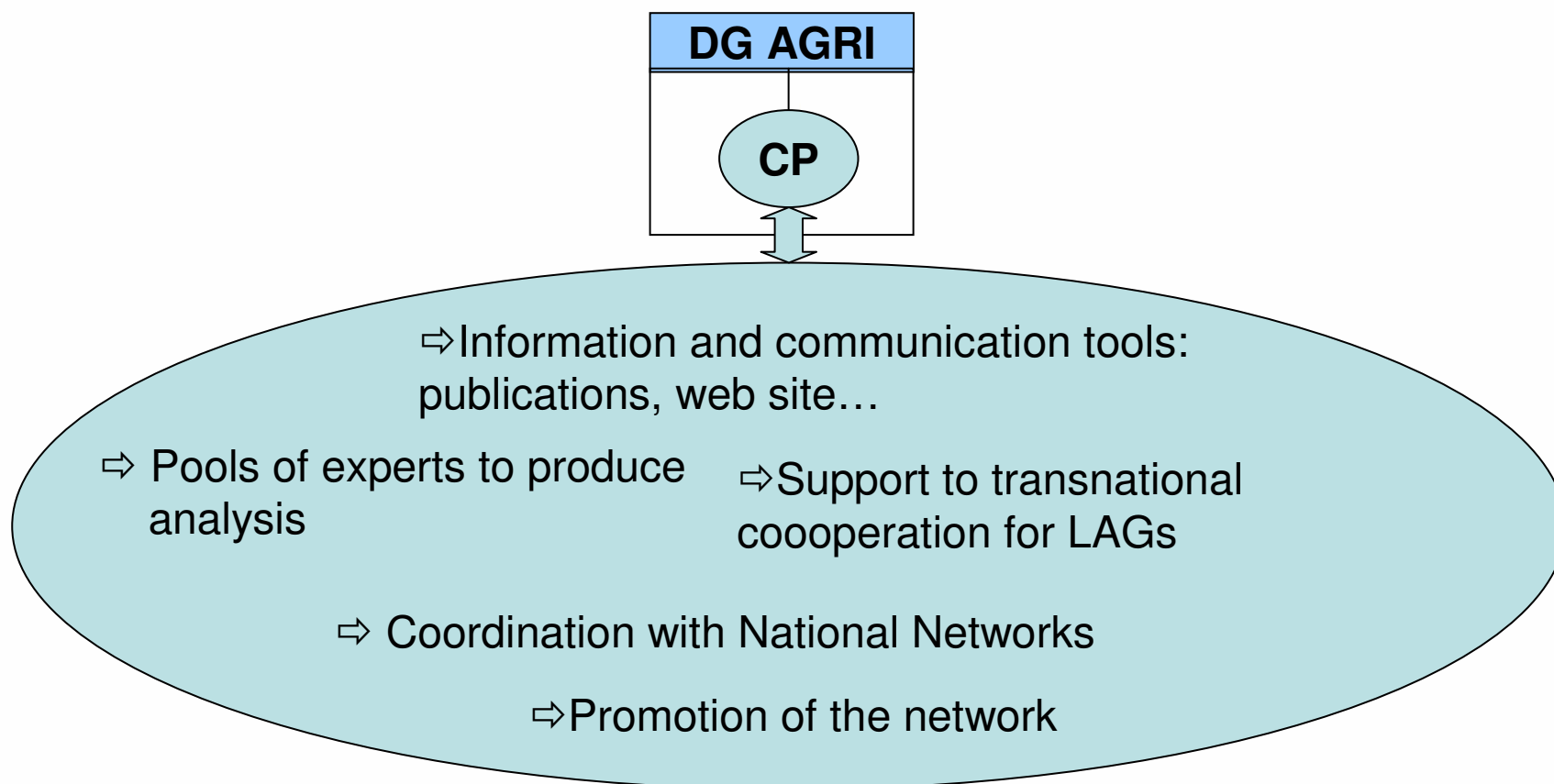


(2) The Contact Point of the European Network for Rural Development 2007-2013

Leader subcommittee – 26/11/2008



The CP will be the operational instrument of the network





The consortium selected



European Commission
Agriculture and Rural Development

An association led by the Group of KANTOR Management Consultants S.A.

(Greece), including its subsidiaries

- **LRDP KANTOR Ltd – UK,**
- **QWENTES KANTOR S.A. – Belgium,**
- **Kantor Doradcy w Zarzadzaniu Sp. Z o.o – Poland,**
- **KANTOR Management Consultants SRL – Romania and**
- **KANTOR Management Consultants EAD – Bulgaria,**

with subcontractors:

- Hushållningssällskapens Service AB (Sweden),
- IEEP – Institute for European Environmental Policy (UK),
- CIHEAM – Institut agronomique méditerranéen de Montpellier (France),
- Agriculture Science and Engineering Centre of Debrecen University (Hungary),
- Agriconsulting Europe S.A. (Belgium)



The team of the Contact Point (CP)



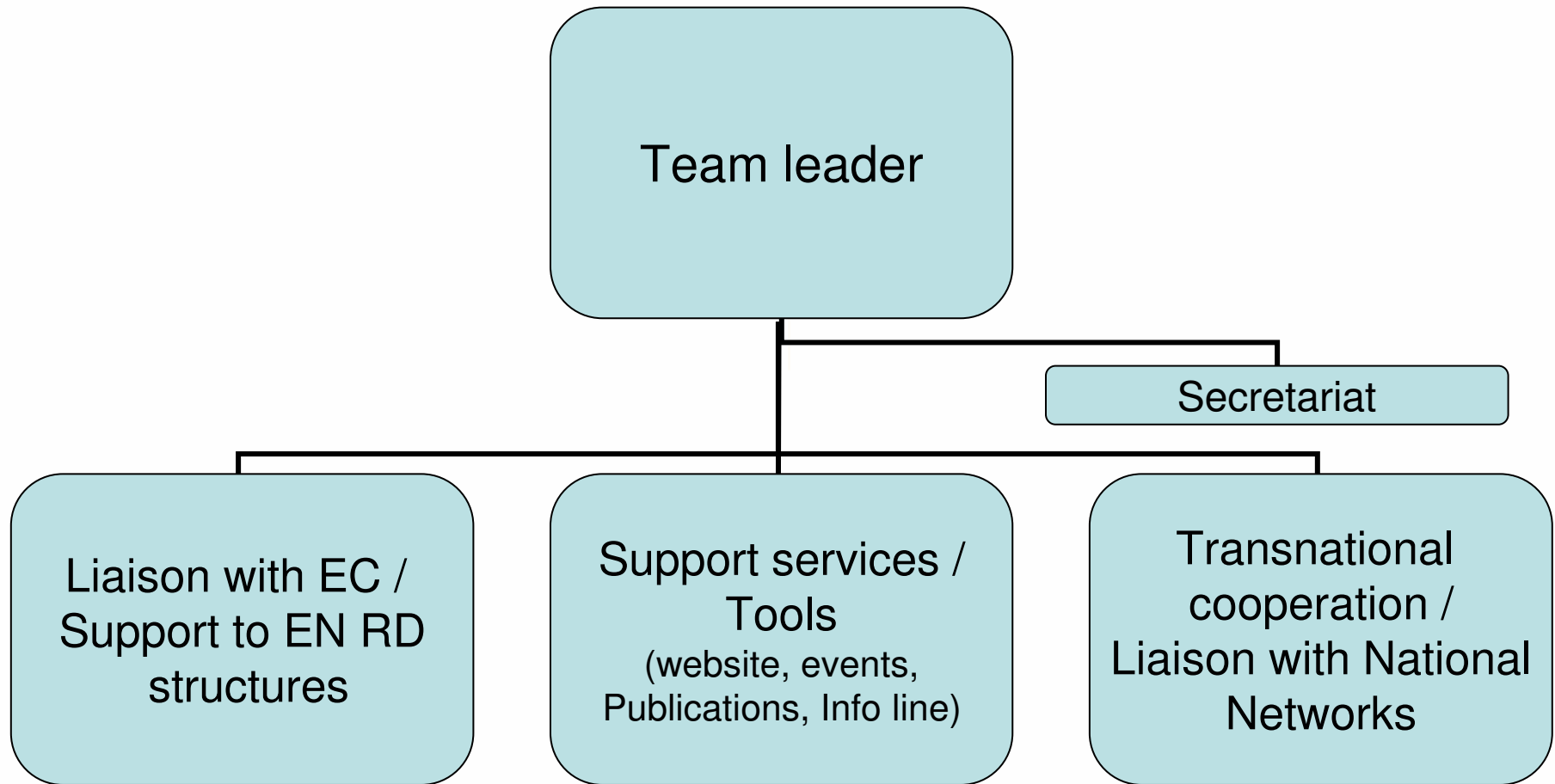
European Commission
Agriculture and Rural Development

- Brussels based:
 - Offices and info point: Rue du Marteau 81, in close proximity to DG AGRI
 - Meeting room facilities
- Human resources:
 - 21 permanent staff
 - A pool of non-permanent experts
 - A team organised around three groups, each with allocated responsibility for the different services and tools

The team structure of the Contact Point

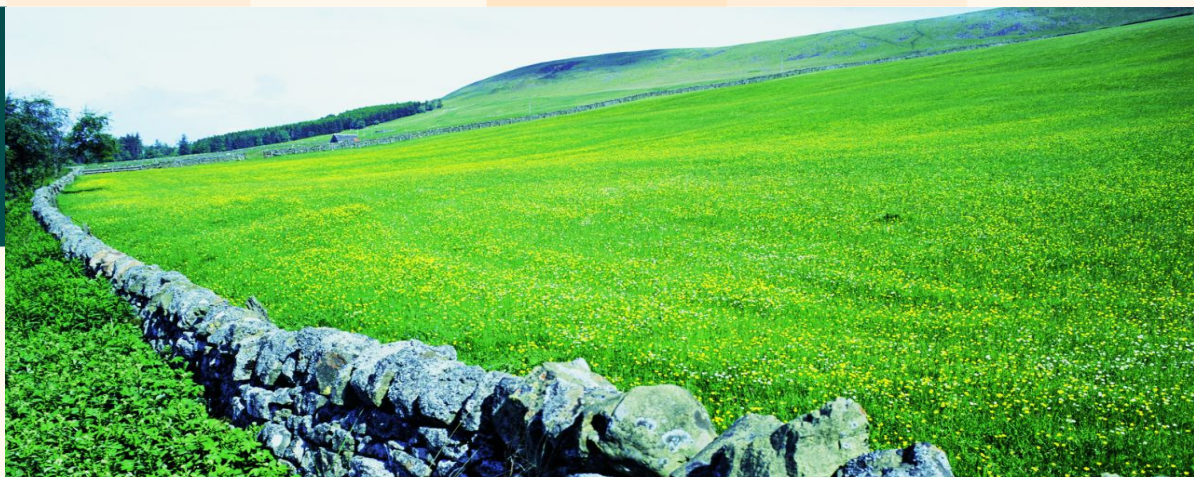


European Commission
Agriculture and Rural Development



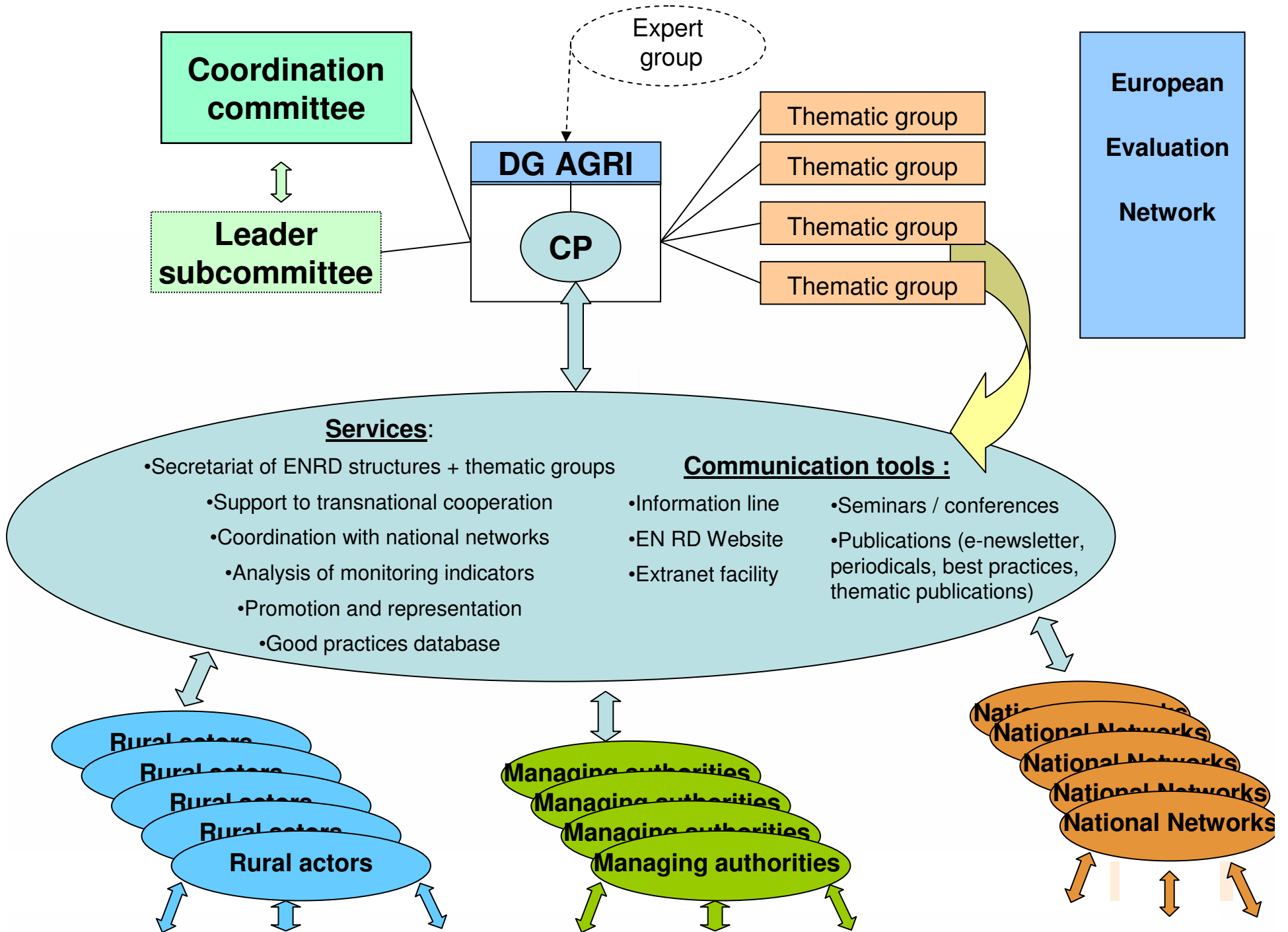


European Commission
Agriculture and Rural Development



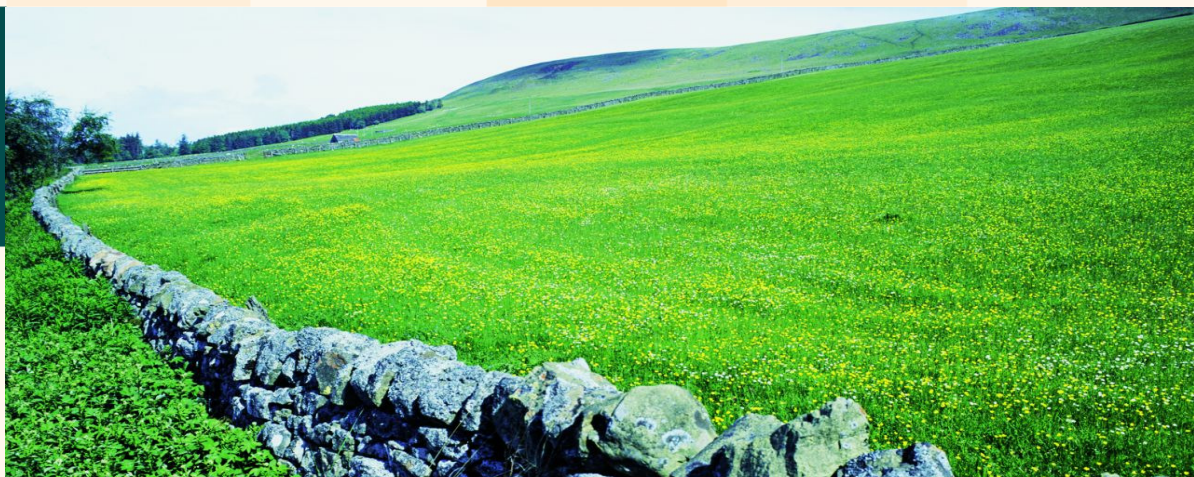
(3) Overall structure of the European Network for Rural Development

Leader subcommittee – 26/11/2008





European Commission
Agriculture and Rural Development



(4) The proposed specific activities **2008-2009**

Leader subcommittee – 26/11/2008



1) State of play and current steps:



European Commission
Agriculture and Rural Development

- **Outcomes of the coordination Committee first meeting on 1st October :**
 - Preliminary state of play on the establishment of NRNs / first exchanges
 - Launch of 2 thematic working groups + proposal for 1 to be launched later
 - Agreement on 3 seminars in 2009



1) State of play and current steps:



European Commission
Agriculture and Rural Development

- **Public presentation at the Cyprus conference on 17 October :**
 - Objectives and structures of the EN RD
 - Activities 2008-2009
 - Challenges of the EN RD



1) State of play and current steps:



European Commission
Agriculture and Rural Development

- **Progressive launching of the services and tools of the Contact Point**
- **Coordination and consultation with NRNs:**
 - meeting with the Contact Point on 27/11
 - Questionnaires of the Contact Point...



1) State of play and current steps:



European Commission
Agriculture and Rural Development

■ Leader subcommittee today:

- to contribute to the progressive setting-up of the different structures of EN RD,
- to make proposals to better integrate the needs related to the implementation of the Leader Axis;
- to exchange already experience at national level (mainstreaming, national networks support to the Leader Axis),
- to review the progress on implementation of Leader axis.

2) Creation of thematic groups



European Commission
Agriculture and Rural Development

Theme 1: Targeting territorial specificities and needs in RD programmes (preparation on-going)

(An efficient targeting of territorial specificities and needs in RD programmes and a more balanced development of rural areas across Europe)

Theme 2: Agriculture and the wider rural economy (preparation on-going)

(Identification and description of the relationships and potential synergies/conflicts between, on the one hand, agriculture and, on the other hand, the wider rural economy).

Theme 3: Public goods and public intervention (for later launch)

(How RD interventions can enhance the provision of public goods for the benefit of society).

Thematic Working Groups indicative timeframe (TWG 1 and 2)



European Commission
Agriculture and Rural Development

1) Proposals of members for the TWG by CC members → end October

2) Setting up of the TWG 1 and 2 → ~December 2008

- Chairmen (AGRI)
- Members (selection from proposals by the CC members)
- Experts of the Contact Point.

3) Final mandate, work plan and launch of work → beginning 2009

- To be agreed at the first meeting of the TWG.



3) Specific seminars in 2009



European Commission
Agriculture and Rural Development

- 1. Seminar on « Capacity building – setting-up of the national networks »** (beginning of April 2009)
(preparation on-going)
- 2. Seminar on « Innovation for the new environmental challenges »**
(2d semester 2009 – to be confirmed).
- 3. Seminar on « Modernisation of semi-subsistence farms »**
(2d semester 2009 – to be confirmed).

4) An expert group on Policy delivery and governance



European Commission
Agriculture and Rural Development

A group of experts shall:

- work on the identification of efficient delivery mechanisms and good practices in the implementation of RD programmes;
- describe the lessons learned with respect to improving governance of RD policy.

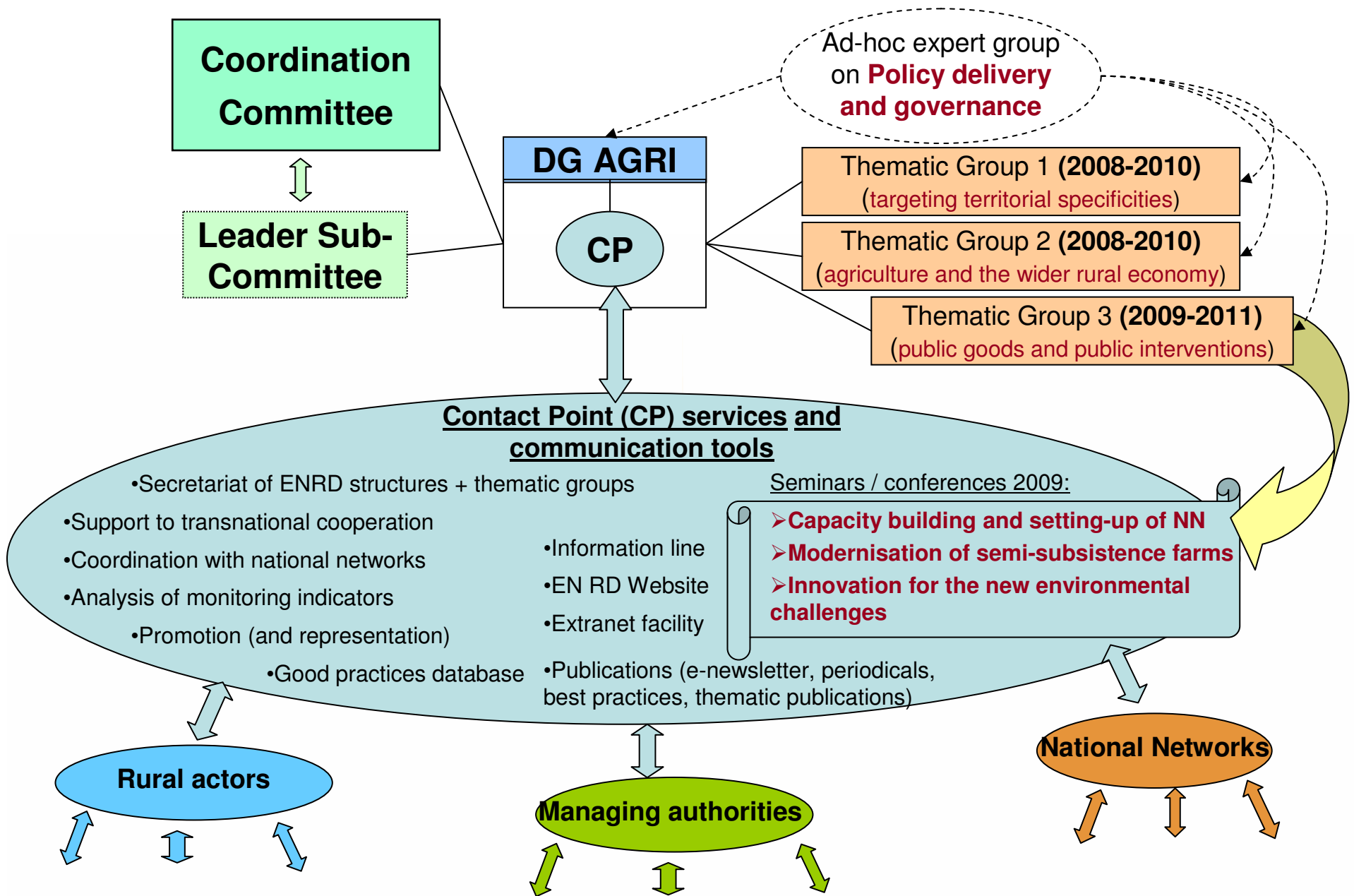
It would work in parallel with the thematic working groups, using their results and providing them with insights on delivery mechanisms and governance.

Its action plan would be drafted by the Commission.



European Commission
Agriculture and Rural Development

Overall view of the specific thematic activities 2008-2009





European Commission
Agriculture and Rural Development

Thank you for your attention