



European Commission
Agriculture and Rural Development



Thematic Working Group 1 ***Targeting territorial specificities and needs in*** ***Rural Development Programmes***

Rob Peters , Peggy Dieryckxvisschers

DG AGRI

Brussels, 09 December 2009



CONTENTS



European Commission
Agriculture and Rural Development

- Overview of the workplan
- Progress to date – outcomes of step 1 report
- Next steps



European Commission
Agriculture and Rural Development

OVERVIEW OF THE WORKPLAN

General Objective of TWG1

“To contribute, through relevant analyses and the diffusion of their results, to an efficient targeting of territorial specificities and needs in Rural Development programmes and to a more balanced development of rural areas across Europe.”



OVERVIEW OF THE WORKPLAN

Phase 1: March 2009 - March 2010

Phase 2: March 2010 - early 2011

Scope of Phase 1:

- **Step 1: Understanding how MS in their RDPs**
 - have defined rural areas (RA);
 - have targeted rural areas, territorial specificities

- **Step 2: Understanding**
 - how MS have assessed the needs of rural areas;
 - How MS have applied measures and allocated resources to meet those needs;
 - what strategies MS have followed concerning complementarity or demarcation with other national and Community instruments.

- **Step 3: Common analysis**



European Commission
Agriculture and Rural Development

PROGRESS TO DATE – OUTCOMES OF STEP 1 REPORT

- Desk analysis of programming documents
- 23 national RDPs and national strategy documents
- 12 sub national: BE, UK full coverage; ES, DE – three regions in each country
- Overview definitions/indicators used
- Initial conclusions on baseline indicators 1 and 2





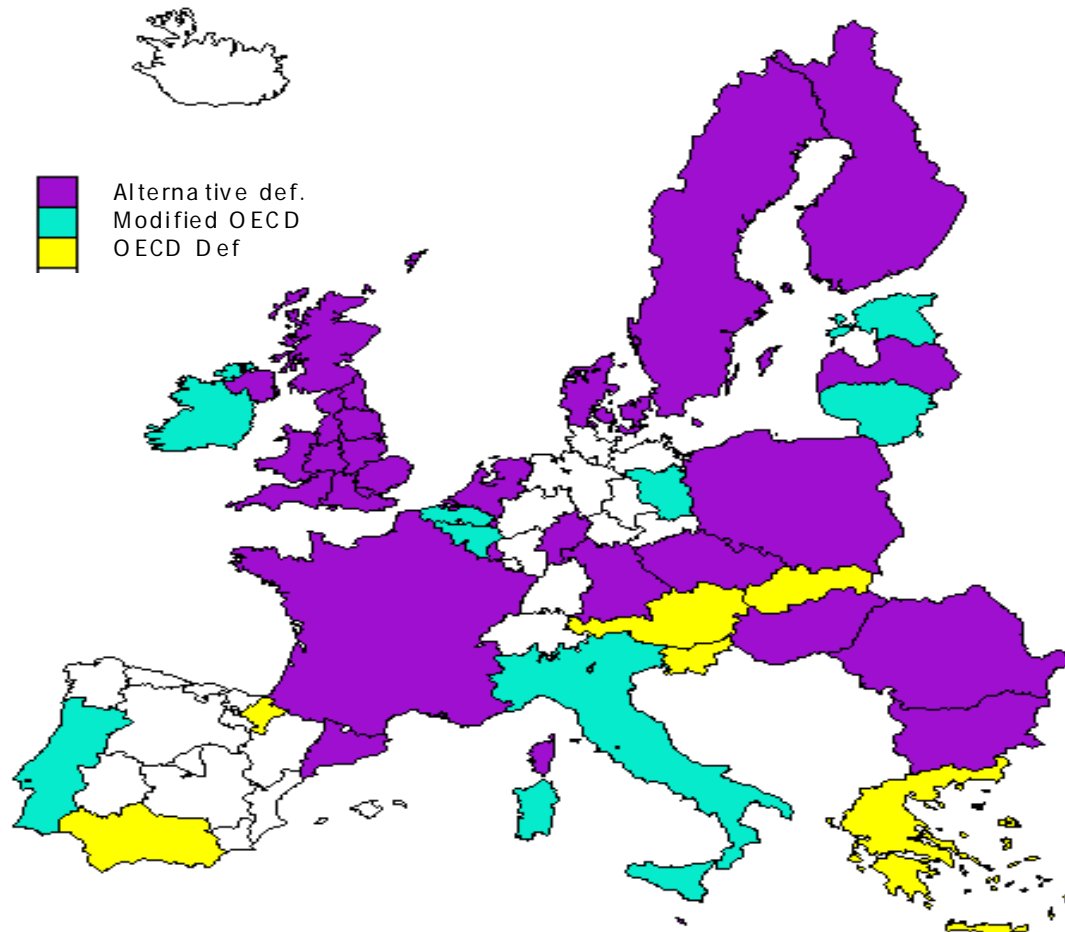
PROGRESS TO DATE – OUTCOMES OF STEP 1 REPORT

- *DEFINITION OF RURAL AREAS APPLIED IN RDPs*
 - OECD definition in 6 RDPs
 - Modified definition in 7 RDPs
 - Alternative definitions in 22 RDPs



European Commission
Agriculture and Rural Development

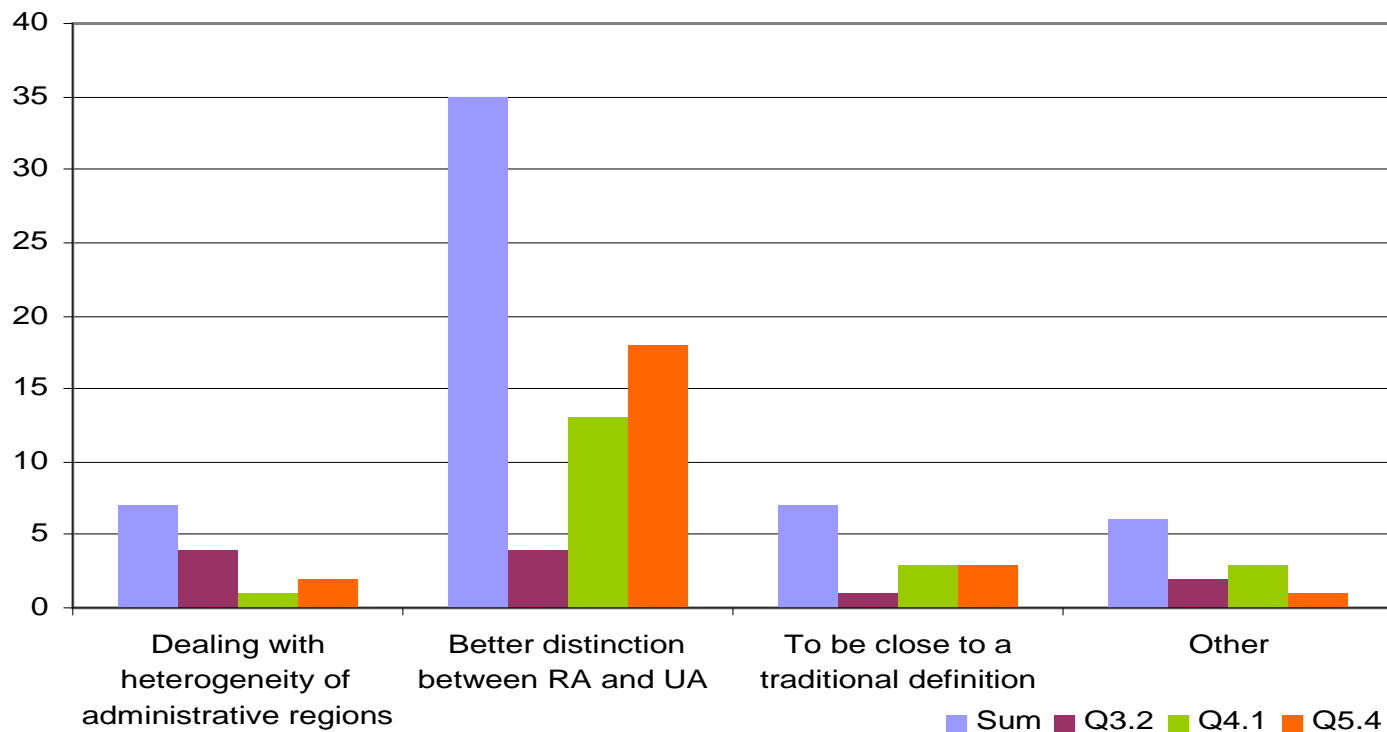
PROGRESS TO DATE – OUTCOMES OF STEP 1 REPORT





PROGRESS TO DATE – OUTCOMES OF STEP 1 REPORT

■ REASONS FOR CHOSING ALTERNATIVE APPROACHES



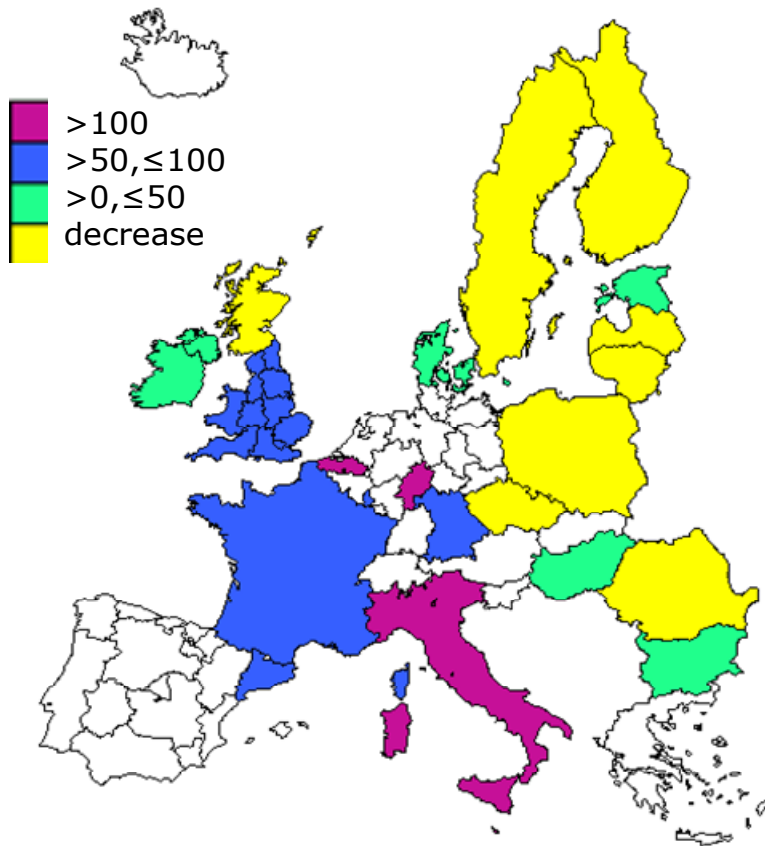
PROGRESS TO DATE – OUTCOMES OF STEP 1 REPORT



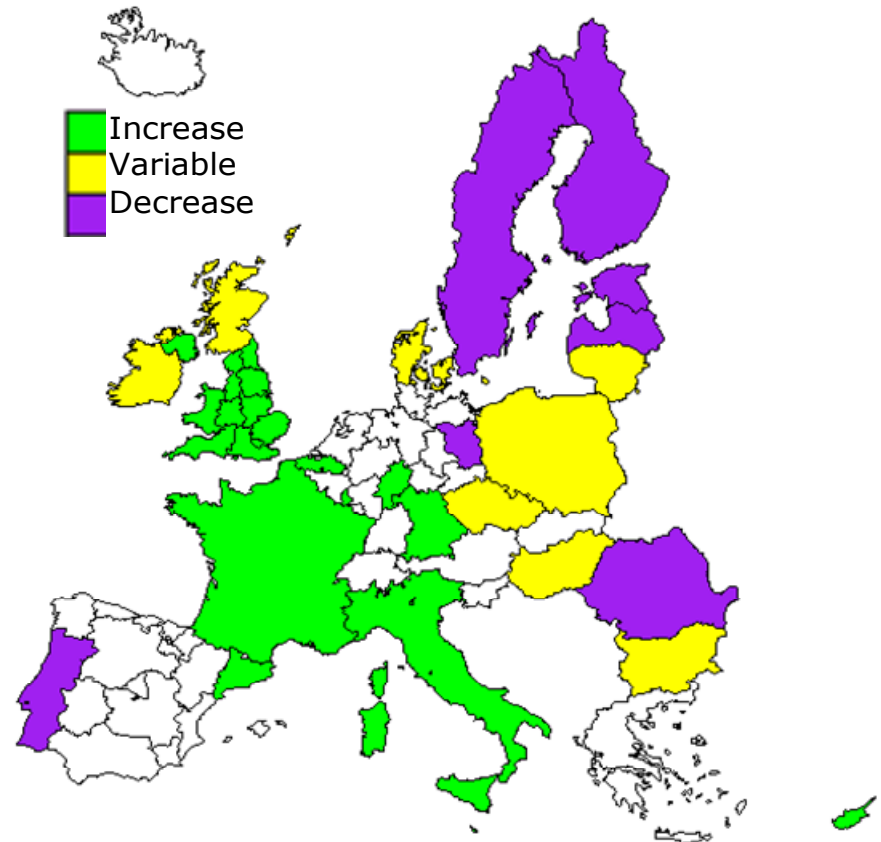
European Commission
Agriculture and Rural Development

■ THE EFFECT OF ALTERNATIVE DEFINITIONS

Change of population included in rural areas under alternative definitions comparing to OECD definition



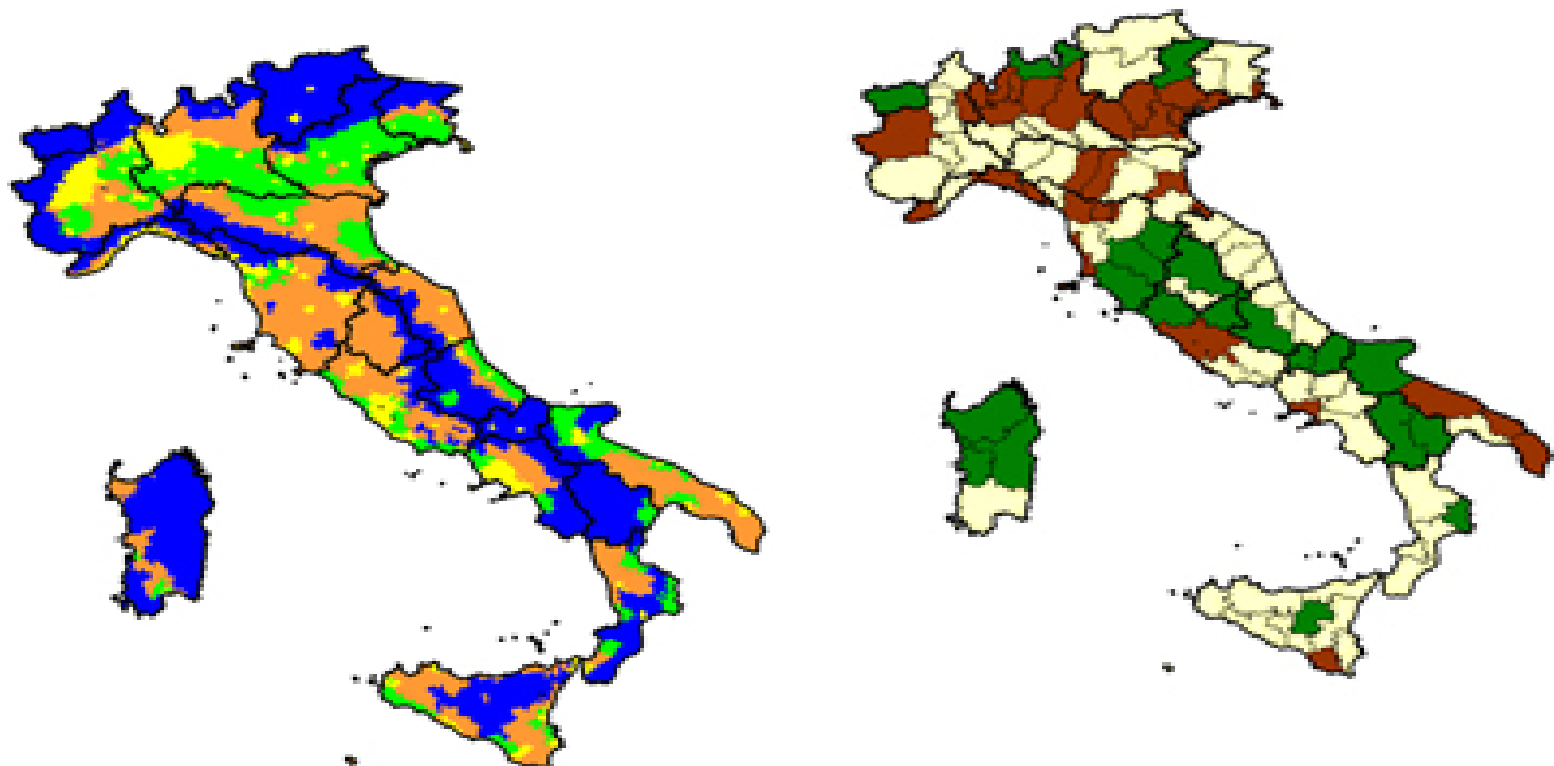
Change of the extent of rural areas under alternative definitions comparing to OECD definition using combination of available indicators (territory, population and number of local units)





PROGRESS TO DATE – OUTCOMES OF STEP 1 REPORT

EXAMPLE OF DEFINITIONAL CHANGE: ITALY



- Urban poles
- Rural areas with specialised intensive agriculture
- Intermediate rural areas
- Rural areas with comprehensive development problems

- predominantly rural
- predominantly urban
- significantly rural

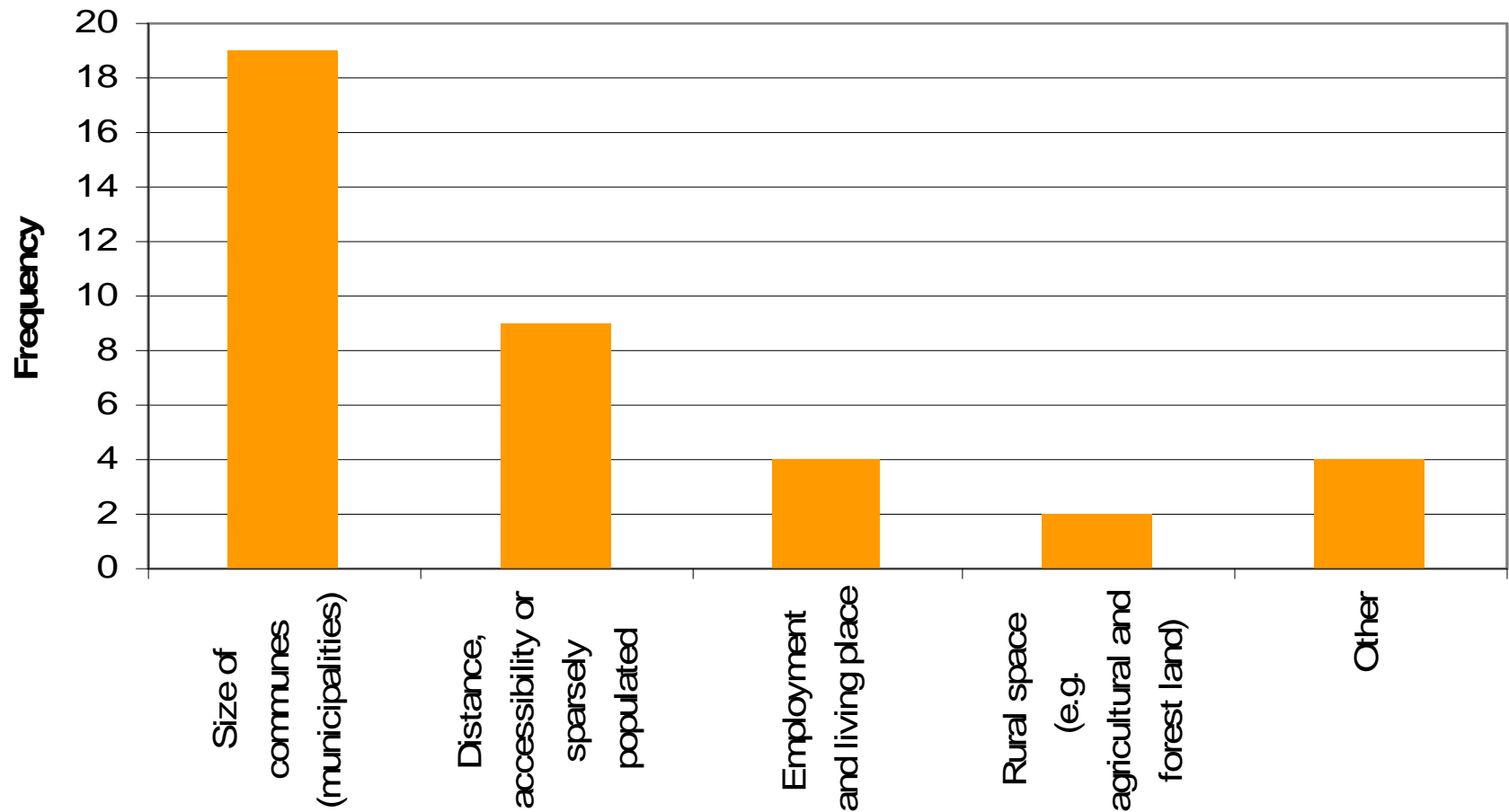


PROGRESS TO DATE – OUTCOMES OF STEP 1 REPORT

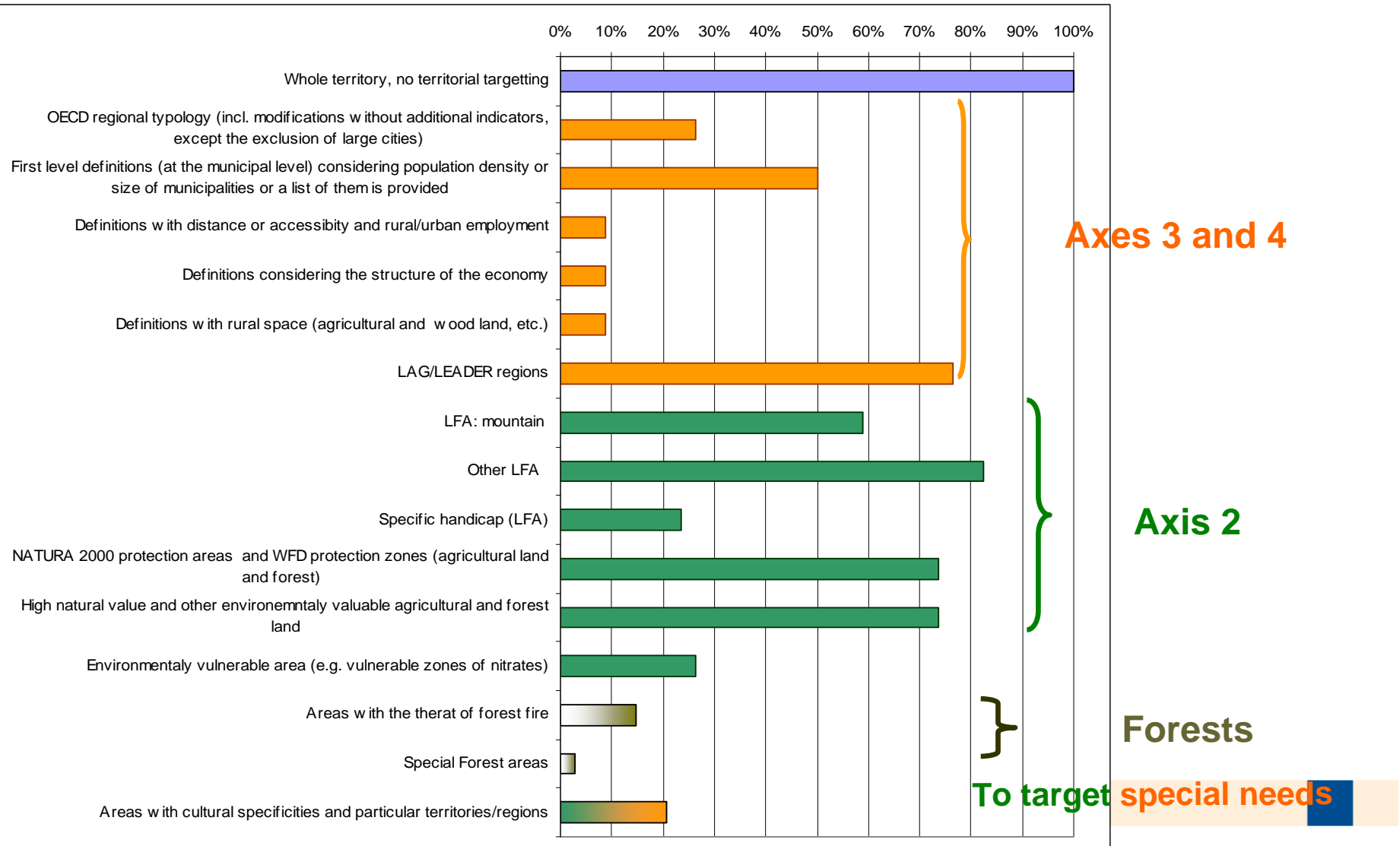
- *PARAMETERS OF MODIFICATIONS AND ALTERNATIVES*
 - Primary definition level
 - *Usually LAU2*
 - *LAU1 or NUTS3*
 - Additional factors
 - *Size (population)*
 - *Remoteness*
 - *Employment and living place*
 - *Rural space*
 - *Other reflecting special needs*
 - Richer typologies



PROGRESS TO DATE – OUTCOMES OF STEP 1 REPORT



PROGRESS TO DATE – OUTCOMES OF STEP 1 REPORT



PROGRESS TO DATE – OUTCOMES OF STEP 1 REPORT



European Commission
Agriculture and Rural Development

- INITIAL CONCLUSIONS OF STEP 1
 - The role of the definition of rural areas is not universally clear
 - The definition is not used rigorously in the RDPs
 - Dissatisfaction with the OECD approach
 - *Geographical characteristics*
 - *Policy issues*



European Commission
Agriculture and Rural Development

NEXT STEPS

Completion of Step 2

- ***Finalisation of a set of case studies examining:***
 - the definition of rural areas – assessment of needs
 - the pattern of targeting (application of measures and allocation of resources)
 - taking into account complementarity and demarcation
 - efficiency and balance
- ***Report : Comparative and synthetic overview***



NEXT STEPS

Step 3 (completion of Phase 1)

- ***Findings on relevance and efficiency of targeting in the programmes***
- ***Common elements in identifying specificities***
- ***Recommandations for achieving a better balance***

Phase 2

- ***forward looking exercise***
- ***development of recommendations of relevance to rural development policy at EU level***
- ***tapping the potential for synergies and complementarities between Community instruments at territorial level,***



European Commission
Agriculture and Rural Development



Thank you for your attention!