



LEADER Event 2013: Building Bridges for the Future, 17-18 April

LEADER event follow up
in support of programming for
LEADER

Marina Brakalova, ENRD CP



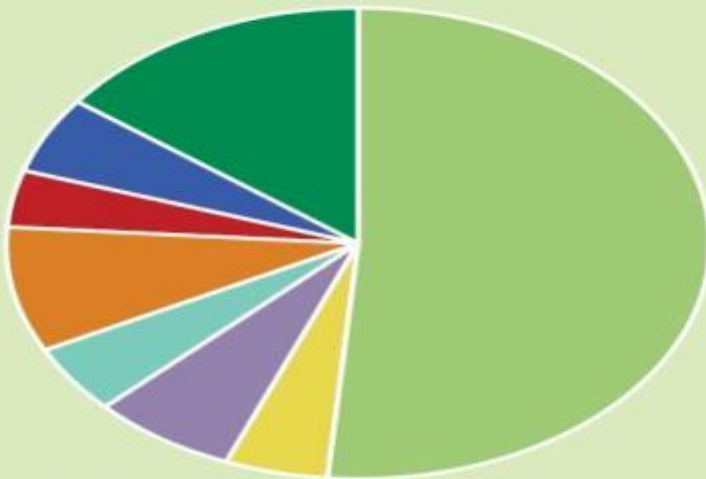
Objectives of the session

- **Share observations** from the LEADER event discussions and results
- **Suggest and discuss possible follow up** activities to support programming of LEADER

Support LEADER programming



474 People representing
34 countries participated
in the LEADER event.

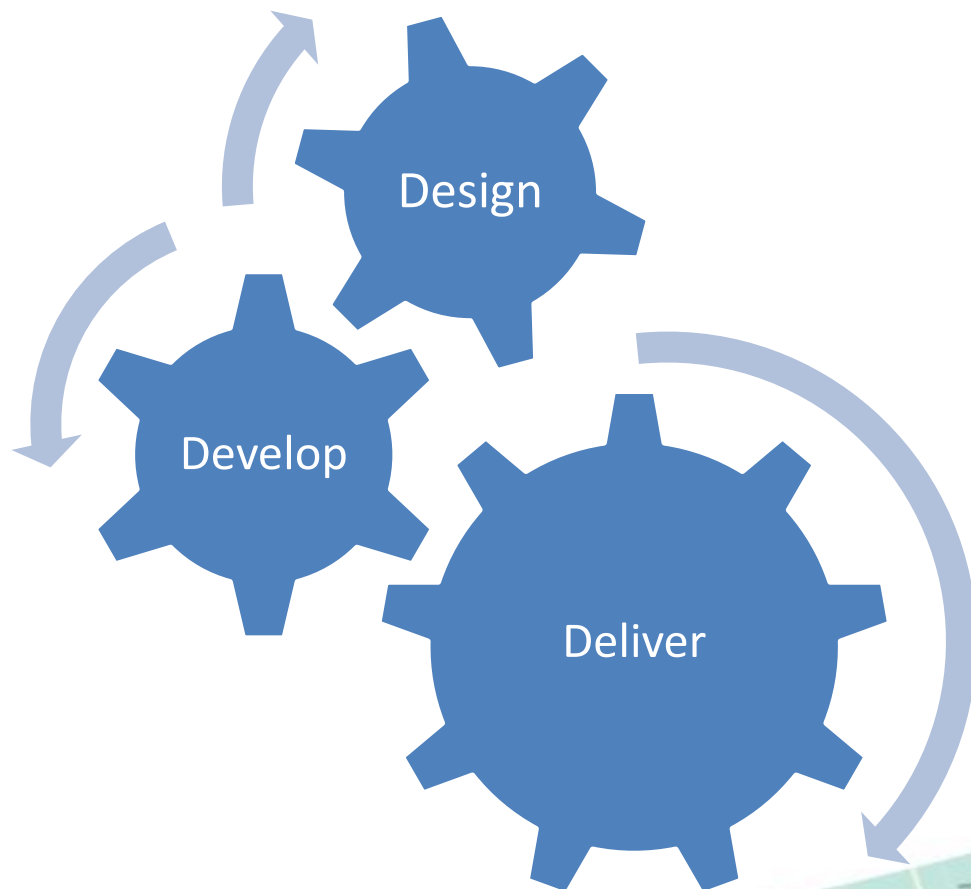


A wide range of
STAKEHOLDERS
participated:

With the aim to bridge
between:

- experiences
- programming periods
- countries
- stakeholders
- etc

Focus themes and more than 30 topics



KEY Messages and their relevance for programming

- Apply principles of **LEADER** across the entire Programme
- Define and capture **added value**
- Put an importance to **animation and evaluation**



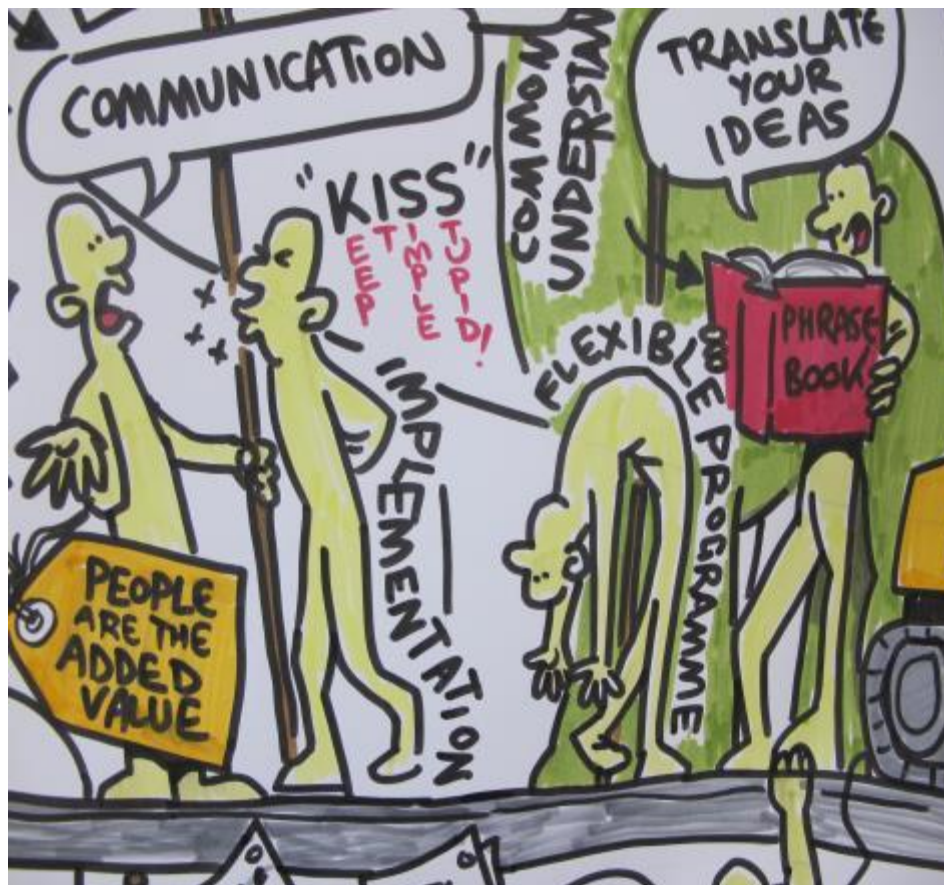
KEY Messages and their relevance for programming

- **Recurring** challenges
- **Clearly** define **roles**
- **Flexibility** and **Simplification** needed

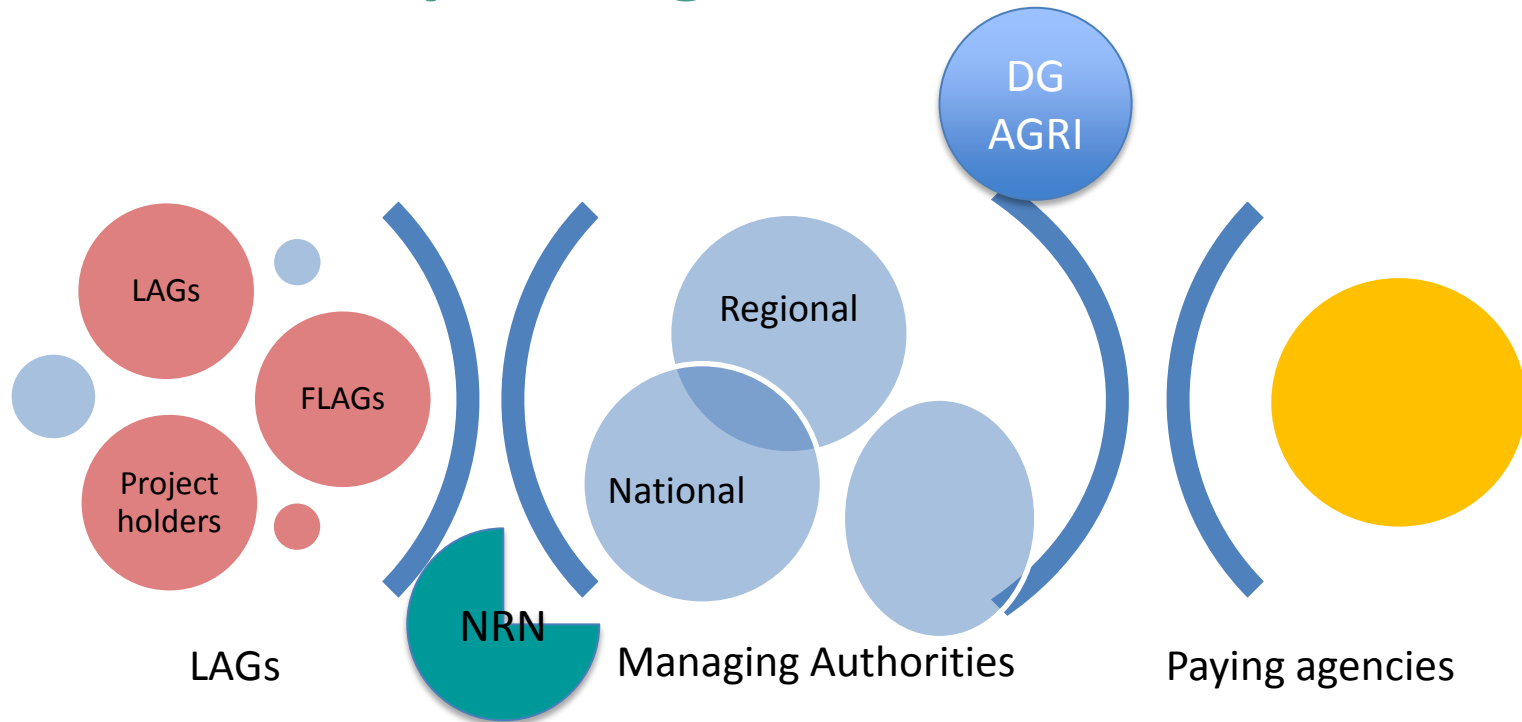


KEY Messages and their relevance for programming

- Consultation mechanisms
- Information and guidance/advice needed
- Communication and exchange



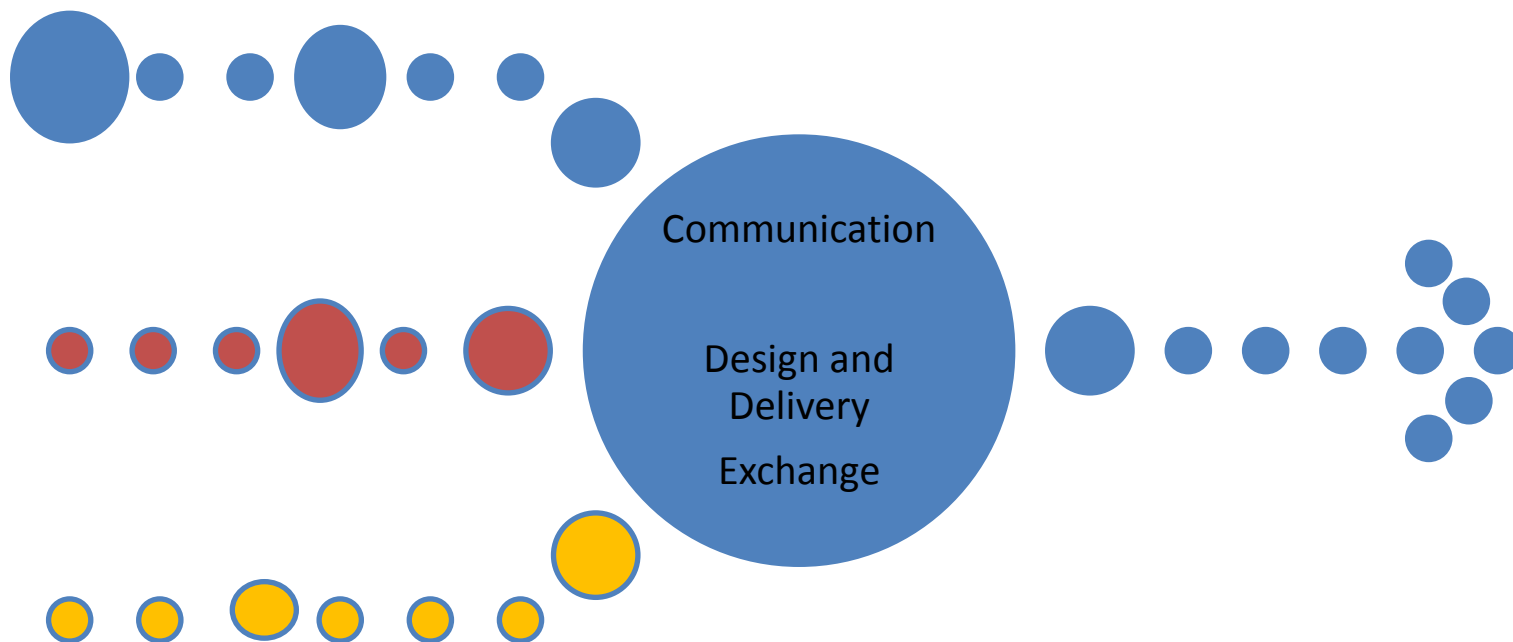
Range of roles, functions and stakeholders depending on each other



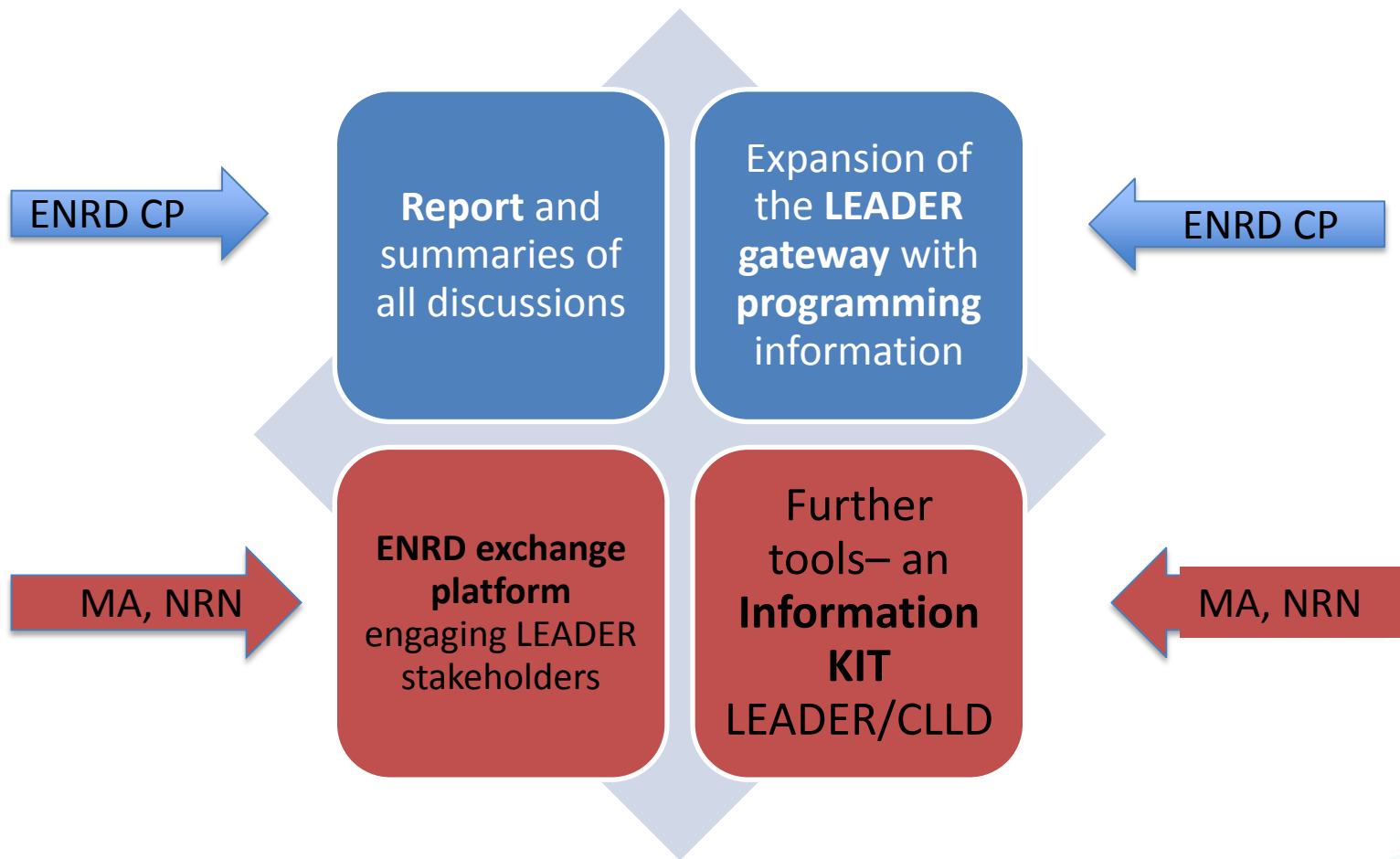
....Searching for more and enhanced communication

A
r
e
a

d
e
v
e
l
o
p
m
e
n
t



Planned Follow up



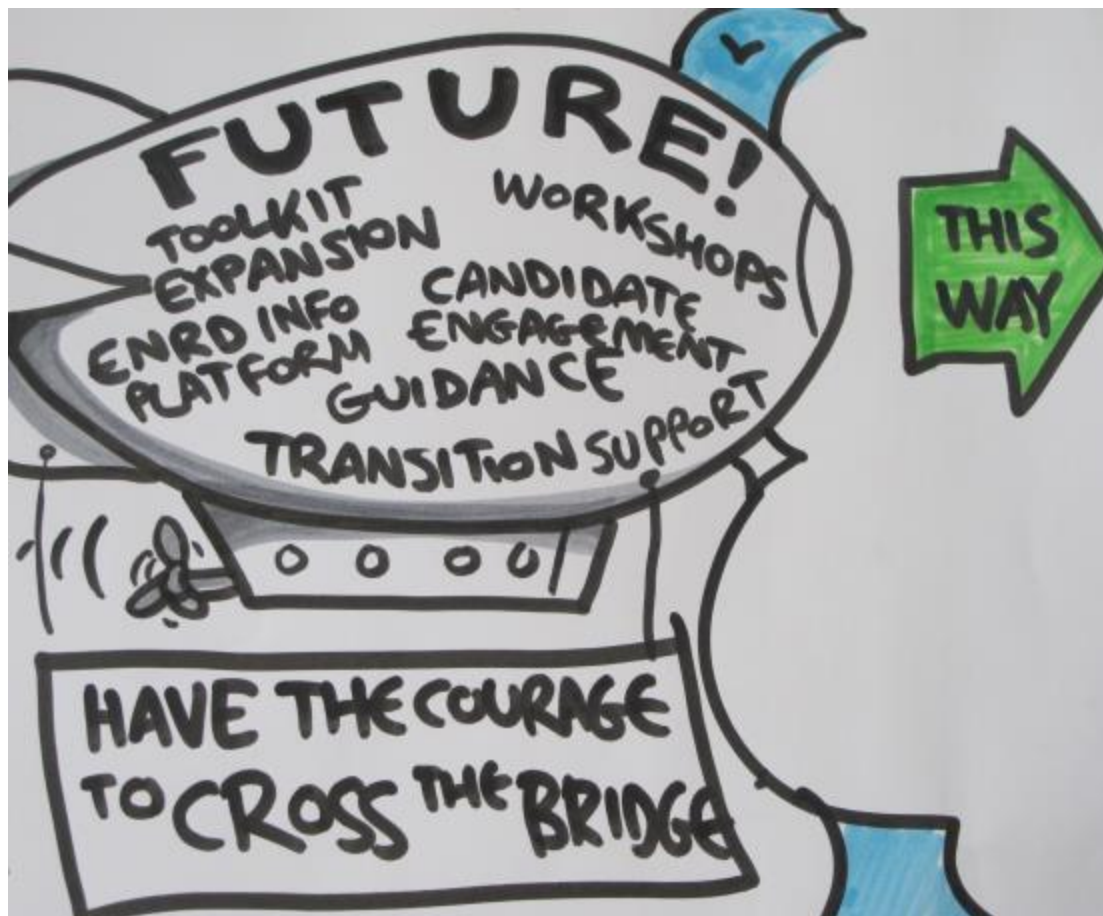
Information Kit on LEADER/CLLD for Programming – possible structure

LEADER tool kit from ENRD	Information from MA	Information from NSUs
<ul style="list-style-type: none"> - Information on the LEADER toolkit - Links by section - Relevant for Programming - LDS design - LAG setting 	<ul style="list-style-type: none"> - Areas definition - Eligibility criteria - CLLD adoption - Preparation support - Transition period 	<ul style="list-style-type: none"> - Good practices - Examples - Tools - Updates and Consultation

How can we together bridge the information gap to support effective programming?

- **WHAT** information is needed **on programming**?
- **WHO** needs to be informed?
- From **WHOM**?
- **HOW** does this need to be communicated /through what **channel**?

Comments and questions



What can
**ENRD, MAs
and NSUs** do
to support
programming
of LEADER in
the next 12
months?