

LEADER SUCCESS STORY & COORDINATION OF FUNDS IN LITHUANIA

**The Ministry of Agriculture of Lithuania
Rural Development Department**

Chief specialist Jolanta Vaičiūnienė

**Brussels
29 Jan., 2014**

Content:

- I. LEADER in Lithuania*
- II. Coordination of Funds*



LIETUVOS RESPUBLIKOS
ŽEMĖS ŪKIO MINISTERIJA

GENERAL INFORMATION ABOUT LITHUANIA



Population: 2,9 mill.

Ethnic composition: Lithuanians: 84.1%, Poles: 6.6%, Russians: 5.8%, Belorussians: 1.2%, other: 2.3%.

Area: 65,3 thous. sq. km

Largest cities according to the population (thous.):

Vilnius (553,200),
Kaunas (373,700),
Klaipėda (191,600),
Šiauliai (132,700),
Panevėžys (118,800).

Administrative division:

60 municipalities,
546 elderships.

Language: Lithuanian

Independence:

declared: 16 February 1918
restored: 11 March 1990

Political system: Parliamentary democracy;

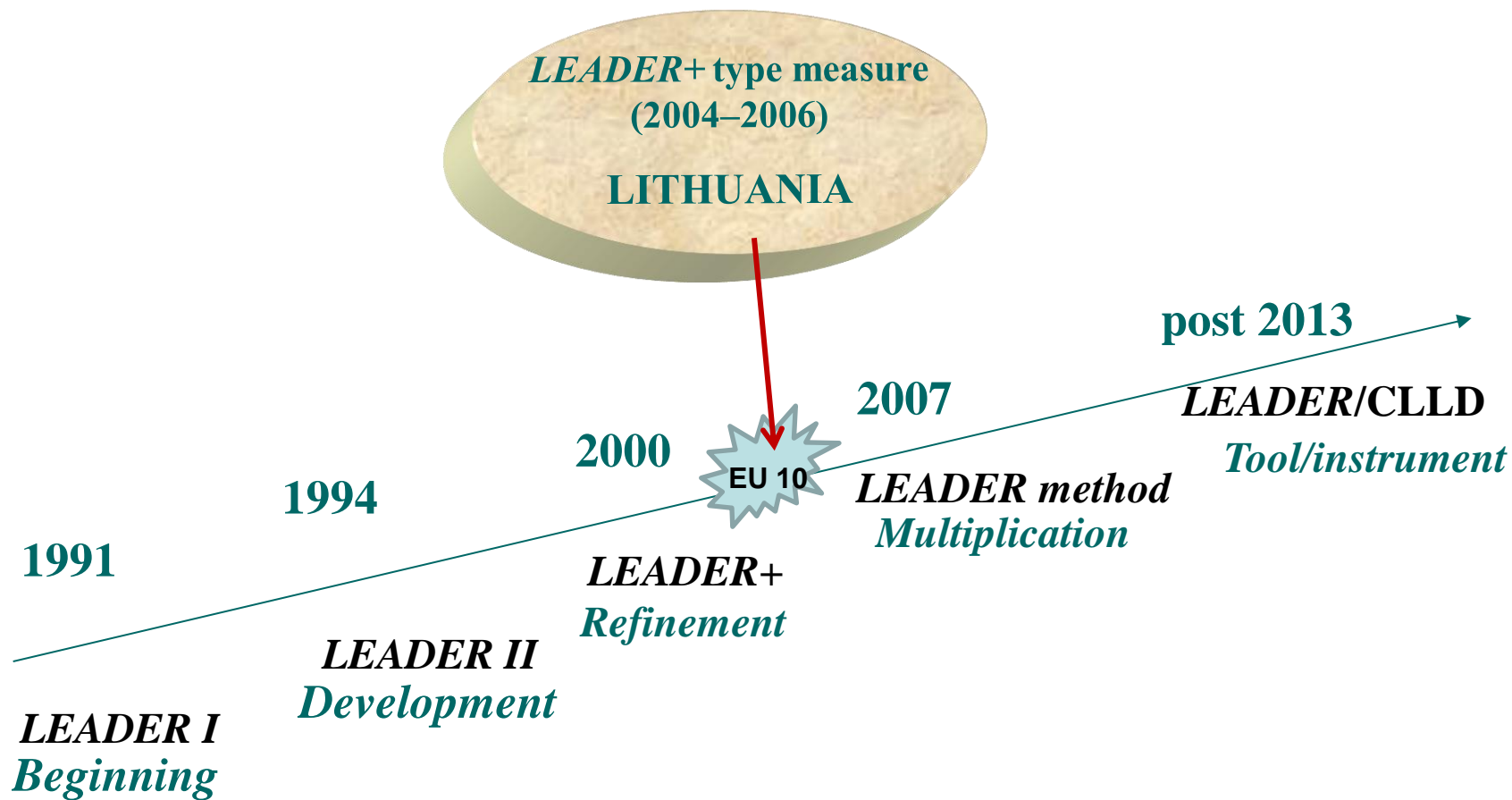
Currency: Litas (3,45 LTL = 1 Euro)

Membership: EU, NATO

Lithuania joined:

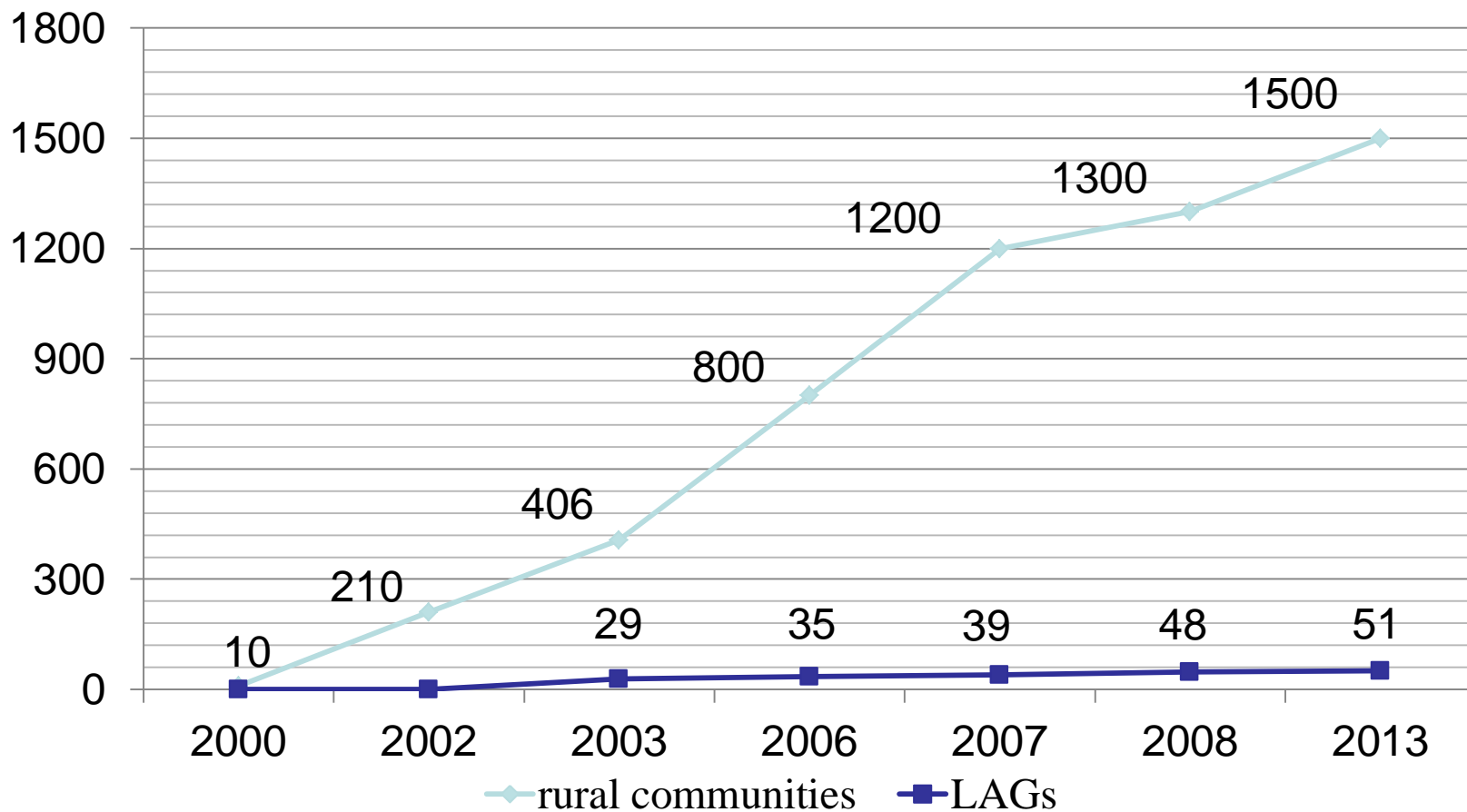
*NATO - 29 March 2004;
EU 1 May 2004.*

STAGES OF *LEADER* IN EU & LITHUANIA



LAGs AND RURAL COMMUNITIES IN LITHUANIA

The growth of rural communities and LAGs 2000–2013



10 pilot integrated strategies implemented by LAGS in 2004–2006

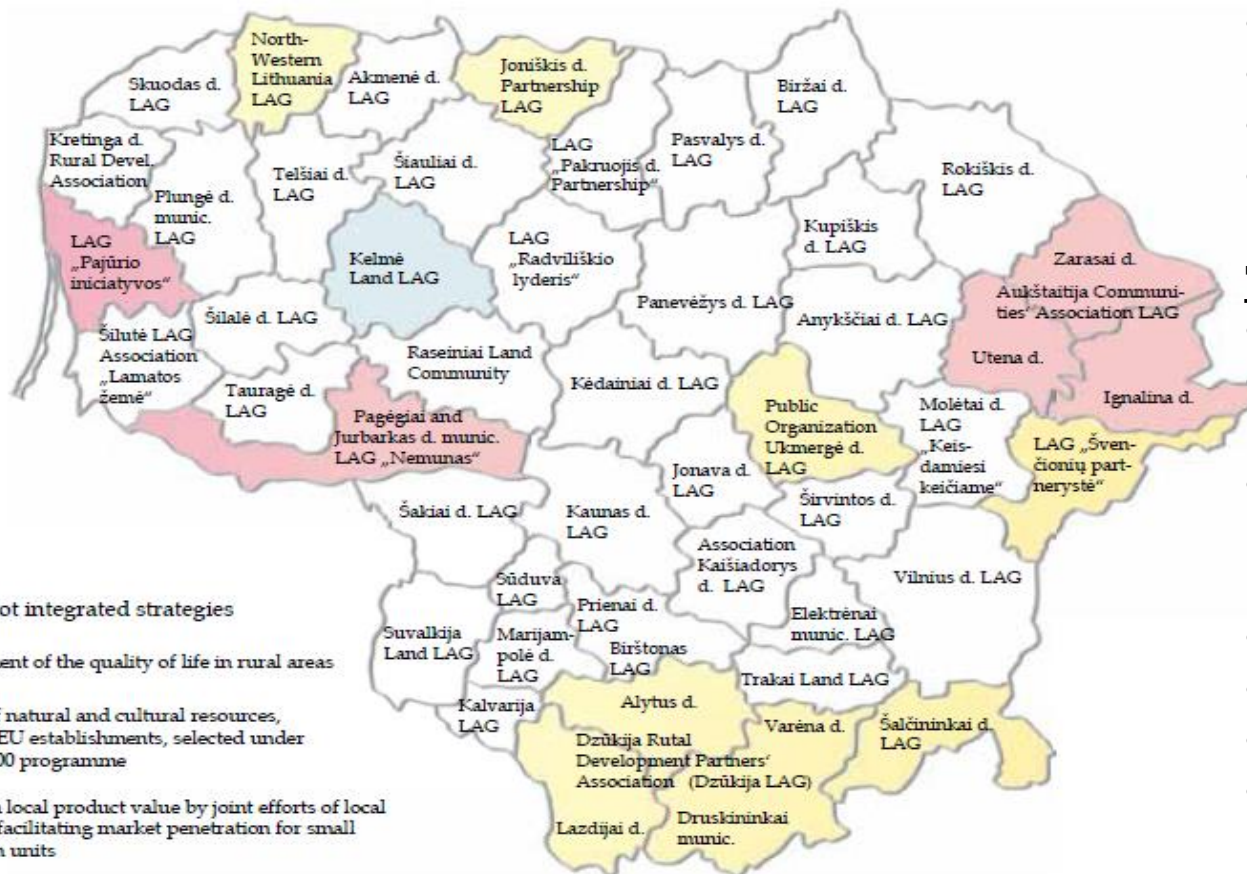
Budget: **2,7 MEUR** (1,66 % RD measures of SPD)

Main results:

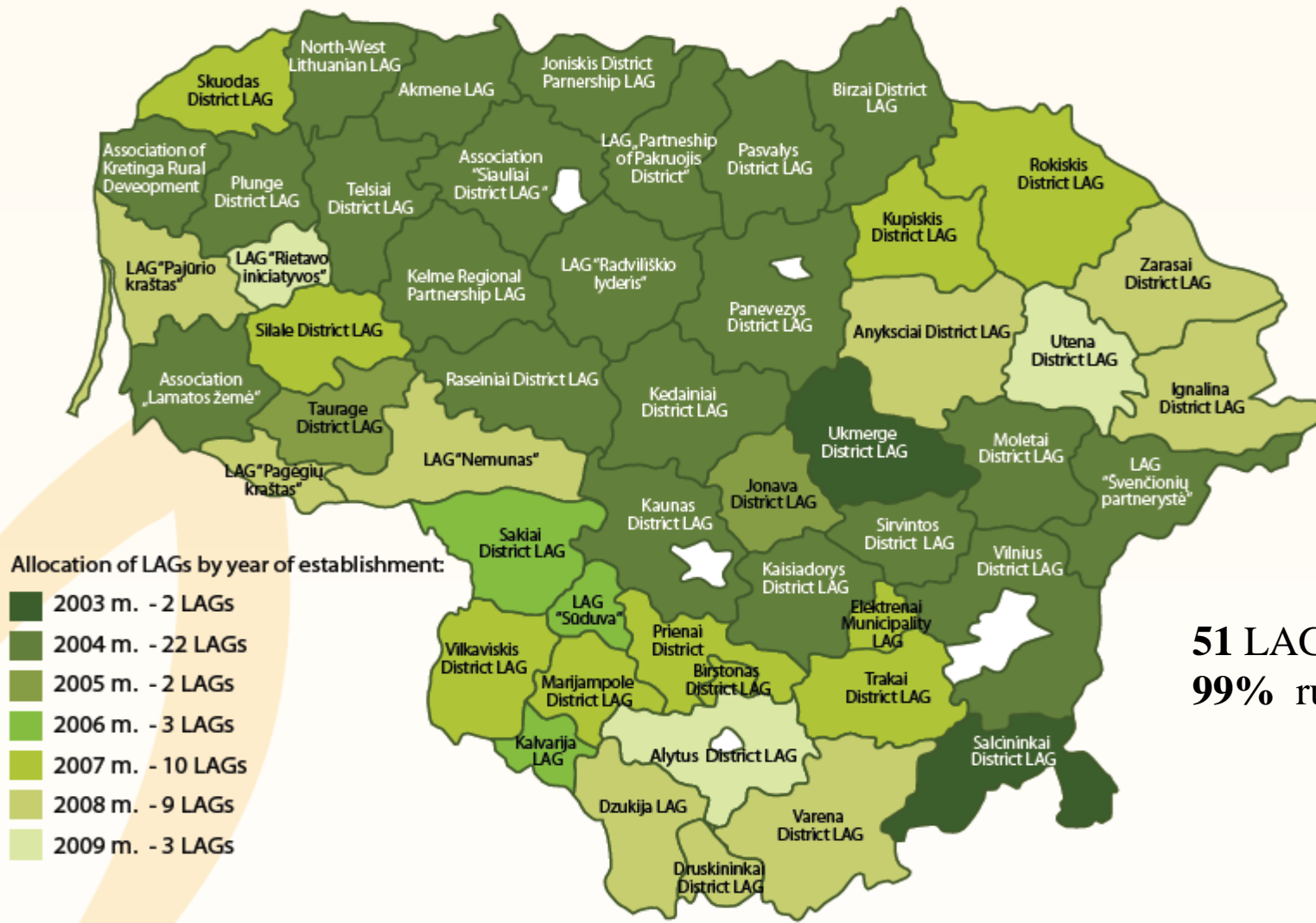
- 7285 people trained;
- 3090 youth involved;
- 23 jobs created;
- 186 jobs maintained;
- 34 businesses.

TOTAL 320 local projects:

- 33 youth;
- 24 women developed; business skills;
- 8 integration projects for people with disadvantage;
- 93 cultural heritage;
- 66 community centers;
- 67 recreational sites;
- 29 tourism/recreational services.



MAP OF THE LITHUANIAN LAGs 2007–2013

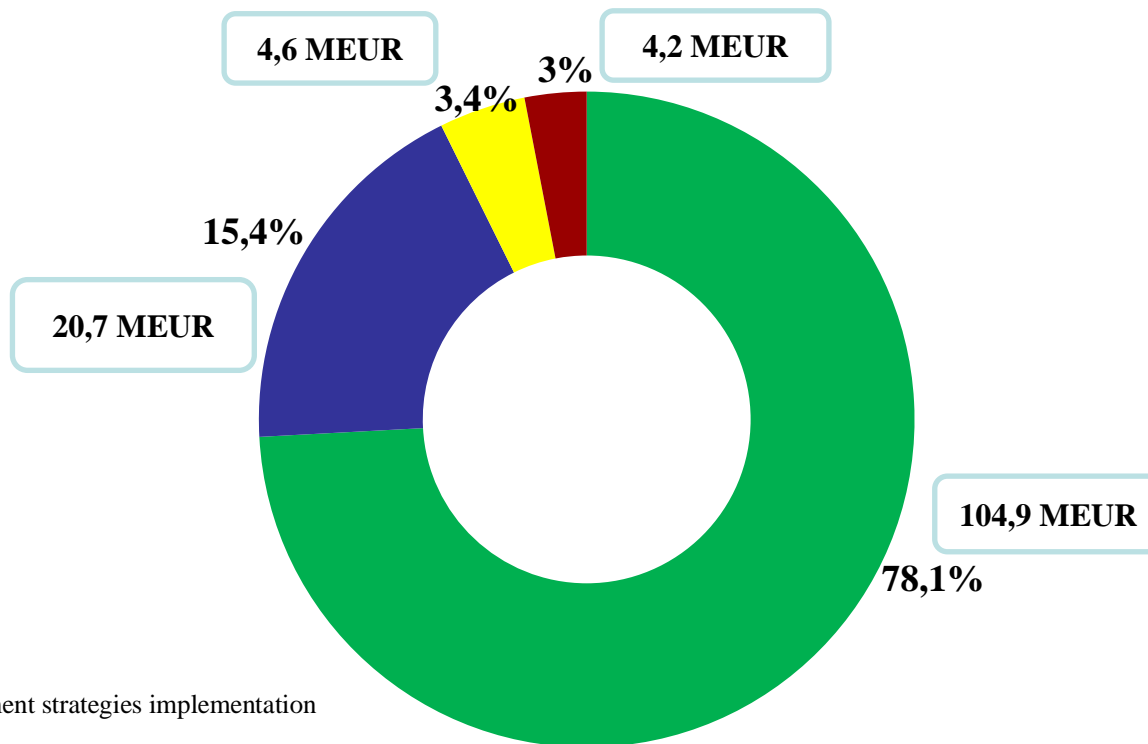


LEADER METHOD 2007–2013

LEADER – 134,4 MEUR

Total: 6 % of Lithuanian RDP

Allocation of funds for the LEADER approach



- Local development strategies implementation
- Local development strategies administration
- Support for LAG's, skill acquisition and application
- Inter-territorial and transnational cooperation

THE RESULTS SO FAR...

- **3219** local projects;
- **144** new businesses;
- **205** jobs (18 youth);
- **156** youth projects;
- **583** community centers;
- **548** public spaces.





Baltic-Nordic LEADER Cooperation award project „Youth for youth“ Baltic countries LAGs

WHAT HAS LED INTO SUCCESS?

1. PEOPLE – human resources!

Situation in 2003:

VS.

Situation in 2014:

29 LAG (**189** p. in board)
1 p. in MA
1 p. in NPA
No *Leader* center
2 Transnational experts

51 LAG (**574** p. in board, **238** p. in LAG administration)
3 p. in MA
12 NPA (146 p. in regions)
8 p. in „*Leader*” center

- Changes in rural people’s mind / understanding: there is a way out!
- Meet a challenge – from local to global (communication barriers, self-doubt, ...).
- Capacity build (planning, management skills, etc.).

2. SIMPLE BUT CONCRETE GOALS



Clear:

- **TERMS** (e. g. LAGs will organize all calls for local projects until March'14);
- **RULES;**
- **RESULT INDICATORS.**

WHAT DID WE DO TO REACH THE GOAL (1)?

Focused on...

**Instant & smart
problem
solution
manners:**

**LEADER coordination
committee under MoA
since 2005**

Main task: to discuss
problems, drafts of legal
acts.

Members: LAGs (38 %),
repr. of ministries
(Interior, Social Security &
Labour, Culture,
Environment, Economy,
etc.), associations
(municipalities, rural
communities, consultants),
networks (LAG, FLAG).

Info portal to track
project's evaluation &
implementation.

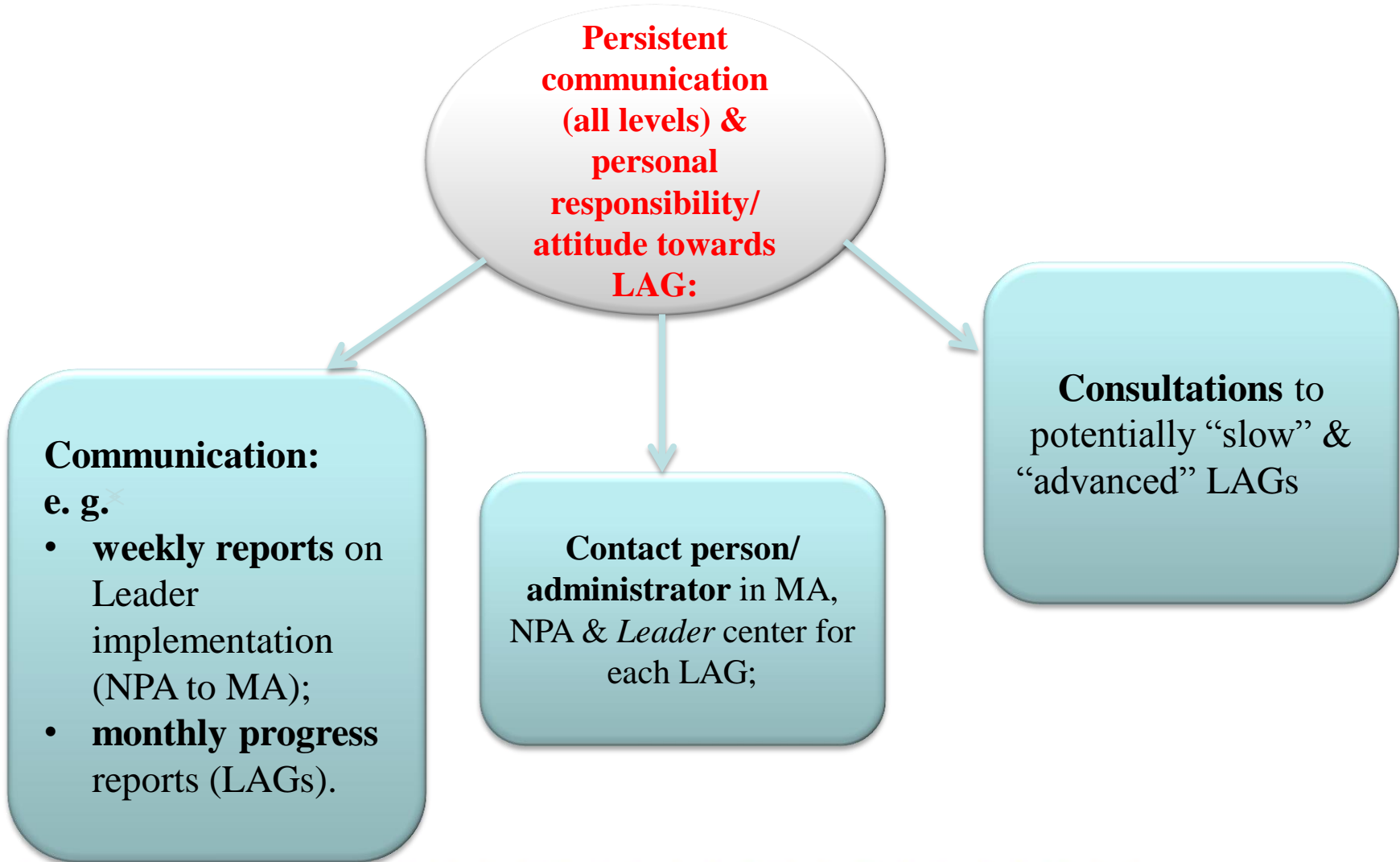
LAG Trainings:

- e. g.
- Public & private interests;
 - Public procurement;
 - Cooperation projects;
 - Local projects' preparation & implementation guidelines.

Electronic application for
advance payments (for
LAGs & local project
owners)

WHAT DID WE DO TO REACH THE GOAL (2)?

Focused on...



3. MISTAKES, PROBLEMS WE FACED..



- ✓ Over reliance on LAGs.
- ✓ No flat rates for eligible costs.
- ✓ Lack of transparency in publicity.
- ✓ Lack of understanding of public & private interests in LAG.
- ✓ LAG reluctance to rotate members in LAG board.
- ✓ Weak youth involvement.
- ✓ Frequent staff turnover in NPA .



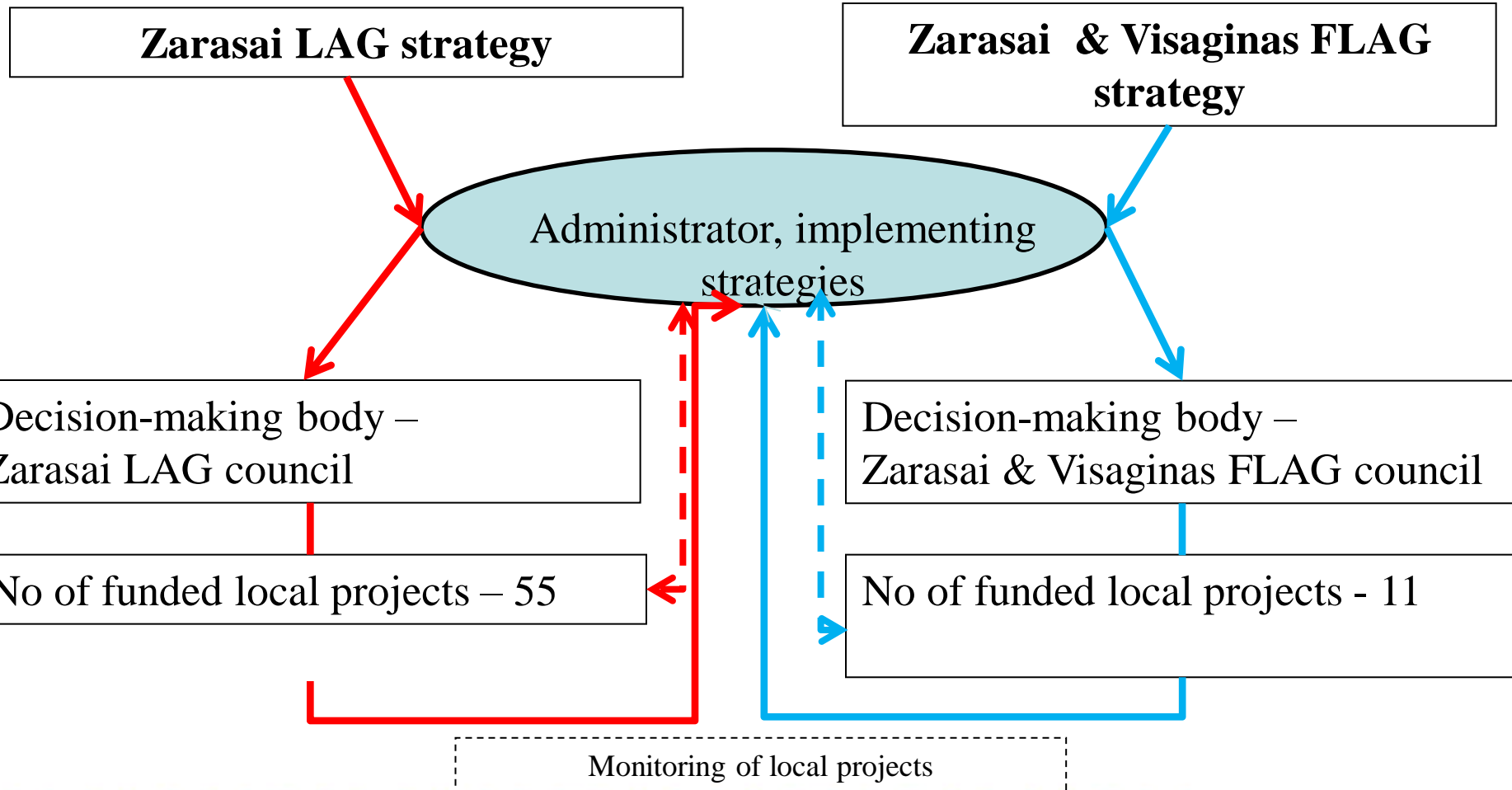
LIETUVOS RESPUBLIKOS
ŽEMĖS ŪKIO MINISTERIJA



II. COORDINATION OF FUNDS



FEATURES OF LAG'S STRATEGY IN ZARASAI MUNICIPALITY 2007–2013



ZARASAI REGION GOOD PRACTICE (1)

Management of Sartai lake's coast in Dusetos



**Zarasai & Visaginas FLAG's
Strategy**

Zarasai LAG strategy

**Strategic development plan of
Zarasai municipality (preparation
of development plan)**

ZARASAI REGION GOOD PRACTICE (2)

Zarasai LAG strategy:

Projects:

1. management of coastal area of the Lake Sartai;
2. outdoor fitness equipment.

Applicant: rural community.



ZARASAI REGION GOOD PRACTICE (3)

Zarasai & Visaginas FLAG's Strategy

Project: improvement of infrastructure and access to fishing areas.

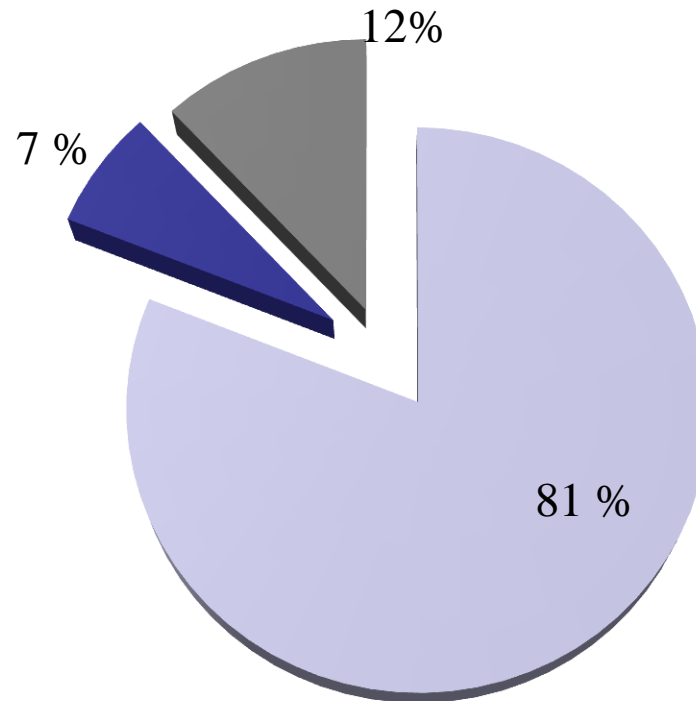
Applicant: rural community.



CLLD in 2014 – 2020? (1)

The results of survey (end of 2012) of LAGs & FLAGs show...

Participants:

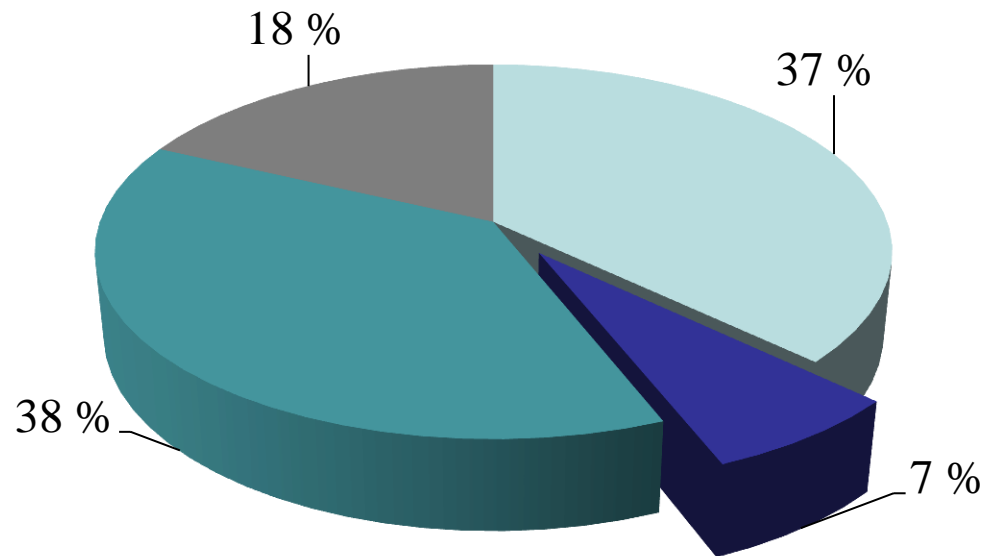


■ LAGs ■ FLAGs ■ others (rural communities, consultants)

CLLD in 2014–2020? (2)

The results of interview (end of 2012) of LAGs & FLAGs show...

Evaluation of CLLD

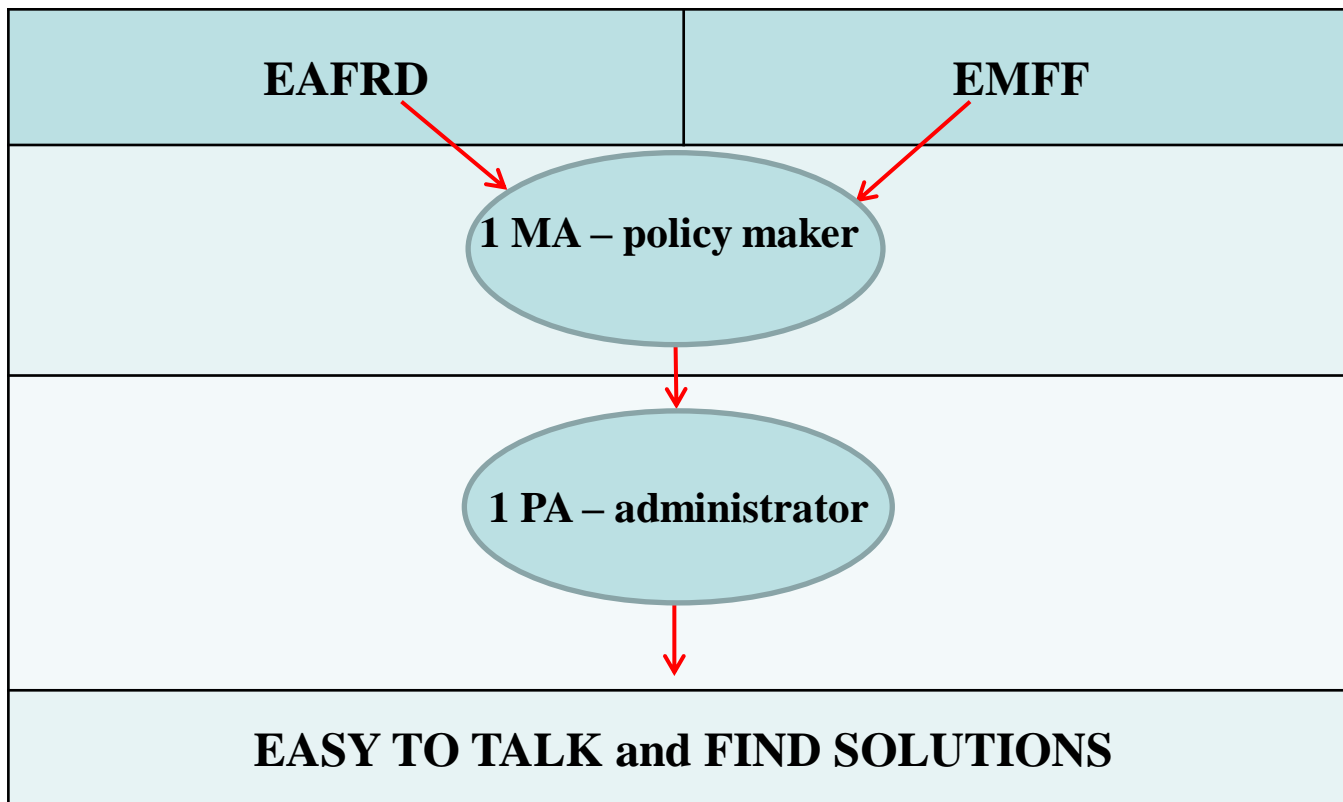


- Positive
- Negative
- More positive than negative
- More negative than positive

LEADER 2007–2013 & CLLD 2014–2020

2007–2013 experience	2014–2020 vision
2 strategies	1 strategy
2 LAGs (legal bodies)	1 LAG (legal body)
SAME territory, people, problems	
FUNDS: EAFRD, EMFF	

COORDINATION OF CLLD 2014–2020



CLLD and ESIF coordination: (EAFRD, EMFF, ESF)

Synergy among ESIF		Eligible beneficiaries	Eligible funds
1.	Cooperation projects	Rural LAG, Fishery LAG, Urban LAG, Rural-Fishery LAG	EAFRD, EMFF, ESF
2.	Direct projects under “community-friendly” measures	LAGs, Communities	



THANK YOU!

more information:
Jolanta.Vaiciuniene@zum.lt