

# SCOTLAND – UNITED KINGDOM

## Basic Information:

The Scottish Rural Development Programme (RDP) has budgeted for 2007-2013 a total public expenditure of €1.5 billion (European Agricultural Fund for Rural Development and Member State contribution). At the end of 2013, €1.261 billion was spent out of the allocated budget (see Figure 1).

**Axis 1** (Improving the competitiveness of the agricultural and forestry sector) has utilised all of its allocated budget.

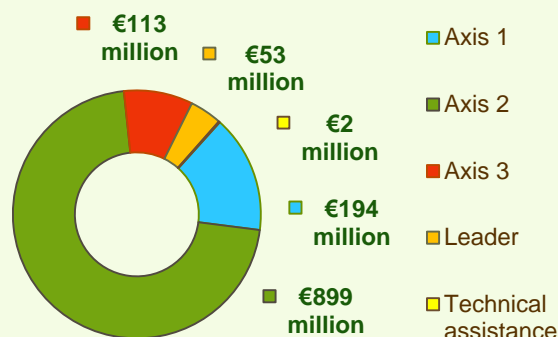
**Axis 2** (Improving the environment and the countryside) has utilised 79% of its programmed expenditure.

**Axis 3** (Improving the quality of life in rural areas, has utilised 81% of its budget.

**Axis 4** (Leader) has utilised approximately 81% of the programmed expenditure.

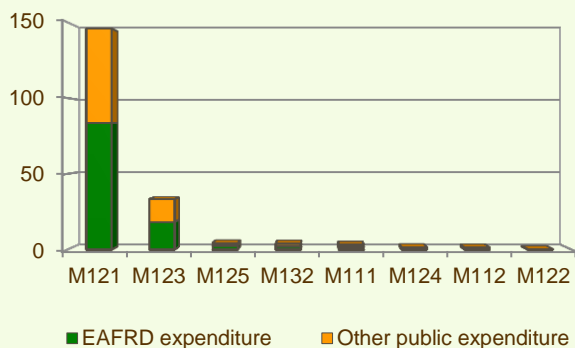


**Figure 1: Total public expenditure per axis in Scotland (2007-2013)**

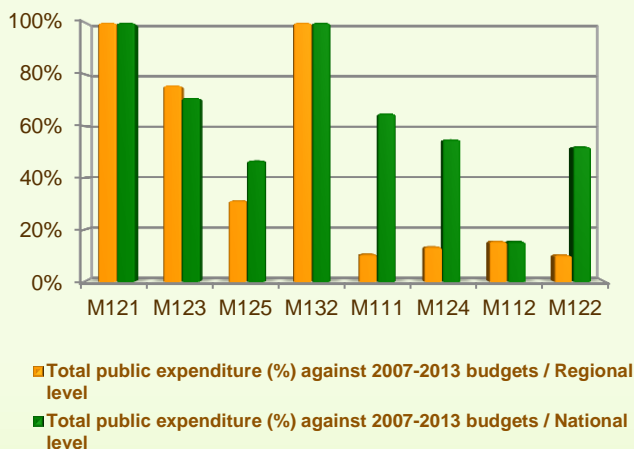


## Axis 1 - Improving the competitiveness of the agricultural and forestry sector

**Figure 2: Axis 1 total public expenditure per measure in million EURO (2007-2013)**



**Figure 3: Axis 1 total public expenditure (2007-2013) against 2007-2013 budgets, main measures**



Axis 1 places an emphasis on Modernisation of agricultural holdings (Measure 121), allocating to this measure a third of the budgeted funds, of the overall budgeted funds for Axis 1. Analysis of the expenditure rates per measure up to 2013 shows that:

- ❖ Two measures have utilised all of their programmed expenditure:
  - Modernisation of agricultural holdings (M121)
  - Participation of farmers in food quality schemes (M132)
- ❖ The measure on Adding value to agricultural and forestry products (M123) has utilised almost 76% of its allocated budget.
- ❖ Five measures have utilised 31% or less of their programmed expenditure:
  - Infrastructure related to the development and adaptation of agriculture and forestry (M125), 31%
  - Setting up of young farmers (M112), 16%
  - Cooperation for development of new products, etc. (M124), 13%
  - Vocational training and information actions (M111), 11% and
  - Improvement of the economic value of forests (M122), 10%.

Figure 3 indicates the progress of the total public expenditure of the most important measures of Axis 1 against the 2007-2013 budgets, in comparison to the National level.

# SCOTLAND – UNITED KINGDOM

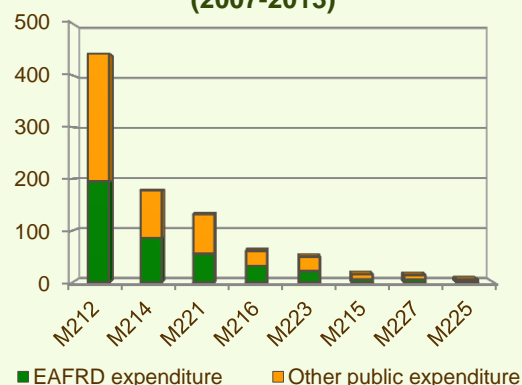
## Axis 2 - Improving the environment and the countryside

Axis 2 focuses on Payments to farmers in areas with handicaps other than mountain areas (M212) and Agri-environment payments (M214). The two measures represent the majority of the Axis 2 expenditure (see Figure 4). Together they have been allocated 50% of the total public budget programmed in the Scottish RDP for 2007-2013.

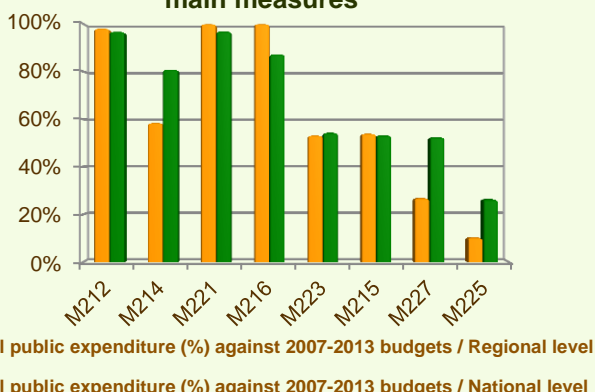
- ❖ First afforestation of agricultural land (M221) and Non-productive investments – agriculture (M216) have used all of their available funds.
- ❖ The measure on Payments to farmers in areas with handicaps, other than mountain areas (M212), has utilised 98% of its programmed budget.
- ❖ Three out of the eight measures offered by the Axis, have utilised 50-60% of their allocated budgets, namely:
  - Agri-environment payments (M214), 58%
  - Animal welfare payments (M215), 54% and
  - First afforestation of non-agricultural land (M223), 53%.
- ❖ Non-productive investments - forestry (M227) and Forest environment payments (M225) have utilised respectively 27% and 10% of their allocated budgets.

Figure 5 indicates the progress of the total public expenditure of the most important measures of Axis 2 against the 2007-2013 budgets, in comparison to the National level.

**Figure 4: Axis 2 total public expenditure per measure in million EURO (2007-2013)**

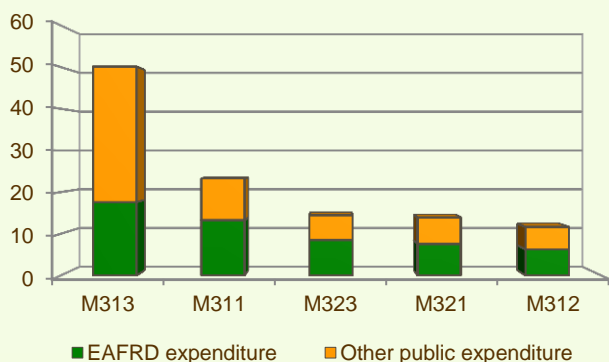


**Figure 5: Axis 2 total public expenditure (2007-2013) against 2007-2013 budgets, main measures**



## Axis 3 - Quality of life in rural areas and diversification of the rural economy

**Figure 6: Axis 3 total public expenditure per measure in million EURO (2007-2013)**



Axis 3 of the Scottish RDP focuses on Encouragement of tourism activities (M313) and Basic services for the economy and rural population (M321) which together represent 58% of the Axis budget and most of the total public expenditure (see Figure 6).

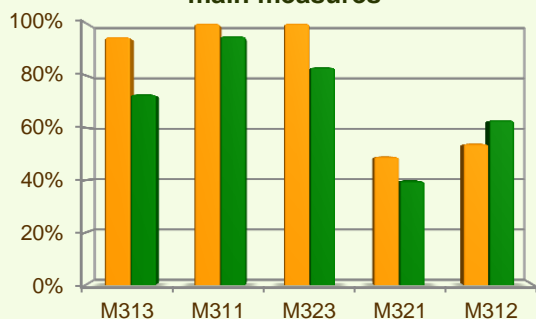
When comparing the expenditure rates per measure up to 2013 it is observed that:

- ❖ The measures Conservation and upgrading of the rural heritage (M323) and Diversification into non-agricultural activities (M311) have utilised all of their allocated funds.
- ❖ The measure Encouragement of tourism activities (M313) has utilised almost 95% of its programmed budget.

# SCOTLAND – UNITED KINGDOM

## Axis 3 - Quality of life in rural areas and diversification of the rural economy

**Figure 7: Axis 3 total public expenditure (2007-2013) against 2007-2013 budgets, main measures**



■ Total public expenditure (%) against 2007-2013 budgets / Regional level

■ Total public expenditure (%) against 2007-2013 budgets / National level

- ❖ Two measures have utilised 49-55% of their programmed budgets, namely:
  - Support for business creation and development (M312), 54%
  - Basic services for the economy and rural population (M321), 49%.
- ❖ Up to 2013, Training and information (M331) has recorded minimum expenditure.

Figure 7 indicates the progress of the total public expenditure of the most important measures of Axis 3 against the 2007-2013 budgets, in comparison to the National level.

## Axis 4 - Leader

The Leader Axis in the Scottish RDP has allocated budget of €65.5 million out of which €53 million have been spent by 2013. Within the Axis, emphasis has been given to the measures on Competitiveness (M411), Quality of life diversification (M413) and Environment/ land management (M412) which together were allocated 83% of the Axis total public expenditures.

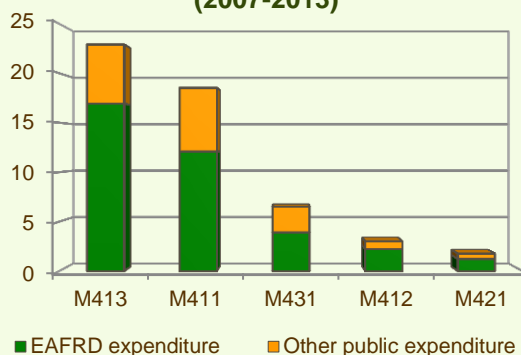
When comparing the expenditure rates per measure up to 2013 it is observed that Quality of life/diversification (M413) had the largest total public expenditure (see Figure 8).

It is also observed that:

- ❖ Three measures have utilised all or almost all of their allocated funds, namely:
  - Competitiveness (M411),
  - Quality of life/diversification (M413), and
  - Running the LAG, skills acquisition, animation (M431).
- ❖ Implementing cooperation projects (M421) has utilised 37% of its programmed expenditure.
- ❖ The measure Environment/land management (M412) has utilised 17% of its allocated budget.

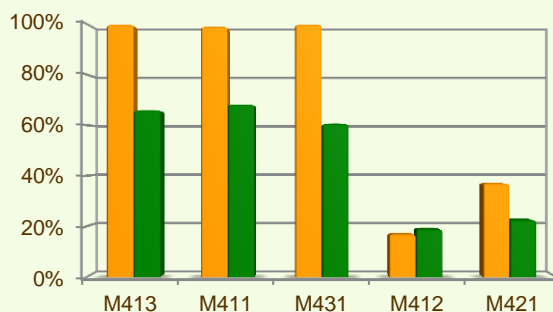
Figure 9 indicates the progress of the total public expenditure of the most important measures of Axis 4 against the 2007-2013 targets, in comparison to the National level.

**Figure 8: Axis 4 total public expenditure per measure in million EURO (2007-2013)**



■ EAFRD expenditure    ■ Other public expenditure

**Figure 9: Axis 4 total public expenditure (2007-2013) against 2007-2013 targets, main measures**



■ Total public expenditure (%) against 2007-2013 targets / Regional level

■ Total public expenditure (%) against 2007-2013 targets / National level

# SCOTLAND – UNITED KINGDOM

## Measure 413 project example: Food & Biodiversity - development and research / United Kingdom – Scotland

The project initiator is an Industry Group interested in promoting agriculture and crafting. Through this project it aims at exploring ways of better linking quality food and drink and the environment it is nurtured in, and of creating information and advice for producers on different marketing approaches for biodiversity and environmental stewardship credentials of food and drink products.

Marketing approaches connecting premium food and drink products with stewardship of the environment and biodiversity benefits were developed under the project, and analysis has been made on the extent consumers respond favourably to each approach and the extent to which this increase sales. The findings of this research were made public on dedicated website section where farmers and other stakeholders had free access to get informed and participate to discussions and to information sharing.

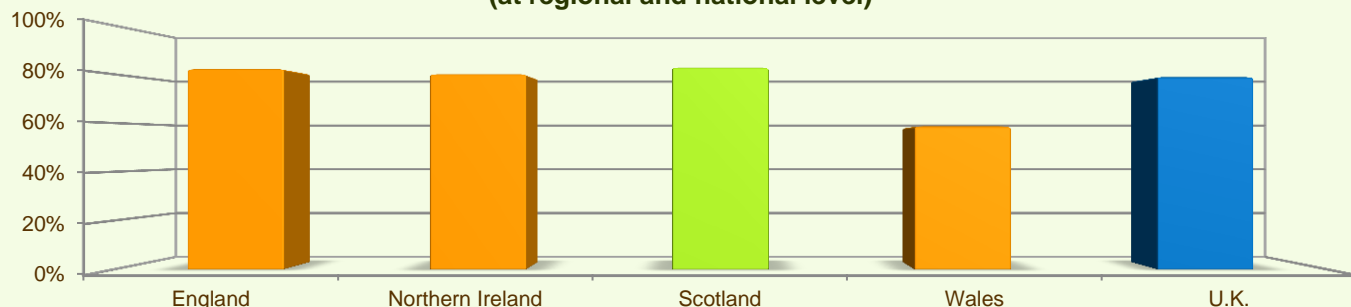
**The total cost** of the project was €45,600, out of which €22,800 was EAFRD contribution.

**Link:** [http://enrd.ec.europa.eu/policy-in-action/rdp\\_view/en/view\\_projects\\_en.cfm?action=detail&backfuse=jsview&postcard\\_id=6020](http://enrd.ec.europa.eu/policy-in-action/rdp_view/en/view_projects_en.cfm?action=detail&backfuse=jsview&postcard_id=6020)

### Summary

- ✓ Within seven years of implementation, the Scottish RDP has utilised 83% (see Figure 10) of the total public expenditure planned for the current Programming Period (including post Health Check and the European Economic Recovery Package modifications).
- ✓ Payments to farmers in areas with handicaps, other than mountain areas (M212) is the measure with the highest allocated budget in the Scottish RDP. Up to 2013, it has utilised 98% of its available budget and represents 35% of the total public expenditure of the programme.
- ✓ Agri-environment payments (M214) has the second largest budget in the Scottish RDP and the utilised expenditure is 58% of its allocated funds. M214 represents 14% of the total public expenditure of the programme.
- ✓ First afforestation of agricultural land (M221) and First afforestation of non-agricultural land (223) have equally allocated budgets and are the third largest budgets in the Scottish RDP. M221 and M223 have used respectively 100% and 53% of their programmed funds and represent, in the same order, 10% and 4% of the total public expenditure of the programme.

**Figure 10: Progress of total public expenditure up to 2013 (at regional and national level)**



*Source of the data: 1) Programmed expenditures 2007-2013: RDP budget allocation following Health Check revision (December 2013); 2) Expenditures 2007-2013: DG AGRI 3) Output indicators data are available only at National level; therefore at regional level a comparison of financial implementation progress is provided between the regional RDPs.*

For further detailed information on financial / physical and output indicators data please refer to the dedicated ENRD website section on Monitoring Indicators.