

TRENTO - ITALY

Basic Information:

The Rural Development Programme (RDP) of the Trento province has budgeted for 2007-2013 a total public expenditure of €279 million (European Agricultural Fund for Rural Development and Member State contribution). At the end of 2013, €219 million were spent out of the allocated budget (see figure 1).

Axis 1 – (Improving the competitiveness of the agricultural and forestry sector) has spent 73% of its allocated budget.

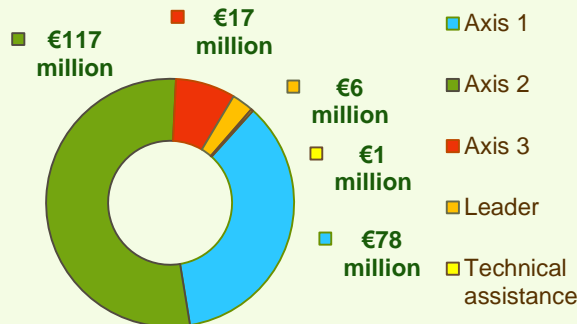
Axis 2 – (Improving the environment and the countryside) has utilised 96% of its programmed expenditure.

Axis 3 – (Improving the quality of life in rural areas) has spent 52% of its budget.

Axis 4 – (Leader) has used approximately 36% of its programmed expenditure.



Figure 1: Total Public Expenditure from 2007 to 2013 in Trento & expenditure per Axis



Axis 1 - Improving the competitiveness of the agricultural and forestry sector

Figure 2: Axis 1 - Total Public expenditure per measure in million EURO (2007-2013)

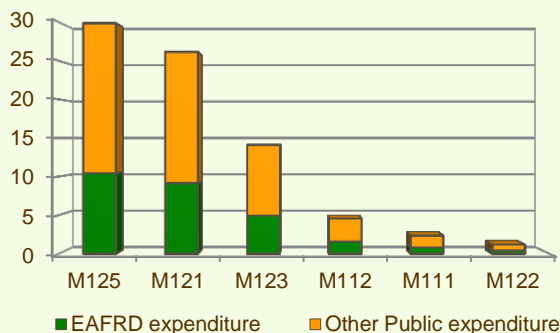
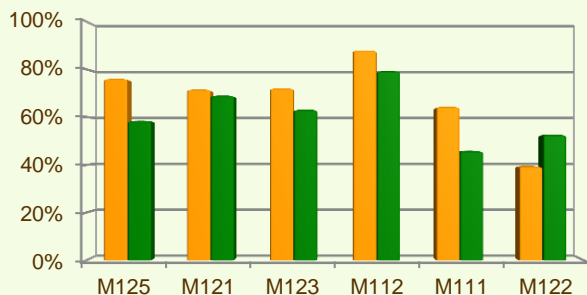


Figure 3: Axis 1 – Total public expenditure (2007-2013) against 2007-13 budgets, main measures



■ Total Public expenditure (%) against 2007-2013 budgets / Regional level
 ■ Total Public expenditure (%) against 2007-2013 budgets / National level

Axis 1 places an emphasis on the Modernisation of agricultural holdings (M121) and Infrastructure related to the development and adaptation of agriculture (M125), allocating to these two measures 71% of the overall budgeted funds for Axis 1.

Analysis of the expenditure rates per measure up to 2013 shows that:

- ❖ Setting up of young farmers (M112) has utilised 88% of its planned expenditure.
- ❖ The following measures have spent approximately between 70% and 80% of their allocated budgets:
 - Infrastructure related to the development and adaptation of agriculture (M125), 76%
 - Adding value to agricultural and forestry products (M123), 72% and
 - Modernisation of agricultural holdings (M121), 72%
- ❖ Vocational training and information actions (M111) has utilised 64% of its planned expenditure.
- ❖ Finally, Improvement of the economic value of forests (M122) has spent 39% of its budget.

Figure 3 indicates the progress of the total public expenditure of the most important measures of Axis 1 against the 2007-2013 budgets, in comparison to the National level.

TRENTO - ITALY

Axis 2 - Improving the environment and the countryside

Axis 2 focuses on Agri-environment payments (M214) and Natural handicap payments to farmers in mountain areas (M211). The two measures represent the majority of Axis 2 expenditure (see figure 4). Together they have been allocated 41% of the total public budget programmed in the Trento RDP for 2007-2013.

- ❖ The measure on Natural handicap payments to farmers in mountain areas (M211) has spent 98% of its allocated budget.
- ❖ The measure on Agri-environment payments (M214) has utilised 99% of its allocated budget.
- ❖ The other two measures offered by the Axis have utilised around 50-60% of their programmed expenditure, namely:
 - Restoring forestry potential and introducing prevention actions (M226), 54% and
 - Non-productive investments – forestry (M227), 57%.

Figure 5 indicates the progress of the total public expenditure of the most important measures of Axis 2 against the 2007-2013 budgets, in comparison to the National level.

Figure 4: Axis 2 - Total Public expenditure per measure in million EURO (2007-2013)

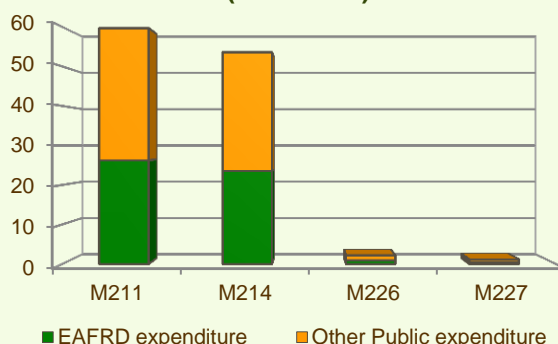
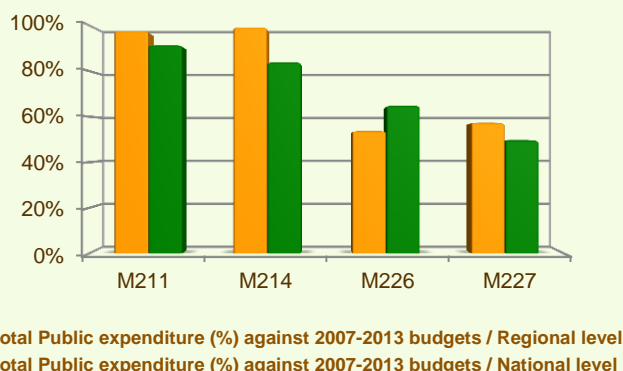
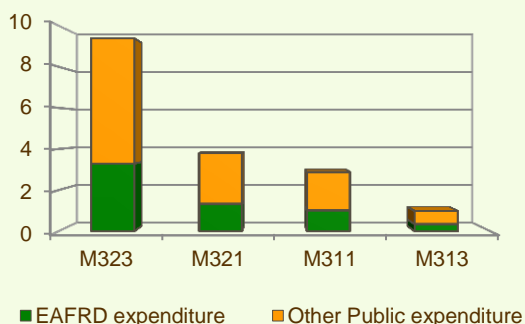


Figure 5: Axis 2 – Total public expenditure (2007-2013) against 2007-13 budgets, main measures



Axis 3 - Quality of life in rural areas and diversification of the rural economy

Figure 6: Axis 3 - Total Public expenditure per measure in million EURO (2007-2013)



Axis 3 of the Trento RDP focuses on Conservation and upgrading of the rural heritage (M323) which represents over 52% of the Axis budget and most of the total public expenditure (see figure 6).

When comparing the expenditure rates per measure up to 2013 it is observed that:

- ❖ The Diversification into non-agricultural activities measure (M311) has used 68% of its programmed expenditure.
- ❖ The Conservation and upgrading of the rural heritage measure (M323) has utilised 55% of its budget.
- ❖ The Basic services for the economy and rural population (M321) and Encouragement of tourism activities (M313) have utilised 46% and 33% correspondingly of their allocated budgets up to the end of 2013.

TRENTO - ITALY

Axis 3 - Quality of life in rural areas and diversification of the rural economy

Figure 7: Axis 3 – Total public expenditure (2007-2013) against 2007-13 budgets, main measures

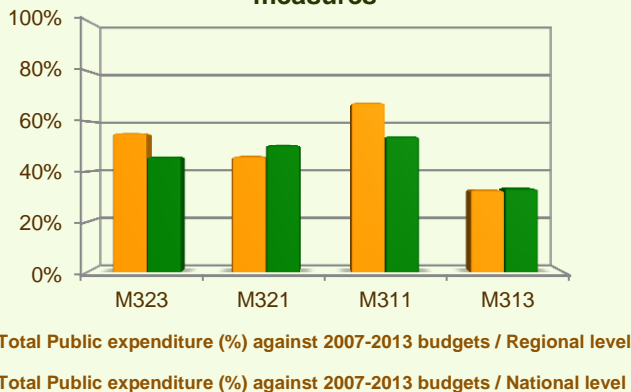


Figure 7 indicates the progress of the total public expenditure of the most important measures of Axis 3 against the 2007-2013 budgets, in comparison to the National level.

Axis 4 - Leader

The Leader Axis in the Trento RDP has allocated budget of €17 million out of which nearly €6 million have been spent by 2013. Within the Axis emphasis has been given to Quality of life/diversification (M413) which has been allocated the largest share of funds.

- ❖ As shown in figure 8, the Running the LAG, skills acquisition, animation measure (M431) has utilised 67% of its programmed budget.
- ❖ Competitiveness (M411) has utilised almost 43% of its allocated budget.
- ❖ The Quality of life/diversification (M413) measure has spent 31% of its programmed expenditure.
- ❖ For Implementing cooperation projects (M421) minimal expenditure has been recorded up the end of 2013.

Figure 9 indicates the progress of the total public expenditure of the most important measure(s) of Axis 4 against the 2007-2013 budgets, in comparison to the National level.

Figure 8: Axis 4 - Total Public expenditure per measure in thousand EURO (2007-2013)

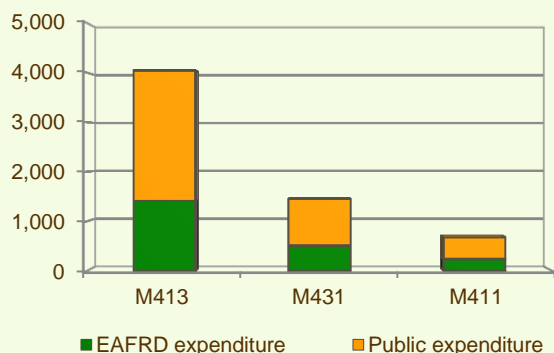
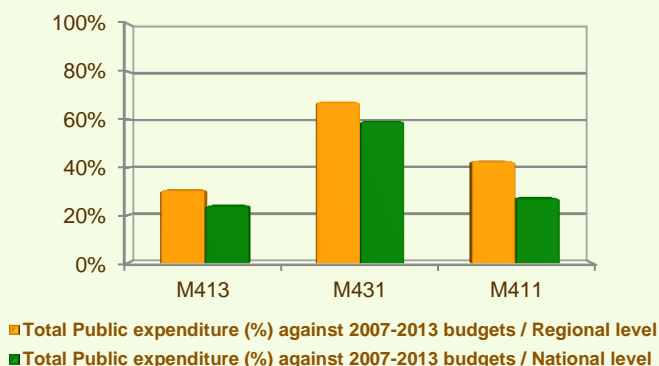


Figure 9: Axis 4 – Total public expenditure (2007-2013) against 2007-13 budgets, main measures

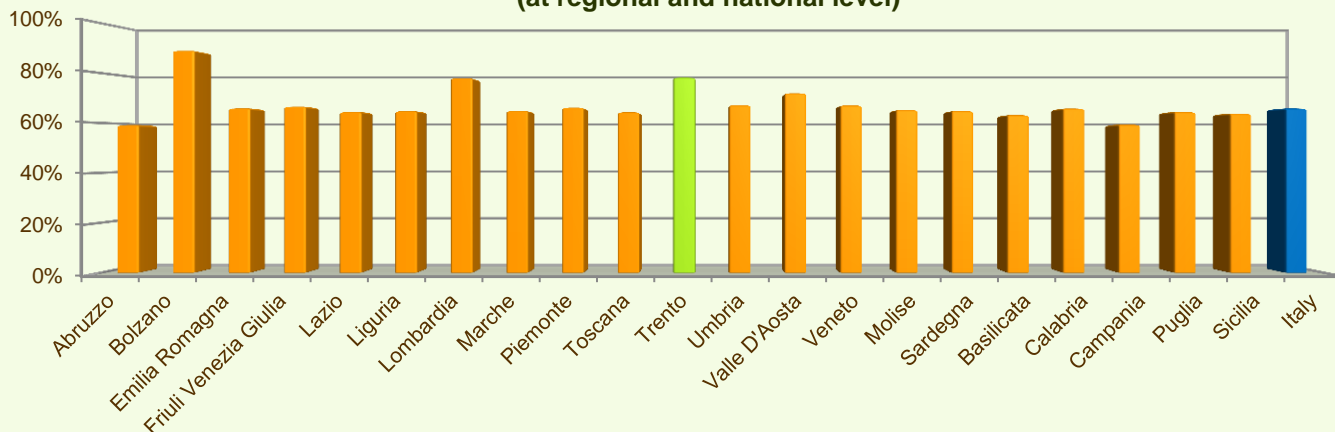


TRENTO - ITALY

Summary

- ✓ Within seven years of implementation, the Trento RDP has utilised 78% (see figure 10) of the total public expenditure planned for the current Programming Period (including post Health Check and the European Economic Recovery Package modifications).
- ✓ Natural handicap payments to farmers in mountain areas (M211) is the measure with the highest allocated budget in the Trento RDP. Up to 2013, it has utilised 98% of its available budget and represents 27% of the total public expenditure of the programme.
- ✓ Agri-environment payments (M214) has the second largest budget in the Trento RDP and the utilised expenditure is 99% of its allocated funds. M214 represents 24% of the total public expenditure of the programme.
- ✓ The third largest budget is for Infrastructure related to the development and adaptation of agriculture (M125) which has used almost 76% of its programmed total public expenditure and represents 14% of the total public expenditure of the programme..

Figure 10: Progress of total public expenditure up to 2013 (at regional and national level)



Source of the data:

1) Programmed expenditures 2007-2013: RDP budget allocation following Health Check revision (December 2013)

2) Expenditures 2007-2013: DG AGRI

3) Output indicators data are available only at National level; therefore at regional level a comparison of financial implementation progress is provided between the regional RDPs.

For further detailed information on financial / physical and output indicators data please refer to the dedicated ENRD website section on Monitoring Indicators.



<http://enrd.ec.europa.eu>