

# CALABRIA - ITALY



## Basic Information:

The Rural Development Programme (RDP) of the Calabria region has budgeted for 2007-2013 a total public expenditure of €1.1 billion (European Agricultural Fund for Rural Development and Member State contribution). At the end of 2013, €718 were spent out of the allocated budget (see figure 1).

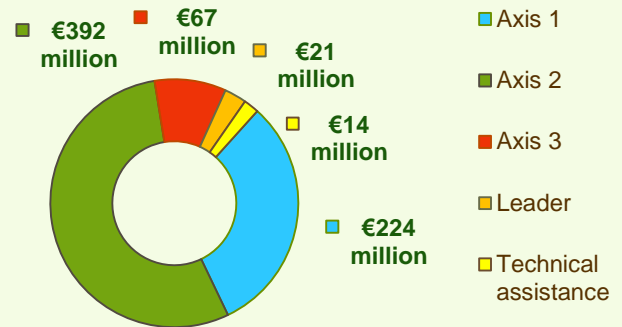
**Axis 1** – (Improving the competitiveness of the agricultural and forestry sector) has utilised 52% of its allocated budget.

**Axis 2** – (Improving the environment and the countryside) has realised 86% of its programmed expenditure.

**Axis 3** – (Improving the quality of life in rural areas) has utilised nearly 55% of its budget.

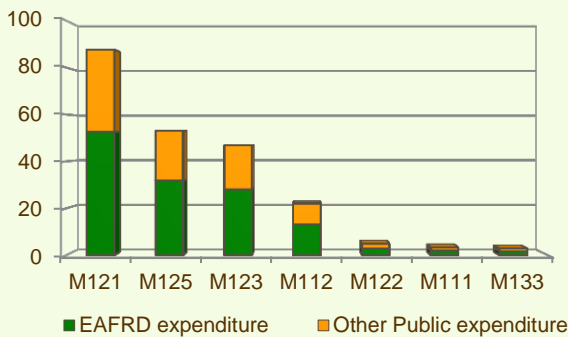
**Axis 4** – (Leader) has realised around 33% of its programmed expenditure.

**Figure 1: Total Public Expenditure from 2007 to 2013 in Calabria & expenditure per Axis**

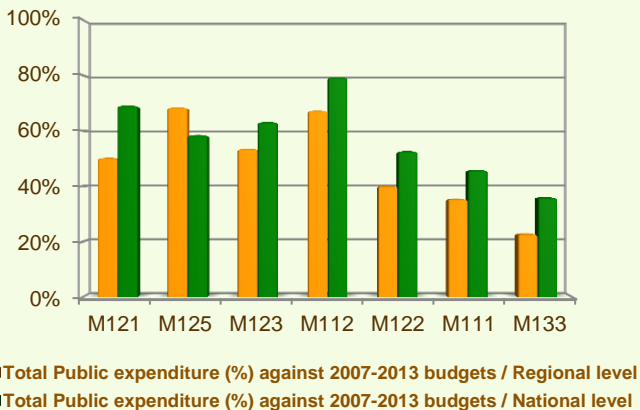


## Axis 1 - Improving the competitiveness of the agricultural and forestry sector

**Figure 2: Axis 1 - Total Public expenditure per measure in million EURO (2007-2013)**



**Figure 3: Axis 1 – Total public expenditure (2007-2013) against 2007-13 budgets, main measures**



Axis 1 places an emphasis on the Modernisation of agricultural holdings (Measure 121), Adding value to agricultural and forestry products (Measure 123) and Infrastructure related to the development and adaptation of agriculture (M125), allocating to these three measures nearly 80% of the overall budgeted funds for Axis 1. Analysis of the expenditure rates per measure up to 2013 shows that:

- ❖ Two measures have utilised 65-70% of their budgets:
  - Infrastructure related to the development and adaptation of agriculture (M125), 69% and
  - Setting up of young farmers (M112), 67%.
- ❖ Two measures have utilised 50-55% of their budgets:
  - Adding value to agricultural and forestry products (M123), 54% and
  - Modernisation of agricultural holdings (M121), 50%.
- ❖ Three measures have utilised from 30% to 40% of their planned expenditure, namely:
  - Improvement of the economic value of forests (M122), 40%
  - Vocational training and information actions (M111), 36% and
  - Setting up of management, relief and advisory services (M115) 30%.
- ❖ Cooperation for development of new products, etc. (M124), Information and promotion activities (M133) and Early retirement (M113) have spent respectively 26%, 23% and 15% of their programmed budgets. Three measures (M114, M126 and 132), record minimal or no expenditure up to the end of 2013.

Figure 3 indicates the progress of the total public expenditure of the most important measures of Axis 1 against the 2007-2013 budgets, in comparison to the National level.

# CALABRIA - ITALY

## Measure 121 project example: Valorising Local Identities Trough Innovation and Diversification: a Pathway for Sustainable Farm Management / Italy - Calabria

With EAFRD support a 26 ha farm in the valley of Crati, producing mainly olive oil, diversified into local black pig breeding and developed new supply channels. The olive oil produced was certified as organic and labelled as PDO. Through the project an irrigation system disposing of wastewaters was set-up, a system of disposing of oil pulp and a piggery were build. Additionally, a bilingual website of the farm was developed and a farm shop was opened. Farm productivity and profit increased, (half the produce is now sold via the farm shop, other half in supermarkets and online), costs of energy and fertilisers were reduced, as well as wastewater (by 50%). Cooperation with the local university made the farm part of a pig meat processing cooperative.

**The total cost** of the project was €35,000, out of which €17,500 was EAFRD contribution, and €486,000 other sources.

**Link:** [http://enrd.ec.europa.eu/policy-in-action/rdp\\_view/en/view\\_projects\\_en.cfm?action=detail&backfuse=jsview&postcard\\_id=8660](http://enrd.ec.europa.eu/policy-in-action/rdp_view/en/view_projects_en.cfm?action=detail&backfuse=jsview&postcard_id=8660)

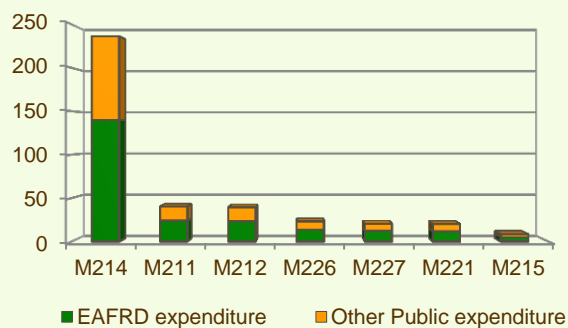
## Axis 2 - Improving the environment and the countryside

Axis 2 focuses on Agri-environment payments (M214). This measure represents the majority of the Axis 2 realised expenditure (see figure 4), and has been allocated nearly 23% of the total public budget programmed in the Calabria RDP for 2007-2013.

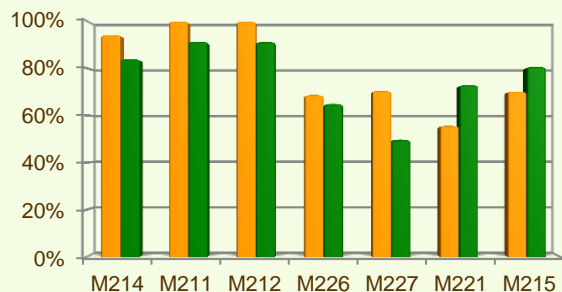
- ❖ Natural handicap payments to farmers in mountain areas (M211) have spent all of its budget.
- ❖ Agri-environment payments (M214) and Payments to farmers in areas with handicaps, other than mountain (M212) have used each 94% and 90% of their programmed expenditure.
- ❖ Non-productive investments – forestry (M227), Animal welfare payments (M215) and Restoring forestry potential and introducing prevention actions (M226), have used 70% of their programmed expenditure.
- ❖ First afforestation of agricultural land (M221) has spent 56% of its budget.
- ❖ Non-productive investments – agriculture (M216), has utilised 43% of its programmed expenditure.
- ❖ The measure on First afforestation of non-agricultural land (M223) has utilised 27% of its allocated budget up to the end of 2013.

Figure 5 indicates the progress of the total public expenditure of the most important measures of Axis 2 against the 2007-2013 budgets, in comparison to the National level.

**Figure 4: Axis 2 - Total Public expenditure per measure in million EURO (2007-2013)**



**Figure 5: Axis 2 – Total public expenditure (2007-2013) against 2007-13 budgets, main measures**

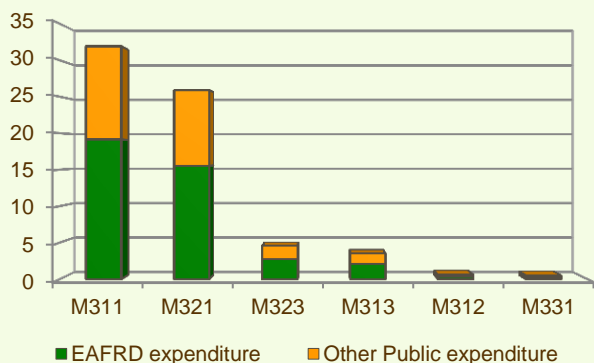


■ Total Public expenditure (%) against 2007-2013 budgets / Regional level  
■ Total Public expenditure (%) against 2007-2013 budgets / National level

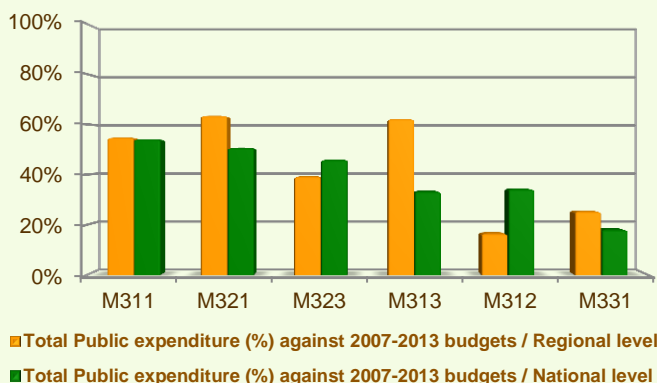
# CALABRIA - ITALY

## Axis 3 - Quality of life in rural areas and diversification of the rural economy

**Figure 6: Axis 3 - Total Public expenditure per measure in million EURO (2007-2013)**



**Figure 7: Axis 3 – Total public expenditure (2007-2013) against 2007-13 budgets, main measures**



Axis 3 of the Calabria RDP focuses on Diversification into non-agricultural activities (M311) and Basic services for the economy and rural population (M321) which together represent nearly 81% of the Axis budget.

When comparing expenditure (figure 6) per measure up to 2013 it is observed that:

- ❖ Three measures have spent between 55-65% of their planned budgets, namely:
  - Basic services for the economy and rural population (M321), 64%
  - Encouragement of tourism activities measure (M313), 62% and
  - Diversification into non-agricultural activities (M311), 55%.
- ❖ The measure on Conservation and upgrading of the rural heritage (M323) has spent 39% of its allocated budget.
- ❖ Training and information (M331) has utilised 25% of its allocated budget.
- ❖ Support for business creation and development (M312) has utilised nearly 17% of its programmed expenditure up to the end of 2013.

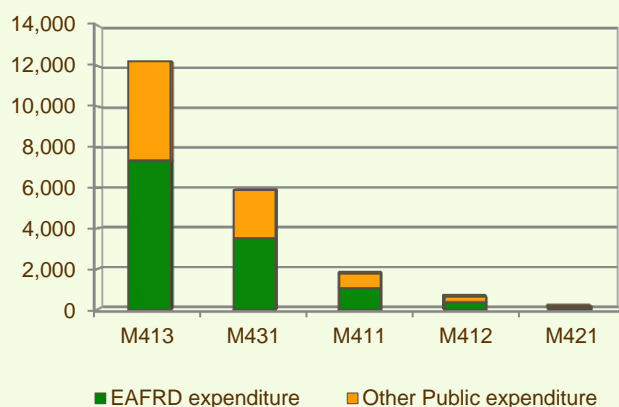
Figure 7 indicates the progress of the total public expenditure of the most important measures of Axis 3 against the 2007-2013 budgets, in comparison to the National level.

## Axis 4 - Leader

The Leader Axis in the Calabria RDP has allocated budget of €62 million out of which €21 million was spent by 2013. Within the Axis, emphasis has been given to Quality of life/diversification (M413) which was allocated the largest share of funds.

- ❖ As shown in figure 8, Running the LAG, skills acquisition, animation (M431) has used nearly 77% of its programmed expenditure.
- ❖ Quality of life/diversification (M413) has spent 31% of its programmed budget.
- ❖ Competitiveness (M411) and Environment/land management (M412) have used correspondingly 19% and 28% of their planned budgets.
- ❖ Up to the end of 2013, minimal expenditure has been recorded for Implementing cooperation projects (M421).

**Figure 8: Axis 4 - Total Public expenditure per measure in thousand EURO (2007-2013)**

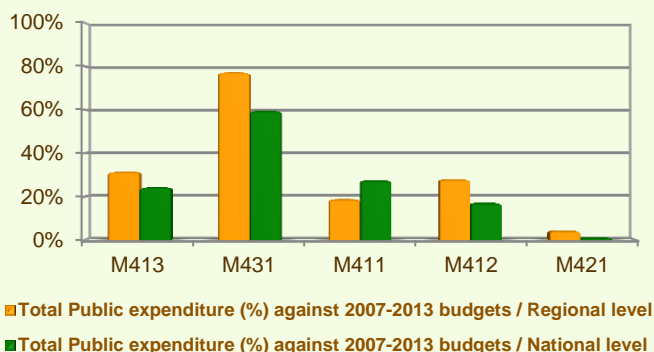


# CALABRIA - ITALY

## Axis 4 - Leader

Figure 9 indicates the progress of the total public expenditure of the most important measures of Axis 4 against the 2007-2013 budgets, in comparison to the National level.

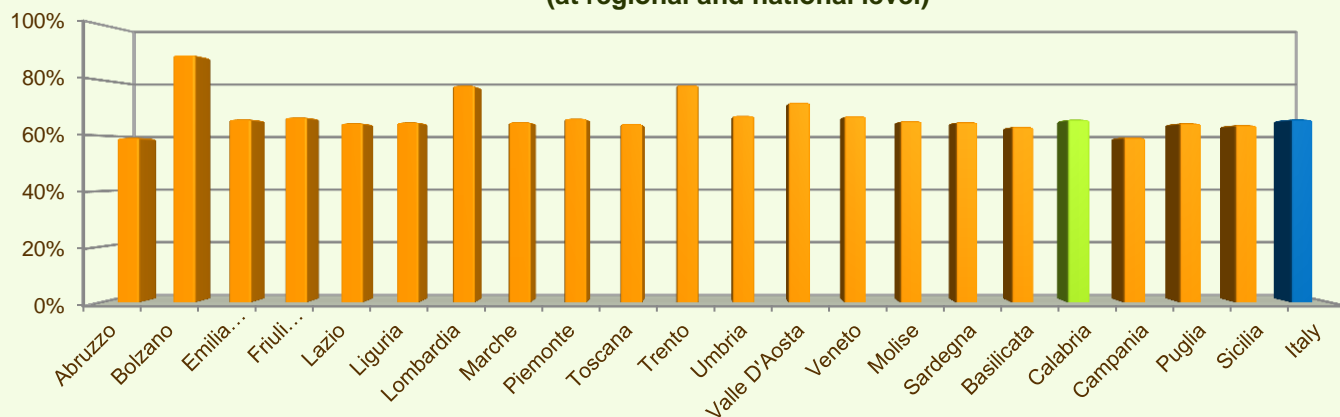
**Figure 9: Axis 4 – Total public expenditure (2007-2013) against 2007-13 budgets, main measures**



## Summary

- ✓ Within seven years of implementation, the Calabria RDP has utilised nearly 66% (see figure 10) of the total public expenditure planned for the current Programming Period (including post Health Check and the European Economic Recovery Package modifications).
- ✓ Agri-environment payments (M214) is the measure with the highest allocated budget in the Calabria RDP. Up to 2013, it has utilised 95% of its available budget and represents 33% of the total public expenditure of the programme.
- ✓ Modernisation of agricultural holdings (M121) has the second largest budget in the Calabria RDP and the utilised expenditure is 50% of its allocated funds. M121 represents 12% of the total public expenditure of the programme.
- ✓ The third largest measure budget is for Adding value to agricultural and forestry products (M123) which has used almost 54% of its programmed total public expenditure and represents 7% of the total public expenditure of the programme.

**Figure 10: Progress of total public expenditure up to 2013 (at regional and national level)**



*Source of the data: 1) Programmed expenditures 2007-2013: RDP budget allocation following Health Check revision (December 2013); 2) Expenditures 2007-2013: DG AGRI 3) Output indicators data are available only at National level; therefore at regional level a comparison of financial implementation progress is provided between the regional RDPs.*

For further detailed information on financial / physical and output indicators data please refer to the dedicated ENRD website section on Monitoring Indicators.