

CORSE - FRANCE

Basic Information:

The Corse Rural Development Programme (RDP) has budgeted for 2007-2013 a total public expenditure of €175 million (European Agricultural Fund for Rural Development and Member State contribution). At the end of 2013, €142 million were spent out of the allocated budget (see Figure 1).

Axis 1 (Improving the competitiveness of the agricultural and forestry sector), has utilised 80% of its allocated budget.

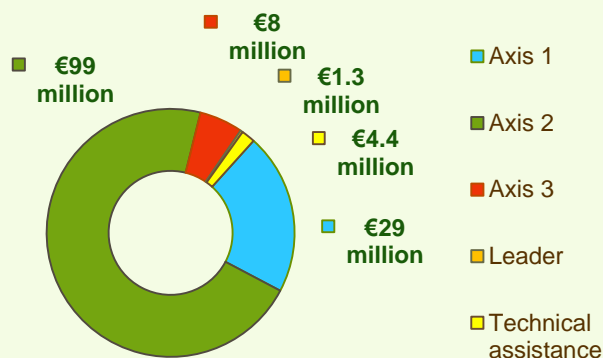
Axis 2 (Improving the environment and the countryside) has utilised almost 95% of its programmed expenditure.

Axis 3 (Improving the quality of life in rural areas) has utilised 40% of its budget.

Axis 4 (Leader) has utilised approximately 17% of the programmed expenditure.



Figure 1: Total public expenditure per axis in (2007-2013)



Axis 1 - Improving the competitiveness of the agricultural and forestry sector

Figure 2: Axis 1 total public expenditure per measure in million EURO (2007-2013)

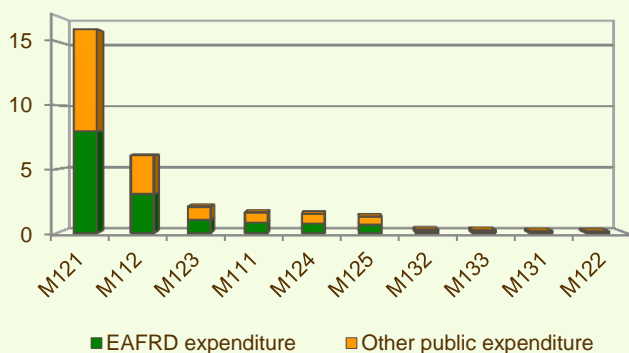
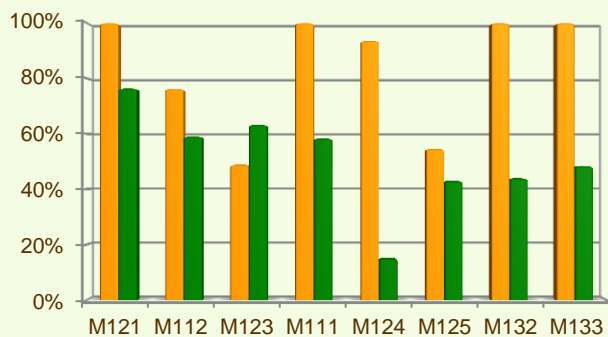


Figure 3: Axis 1 public expenditure (2007-2013) against 2007-2013 budgets, main measures



■ Total public expenditure (%) against 2007-2013 budgets / Regional level
 ■ Total public expenditure (%) against 2007-2013 budgets / National level

Axis 1 places an emphasis on Modernisation of agricultural holdings (M121), allocating to this measure almost 43% of the overall budgeted funds for Axis 1. Analysis of the expenditure rates per measure up to 2013 shows that:

- ❖ Participation of farmers in food quality actions (M132), Information and promotion activities (M133), Modernisation of agricultural holdings (M121) and Vocational training and information actions (M111) have spent all of their allocated budgets.
- ❖ Cooperation for development of new products, processes and technologies in the agriculture and food sector and in the forestry sector (M124) has used 94% of its planned allocation.
- ❖ Setting up of young farmers (M112) has spent 76% of its budget.
- ❖ Three measures have utilised between 39% and 55%, of their allocated budgets, namely:
 - Meeting standards based on EU legislation (M131), 39%;
 - Adding value to agricultural and forestry products (M123), 49% and
 - Infrastructure related to the development and adaptation of agriculture and forestry (M125), 55%.
- ❖ Setting up of management, relief and advisory services (M115) has used 22% of its funds.
- ❖ Two more measures (M113, M122) have used less than 10% of their programmed expenditure.

Figure 3 indicates the progress of the total public expenditure of the most important measures of Axis 1 against the 2007-2013 budgets, in comparison to the National level.

CORSE - FRANCE

Axis 2 - Improving the environment and the countryside

Axis 2 focuses on Natural handicap payments to farmers in mountain areas (M211), which represents the majority of the Axis 2 utilised expenditure (see Figure 4) and has been allocated 42% of the total public budget programmed in the Corse RDP for 2007-2013.

- ❖ The measure Natural handicap payments to farmers in mountain areas (M211) has utilised all of its budget.
- ❖ The measure Non productive investments – agriculture (M216) has utilised 95% of its programmed budget.
- ❖ The Agri-environment payments measure (M214) has utilised 58% of its programmed expenditure.
- ❖ Restoring forestry potential and introducing prevention actions (M226) has used 54% of its planned allocation.
- ❖ Non-productive investments – forestry (M227) has spent 10% of its allocated funds.
- ❖ No expenditure has been fulfilled on Payments to farmers in areas with handicaps, other than mountain areas (M112) and Forest environment payments (225).

Figure 5 indicates the progress of the total public expenditure of the most important measures of Axis 2 against the 2007-2013 budgets, in comparison to the National level.

Figure 4: Axis 2 total public expenditure per measure in million EURO (2007-2013)

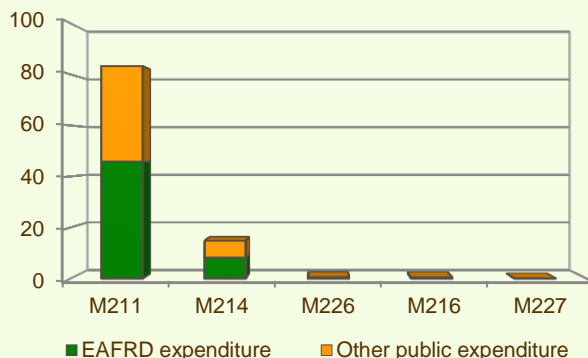
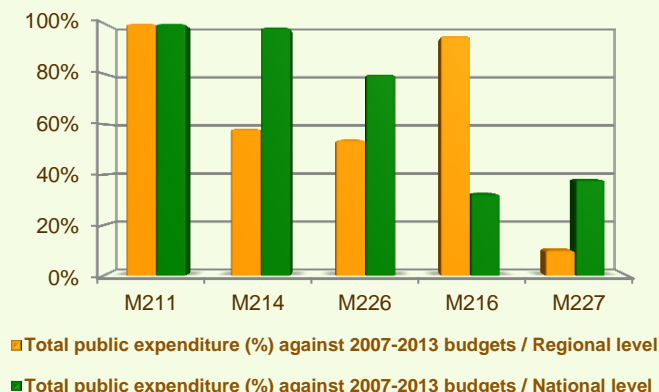
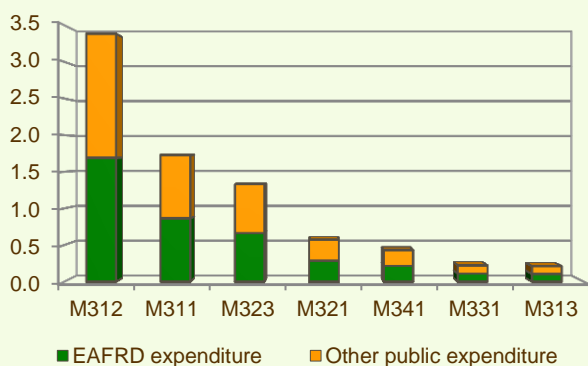


Figure 5: Axis 2 total public expenditure (2007-2013) against 2007-2013 budgets, main measures



Axis 3 - Quality of life in rural areas and diversification of the rural economy

Figure 6: Axis 3 total public expenditure per measure in million EURO (2007-2013)



Axis 3 of the Corse RDP focuses on Conservation and upgrading of the rural heritage (M323) and Support for business creation and development (M312), which together represent more than 65% of the Axis budget and most of the total public expenditure (see Figure 6).

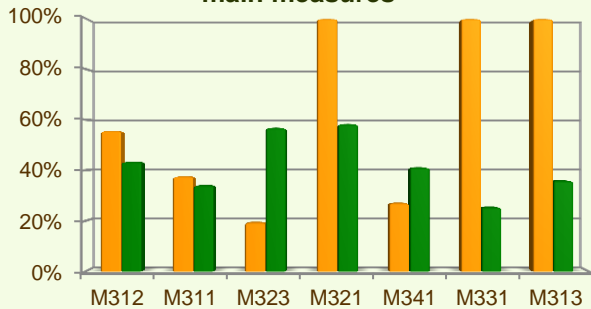
When comparing the expenditure rates per measure up to 2013 it is observed that:

- ❖ Basic services for the economy and rural population (M321), Training and information (M331) and Encouragement of tourism activities (M313) have utilised all of their allocated budget.
- ❖ Support for business creation and development (M312) has spent around 56% of its budget.
- ❖ Diversification into non-agricultural activities (M311) has used 38% of its allocated funds.

CORSE - FRANCE

Axis 3 - Quality of life in rural areas and diversification of the rural economy

Figure 7: Axis 3 total public expenditure (2007-2013) against 2007-2013 budgets, main measures



■ Total public expenditure (%) against 2007-2013 budgets / Regional level
■ Total public expenditure (%) against 2007-2013 budgets / National level

❖ Finally, two measures have so far used 19-27% of their programmed budgets:

- Skills acquisition and animation measure with a view to preparing and implementing a local development strategy (M341), 27%
- Conservation and upgrading of the rural heritage (M323), 19%.

Figure 7 indicates the progress of the total public expenditure of the most important measures of Axis 3 against the 2007-2013 budgets, in comparison to the National level.

Axis 4 - Leader

The Leader Axis in the Corse RDP has allocated budget of €8 million. Within the Axis, emphasis has been given to the Quality of life/diversification (M413), which has been allocated 65% of the total axis funds.

- ❖ The measure Running the LAG, skills acquisition, animation (M431) has utilised 43% of its allocated budget.
- ❖ Quality of life/diversification (M413) has used 12% of its funds.
- ❖ Implementing cooperation projects (M421), and Environment/land management (412) have spent around 6% of their planned allocation.
- ❖ For Competitiveness (M411) minimal expenditure has been recorded up to the end of 2013.

Figure 9 indicates the progress of the total public expenditure of the most important measures of Axis 4 against the 2007-2013 budgets, in comparison to the National level.

Figure 8: Axis 4 total public expenditure per measure in thousand EURO (2007-2013)

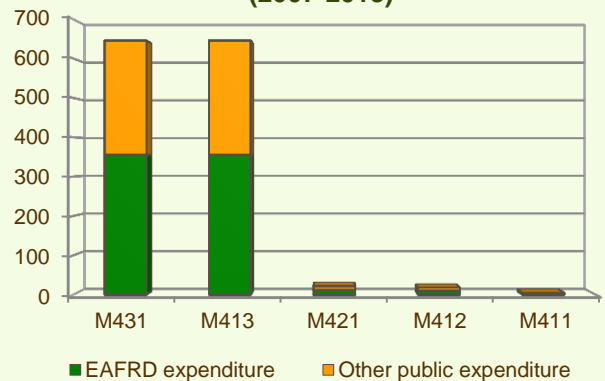
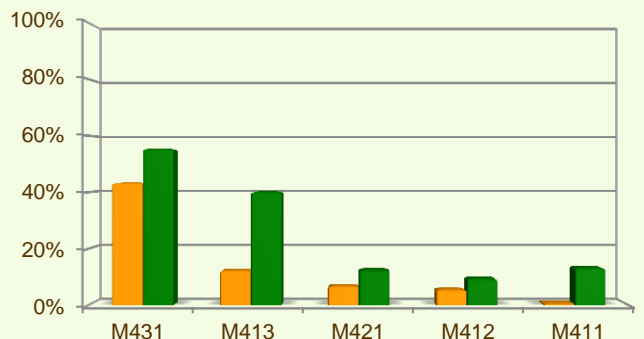


Figure 9: Axis 4 total public expenditure (2007-2013) against 2007-2013 budgets, main measures



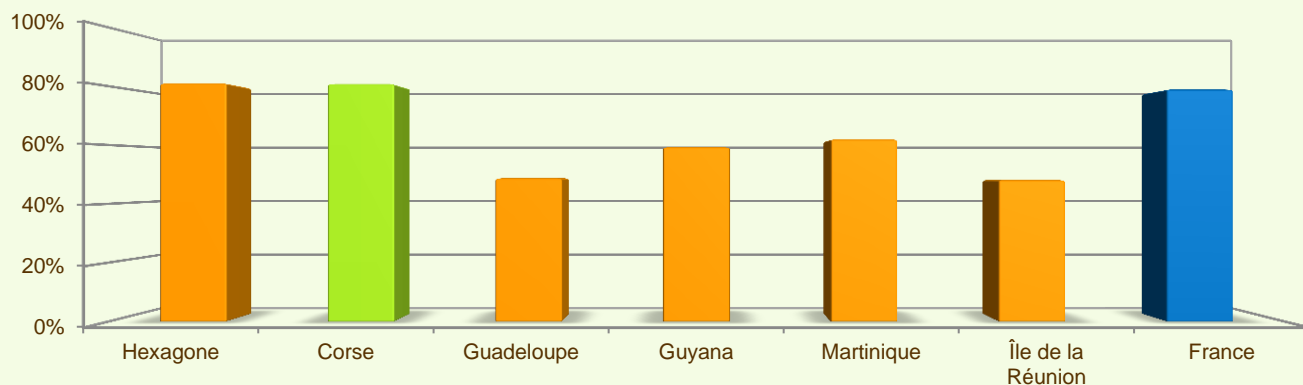
■ Total public expenditure (%) against 2007-2013 budgets / Regional level
■ Total public expenditure (%) against 2007-2013 budgets / National level

CORSE - FRANCE

Summary

- ✓ Within seven years of implementation, the Corse RDP has utilised 81% (see Figure 10) of the total public expenditure planned for the current Programming Period (including post Health Check and the European Economic Recovery Package modifications).
- ✓ Natural handicap payments to farmers in mountain areas (M211) is the measure with the highest allocated budget in the Flanders RDP. Up to 2013, it has utilised all of its available budget and represents 59% of the total public expenditure of the programme.
- ✓ Agri-environment payments (M214) has the second largest budget in the Corse RDP and the utilised expenditure is 58% of its allocated funds. M214 represents 10% of the total public expenditure of the programme.
- ✓ The third largest measure budget is for Modernisation of agricultural holdings (M121), which has used all of its programmed total public expenditure and represents 11% of the total public expenditure of the programme.

Figure 10: Progress of total public expenditure up to 2013 (at regional and national level)



Source of the data:

1) *Programmed expenditures 2007-2013: RDP budget allocation following Health Check revision (December 2013)*

2) *Expenditures 2007-2013: DG AGRI*

3) *Output indicators data are available only at National level; therefore at regional level a comparison of financial implementation progress is provided between the regional RDPs.*



<http://enrd.ec.europa.eu>

For further detailed information on financial / physical and output indicators data please refer to the dedicated ENRD website section on Monitoring Indicators.