

CANTABRIA - SPAIN

Basic Information:

The Cantabria Rural Development Programme (RDP) has budgeted for 2007-2013 a total public expenditure of €160 million (European Agricultural Fund for Rural Development and Member State contribution). At the end of 2013, €120 million were spent out of the allocated budget (see Figure 1).

Axis 1 (Improving the competitiveness of the agricultural and forestry sector) has utilised 75% of its allocated budget.

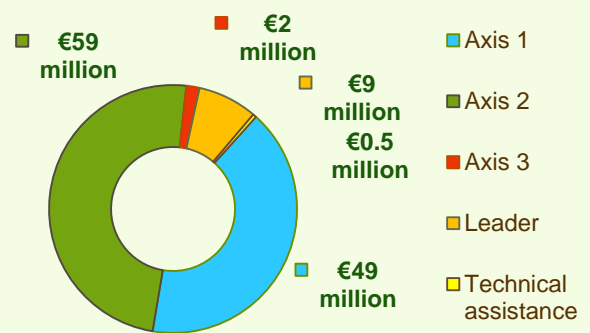
Axis 2 (Improving the environment and the countryside) has utilised 82% of its programmed expenditure.

Axis 3 (Improving the quality of life in rural areas) has utilised 72% of its allocated budget.

Axis 4 (Leader) has utilised 51% of its programmed expenditure.



Figure 1: Total public expenditure per axis in Cantabria (2007-2013)



Axis 1 - Improving the competitiveness of the agricultural and forestry sector

Figure 2: Axis 1 total public expenditure per measure in million EURO (2007-2013)

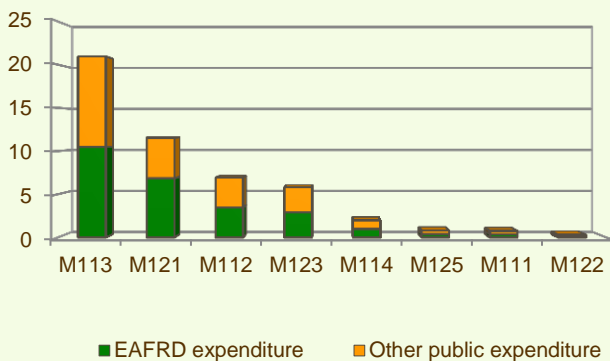
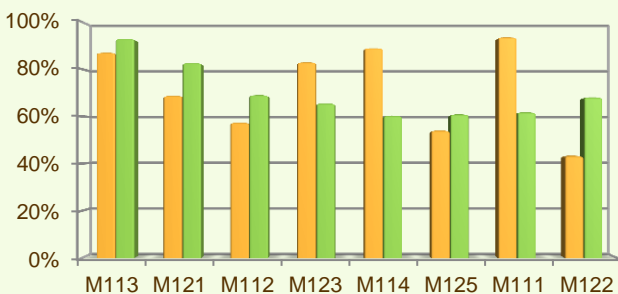


Figure 3: Axis 1 total public expenditure (2007-2013) against 2007-2013 budgets, main measures



■ Total public expenditure (%) against 2007-2013 budgets / Regional level

■ Total public expenditure (%) against 2007-2013 budgets / National level

Axis 1 places an emphasis on Early retirement (M113) allocating to this measure 37%, of the overall budgeted funds for Axis 1.

Analysis of the expenditure rates per measure up to 2013 shows that:

- ❖ Five measures have utilised 80% or more of their programmed expenditure, namely:
 - Vocational training and information actions (M111), 94%
 - Use of advisory services (M114), 89%
 - Early retirement (M113), 87%
 - Setting up of management, relief and advisory services (M115), 86% and
 - Adding value to agricultural and forestry products (M123), 83%.
- ❖ Three measures have utilised 50-70% of their programmed expenditure, namely:
 - Modernization of agricultural holdings (M121), 69%
 - Setting up of young farmers (M112), 58%
 - Infrastructure related to the development and adaptation of agriculture and forestry (M125), 54%
- ❖ Improvement of the economic value of forests (M122) has spent 43% of its budget.

Figure 3 indicates the progress of the total public expenditure of the most important measures of Axis 1 against the 2007-2013 budgets, in comparison to the National level.

CANTABRIA - SPAIN

Axis 2 - Improving the environment and the countryside

Axis 2 focuses on Natural handicap payments to farmers in mountain areas (M211) and Agri-environment payments (M214). These measures together represent 88% of the Axis 2 expenditure (see Figure 4) and have been allocated 38% of the total public budget programmed in the Cantabria RDP for 2007-2013.

- ❖ The measure on Non-productive investments – forestry (M227) has utilised 98% of its allocated budget.
- ❖ Two measures have utilised 80-90% of their allocated budgets, namely:
 - Natural handicap payments to farmers in mountain areas (M211), 86% and
 - Agri-environment payments (M214), 84%
- ❖ Two measures have utilised 60-80% of their allocated budgets, namely:
 - First afforestation of agricultural land (M221), 78% and
 - Restoring forestry potential and introducing prevention actions (M226), 62%

Figure 5 indicates the progress of the total public expenditure of the most important measures of Axis 2 against the 2007-2013 budgets, in comparison to the National level.

Figure 4: Axis 2 total public expenditure per measure in million EURO (2007-2013)

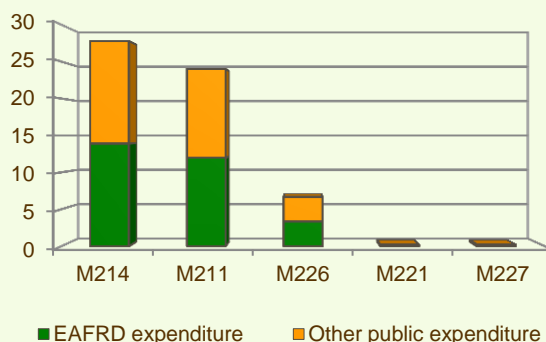
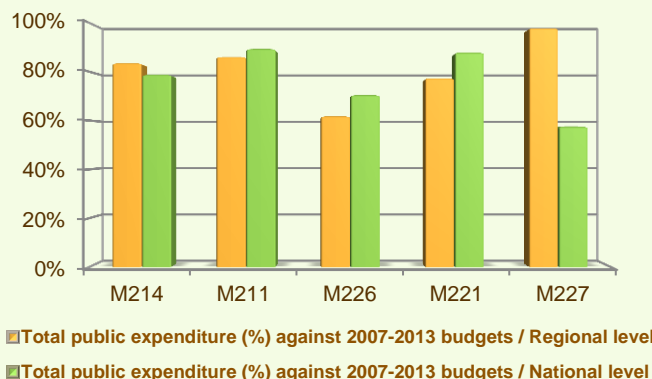
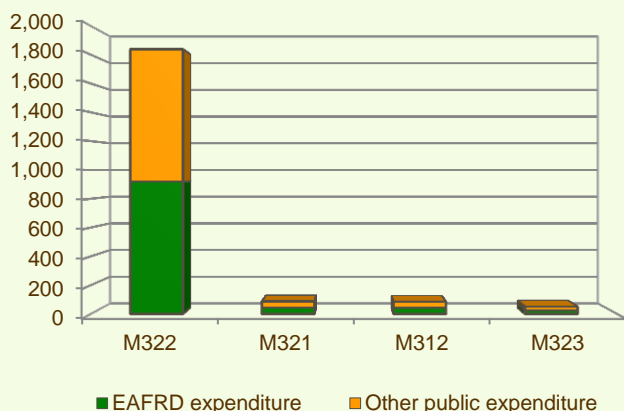


Figure 5: Axis total public expenditure (2007-2013) against 2007-2013 budgets, main measures



Axis 3 - Quality of life in rural areas and diversification of the rural economy

Figure 6: Axis 3 total public expenditure per measure in thousand EURO (2007-2013)



Axis 3 of the Cantabria RDP focuses on Village renewal and development (M322) which represents 85% of the Axis budget and 89% of the Axis total public expenditure (see Figure 6).

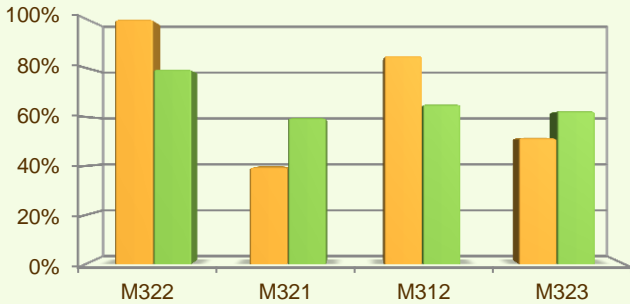
When comparing the expenditure rates per measure up to 2013, it is observed that:

- ❖ The measure Support for business creation and development (M312) has utilised 85% of its allocated budget.
- ❖ The measure Village renewal and development (M322) has utilised 75% of its programmed budget.
- ❖ The Conservation and upgrading of the rural heritage (M323) measure has utilised 52% of its programmed budget.

CANTABRIA - SPAIN

Axis 3 - Quality of life in rural areas and diversification of the rural economy

Figure 7: Axis 3 total public expenditure (2007-2013) against 2007-2013 budgets, main measures



■ Total public expenditure (%) against 2007-2013 budgets / Regional level

■ Total public expenditure (%) against 2007-2013 budgets / National level

- ❖ The measure on Basic services for the economy and rural population (M321) has utilised 40% of its programmed budget

Figure 7 indicates the progress of the total public expenditure of the most important measures of Axis 3 against the 2007-2013 budgets, in comparison to the National level.

Axis 4 - Leader

The Leader Axis in the Cantabria RDP has allocated budget of almost €18.5 million, out of which €9 million have been spent by 2013. Within the Axis, emphasis has been given to the Quality of life/diversification (M413) which has been allocated 72% of the total public programmed funds.

When comparing the expenditure rates per measure up to 2013, it is observed:

- ❖ The measure on Running the LAG, skills acquisition, animation (M431) has utilised 73% of its allocated funds.
- ❖ The measure on Quality of life/diversification (M413) has utilised 49% of its allocated budget
- ❖ The measure on Competitiveness (M411) has spent 27% of its total programmed funds
- ❖ The measure on Implementing cooperation projects (M421) has not utilised any of its programmed expenditure.

Figure 9 indicates the progress of the total public expenditure of the most important measures of Axis 4 against the 2007-2013 budgets, in comparison to the National level.

Figure 8: Axis 4 total public expenditure per measure in thousand EURO (2007-2013)

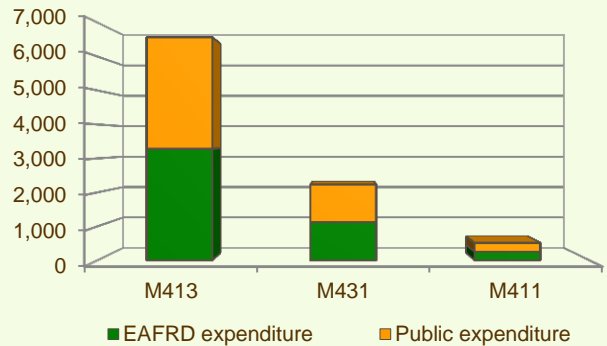
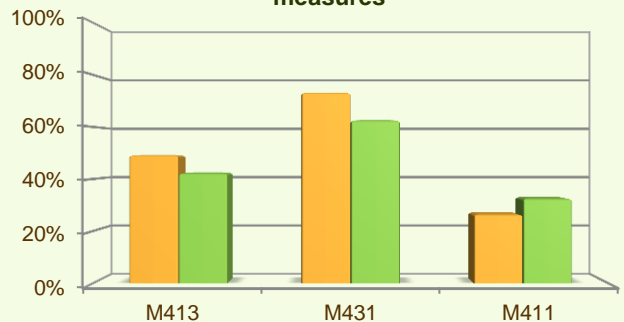


Figure 9: Axis 4 total public expenditure (2007-2013) against 2007-2013 budgets, main measures



■ Total public expenditure (%) against 2007-2013 budgets / Regional level

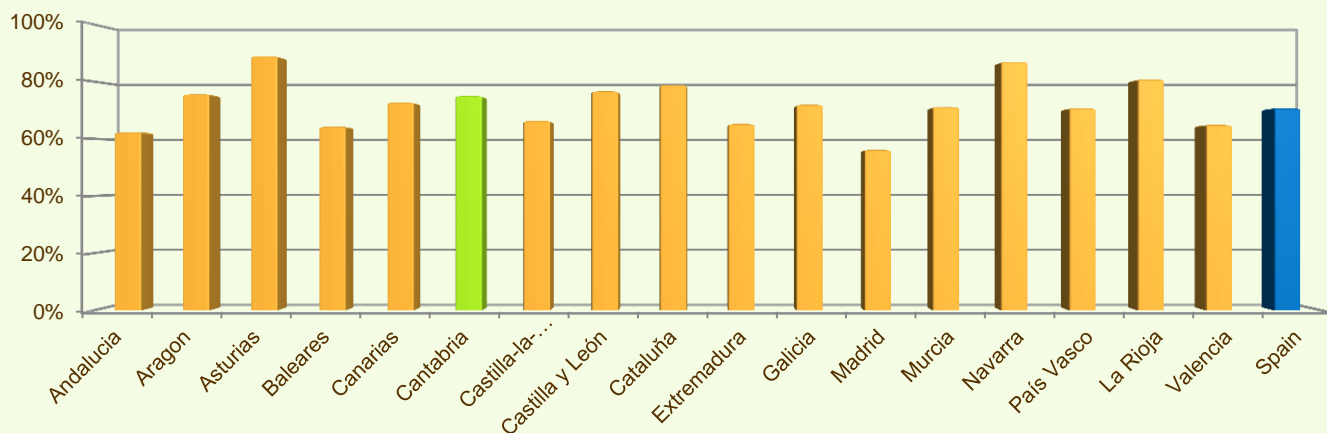
■ Total public expenditure (%) against 2007-2013 budgets / National level

CANTABRIA - SPAIN

Summary

- ✓ Within seven years of implementation, the Cantabria RDP has utilised 75% (see Figure 10) of the total public expenditure planned for the current Programming Period (including post Health Check and the European Economic Recovery Package modifications).
- ✓ Agri-environment payments (M214) is the measure with the highest allocated budget in the Cantabria RDP. Up to 2013, it has utilised almost 84% of its available budget and represents 23% of the total public expenditure of the programme.
- ✓ Natural handicap payments to farmers in mountain areas (M211) has the second largest budget in the Cantabria RDP and the utilised expenditure is 86% of its allocated funds. M214 represents 20% of the total public expenditure of the programme.
- ✓ The third largest measure budget is for Early retirement (M113), which has used 87% of its programmed total public expenditure and represents 17% of the total public expenditure of the programme.

Figure 10: Progress of total public expenditure up to 2013 (at regional and national level)



Source of the data:

1) Programmed expenditures 2007-2013: RDP budget allocation following Health Check revision (December 2013)

2) Expenditures 2007-2013: DG AGRI

3) Output indicators data are available only at National level; therefore at regional level a comparison of financial implementation progress is provided between the regional RDPs.



<http://enrd.ec.europa.eu>

For further detailed information on financial / physical and output indicators data please refer to the dedicated ENRD website section on Monitoring Indicators.