

# ASTURIAS - SPAIN

## Basic Information:

The Asturias Rural Development Programme (RDP) has budgeted for 2007-2013 a total public expenditure of €428 million (European Agricultural Fund for Rural Development and Member State contribution). At the end of 2013, €382 million were spent out of the allocated budget (see Figure 1).

**Axis 1** (Improving the competitiveness of the agricultural and forestry sector) has utilised 90% of its allocated budget.

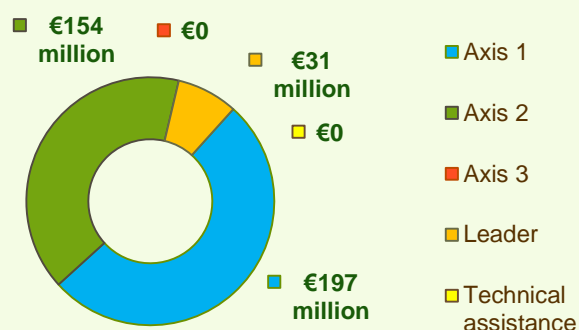
**Axis 2** (Improving the environment and the countryside) has utilised 96% of its programmed expenditure.

**Axis 3** (Improving the quality of life in rural areas) has not been allocated any budget.

**Axis 4** (Leader) has utilised 63% of its programmed expenditure.

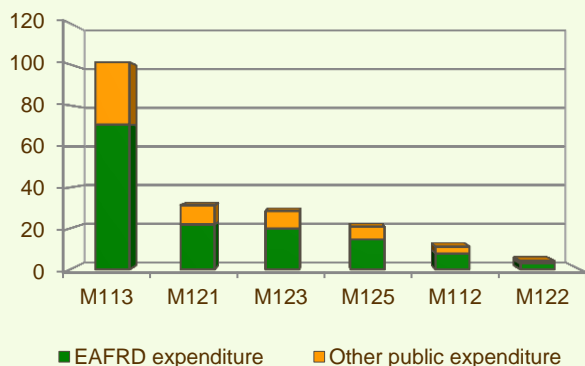


**Figure 1: Total public expenditure per axis in Asturias (2007-2013)**

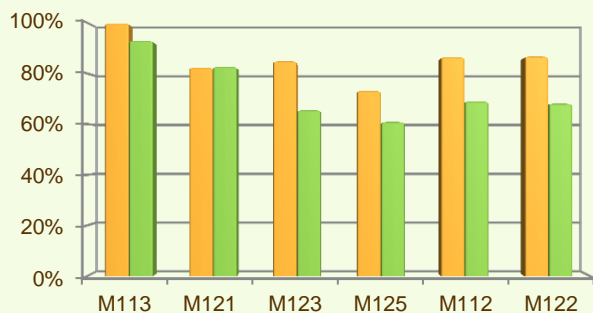


## Axis 1 - Improving the competitiveness of the agricultural and forestry sector

**Figure 2: Axis 1 total public expenditure per measure in million EURO (2007-2013)**



**Figure 3: Axis 1 total public expenditure (2007-2013) against 2007-2013 budgets, main measures**



■ Total public expenditure (%) against 2007-2013 budgets / Regional level

■ Total public expenditure (%) against 2007-2013 budgets / National level

Axis 1 places an emphasis on Early retirement (M113) allocating to this measure 46%, of the overall budgeted funds for Axis 1. Analysis of the expenditure rates per measure up to 2013 shows that:

- ❖ Four measures have utilised 85% or more of their programmed expenditure, namely:
  - Early retirement (M113), 100%
  - Setting up young farmers (M112), 87%
  - Improvement of the economic value of forests (M122), 87% and
  - Adding value to agricultural and forestry products (M123), 85%.
- ❖ The measure on Modernisation of agricultural holdings (M121) has utilised 82% of its allocated budget.
- ❖ The measure on Infrastructure related to the development and adaptation of agriculture and forestry (M125) has spent 73% of its programmed expenditure.

Figure 3 indicates the progress of the total public expenditure of the most important measures of Axis 1 against the 2007-2013 budgets, in comparison to the National level.

# ASTURIAS - SPAIN

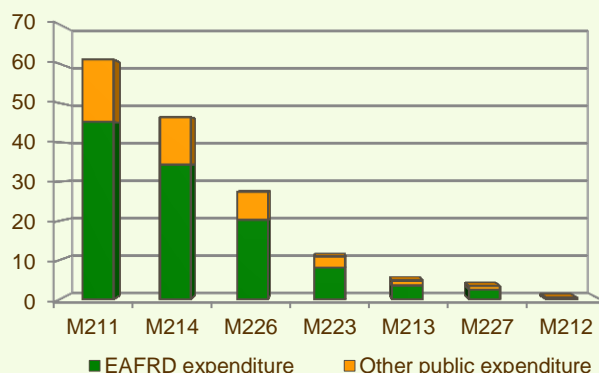
## Axis 2 - Improving the environment and the countryside

Axis 2 focuses on Natural handicap payments to farmers in mountain areas (M211) and Agri-environment payments (M214). These measures together represent 70% of the Axis 2 utilised expenditure (see Figure 4) and have been allocated 25% of the total public budget programmed in the Asturias RDP for 2007-2013.

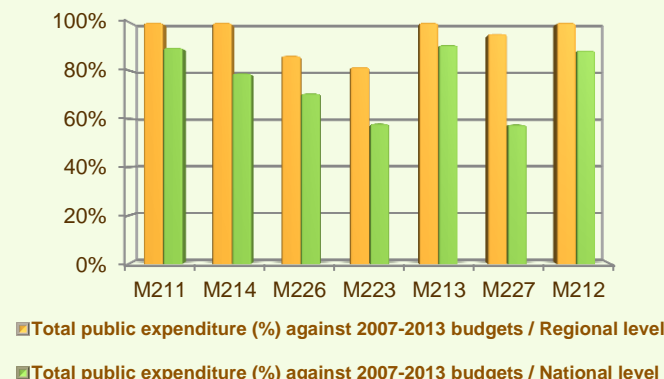
- ❖ Four out of the seven measures offered by the Axis, have utilised all of their allocated budgets, namely:
  - Payments to farmers in areas with handicaps, other than mountain areas (M212), 100%
  - Agri-environment payments (M214), 100%
  - Natural handicap payments to farmers in mountain areas (M211), 100% and
  - Natura 2000 payments and payments linked to Directive 2000/60/EC (M213), 100%.
- ❖ Three measures have utilised 80-95% of their allocated budgets, namely:
  - Non-productive investments – forestry (M227), 95%
  - Restoring forestry potential and introducing prevention actions (M226), 86% and
  - First afforestation of non-agricultural land (M223), 82%.

Figure 5 indicates the progress of the total public expenditure of the most important measures of Axis 2 against the 2007-2013 budgets, in comparison to the National level.

**Figure 4: Axis total public expenditure per measure in million EURO (2007-2013)**



**Figure 5: Axis 2 total public expenditure (2007-2013) against 2007-2013 budgets, main measures**

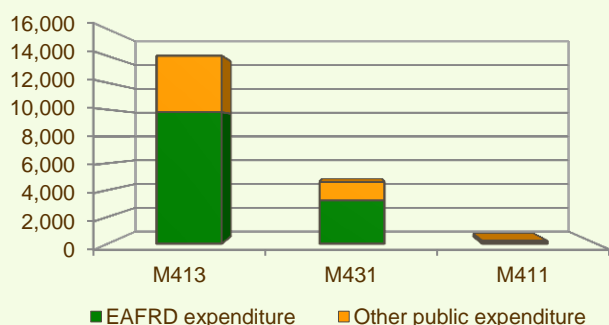


## Axis 3 - Quality of life in rural areas and diversification of the rural economy

Axis 3 of the Asturias RDP has no allocated budget.

## Axis 4 - Leader

**Figure 6: Axis 4 total public expenditure per measure in thousand EURO (2007-2013)**



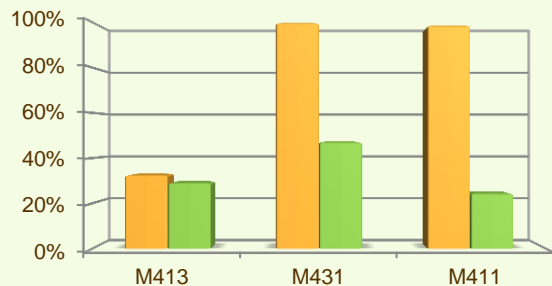
The Leader Axis in the Asturias RDP has allocated budget of €48.5 million out of which €30.5 million have been spent by 2013. Within the Axis, emphasis has been given to the Quality of life/diversification (M413) which has been allocated the largest share of funds.

- ❖ When comparing the expenditure rates per measure up to 2013 it is observed that Running the LAG, skills acquisition, animation (M431) and Competitiveness (M411) have utilised almost all of their allocated total public expenditure (see Figure 6).

# ASTURIAS - SPAIN

## Axis 4 - Leader

**Figure 7: Axis 4 total public expenditure (2007-2013) against 2007-2013 budgets, main measures**



■ Total public expenditure (%) against 2007-2013 budgets / Regional level

■ Total public expenditure (%) against 2007-2013 budgets / National level

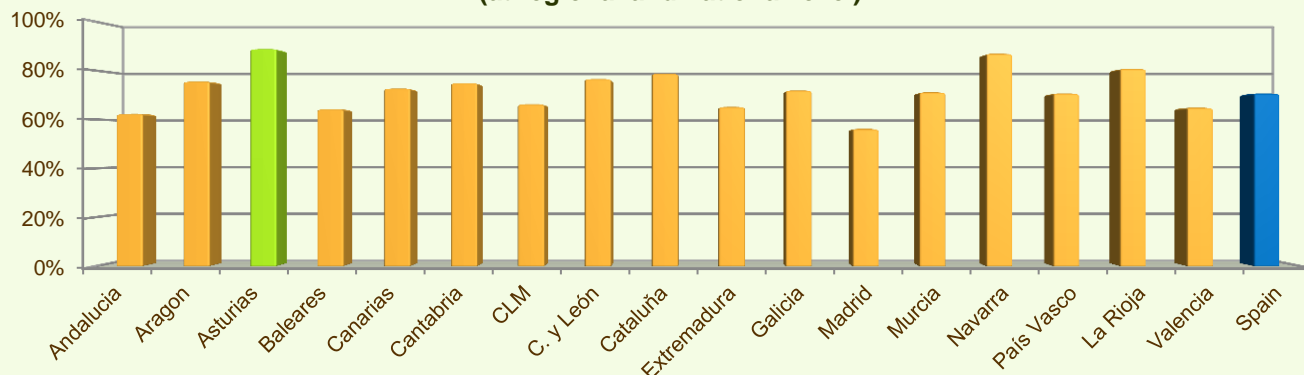
- ❖ The measure on Quality of life/diversification (M413) has utilised 59% of its allocated funds
- ❖ No expenditure has been recorded for measure Implementing cooperation projects (M421) up to the end of 2013.

Figure 7 indicates the progress of the total public expenditure of the most important measures of Axis 4 against the 2007-2013 budgets, in comparison to the National level.

## Summary

- ✓ Within seven years of implementation, the Asturias RDP has utilised 89% (see Figure 8) of the total public expenditure planned for the current Programming Period (including post Health Check and the European Economic Recovery Package modifications).
- ✓ Early retirement (M113) is the measure with the highest allocated budget in the Asturias RDP. Up to 2013, it has utilised its entire available budget and represents 26% of the total public expenditure of the programme.
- ✓ Natural handicap payments to farmers in mountain areas (M211) has the second largest budget in the Asturias RDP and the utilised expenditure is 100% of its allocated funds. M211 represents 16% of the total public expenditure of the programme.
- ✓ The third largest measure budget is for Agri-environment payments (M214), which has used all of its programmed total public expenditure and represents 12% of the total public expenditure of the programme.

**Figure 8: Progress of total public expenditure up to 2013 (at regional and national level)**



**Source of the data:**

1) Programmed expenditures 2007-2013: RDP budget allocation following Health Check revision (December 2013)

2) Expenditures 2007-2013: DG AGRI

3) Output indicators data are available only at National level; therefore at regional level a comparison of financial implementation progress is provided between the regional RDPs.

For further detailed information on financial / physical and output indicators data please refer to the dedicated ENRD website section on Monitoring Indicators.