

# THÜRINGEN - GERMANY

## Basic Information:

In total the Thüringen Rural Development Programme (RDP) has budgeted for 2007-2013 a total public expenditure of €952 million (European Agricultural Fund for Rural Development and Member State contribution). At the end of 2013, €785 million were spent out of the allocated budget (see figure 1).

**Axis 1** – (Improving the competitiveness of the agricultural and forestry sector), has utilised 78% of its allocated budget.

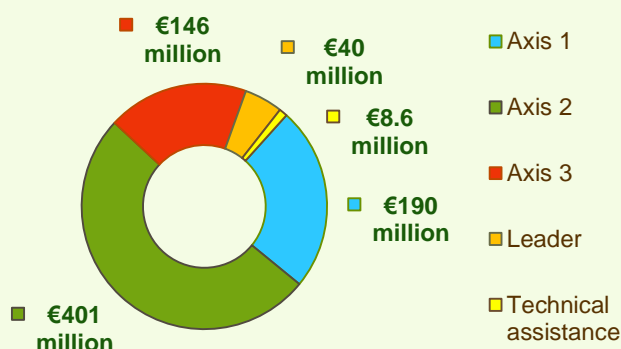
**Axis 2** – (Improving the environment and the countryside), has utilised 87% of its programmed expenditure.

**Axis 3** – (Improving the quality of life in rural areas), has utilised almost 78% of its budget.

**Axis 4** – (Leader) has utilised around 87% of its programmed expenditure.

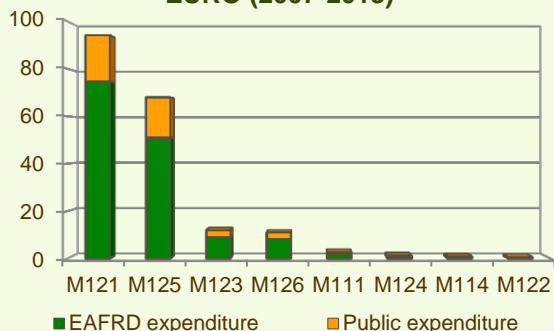


**Figure 1: Total Public Expenditure from 2007 to 2013 in Thüringen & expenditure per Axis**

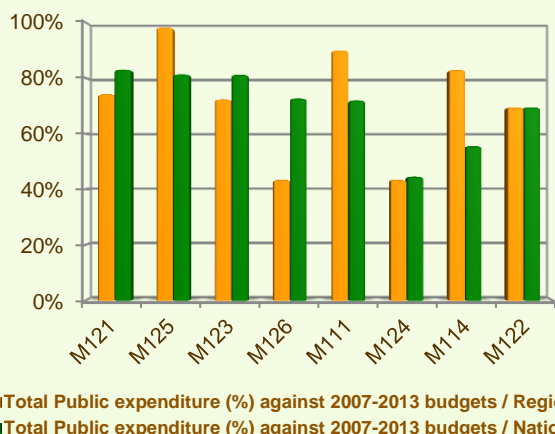


## Axis 1 - Improving the competitiveness of the agricultural and forestry sector

**Figure 2: Axis 1 - Total Public expenditure per measure in million EURO (2007-2013)**



**Figure 3: Axis 1 – Total public expenditure (2007-2013) against 2007-13 budgets, main measures**



The sum of the programmed total public expenditure on Axis 1 places an emphasis on Modernisation of agricultural holdings (M121) and Infrastructure related to the development and adaptation of agriculture (M125), allocating to these two measures 80% of the overall budgeted funds for Axis 1. Analysis of the expenditure rates per measure up to 2013 shows that:

- ❖ Two measures have utilised 90-98% of their allocated expenditure, namely:
  - Vocational training and information actions (M111), 90%;
  - Infrastructure related to the development and adaptation of agriculture (M125), 98%.
- ❖ Four measures have spent 70-83% of their budgets:
  - Improvement of the economic value of forests (M122), 70%;
  - Adding value to agricultural and forestry products (M123), 73%;
  - Modernisation of agricultural holdings (M121), 74%;
  - Use of advisory services (114), 83%.
- ❖ Cooperation for the development of new products, etc. (M124) and Restoring agricultural production potential (M126) have used 43% of their allocated funds.

Figure 3 indicates the progress of the total public expenditure of the most important measures of Axis 1 against the 2007-2013 budgets, in comparison to the National level.

# THÜRINGEN - GERMANY

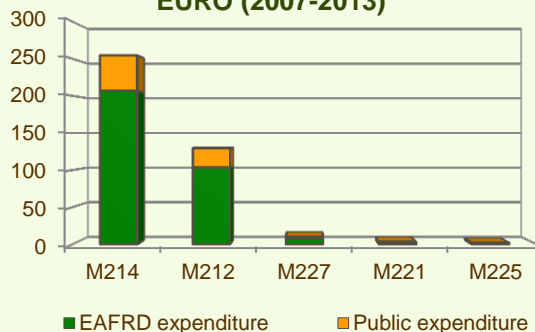
## Axis 2 - Improving the environment and the countryside

Axis 2 focuses on Agri-environment payments (M214) and Payments to farmers in areas with handicaps, other than mountain areas (M212). The two measures represent the majority of the Axis 2 utilised expenditure (see figure 4). Together they have been allocated 46% of the total public budget programmed in the Thüringen RDP for 2007-2013.

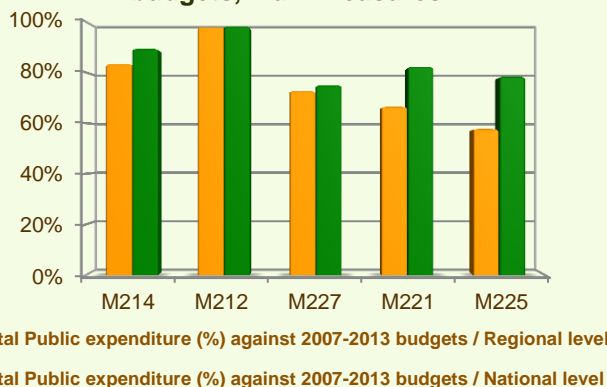
- ❖ Payments to farmers in areas with handicaps, other than mountain areas (M212) has utilised 98% of its planned allocation.
- ❖ Agri-environment payments (M214) has used 84% of their budget.
- ❖ Three measures have spent 58-73% of their planned expenditure:
  - Forest-environment payments (M225), 58%;
  - First afforestation of agricultural land (M221), 67%;
  - Non-productive investments – forestry (M227), 73%.

Figure 5 provides an indication of the progress of the total public expenditure of the most important measures of Axis 2 against the 2007-2013 budgets, in comparison to the National level.

**Figure 4: Axis 2 - Total Public expenditure per measure in million EURO (2007-2013)**

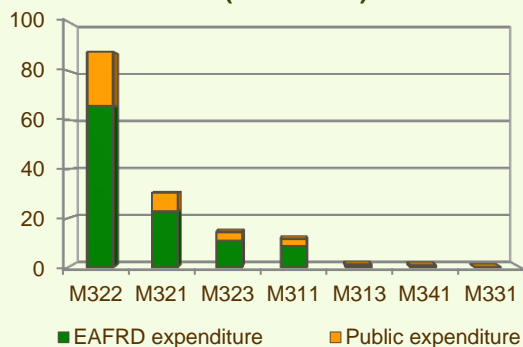


**Figure 5: Axis 2 – Total public expenditure (2007-2013) against 2007-13 budgets, main measures**



## Axis 3 - Quality of life in rural areas and diversification of the rural economy

**Figure 6: Axis 3 - Total Public expenditure per measure in million EURO (2007-2013)**



The sum of programmed total public expenditure on Axis 3 of the Thüringen RDP focuses on Village renewal and development (M322), which represents nearly 60% of the Axis budget.

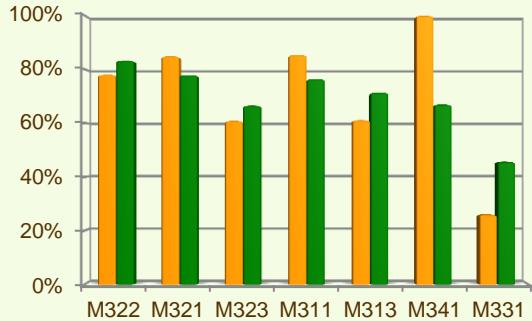
When comparing the expenditure rates per measure up to 2013 it is observed that:

- ❖ Skills acquisition and animation (M341) has realised all of its planned budget.
- ❖ Basic services for the economy and rural population (M321) and Diversification into non-agricultural activities (M311) have both utilised 85% of their allocated funds.
- ❖ Village renewal and development (M322) has spent 78% of its programmed budgets.

# THÜRINGEN - GERMANY

## Axis 3 - Quality of life in rural areas and diversification of the rural economy

**Figure 7: Axis 3 – Total public expenditure (2007-2013) against 2007-13 budgets, main measures**



■ Total Public expenditure (%) against 2007-2013 budgets / Regional level  
 ■ Total Public expenditure (%) against 2007-2013 budgets / National level

- ❖ Two measures have utilised 61% of their allocated budgets:
  - Encouragement of tourism activities (M313);
  - Conservation and upgrading of the rural heritage (M323).
- ❖ Training and information (M331) has used 26% of its programmed expenditure.

Figure 7 provides an indication of the progress of the total public expenditure of the most important measures of Axis 3 against the 2007-2013 budgets, in comparison to the National level.

### Measure 413 project example: Jena-Saale-Holzland – A Bio-Energy Region / Germany – Thüringen

Local groups and individuals in the region are involved in promoting sustainable development in rural areas, especially the bio-energy production.

The project aimed to increase the percentage of bio-energy use, increasing efficiency and reducing costs. Alongside the energy saving measures (technical consultancy to optimise existing heating systems and increase crop diversity, and creation of a 'showroom village' to demonstrate bio-energy concept), public relations and educational initiatives were carried out targeting the local public, including training for youth and children.

During the project the use of biogas in two existing heating systems has been improved, and the bio-energy village helped promoting the concept and establishing a heating network and biogas system. Apart from financial benefits, this enabled some local waste recycling plants to be closed.

**The total cost** of the project was €500,000, out of which €22,000 was EAFRD contribution.

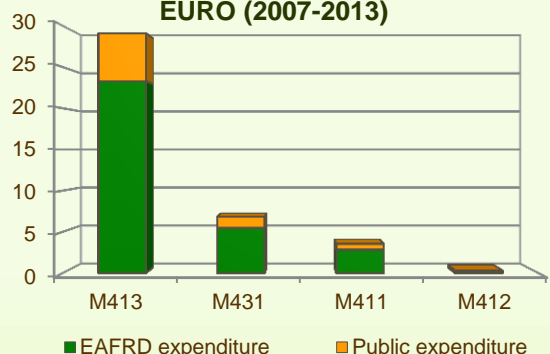
**Link:** [http://enrd.ec.europa.eu/policy-in-action/rdp\\_view/en/view\\_projects\\_en.cfm?action=detail&backfuse=jsview&postcard\\_id=2622](http://enrd.ec.europa.eu/policy-in-action/rdp_view/en/view_projects_en.cfm?action=detail&backfuse=jsview&postcard_id=2622)

## Axis 4 - Leader

The Leader Axis in the Thüringen RDP has allocated budget of approximately €46 million out of which €40 million has been spent by 2013. The largest allocation of funds is on the Quality of life and diversification measure (M413).

When comparing expenditure per measure up to 2013 it is observed that M413 had the largest utilised public expenditure (see figure 8), having spent more than 90% of its allocated funds.

**Figure 8: Axis 4 - Total Public expenditure per measure in million EURO (2007-2013)**



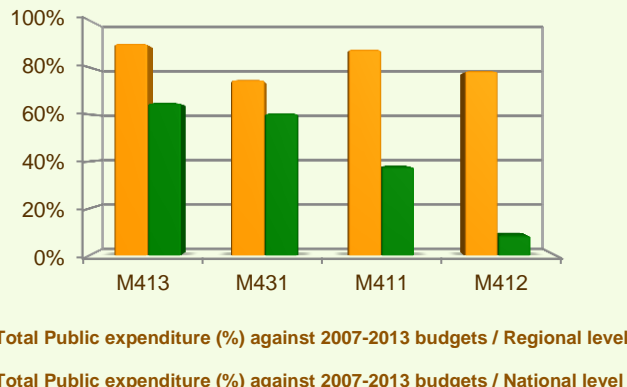
# THÜRINGEN - GERMANY

## Axis 4 - Leader

- ❖ Competitiveness (M411) has used nearly 88% of its budget.
- ❖ Two measures have utilised 75-79% of their programmed expenditure:
  - Running the LAG, skills acquisition, animation (M431), 75%;
  - Competitiveness (M411), 79%.

Figure 9 provides an indication of the progress of the total public expenditure of the most important measures of Axis 4 against the 2007-2013 budgets, in comparison to the National level.

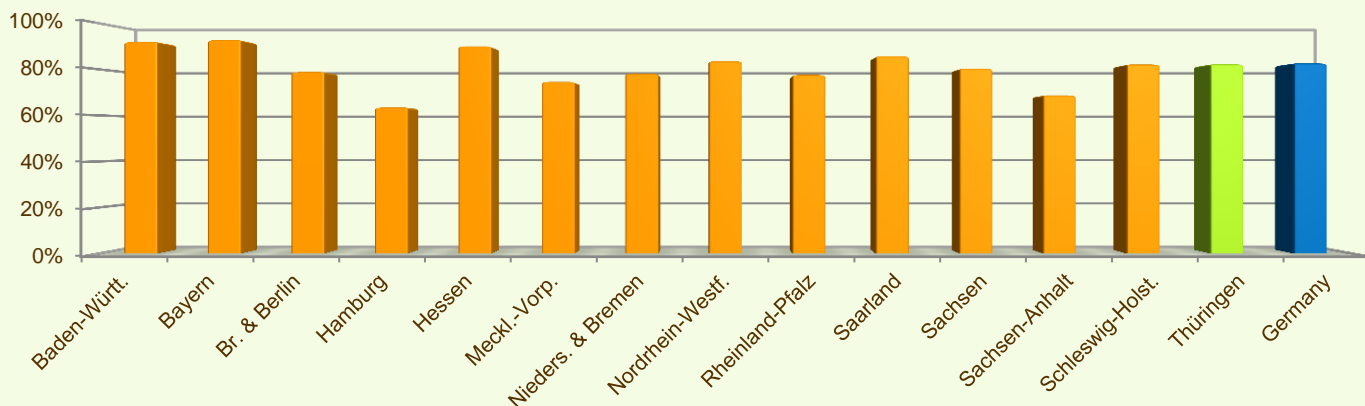
**Figure 9: Axis 4 – Total public expenditure (2007-2013) against 2007-13 budgets, main measures**



## Summary

- ✓ Within seven years of implementation, the Thüringen RDP has utilised around 83% (see figure 10) of the total public expenditure planned for the current Programming Period (including post Health Check and the European Economic Recovery Package modifications).
- ✓ Agri-environment payments (M214) is the measure with the highest allocated budget in the Thüringen RDP. Up to 2013, it has utilised nearly 84% of its available budget and represents 32% of the total public expenditure of the programme.
- ✓ Payments to farmers in areas with handicaps, other than mountain areas (M212) has the second largest budget in the Thüringen RDP and the utilised expenditure is 98% of its allocated funds. M212 represents 17% of the total public expenditure of the programme.
- ✓ The third largest measure budget is for Modernisation of agricultural holdings (M121), which has used 74% of its programmed total public expenditure and represents 12% of the total public expenditure of the programme.

**Figure 10: Progress of total public expenditure up to 2013 (at regional and national level)**



*Source of the data: 1) Programmed expenditures 2007-2013: RDP budget allocation following Health Check revision (December 2013); 2) Expenditures 2007-2013: DG AGRI 3) Output indicators data are available only at National level; therefore at regional level a comparison of financial implementation progress is provided between the regional RDPs.*

For further detailed information on financial / physical and output indicators data please refer to the dedicated ENRD website section on Monitoring Indicators.