

SACHSEN ANHALT - GERMANY

Basic Information:

In total the Sachsen-Anhalt Rural Development Programme (RDP) has budgeted for 2007-2013 a total public expenditure of nearly €1.16 billion (European Agricultural Fund for Rural Development and Member State contribution). At the end of 2013, €799 million were spent out of the allocated budget (see figure 1).

Axis 1 – (Improving the competitiveness of the agricultural and forestry sector), has utilised 61% of its allocated budget.

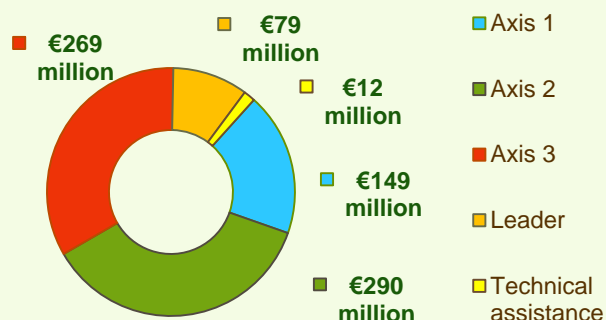
Axis 2 – (Improving the environment and the countryside), has utilised 79% of its programmed expenditure.

Axis 3 – (Improving the quality of life in rural areas), has utilised 65% of its budget.

Axis 4 – (Leader) has utilised 68% of its programmed expenditure.



Figure 1: Total Public Expenditure from 2007 to 2013 in Sachsen-Anhalt & expenditure per Axis



Axis 1 - Improving the competitiveness of the agricultural and forestry sector

Figure 2: Axis 1 - Total Public expenditure per measure in million EURO (2007-2013)

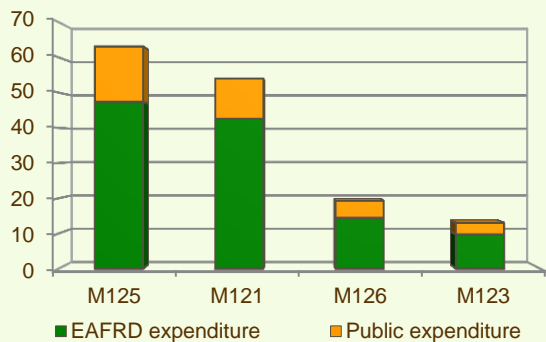
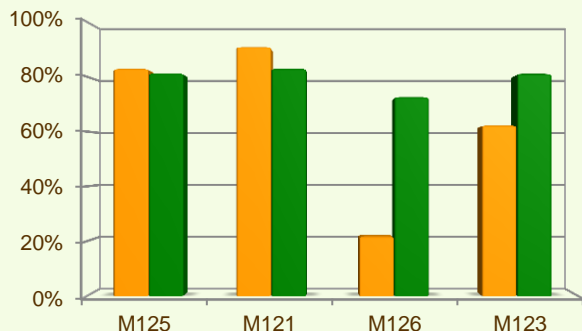


Figure 3: Axis 1 – Total public expenditure (2007-2013) against 2007-13 budgets, main measures



■ Total Public expenditure (%) against 2007-2013 budgets / Regional level
 ■ Total Public expenditure (%) against 2007-2013 budgets / National level

The sum of programmed total public expenditure to Axis 1 places an emphasis on Restoring agricultural production potential (M126) and Infrastructure related to the development and adaptation of agriculture (M125), allocating to these two measures 67% of the overall budgeted funds for Axis 1.

Analysis of the expenditure rates per measure up to 2013 shows that:

- ❖ The measures with highest utilisation rates are:
 - Modernisation of agricultural holdings (M121), 91%;
 - Infrastructure related to the development and adaptation of agriculture (M125), 83%.
- ❖ Adding value to agricultural and forestry products (M123) has spent 62% of its budget.
- ❖ Restoring agricultural production potential (M126) has used 22% of its planned allocation.
- ❖ Up to the end of 2013 minimal expenditure has been utilised for Use of advisory services (M114).

Figure 3 indicates the progress of the total public expenditure of the most important measures of Axis 1 against the 2007-2013 budgets, in comparison to the National level.

SACHSEN ANHALT - GERMANY

Axis 2 - Improving the environment and the countryside

The sum of programmed total public expenditure on Axis 2 focuses on Agri-environment payments (M214). The measure represents the majority of the Axis 2 utilised expenditure (see figure 4) and has been allocated nearly 25% of the total public budget programmed in the Sachsen-Anhalt RDP for 2007-2013.

- ❖ Non-productive investments – forestry (M227) and First afforestation of agricultural land (M221) have used all of their planned expenditure.
- ❖ First afforestation of non-agricultural land (M223) and Payments to farmers in areas with handicaps, other than mountain areas (M212) have spent nearly 99% of their budget.
- ❖ Agri-environment payments (M214) has utilised 76% of its programmed expenditure.
- ❖ The Natura 2000 payments and payments linked to Directive 2000/60/EC (M213) have used 73% of its budget.

Figure 5 provides an indication of the progress of the total public expenditure of the most important measures of Axis 2 against the 2007-2013 budgets, in comparison to the National level.

Figure 4: Axis 2 - Total Public expenditure per measure in million EURO (2007-2013)

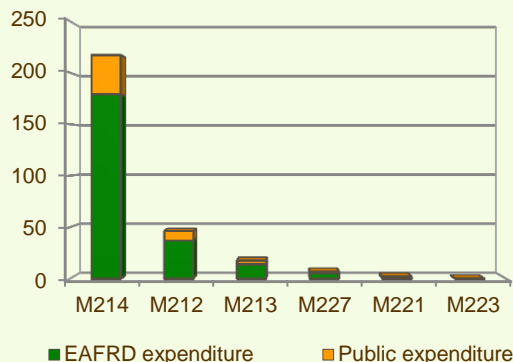
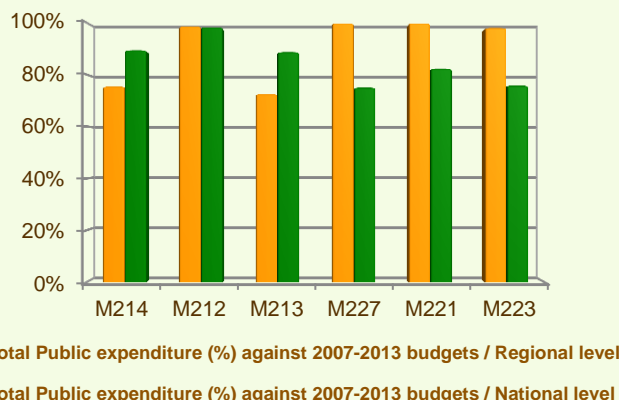
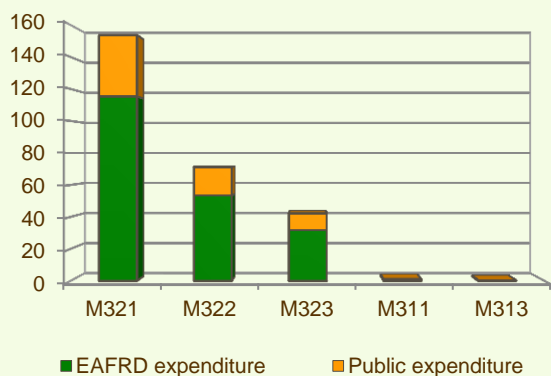


Figure 5: Axis 2 – Total public expenditure (2007-2013) against 2007-13 budgets, main measures



Axis 3 - Quality of life in rural areas and diversification of the rural economy

Figure 6: Axis 3 - Total Public expenditure per measure in million EURO (2007-2013)



The sum of programmed total public expenditure on Axis 3 of the Sachsen-Anhalt RDP focuses on Basic services for the economy and rural population (M321), which represents 58% of the Axis budget.

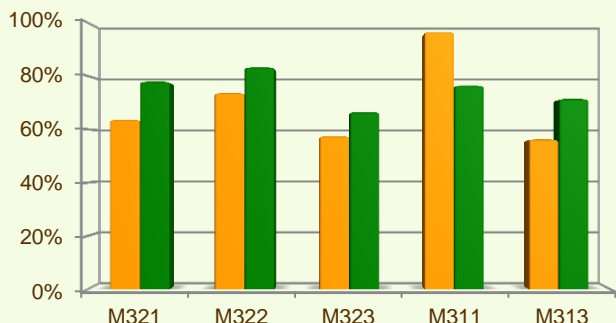
When comparing the expenditure rates per measure up to 2013 it is observed that:

- ❖ Diversification into non-agricultural activities (M311) has used nearly 97% of its budget.
- ❖ Village renewal and development (M322) has utilised 74% of its planned expenditure.
- ❖ Basic services for the economy and rural population (M321) has spent 64% of its budget.

SACHSEN ANHALT - GERMANY

Axis 3 - Quality of life in rural areas and diversification of the rural economy

Figure 7: Axis 3 – Total public expenditure (2007-2013) against 2007-13 budgets, main measures



■ Total Public expenditure (%) against 2007-2013 budgets / Regional level

■ Total Public expenditure (%) against 2007-2013 budgets / National level

- ❖ Conservation and upgrading of the rural heritage (M323) has realised almost 58% of its planned allocation.
- ❖ Encouragement of tourism activities (M313) has spent 56% of its programmed budget.

Figure 7 provides an indication of the progress of the total public expenditure of the most important measures of Axis 3 against the 2007-2013 budgets, in comparison to the National level.

Axis 4 - Leader

The Leader Axis in the Sachsen-Anhalt RDP has allocated budget of approximately €116 million, out of which nearly €79 million has been spent by 2013. The largest allocation of funds is on the Quality of life and diversification measures (M413).

When comparing expenditure per measure up to 2013 it is observed that M413 had the largest utilised public expenditure (see figure 8), having used 71% of its allocated funds. It is also observed that:

- ❖ Two measures have utilised between 64% and 66% of their programmed expenditure:
 - Running the LAG, skills acquisition, animation (M431), 64%;
 - Implementing cooperation projects (M421), 66%.
- ❖ Competitiveness (M411) has utilised almost 52% of its planned expenditure.

Figure 9 provides an indication of the progress of the total public expenditure of the most important measures of Axis 4 against the 2007-2013 budgets, in comparison to the National level.

Figure 8: Axis 4 - Total Public expenditure per measure in million EURO (2007-2013)

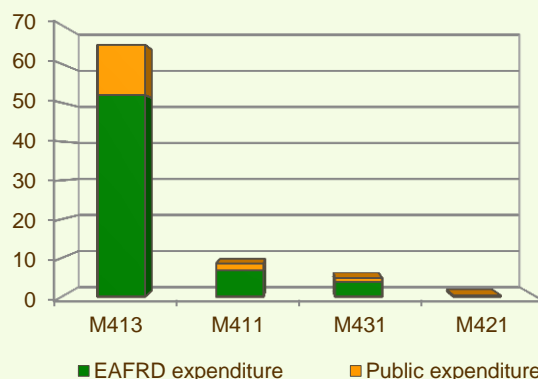
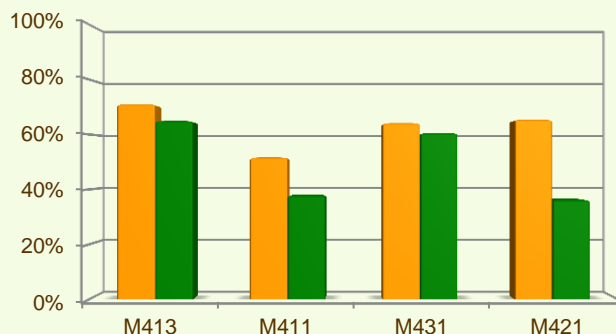


Figure 9: Axis 4 – Total public expenditure (2007-2013) against 2007-13 budgets, main measures



■ Total Public expenditure (%) against 2007-2013 budgets / Regional level

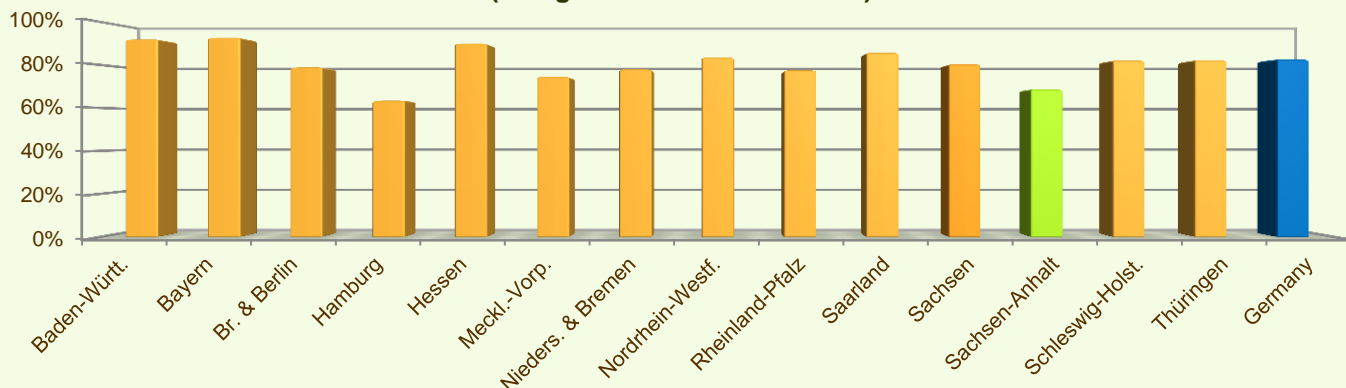
■ Total Public expenditure (%) against 2007-2013 budgets / National level

SACHSEN ANHALT - GERMANY

Summary

- ✓ Within seven years of implementation, the Sachsen-Anhalt RDP has utilised 69% (see figure 10) of the total public expenditure planned for the current Programming Period (including post Health Check and the European Economic Recovery Package modifications).
- ✓ Agri-environment payments (M214) is the measure with the highest allocated budget in the Sachsen-Anhalt RDP. Up to 2013, it has utilised 76% of its available budget and represents 27% of the total public expenditure of the programme.
- ✓ Basic services for the economy and rural population (M321) has the second largest budget in the Sachsen-Anhalt RDP and it utilised 64% of its allocated funds. M321 represents 19% of the total public expenditure of the programme.
- ✓ The third largest measure budget is for Village renewal and development (M322), which has used almost 74% of its programmed total public expenditure and represents 9% of the total public expenditure of the programme.

Figure 10: Progress of total public expenditure up to 2013 (at regional and national level)



Source of the data:

- 1) Programmed expenditures 2007-2013: RDP budget allocation following Health Check revision (December 2013)
- 2) Expenditures 2007-2013: DG AGRI
- 3) Output indicators data are available only at National level; therefore at regional level a comparison of financial implementation progress is provided between the regional RDPs.

For further detailed information on financial / physical and output indicators data please refer to the dedicated ENRD website section on Monitoring Indicators.



<http://enrd.ec.europa.eu>