

# NORDRHEIN WESTFALEN - GERMANY

## Basic Information:

In total the Nordrhein-Westfalen Rural Development Programme (RDP) has budgeted for 2007-2013 a total public expenditure of €883 million (European Agricultural Fund for Rural Development and Member State contribution). At the end of 2013, €740 million were spent out of the allocated budget (see figure 1).

**Axis 1** – (Improving the competitiveness of the agricultural and forestry sector), has utilised 83% of its allocated budget.

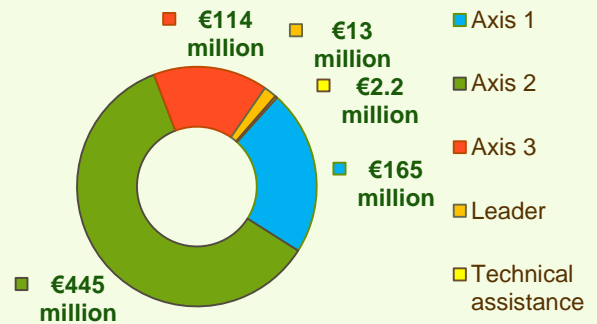
**Axis 2** – (Improving the environment and the countryside), has utilised nearly 88% of its programmed expenditure.

**Axis 3** – (Improving the quality of life in rural areas), has utilised 81% of its budget.

**Axis 4** – (Leader) has utilised 41% of its programmed expenditure.

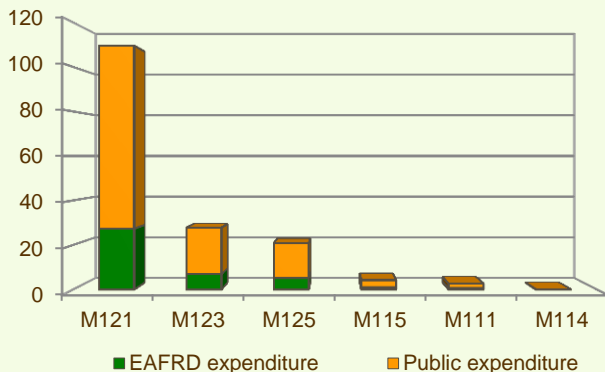


**Figure 1: Total Public Expenditure from 2007 to 2013 in Nordrhein-Westfalen & expenditure per Axis**

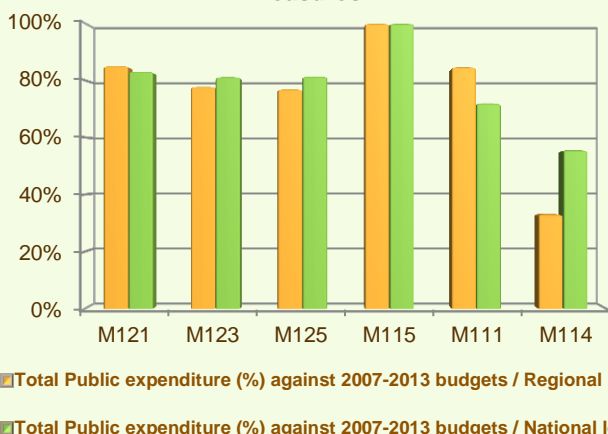


## Axis 1 - Improving the competitiveness of the agricultural and forestry sector

**Figure 2: Axis 1 - Total Public expenditure per measure in million EURO (2007-2013)**



**Figure 3: Axis 1 – Total public expenditure (2007-2013) against 2007-13 budgets, main measures**



The sum of programmed total public expenditure on Axis 1 places an emphasis on the Modernisation of agricultural holdings (Measure 121), allocating to this measure nearly 65% of the overall budgeted funds for Axis 1. Analysis of the expenditure rates per measure up to 2013 shows that:

- ❖ Setting up of management, relief and advisory services (M115) has used all of its budget.
- ❖ Modernisation of agricultural holdings (M121) and Vocational training and information actions (M111) have utilised 85% of their allocated expenditure.
- ❖ Infrastructure related to the development and adaptation of agriculture (M125) and Adding value to agricultural and forestry products (M123) have utilised around 77% of their planned budgets.
- ❖ Use of advisory services (M114) has spent 33% of its planned allocation.
- ❖ No expenditure has been utilised up to 2013 for Cooperation for development of new products, etc. (M124).

Figure 3 indicates the progress of the total public expenditure of the most important measures of Axis 1 against the 2007-2013 budgets, in comparison to the National level.

# NORDRHEIN WESTFALEN - GERMANY

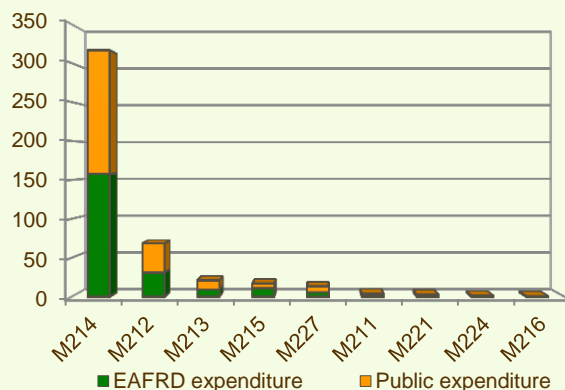
## Axis 2 - Improving the environment and the countryside

The sum of total public expenditure on Axis 2 focuses on Agri-environment payments (M214). The measure represents the majority of the Axis 2 utilised expenditure (see figure 4) and has been allocated more than 41% of the total public budget programmed in the Nordrhein-Westfalen RDP for 2007-2013.

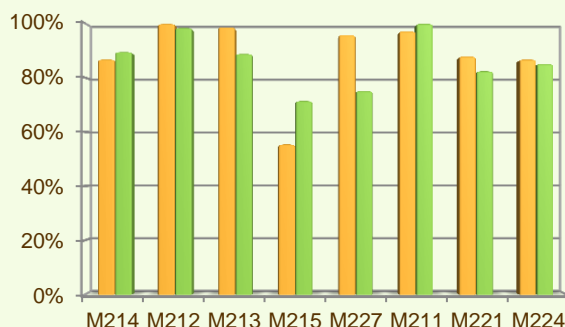
- ❖ Payments to farmers in other areas with handicaps, other than mountain areas (M212) have used all of its funds.
- ❖ 4 out of the 9 measures offered by the Axis, have utilised 96-99% of their allocated budgets:
  - Natura 2000 payments and payments linked to Directive 2000/60/EC (M213), 99%;
  - Natural handicap payments to farmers in mountain areas (M211), 97%;
  - Non-productive investments (M216 and M227), 96%.
- ❖ Agri-environment payments (M214), Natura 2000 payments (M224) and First afforestation of agricultural land (M221) have spent 87-88% of their planned allocations.
- ❖ Animal welfare payments (M215) have used 56% of its allocated budgets.

Figure 5 provides an indication of the progress of the total public expenditure of the most important measures of Axis 2 against the 2007-2013 budgets, in comparison to the National level.

**Figure 4: Axis 2 - Total Public expenditure per measure in million EURO (2007-2013)**



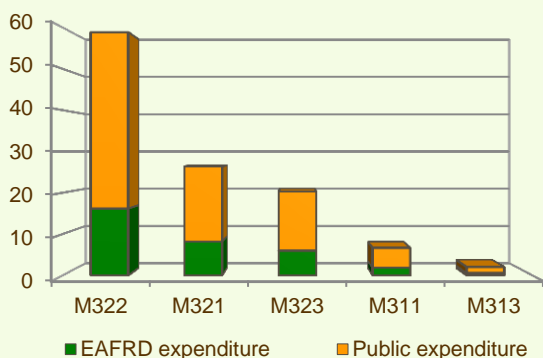
**Figure 5: Axis 2 – Total public expenditure (2007-2013) against 2007-13 budgets, main measures**



■ Total Public expenditure (%) against 2007-2013 budgets / Regional level  
 ■ Total Public expenditure (%) against 2007-2013 budgets / National level

## Axis 3 - Quality of life in rural areas and diversification of the rural economy

**Figure 6: Axis 3 - Total Public expenditure per measure in million EURO (2007-2013)**



The sum of programmed total public expenditure on Axis 3 of the Nordrhein-Westfalen RDP focuses on Village renewal and development (M322), which represents 44% of the Axis budget.

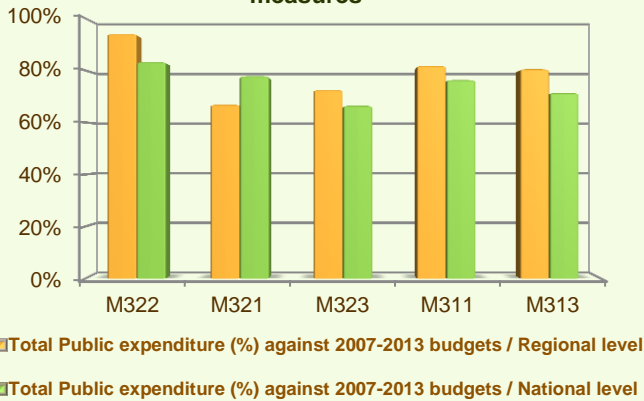
When comparing the expenditure rates per measure up to 2013 it is observed that:

- ❖ Village renewal and development (M322) has utilised 94% of its allocated funds.
- ❖ Diversification into non-agricultural activities (M311) and Encouragement of tourism activities (M313) have used around 81% of their programmed expenditure.

# NORDRHEIN WESTFALEN - GERMANY

## Axis 3 - Quality of life in rural areas and diversification of the rural economy

**Figure 7: Axis 3 – Total public expenditure (2007-2013) against 2007-13 budgets, main measures**



❖ Two measures have spent 67-73% of their programmed budgets:

- Basic services for the economy and rural population (M321), 67%;
- Conservation and upgrading of the rural heritage (M323), 73%;

Figure 7 provides an indication of the progress of the total public expenditure of the most important measures of Axis 3 against the 2007-2013 budgets, in comparison to the National level.

## Axis 4 - Leader

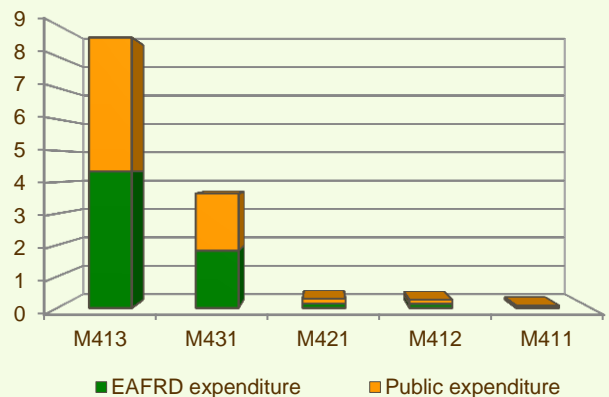
The Leader Axis in the Nordrhein-Westfalen RDP has allocated budget of approximately €31 million out of which €12.9 million has been spent by 2013. The largest allocation of funds is on Quality of life/diversification measure (M413).

When comparing expenditure per measure up to 2013 (figure 8) it is observed:

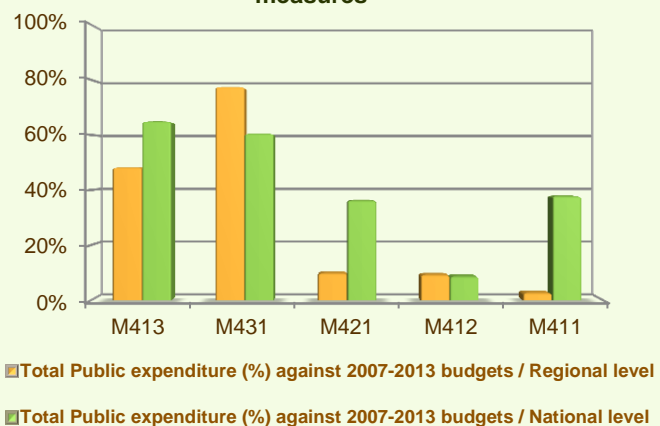
- ❖ Running the LAG, skills acquisition, animation (M431) has utilised around 78% of its programmed expenditure.
- ❖ Quality of life/diversification (M413), in absolute terms, has the largest utilised total public expenditure, and has spent around 48% of its allocated funds.
- ❖ Implementing cooperation projects (M421) and Environment/land management (M412) have spent respectively 10% and 9% of their allocated budgets.
- ❖ Up to the end of 2013 minimal expenditure has been utilised For Competitiveness (M411).

Figure 9 provides an indication of the progress of the total public expenditure of the most important measures of Axis 4 against the 2007-2013 budgets, in comparison to the National level.

**Figure 8: Axis 4 - Total Public expenditure per measure in million EURO (2007-2013)**



**Figure 9: Axis 4 – Total public expenditure (2007-2013) against 2007-13 budgets, main measures**

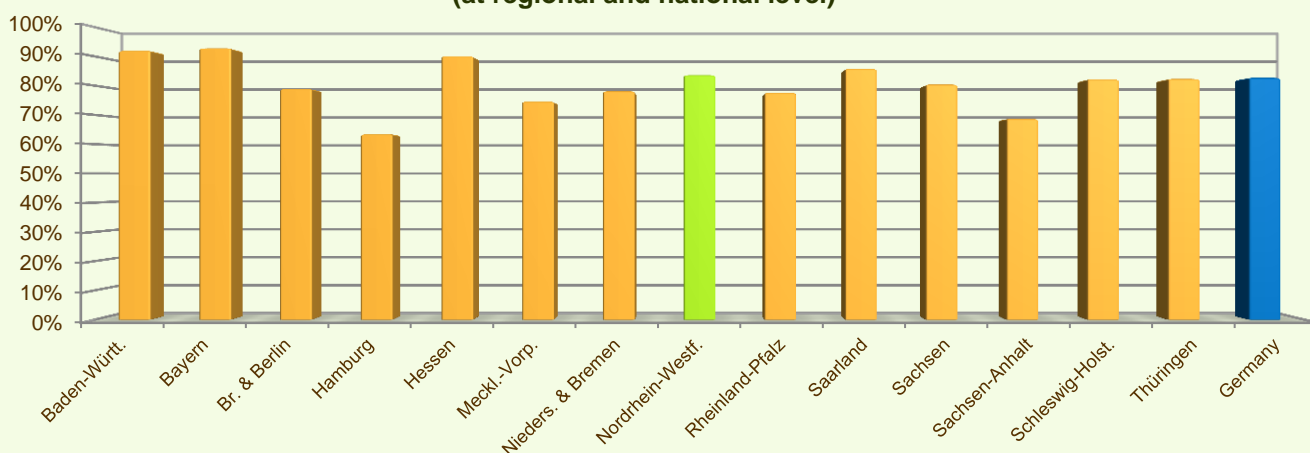


# NORDRHEIN WESTFALEN - GERMANY

## Summary

- ✓ Within seven years of implementation, the Nordrhein-Westfalen RDP has utilised 84% (see figure 10) of the total public expenditure planned for the current Programming Period (including post Health Check and the European Economic Recovery Package modifications).
- ✓ Agri-environment payments (M214) is the measure with the highest allocated budget in the Nordrhein-Westfalen RDP. Up to 2013, it has utilised 87% of its available budget and represents 43% of the total public expenditure of the programme.
- ✓ Modernisation of agricultural holdings (M121) has the second largest budget in the Nordrhein-Westfalen RDP and the utilised expenditure is 85% of its allocated funds. M121 represents 15% of the total public expenditure of the programme.
- ✓ The third largest measure budget is for Payments to farmers in areas with handicaps, other than mountain areas (M212), which has used all of its programmed total public expenditure and represents 9% of the total public expenditure of the programme.

**Figure 10: Progress of total public expenditure up to 2013 (at regional and national level)**



Source of the data:

1) Programmed expenditures 2007-2013: RDP budget allocation following Health Check revision (December 2013)

2) Expenditures 2007-2013: DG AGRI

3) Output indicators data are available only at National level; therefore at regional level a comparison of financial implementation progress is provided between the regional RDPs.

For further detailed information on financial / physical and output indicators data please refer to the dedicated ENRD website section on Monitoring Indicators.



<http://enrd.ec.europa.eu>