

BELGIUM - WALLONIA



Basic Information:

The Wallonian Rural Development Programme (RDP) has budgeted for 2007-2013 a total public expenditure of €610 million (European Agricultural Fund for Rural Development and Member State contribution). At the end of 2013, €480 million were spent out of the allocated budget (see Figure 1).

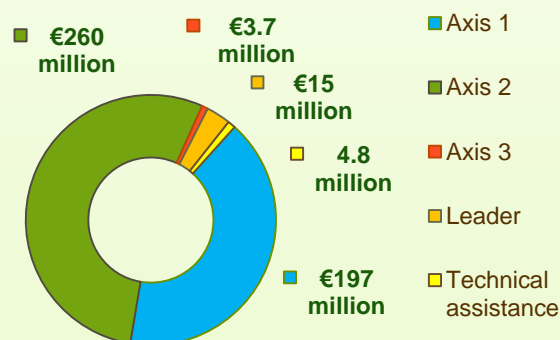
Axis 1 (Improving the competitiveness of the agricultural and forestry sector) has utilised 87% of its allocated budget.

Axis 2 (Improving the environment and the countryside) has utilised nearly 82% of its programmed expenditure.

Axis 3 (Improving the quality of life in rural areas) has utilised almost 11% of its budget.

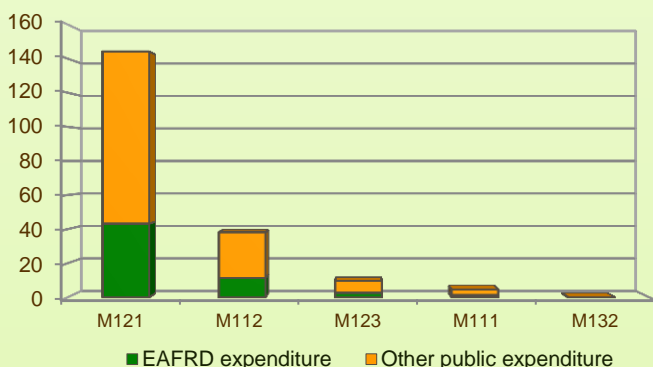
Axis 4 (Leader) has utilised approximately 67% of its programmed expenditure.

Figure 1: Total public expenditure per axis in Wallonia (2007-2013)



Axis 1 - Improving the competitiveness of the agricultural and forestry sector

Figure 2: Axis 1 total public expenditure per measure in million EURO (2007-2013)



Axis 1, places an emphasis on Modernisation of agricultural holdings (Measure 121) and Setting up of young farmers (Measure 112), allocating to these two measures 85% of the overall budgeted funds for Axis 1.

Analysis of the expenditure rates per measure up to 2013 shows that:

- ❖ Modernisation of agricultural holdings (M121) has utilised 96% of its allocated budget.
- ❖ The Setting up of young farmers measure (M112) has utilised almost 90% of its programmed expenditure.
- ❖ Vocational training and information actions (M111) has spent 87% of its planned allocation.
- ❖ Adding value to agricultural and forestry products (M123) has used 36% of its funds.
- ❖ Participation of farmers in food quality schemes (M132) has utilised 9% of its budget.

Figure 3: Axis 1 total public expenditure (2007-2013) against 2007-2013 budgets, main measures

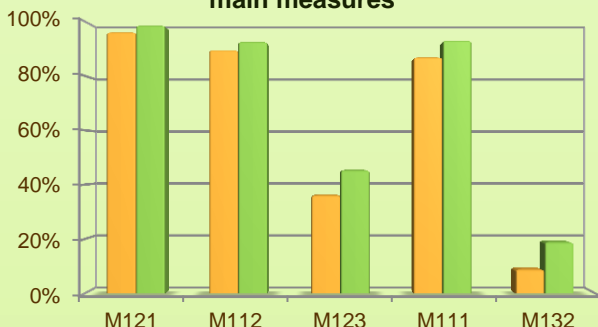


Figure 3 provides an indication of the progress of the total public expenditure of the most important measures of Axis 1 against the 2007-2013 budgets, in comparison to the National level.

■ Total public expenditure (%) against 2007-2013 budgets / Regional level

■ Total public expenditure (%) against 2007-2013 budgets / National level

BELGIUM - WALLONIA

Axis 2 - Improving the environment and the countryside

Axis 2 focuses on Agri-environment payments (M214). This measure represents in absolute terms the largest total public expenditure within the Axis up to 2013 (see Figure 4) and has been allocated nearly 40% of the total public budget programmed in the Wallonia RDP for 2007-2013.

- ❖ Payments to farmers in areas with handicaps, other than mountain areas (M212) has spent 85% of its programmed budget.
- ❖ Agri-environment payments (M214) has utilised nearly 84% of its programmed expenditure.
- ❖ Natura 2000 payments and payments linked to Directive 2000/60/EC (M213) and Natura 2000 payments (M224) have used respectively 68% and 56% of their planned allocations.
- ❖ Up to the end of 2013, no expenditure has been recorded for measure Non-productive investments – agriculture (M216).

Figure 5 provides an indication of the progress of the total public expenditure of the most important measures of Axis 2 against the 2007-2013 budgets, in comparison to the National level.

Figure 4: Axis 2 total public expenditure per measure in million EURO (2007-2013)

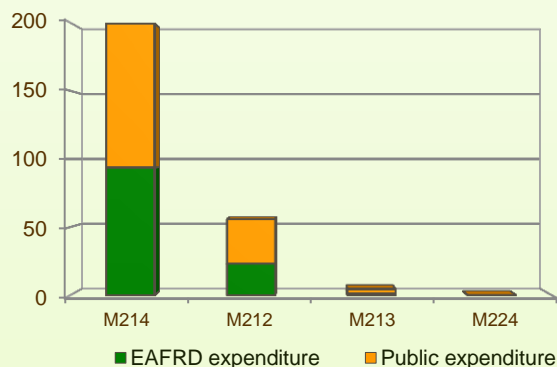
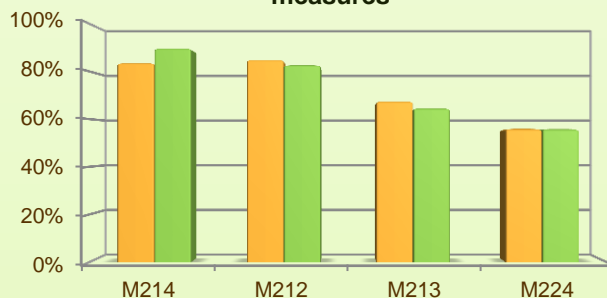


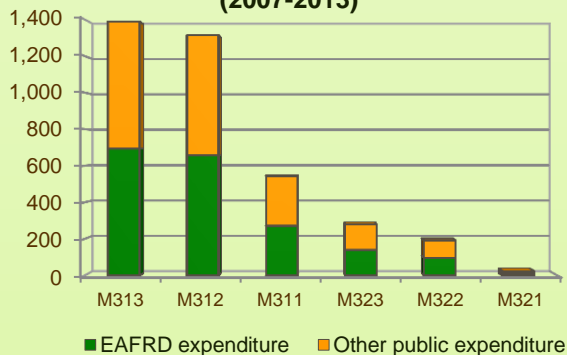
Figure 5: Axis 2 total public expenditure (2007-2013) against 2007-2013 budgets, main measures



■ Total public expenditure (%) against 2007-2013 budgets / Regional level
■ Total public expenditure (%) against 2007-2013 budgets / National level

Axis 3 - Quality of life in rural areas and diversification of the rural economy

Figure 6: Axis 3 total public expenditure per measure in thousand EURO (2007-2013)



Axis 3 of the Wallonia RDP focuses on Support for business creation and development (M312), which represents 32% of the Axis programmed budget and in absolute terms it is the second-largest total public expenditure within the Axis up to 2013 (see Figure 6).

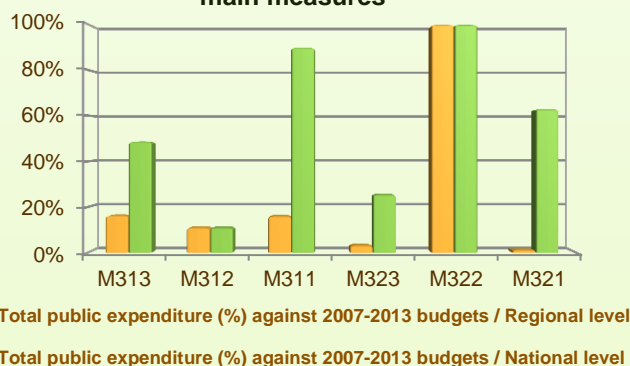
When comparing the expenditure rates per measure up to 2013 it is observed that:

- ❖ Village renewal and development (M322) has utilised 100% of its budget.
- ❖ Two measures have utilised 16% of their programmed budgets:
 - Diversification into non-agricultural activities (M311).
 - Encouragement of tourism activities (M313).
- ❖ Support for business creation and development (M312) has spent 11% of its budget.

BELGIUM - WALLONIA

Axis 3 - Quality of life in rural areas and diversification of the rural economy

Figure 7: Axis 3 total public expenditure (2007-2013) against 2007-2013 budgets, main measures



- Finally, up to the end of 2013, minimal or no expenditure has been recorded for Conservation and upgrading of the rural heritage (M323), Basic services for the economy and rural population (M321) and Training and information (M331).

Figure 7 provides an indication of the progress of the total public expenditure of the most important measures of Axis 3 against the 2007-2013 budgets, in comparison to the National level.

Axis 4 - Leader

The Leader Axis in the Wallonia RDP has allocated budget of nearly €23 million, out of which around €15 million have been spent by 2013. Within the Axis, emphasis has been given to the Quality of life/diversification measure (M413) which has the largest share of allocated funds.

When comparing utilised expenditure per measure up to 2013 it is observed that:

- Quality of life/diversification measure (M413) had in absolute terms the largest total public expenditure within the Axis (Figure 8), having spent nearly 64% of its budget.
- Environment/land management (M412) has used 92% of its planned expenditure.
- Running the LAG, skills acquisition, animation (M431) has used 86% of its planned allocation.
- Implementing cooperation projects measure (M421) has used 38% of its budget.
- Finally, Competitiveness (M411) has utilised nearly 28% of its planned allocation.

Figure 9 provides an indication of the progress of the total public expenditure of the most important measures of Axis 4 against the 2007-2013 budgets, in comparison to the National level.

Figure 8: Axis 4 total public expenditure per measure in million EURO (2007-2013)

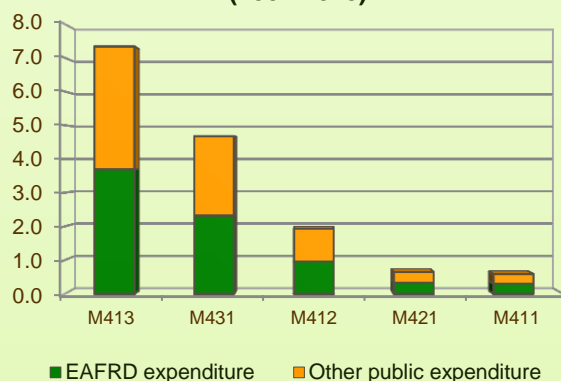
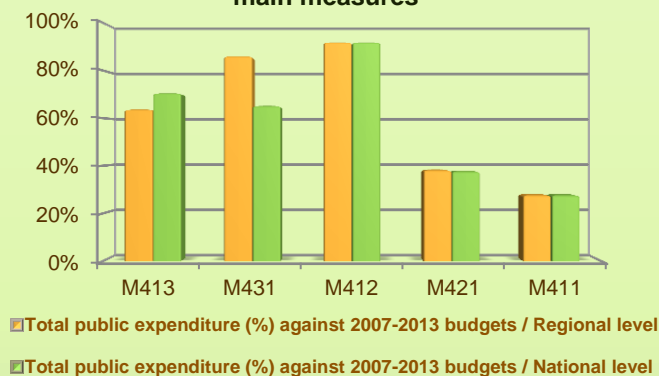


Figure 9: Axis 4 total public expenditure (2007-2013) against 2007-2013 budgets, main measures



BELGIUM - WALLONIA

Measure 412 project example: Building Community Partnerships to Protect Local Landscapes & Biodiversity / Belgium, Wallonia

Natural landscapes, biodiversity and diversity of farming in Wallonia have become tourist attractions for fishing, hiking, cycling and other countryside leisure activities. Preserving and restoring natural habitats, local river banks overrun by invasive weeds or eroded by years of cattle grazing was important for local rural development stakeholders.

The project using LEADER funds helped creation of a pro-active alliance of local authorities, non-government organisations and farmers to ensure the sustainable management and maintenance of river banks and watercourses. The collaboration between the various actors has proved efficient and effective: 3000 m. of fences installed and 850 m. of banks reforested, 283 km. of banks freed from invasive species. That ensured an increased awareness on environmental sustainability amongst all stakeholders.

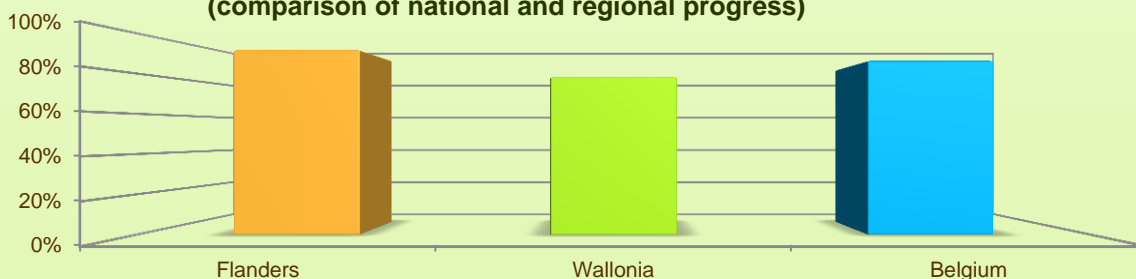
The total cost of the project was €213,500, out of which €96,075 was EAFRD contribution.

Link: http://enrd.ec.europa.eu/policy-in-action/rdp_view/en/view_projects_en.cfm?action=detail&backfuse=jsview&postcard_id=142

Summary

- ✓ Within seven years of implementation, the Wallonia RDP has utilised nearly 79% (see Figure 10) of the total public expenditure planned for the current Programming Period (including post Health Check and the European Economic Recovery Package modifications).
- ✓ Agri-environment payments (M214) is the measure with the highest allocated budget in the Wallonia RDP. Up to 2013, it has utilised almost 84% of its available budget and represents 41% of the total public expenditure of the programme.
- ✓ Modernisation of agricultural holdings (M121) has the second largest budget in the Wallonia RDP and used up to 96% of the allocated funds. M121 represents 30% of the total public expenditure of the programme.
- ✓ The third largest measure budget is for Setting up of young farmers (M112), which has used almost 90% of its programmed total public expenditure and represents 8% of the total public expenditure of the programme.

Figure 10: Progress of total public expenditure up to 2013 (comparison of national and regional progress)



Source of the data:

1) *Programmed expenditures 2007-2013: RDP budget allocation following Health Check revision (December 2013); 2) Expenditures 2007-2013: DG AGRI; 3) Output indicators data are available only at National level; therefore at regional level a comparison of financial implementation progress is provided between the regional RDPs.*

For further detailed information on financial / physical and output indicators data please refer to the dedicated ENRD website section on Monitoring Indicators.